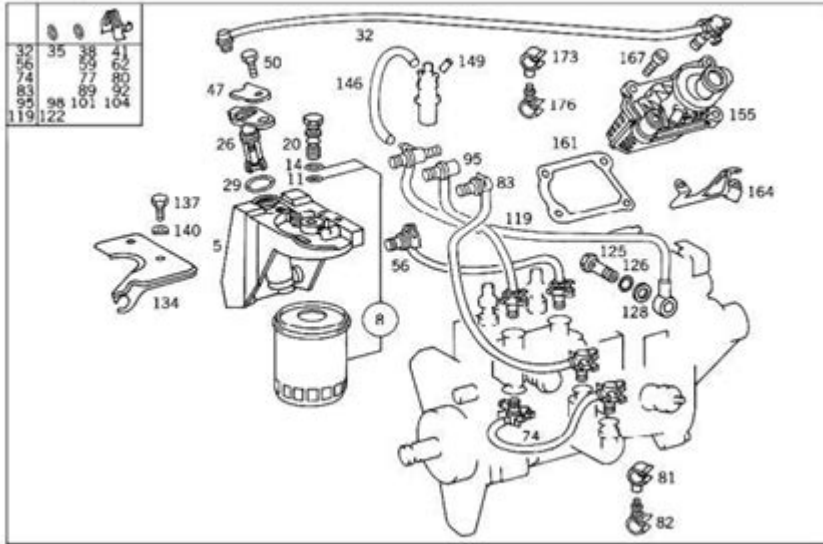


Mercedes C250 Engine Diagram



Mercedes C250 engine diagram is an essential reference for understanding the complex workings of this luxury vehicle's powertrain. The Mercedes-Benz C-Class has long been renowned for its performance, comfort, and engineering excellence. Among its various models, the C250 stands out due to its balance of power and efficiency. This article provides an in-depth look at the engine diagram of the Mercedes C250, helping enthusiasts and technicians alike understand the layout and function of its components.

Overview of the Mercedes C250 Engine

The Mercedes C250 is typically equipped with a 1.8-liter inline-four turbocharged engine. This engine is designed to deliver a remarkable blend of power and fuel efficiency, making it a popular choice among drivers. The C250's engine is part of the M271 family, which is known for its robust performance and reliability.

Key Specifications

Before diving into the engine diagram, it's crucial to understand some key specifications:

- Engine Type: Inline-4, Turbocharged
- Displacement: 1.8 liters
- Power Output: Approximately 201 horsepower
- Torque: Around 229 lb-ft
- Transmission: 7-speed automatic (7G-Tronic)

- Fuel Economy: Approximately 21 mpg city / 31 mpg highway

This engine provides a smooth driving experience while still offering enough power for spirited driving.

Components of the Mercedes C250 Engine

The engine diagram of the Mercedes C250 illustrates various components that work together to ensure optimal performance. Understanding these components will provide insight into how the engine operates and how to troubleshoot issues.

Main Components

Here are the main components you will find in the Mercedes C250 engine:

1. Engine Block: The core structure of the engine where cylinders are housed.
2. Cylinder Head: Sits atop the engine block and contains the intake and exhaust valves along with the camshaft.
3. Pistons: Move up and down within the cylinders, compressing the air-fuel mixture for combustion.
4. Connecting Rods: Connect the pistons to the crankshaft.
5. Crankshaft: Converts the linear motion of the pistons into rotational motion to drive the vehicle's wheels.
6. Timing Chain/Belt: Ensures that the camshaft and crankshaft operate in sync.
7. Intake Manifold: Delivers air to the cylinders.
8. Exhaust Manifold: Collects exhaust gases from the cylinders and directs them to the exhaust system.
9. Turbocharger: Compresses incoming air to enhance engine power and efficiency.

Visualizing the Engine Layout

To better understand the Mercedes C250 engine, let's break down the engine diagram into sections. While we cannot provide visual imagery here, a typical engine diagram would feature the following layout:

- The engine block at the center, with cylinders clearly marked.
- The cylinder head positioned above the engine block, showcasing the valves and camshaft.
- Pistons depicted within the cylinders, connected to the connecting rods leading down to the crankshaft.
- The timing chain wrapped around the crankshaft and camshaft, ensuring synchronized operation.
- The intake and exhaust manifolds located on either side of the engine block.
- The turbocharger situated near the intake manifold, indicative of its function in boosting performance.

Understanding the Functionality

Each component of the Mercedes C250 engine plays a significant role in its overall functionality. Here's how these parts interact during the engine's operation:

Combustion Cycle

The combustion cycle is a critical process that transforms fuel into energy. For the Mercedes C250, the four-stroke cycle consists of:

1. Intake Stroke: The intake valve opens, and the piston moves down, drawing in an air-fuel mixture.
2. Compression Stroke: The piston moves back up, compressing the mixture. The turbocharger increases the air density, enhancing combustion efficiency.
3. Power Stroke: The spark plug ignites the compressed air-fuel mixture, forcing the piston down and generating power.
4. Exhaust Stroke: The exhaust valve opens, and the piston moves back up, pushing out the combustion gases.

Turbocharging System

The turbocharger is a defining feature of the Mercedes C250 engine. It utilizes exhaust gases to spin a turbine, drawing in more air for combustion. This process leads to:

- Increased power output without a significant increase in engine size.
- Improved fuel efficiency, as the engine can extract more energy from the same amount of fuel.
- Lower emissions due to more complete combustion of the air-fuel mixture.

Common Issues and Maintenance

Understanding the engine diagram can also help in diagnosing common issues associated with the Mercedes C250 engine. Here are some frequently encountered problems:

Common Problems

- Oil Leaks: Often occur at the valve cover gasket or oil pan.
- Turbocharger Failure: Can lead to decreased power and fuel efficiency.
- Timing Chain Issues: A stretched or worn timing chain can cause engine misfires.
- Fuel Injector Problems: Clogged or malfunctioning fuel injectors can affect engine performance.

Maintenance Tips

To ensure the longevity and reliability of the Mercedes C250 engine, consider the following maintenance tips:

- Regular Oil Changes: Follow the manufacturer's recommendations for oil type and change intervals.
- Check and Replace Filters: This includes air filters, fuel filters, and oil filters.
- Monitor Coolant Levels: Keep an eye on coolant levels to prevent overheating.
- Inspect the Turbocharger: Regularly check for signs of wear or damage.
- Use Quality Fuel: Opt for high-grade fuel to ensure optimal engine performance.

Conclusion

The **Mercedes C250 engine diagram** is more than just a technical illustration; it is a roadmap to understanding the intricacies of one of the most efficient engines in its class. From the arrangement of the components to the function of the turbocharger, each element plays a vital role in delivering the performance, comfort, and reliability that Mercedes-Benz is known for. By familiarizing oneself with the engine diagram and associated components, owners and technicians can ensure their vehicles remain in excellent condition, maximizing both performance and longevity.

Frequently Asked Questions

What is the purpose of the engine diagram for a Mercedes C250?

The engine diagram for a Mercedes C250 serves as a visual representation of the engine's components and their arrangement, helping mechanics and enthusiasts understand the engine's layout and functionality.

Where can I find a detailed engine diagram for the Mercedes C250?

A detailed engine diagram for the Mercedes C250 can be found in the vehicle's service manual, online automotive forums, or on official Mercedes-Benz websites and parts catalogs.

What key components are typically shown in the Mercedes C250 engine diagram?

Key components shown in the Mercedes C250 engine diagram include the engine block, cylinder head, intake and exhaust manifolds, fuel injectors, spark plugs, and various sensors.

How can an engine diagram assist in troubleshooting issues with the Mercedes C250?

An engine diagram can assist in troubleshooting by providing a clear reference for locating components, understanding their functions, and identifying possible areas of failure or wear.

Are there differences in engine diagrams between the Mercedes C250 models from different years?

Yes, there can be differences in engine diagrams between Mercedes C250 models from different years due to design updates, engine specifications, and technology enhancements.

Can I use an engine diagram for a similar model in place of the Mercedes C250 diagram?

While some components may be similar, it's not advisable to use an engine diagram from a different model as it may lead to errors in repairs or maintenance due to differences in design and specifications.

What tools do I need to work with the Mercedes C250 engine diagram effectively?

To work with the Mercedes C250 engine diagram effectively, you may need basic hand tools, a torque wrench, diagnostic tools, and potentially a wiring diagram for electrical components.

How do I interpret the symbols used in the Mercedes C250 engine diagram?

Interpreting the symbols in the Mercedes C250 engine diagram requires familiarity with automotive schematics; typically, a legend or key is provided in the manual to explain each symbol.

Is there a digital version of the Mercedes C250 engine diagram available?

Yes, many online resources, including official manufacturer websites and automotive repair databases, offer digital versions of the Mercedes C250 engine diagram that can be accessed and printed.

Find other PDF article:

<https://soc.up.edu.ph/44-slide/pdf?dataid=iYr65-8182&title=numerical-analysis-kincaid-solution-manual.pdf>

[Mercedes C250 Engine Diagram](#)

Luxury Cars - Sedans, SUVs, Coupes & Wagons | Mercedes-Benz ...

Discover luxury and performance from Mercedes-Benz Canada, with models including luxury sedans, SUVs, coupes, roadsters, convertibles, electric vehicles & more.

Build Your Own Car - Luxury Custom Cars - Mercedes-Benz

Build your own custom luxury car to fit your needs. Build and price a luxury sedan, SUV, convertible, & more with Mercedes-Benz car customizer.

All Vehicles | Mercedes-Benz Canada

View the entire line of Mercedes-Benz luxury sedans, coupes, SUVs, and sports cars organized by class and style. Discover our award-winning luxury vehicles.

Mercedes-Benz SUVs | Mercedes-Benz Canada

See the entire lineup of Mercedes-Benz SUVs. Explore specific classes and models, and compare features and pricing.

2026 Mercedes-AMG E 53 HYBRID Wagon | Future Vehicles

Discover the 2026 Mercedes-AMG E 53 HYBRID Wagon through its AMG performance, expanded versatility, and plug-in hybrid technology all wrapped in a luxury wagon.

Luxury Plug-In Hybrid Vehicles | Mercedes-Benz Canada

Explore the Mercedes-Benz Plug-In Hybrid range. Discover efficient, powerful, and eco-friendly vehicles. Learn more about our models, features, and benefits.

2026 Mercedes-Benz CLA Sedan | Future Vehicles | Mercedes ...

Innovation within and absolutely nothing without. The all-new 2026 Mercedes-Benz CLA Sedan introduces tech and drivetrain advancements making it the most intelligent and efficient vehicle ...

2026 Mercedes-Maybach SL 680 Monogram Series | Mercedes ...

Enjoy the air and ultimate comfort in the 2026 Mercedes-Maybach SL 680 Monogram Series, which features a bespoke Maybach pattern and a quiet, luxury interior.

Special Offers | Mercedes-Benz Canada

Explore the special offers on the current Mercedes-Benz line-up of luxury sedans, coupes, SUVs, wagons, convertibles, roadsters, hybrids and electric vehicles for sale.

2025 AMG CLE 53 4MATIC Cabriolet | Mercedes-Benz

Your Mercedes-Benz dealer helps keep your vehicle at its best, from maintenance to service to minor repairs of everyday wear. Factory-trained technicians use the most advanced diagnostic ...

Luxury Cars - Sedans, SUVs, Coupes & Wagons | Mercedes-Benz ...

Discover luxury and performance from Mercedes-Benz Canada, with models including luxury sedans, SUVs, coupes, roadsters, convertibles, electric vehicles & more.

Build Your Own Car - Luxury Custom Cars - Mercedes-Benz

Build your own custom luxury car to fit your needs. Build and price a luxury sedan, SUV, convertible, & more with Mercedes-Benz car customizer.

All Vehicles | Mercedes-Benz Canada

View the entire line of Mercedes-Benz luxury sedans, coupes, SUVs, and sports cars organized by class and style. Discover our award-winning luxury vehicles.

[Mercedes-Benz SUVs | Mercedes-Benz Canada](#)

See the entire lineup of Mercedes-Benz SUVs. Explore specific classes and models, and compare features and pricing.

[2026 Mercedes-AMG E 53 HYBRID Wagon | Future Vehicles](#)

Discover the 2026 Mercedes-AMG E 53 HYBRID Wagon through its AMG performance, expanded versatility, and plug-in hybrid technology all wrapped in a luxury wagon.

[Luxury Plug-In Hybrid Vehicles | Mercedes-Benz Canada](#)

Explore the Mercedes-Benz Plug-In Hybrid range. Discover efficient, powerful, and eco-friendly vehicles. Learn more about our models, features, and benefits.

2026 Mercedes-Benz CLA Sedan | Future Vehicles | Mercedes-Benz ...

Innovation within and absolutely nothing without. The all-new 2026 Mercedes-Benz CLA Sedan introduces tech and drivetrain advancements making it the most intelligent and efficient vehicle in the line-up.

[2026 Mercedes-Maybach SL 680 Monogram Series | Mercedes ...](#)

Enjoy the air and ultimate comfort in the 2026 Mercedes-Maybach SL 680 Monogram Series, which features a bespoke Maybach pattern and a quiet, luxury interior.

[Special Offers | Mercedes-Benz Canada](#)

Explore the special offers on the current Mercedes-Benz line-up of luxury sedans, coupes, SUVs, wagons, convertibles, roadsters, hybrids and electric vehicles for sale.

2025 AMG CLE 53 4MATIC Cabriolet | Mercedes-Benz

Your Mercedes-Benz dealer helps keep your vehicle at its best, from maintenance to service to minor repairs of everyday wear. Factory-trained technicians use the most advanced diagnostic ...

Explore our detailed Mercedes C250 engine diagram to understand its components and functions. Learn more about your vehicle's performance and maintenance today!

[Back to Home](#)