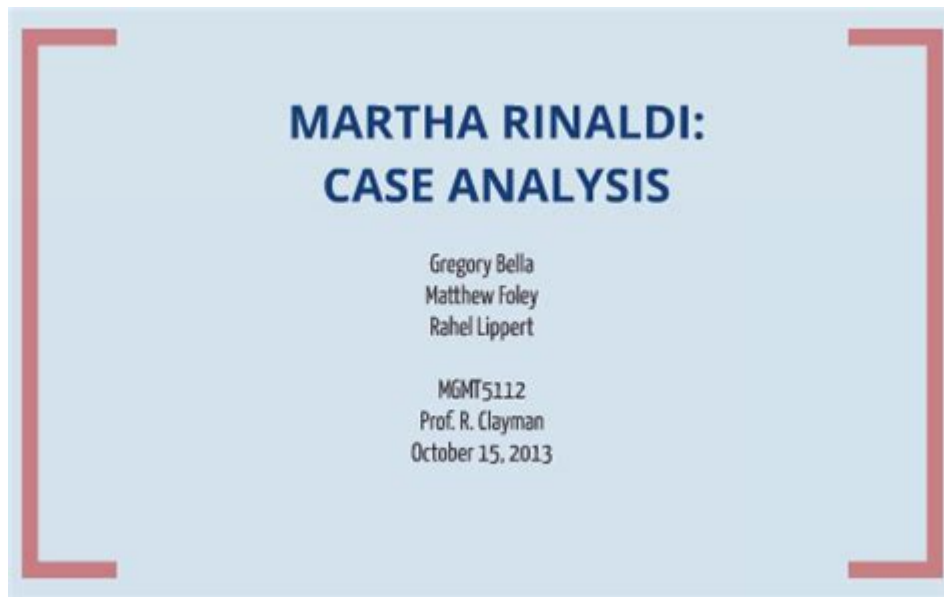


# Martha Rinaldi Case Analysis



## Martha Rinaldi Case Analysis

The Martha Rinaldi case has become a pivotal study in the realms of law, ethics, and corporate governance. It encapsulates a complex narrative that intertwines personal ambition, ethical dilemmas, and the repercussions of decisions made in the corporate world. This article delves into the multifaceted aspects of the case, analyzing the background, key events, legal implications, ethical challenges, and the lessons learned from this significant incident.

## Background of the Case

The Martha Rinaldi case centers around a high-profile corporate executive, Martha Rinaldi, who was the CEO of a mid-sized technology firm known for its innovative products and competitive market strategies. Under her leadership, the company experienced significant growth and profitability. However, the rapid expansion brought about various challenges that led to ethical and legal controversies.

## Corporate Environment

In the early 2010s, the technology sector was marked by fierce competition, rapid technological advancements, and an ever-increasing demand for innovative solutions. Companies were pressured to deliver results quickly, sometimes at the expense of ethical considerations. This environment set the stage for Rinaldi's subsequent decisions, which would ultimately lead to her downfall.

# Personal Ambition

Martha Rinaldi was known for her ambitious nature and relentless drive to succeed. Her leadership style was characterized by a focus on results, often prioritizing corporate success over ethical practices. This ambition, while initially a catalyst for the company's growth, soon began to blur the lines of ethical decision-making.

## Key Events Leading to the Case

Several key events culminated in the legal and ethical issues surrounding Martha Rinaldi. Understanding these events is crucial for grasping the complexities of the case.

### 1. Aggressive Business Strategies

Rinaldi implemented aggressive business strategies that prioritized market share over ethical practices. This included:

- Cutting corners in product development to speed up market entry.
- Overstating product capabilities in marketing materials to attract customers.
- Underreporting risks associated with new technologies to investors.

These strategies created immediate financial gains but also set the stage for future repercussions.

### 2. Whistleblower Allegations

In 2016, an employee within the company filed a whistleblower report alleging that Rinaldi had knowingly allowed the release of a product with significant flaws. The report claimed that Rinaldi was aware of the issues but chose to prioritize profits over consumer safety. This allegation triggered an internal investigation, which revealed a pattern of unethical practices.

### 3. Regulatory Scrutiny

Following the whistleblower allegations, regulatory bodies began to scrutinize the company's practices. This included:

- Investigations by the Securities and Exchange Commission (SEC) for potential securities fraud.
- Product recalls initiated due to safety concerns linked to the flawed technology.
- Increased media scrutiny, which painted Rinaldi and her leadership in a negative light.

The combination of these factors led to a loss of consumer trust and a decline in stock prices.

## **Legal Implications**

The legal ramifications of the Martha Rinaldi case were significant, affecting not only Rinaldi but the entire company. Several key legal issues arose:

### **1. Securities Fraud**

The SEC found that Rinaldi had misrepresented the company's financial health and product safety. This led to charges of securities fraud, which could result in severe penalties, including fines and imprisonment.

### **2. Consumer Protection Violations**

The release of a defective product raised questions about consumer safety and protection. This resulted in lawsuits from affected consumers seeking compensation for damages incurred due to the faulty product.

### **3. Corporate Governance Failures**

The case highlighted serious flaws in corporate governance within the company. The board of directors faced criticism for failing to supervise Rinaldi effectively, leading to calls for reforms in governance practices.

## **Ethical Challenges**

The Martha Rinaldi case serves as a critical example of the ethical challenges faced by corporate leaders. Several ethical dilemmas emerged throughout the case:

### **1. The Ethics of Leadership**

Rinaldi's leadership style raises questions about the responsibilities of corporate leaders. Ethical leadership involves:

- Transparency in decision-making.
- Accountability for actions taken.
- Prioritizing ethical considerations alongside financial performance.

Rinaldi's choices reflect a failure to adhere to these ethical principles.

## **2. The Role of Whistleblowers**

The case underscores the importance of whistleblowers in holding corporations accountable. While whistleblowers often face retaliation, their actions are crucial for uncovering unethical practices. Organizations must create environments where employees feel safe to report misconduct.

## **3. Corporate Culture**

The case illustrates how corporate culture can influence ethical behavior. A culture that prioritizes profit over ethics can lead to poor decision-making and reputational damage. Companies must foster a culture of integrity and ethical conduct to prevent similar situations.

# **Lessons Learned from the Martha Rinaldi Case**

The Martha Rinaldi case offers valuable lessons for corporate leaders, organizations, and regulators. Key takeaways include:

## **1. Importance of Ethical Decision-Making**

Leaders must prioritize ethical considerations in their decision-making processes. Short-term profits should not come at the expense of long-term sustainability and ethical integrity.

## **2. Strong Corporate Governance**

Effective corporate governance structures are essential for preventing misconduct. Boards should actively engage in oversight and ensure that ethical standards are upheld.

## **3. Support for Whistleblowers**

Organizations should implement policies that protect whistleblowers and encourage employees to report unethical behavior without fear of retaliation. This fosters a culture of accountability and transparency.

# Conclusion

The Martha Rinaldi case serves as a compelling reminder of the complexities and challenges inherent in corporate leadership. It highlights the need for ethical decision-making, strong corporate governance, and a supportive environment for whistleblowers. As organizations continue to navigate the fast-paced business landscape, the lessons learned from this case will be crucial in shaping future practices and ensuring that ethical considerations remain at the forefront of corporate strategy. The implications of Rinaldi's actions resonate beyond her company, serving as a cautionary tale for leaders in all sectors.

## Frequently Asked Questions

### **What is the Martha Rinaldi case about?**

The Martha Rinaldi case involves a legal dispute centered around issues of negligence and liability in a medical malpractice scenario, where the plaintiff claims that inadequate care led to significant harm.

### **What are the key legal principles involved in the Martha Rinaldi case?**

Key legal principles include duty of care, breach of that duty, causation, and damages. The case examines how these principles apply in the context of medical malpractice.

### **How has the Martha Rinaldi case impacted medical malpractice law?**

The case has highlighted the importance of establishing clear standards of care and the need for rigorous documentation in medical practices, potentially influencing future malpractice litigation.

### **What were the main arguments presented by the defense in the Martha Rinaldi case?**

The defense argued that the medical professionals acted within the standard of care and that any negative outcomes were due to pre-existing conditions rather than negligence.

### **What role did expert testimony play in the Martha Rinaldi case?**

Expert testimony was crucial in establishing what constitutes the standard of care in the medical community, helping the court understand whether the defendants met or breached this standard.

# What can healthcare providers learn from the Martha Rinaldi case?

Healthcare providers can learn the importance of thorough patient documentation, clear communication with patients, and regular training on best practices to minimize the risk of malpractice claims.

Find other PDF article:

<https://soc.up.edu.ph/33-gist/pdf?ID=bAo67-2767&title=into-space-2-cool-math.pdf>

## Martha Rinaldi Case Analysis

Martha Rinaldi - Case

Martha Rinaldi is a 45-year-old female who was admitted to the hospital for a medical condition. She was seen by Dr. Jonas Ulrich, who was the attending physician. Dr. Ulrich was not present during the initial assessment, and the patient was seen by Dr. Katharina ...

Martha Argerich - Case

Martha Argerich is a 45-year-old female who was admitted to the hospital for a medical condition. She was seen by Dr. ... (Martha Argerich is a 45-year-old female who was admitted to the hospital for a medical condition. She was seen by Dr. ...)

Doctor Who Martha Jones - Case

Martha Jones is a 45-year-old female who was admitted to the hospital for a medical condition. She was seen by Dr. Rose, who was the attending physician. Dr. Rose was not present during the initial assessment, and the patient was seen by Dr. Amy Donna ...

Martha - Case

Martha is a 45-year-old female who was admitted to the hospital for a medical condition. She was seen by Dr. ... 2011 ... 2011 ...

Mickey Martha - Case

Mickey Martha is a 45-year-old female who was admitted to the hospital for a medical condition. She was seen by Dr. Mickey, who was the attending physician. Dr. Mickey was not present during the initial assessment, and the patient was seen by Dr. ...

Martha Kivelson - Case

Martha Kivelson is a 45-year-old female who was admitted to the hospital for a medical condition. She was seen by Dr. Burton, who was the attending physician. Dr. Burton was not present during the initial assessment, and the patient was seen by Dr. ...

Martha Mier - Case

Martha Mier is a 45-year-old female who was admitted to the hospital for a medical condition. She was seen by Dr. ... book1 ...

Martha Chase - Case

Martha Chase (1952) is a 45-year-old female who was admitted to the hospital for a medical condition. She was seen by Dr. Alfred Hershey, who was the attending physician. Dr. Alfred Hershey was not present during the initial assessment, and the patient was seen by Dr. ...

Martha Graham - Case

Martha Graham is a 45-year-old female who was admitted to the hospital for a medical condition. She was seen by Dr. ...

## netflix 迅雷下载 - 网盘

迅雷下载Tanhaus 迅雷下载Jonas Martha 迅雷下载Jonas 迅雷下载Claudia 迅雷下载 ...

## 迅雷下载 - 网盘

迅雷下载Jonas Martha 迅雷下载Ulrich 迅雷下载Katharina 迅雷下载 ...

## 迅雷下载Martha Argerich 迅雷下载 - 网盘

迅雷下载... (迅雷下载“”...) 迅雷下载 ...

## 迅雷下载 Doctor Who 迅雷下载 Martha Jones 迅雷下载 - 网盘

迅雷下载Rose 迅雷下载Rose 迅雷下载Amy Donna 迅雷下载Martha 迅雷下载 ...

## 迅雷下载 - 网盘

迅雷下载2011 迅雷下载2011 迅雷下载 ...

## 迅雷下载Mickey 迅雷下载 Martha 迅雷下载

迅雷下载Mickey rose 迅雷下载Martha 迅雷下载

## 迅雷下载

迅雷下载Burton 迅雷下载Martha Kivelson 迅雷下载

## 迅雷下载 - 网盘

迅雷下载Martha Mier 迅雷下载book1 迅雷下载

## 迅雷下载 ...

Alfred Hershey Martha Chase (1952) 迅雷下载35S 迅雷下载32P 迅雷下载DNA 迅雷下载35S 迅雷下载32P 迅雷下载 迅雷下载35S 迅雷下载32P 迅雷下载 ...

## 迅雷下载Martha Graham 迅雷下载 - 网盘

迅雷下载Martha Graham 迅雷下载

## netflix 迅雷下载 - 网盘

迅雷下载Tanhaus 迅雷下载Jonas Martha 迅雷下载Jonas 迅雷下载Claudia 迅雷下载 ...

Explore our in-depth Martha Rinaldi case analysis to uncover key insights and strategies. Learn more about the implications and lessons in this compelling study!

[Back to Home](#)