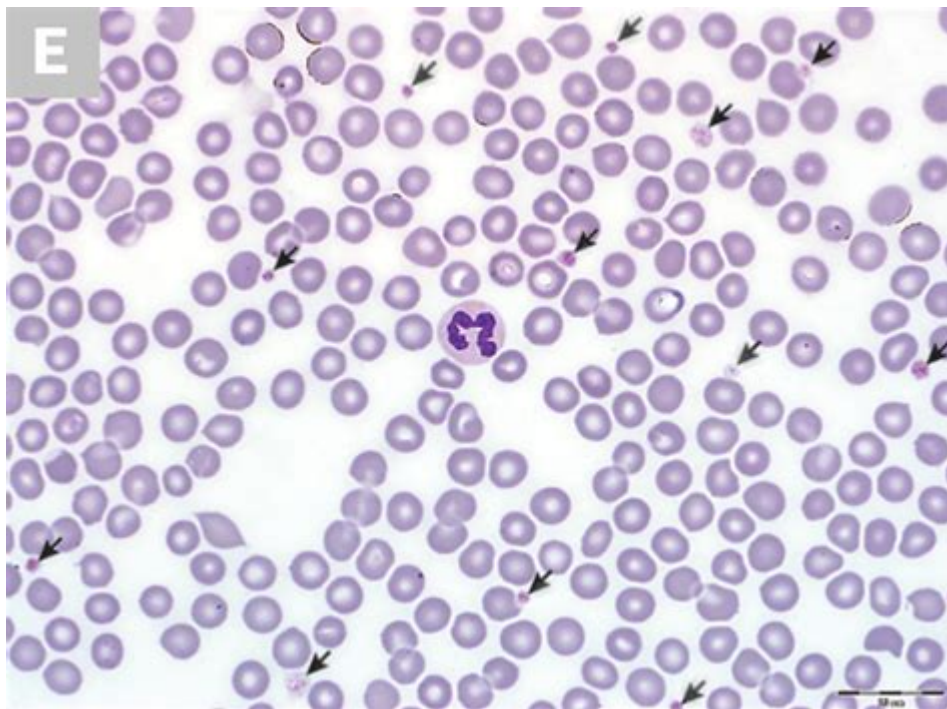


Manual Platelet Count Dogs



Manual platelet count dogs is an essential diagnostic tool used in veterinary medicine to assess the health of canine patients. Understanding the importance of platelet counts can help pet owners and veterinarians identify potential health issues early, leading to better treatment outcomes. This article delves into the significance of manual platelet counts in dogs, the procedures involved, common conditions associated with abnormal counts, and how to interpret the results effectively.

What is a Platelet Count?

Platelet counts are a measure of the number of platelets in a dog's blood. Platelets, or thrombocytes, are small cell fragments that play a crucial role in blood clotting and wound healing. An appropriate platelet count is vital for maintaining hemostasis—the process that prevents excessive bleeding when an injury occurs.

Why Perform a Manual Platelet Count?

A manual platelet count is performed for several reasons, including:

- **Diagnosis of Conditions:** Abnormal platelet counts can indicate a variety of health issues, including infections, immune disorders, or bone marrow diseases.
- **Monitoring Treatment:** For dogs undergoing treatment for existing conditions, regular platelet counts help monitor the effectiveness of the therapy.
- **Pre-Surgical Evaluation:** Veterinarians often perform platelet counts before surgery to assess the risk of excessive bleeding during procedures.

How is a Manual Platelet Count Conducted?

The process of conducting a manual platelet count involves several steps, which can typically be performed in a veterinary clinic. Here's an overview of the procedure:

1. Sample Collection

The first step in a manual platelet count is to collect a blood sample from the dog. This is usually done via venipuncture, where a needle is inserted into a vein, typically in the foreleg.

2. Sample Preparation

Once the blood sample is collected, it is placed in a tube containing an anticoagulant to prevent clotting. The sample must be mixed gently to ensure that it remains homogenous.

3. Counting Platelets

The platelet count can be conducted in two primary ways:

- Manual Counting: A veterinarian or technician uses a microscope to examine a blood smear. They count the number of platelets in a specific area of the slide and apply a formula to estimate the total platelet count per microliter of blood.
- Automated Counting: While a manual count is often preferred for accuracy, some clinics use automated analyzers that can quickly determine platelet counts. However, manual counts are frequently used to confirm automated results, especially in cases of suspected thrombocytopenia (low platelet count).

Interpreting Platelet Count Results

Normal platelet counts in dogs typically range from 200,000 to 500,000 platelets per microliter of blood. However, these values can vary based on the dog's age, breed, and health status. Here are some key points to consider when interpreting platelet count results:

1. Low Platelet Count (Thrombocytopenia)

A low platelet count can indicate several underlying conditions, including:

- Immune-Mediated Thrombocytopenia (IMT): A condition where the immune system mistakenly attacks platelets.

- Bone Marrow Disorders: Conditions such as aplastic anemia or tumors that affect the production of platelets.
- Infections: Certain infections, such as Ehrlichiosis or Leptospirosis, can lead to reduced platelet counts.
- Medications: Some drugs, particularly non-steroidal anti-inflammatory drugs (NSAIDs) and certain antibiotics, can cause thrombocytopenia as a side effect.

2. High Platelet Count (Thrombocytosis)

A high platelet count may also indicate health issues, including:

- Inflammatory Conditions: Chronic inflammation, such as that caused by arthritis or infections, can lead to increased platelet production.
- Iron Deficiency: In cases of chronic blood loss or iron deficiency anemia, the body may respond by producing more platelets.
- Certain Cancers: Some cancers, particularly those affecting the bone marrow, can cause elevated platelet levels.

Common Symptoms of Abnormal Platelet Counts

Pet owners should be vigilant for the following symptoms, which may indicate platelet-related issues:

- Unexplained Bruising or Petechiae: Small red or purple spots on the skin can suggest a low platelet count.
- Prolonged Bleeding: Excessive bleeding from minor cuts or during surgery is a sign of possible thrombocytopenia.
- Weakness or Lethargy: Dogs that are unusually tired may be experiencing an underlying health issue.
- Nosebleeds or Gums Bleeding: Frequent bleeding from the nose or gums can indicate a serious problem.

What to Do if Your Dog Has an Abnormal Platelet Count

If your veterinarian identifies an abnormal platelet count in your dog, they may recommend further diagnostic testing, which could include:

- Blood Chemistry Tests: To evaluate organ function and other blood components.
- Bone Marrow Biopsy: To check for production issues at the source.
- Infectious Disease Testing: To rule out underlying infections that may affect platelet counts.

Treatment options will depend on the underlying cause of the abnormal platelet count. Some potential treatments include:

- Medications: Corticosteroids for immune-mediated conditions, antibiotics for infections, or other specific therapies based on diagnosis.

- Blood Transfusions: In severe cases of thrombocytopenia, a transfusion may be necessary to stabilize the dog.
- Surgery: If a tumor or other obstruction is present, surgical intervention may be required.

Conclusion

In summary, understanding the significance of **manual platelet count dogs** is vital for maintaining the health and well-being of our canine companions. Regular monitoring of platelet counts can lead to early detection of potential health issues, enabling timely intervention. If you notice any symptoms related to abnormal platelet counts, consult your veterinarian promptly for appropriate testing and treatment. With early detection and proper care, many conditions associated with abnormal platelet counts can be effectively managed, ensuring your dog leads a happy and healthy life.

Frequently Asked Questions

What is a manual platelet count in dogs?

A manual platelet count in dogs is a laboratory procedure where a trained technician counts the number of platelets in a blood sample using a microscope and a hemocytometer, providing an accurate measurement of platelet levels.

Why would a veterinarian recommend a manual platelet count?

A veterinarian may recommend a manual platelet count to assess a dog's platelet levels when there are indications of bleeding disorders, thrombocytopenia, or other blood-related issues that require precise evaluation.

How does a manual platelet count differ from an automated count?

A manual platelet count involves direct counting of platelets under a microscope, while an automated count uses machines to analyze blood samples, which can sometimes lead to inaccuracies due to clumped platelets or other factors.

What are normal platelet counts for dogs?

Normal platelet counts in dogs typically range from 200,000 to 500,000 platelets per microliter of blood, but this can vary based on the dog's size, breed, and health status.

What conditions can cause low platelet counts in dogs?

Conditions that can cause low platelet counts (thrombocytopenia) in dogs include immune-mediated thrombocytopenia, infections, certain medications, bone marrow disorders, and liver disease.

What symptoms might indicate a low platelet count in dogs?

Symptoms of low platelet count in dogs include excessive bleeding, bruising, lethargy, pale gums, and signs of internal bleeding such as vomiting blood or blood in the stool.

How is a manual platelet count performed?

A manual platelet count is performed by diluting a blood sample, placing it on a hemocytometer, and then counting the platelets in a defined volume under a microscope, allowing for accurate quantification.

What is the significance of a high platelet count in dogs?

A high platelet count in dogs (thrombocytosis) can indicate underlying conditions such as inflammation, infection, or certain cancers, and may require further investigation by a veterinarian.

Can stress affect platelet counts in dogs?

Yes, stress can temporarily elevate platelet counts in dogs due to the release of platelets from the spleen during stress responses, which may affect the interpretation of test results.

How often should dogs have their platelet counts checked?

The frequency of platelet count checks in dogs depends on their health status, underlying conditions, and veterinarian recommendations, but routine checks may be performed annually or more frequently if there are health concerns.

Find other PDF article:

<https://soc.up.edu.ph/43-block/files?trackid=sOp59-0003&title=north-carolina-practice-test.pdf>

Manual Platelet Count Dogs

ManualsLib - Makes it easy to find manuals online!

Just enter the keywords in the search field and find what you are looking for! Search results include manual name, ...

Brands | ManualsLib

Search through 3.000.000 manuals online & and download pdf manuals.

HONEYWELL HOME PRO SERIES USER MANUAL Pdf Download

View and Download Honeywell Home Pro Series user manual online. Home Pro Series thermostat pdf manual ...

GRACO 4EVER INSTRUCTION MANUAL Pdf Download | Man...

View and Download Graco 4Ever instruction manual online. All-in-one Car Seat. 4Ever car seat pdf manual ...

LOGITECH K400 PLUS QUICK MANUAL Pdf Download | Man...

View and Download Logitech K400 Plus quick manual online. K400 Plus keyboard pdf manual download.

ManualsLib - Makes it easy to find manuals online!

Just enter the keywords in the search field and find what you are looking for! Search results include manual name, description, size and number of pages. You can either read manual online or ...

Brands | ManualsLib

Search through 3.000.000 manuals online & and download pdf manuals.

HONEYWELL HOME PRO SERIES USER MANUAL Pdf Download

View and Download Honeywell Home Pro Series user manual online. Home Pro Series thermostat pdf manual download. Also for: T6 pro.

GRACO 4EVER INSTRUCTION MANUAL Pdf Download | ManualsLib

View and Download Graco 4Ever instruction manual online. All-in-one Car Seat. 4Ever car seat pdf manual download.

LOGITECH K400 PLUS QUICK MANUAL Pdf Download | ManualsLib

View and Download Logitech K400 Plus quick manual online. K400 Plus keyboard pdf manual download.

BLUE YETI OWNER'S MANUAL Pdf Download | ManualsLib

View and Download Blue Yeti owner's manual online. Ultimate USB microphone for professional recording. Yeti microphone pdf manual download.

DELTA MS300 SERIES USER MANUAL Pdf Download

View and Download Delta MS300 Series user manual online. Standard Compact Drive. MS300 Series storage pdf manual download.

GRACO EXTEND2FIT INSTRUCTION MANUAL Pdf Download

View and Download Graco Extend2Fit instruction manual online. 3-in-1 Car Seat. Extend2Fit car seat pdf manual download.

ACORN SUPERGLIDE 130 USER MANUAL Pdf Download

View and Download Acorn Superglide 130 user manual online. Straight Stairlift. Superglide 130 stairlifts pdf manual download.

ATWOOD PILOT 6 GALLON USER MANUAL Pdf Download

View and Download Atwood Pilot 6 Gallon user manual online. Pilot 6 Gallon water heater pdf manual download. Also for: Electronic ignition 10 gallon, Pilot 10 gallon, Electronic ignition 6 gallon, Ch6-4e, Gch6-6e, Gch6-7e, Gc6a-7e, Gh6-6e, Gh6-7e, Gh6-8e, G6a-6e, G6a-7e, G6a-8e,...

Discover how to perform a manual platelet count in dogs. This essential guide provides step-by-step instructions and tips for accurate results. Learn more!

[Back to Home](#)