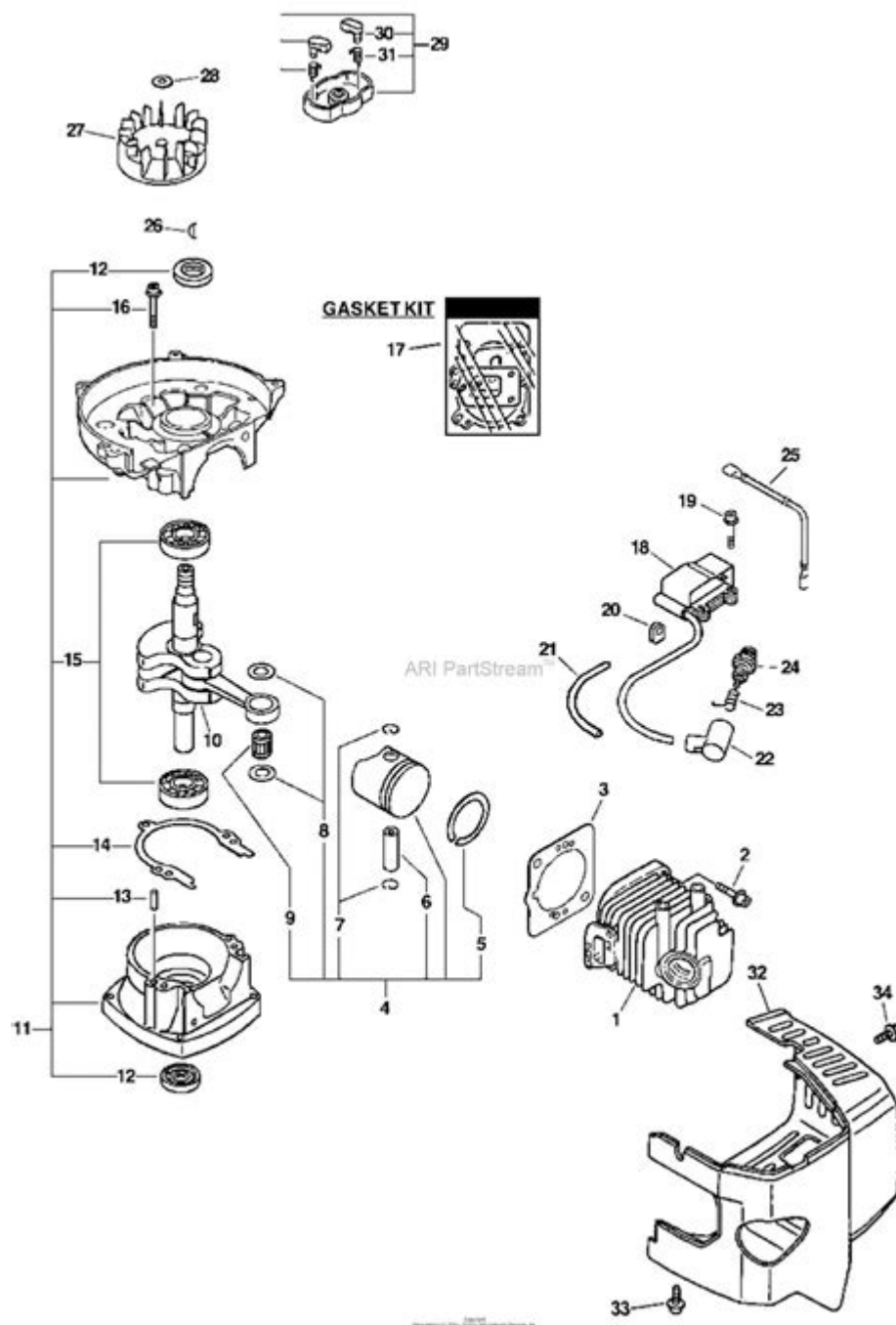


Mantis Tiller 7222 Parts Diagram



Mantis tiller 7222 parts diagram is an essential resource for anyone who owns or operates this versatile gardening tool. Understanding the parts and their functions can make maintenance, repair, and operation much smoother. In this article, we will explore the various components of the Mantis tiller 7222, the importance of each part, and how to refer to the parts diagram for proper maintenance and repair.

Overview of the Mantis Tiller 7222

The Mantis tiller 7222 is a lightweight, easy-to-use tiller designed for home gardeners and small-scale farmers. Known for its powerful engine and compact design, it is particularly effective for tasks such as tilling soil, mixing compost, and aerating gardens. The tiller's unique design allows it to maneuver easily in tight spaces, making it ideal for raised beds and small plots.

Key Features of the Mantis Tiller 7222

1. **Powerful Engine:** The Mantis tiller 7222 is equipped with a robust engine that provides ample power for tilling and cultivating.
2. **Compact Design:** Its lightweight and compact structure make it easy to handle and transport.
3. **Versatile Tines:** The tiller comes with multiple tine options that can be swapped out depending on the gardening task at hand.
4. **Easy Operation:** Simple controls and ergonomic design make it user-friendly for both beginners and experienced gardeners.

Importance of the Parts Diagram

A parts diagram is a visual representation of the various components of the Mantis tiller 7222. It is an invaluable tool for:

- **Maintenance:** Understanding how components fit together helps in regular maintenance tasks.
- **Repair:** Identifying faulty parts becomes easier when you have a clear diagram.
- **Replacement:** Knowing the part numbers and names simplifies the ordering process for replacements.

Understanding the Mantis Tiller 7222 Parts Diagram

The parts diagram for the Mantis tiller 7222 can usually be found in the user manual or on the manufacturer's website. It is divided into sections that correspond to different assemblies or areas of the tiller. Here are the primary components typically represented in the diagram.

Main Components

- **Engine Assembly**
 - Fuel Tank
 - Carburetor

- Air Filter

- **Tine Assembly**
 - Forward Tines
 - Reverse Tines

- **Transmission Assembly**
 - Gearbox
 - Drive Belt

- **Handlebar Assembly**
 - Throttle Control
 - On/Off Switch

- **Chassis**
 - Frame
 - Wheels

Detailed Examination of Key Parts

Let's dive deeper into some of the essential parts of the Mantis tiller 7222 and their roles.

Engine Assembly

The engine is the heart of the Mantis tiller 7222. It powers the tines and enables the tiller to break up soil effectively. Key components include:

- Fuel Tank: Stores the fuel needed for operation.

- Carburetor: Mixes air and fuel for combustion.
- Air Filter: Prevents debris from entering the engine, ensuring optimal performance.

Tine Assembly

The tine assembly is crucial for the tilling process. The tiller usually comes with:

- Forward Tines: Designed for breaking up and turning soil.
- Reverse Tines: Used for cultivating and mixing compost into the soil.

Choosing the right tine configuration can significantly affect the efficiency of your gardening tasks.

Transmission Assembly

The transmission assembly transfers power from the engine to the tines. Key parts include:

- Gearbox: Adjusts the speed and torque of the tiller.
- Drive Belt: Connects the engine to the gearbox, allowing for smooth operation.

Regular inspection of the transmission is essential to ensure it operates efficiently and avoids breakdowns.

Handlebar Assembly

The handlebar assembly is where the operator controls the tiller. Important components include:

- Throttle Control: Regulates engine speed based on user input.
- On/Off Switch: Allows for easy operation and safety when starting or stopping the engine.

Chassis

The chassis provides the structural integrity of the tiller. Its components include:

- Frame: The main body that holds all the parts together.
- Wheels: Facilitate easy movement and transport of the tiller.

A sturdy chassis ensures that the tiller can withstand the rigors of frequent use.

Maintenance Tips for Mantis Tiller 7222 Parts

Maintaining the various parts of the Mantis tiller 7222 is crucial for extending its lifespan and ensuring optimal performance. Here are some tips:

1. **Regularly Check Oil Levels:** Ensure the engine oil is at the appropriate level and change it as

needed.

2. **Clean the Air Filter:** A clean air filter allows for better airflow, improving engine efficiency.
3. **Inspect Tines for Wear and Tear:** Replace worn tines to maintain effective tilling.
4. **Lubricate Moving Parts:** Regular lubrication reduces friction and extends the life of components.
5. **Check Belts and Cables:** Inspect for fraying or damage and replace as necessary.

Where to Find Replacement Parts

When it comes to replacing parts for the Mantis tiller 7222, consider the following options:

- Official Mantis Website: The manufacturer often provides genuine parts that are guaranteed to fit.
- Local Garden Centers: Some local retailers may carry parts or can order them for you.
- Online Marketplaces: Websites such as Amazon or eBay often have a variety of replacement parts available.

Conclusion

Understanding the Mantis tiller 7222 parts diagram is vital for any user looking to maintain, repair, or operate this efficient gardening tool. By familiarizing yourself with the main components and their functions, you can ensure that your tiller operates smoothly and lasts for many gardening seasons. Regular maintenance and timely replacement of parts will not only enhance performance but also make your gardening tasks more enjoyable. Always refer to the parts diagram and user manual for the best guidance in maintaining your Mantis tiller 7222.

Frequently Asked Questions

What is a Mantis Tiller 7222 parts diagram used for?

The Mantis Tiller 7222 parts diagram is used to identify and understand the components of the tiller, aiding in repairs and maintenance.

Where can I find a Mantis Tiller 7222 parts diagram?

You can find the Mantis Tiller 7222 parts diagram on the official Mantis website, in the user manual, or through authorized dealers.

What parts are commonly included in the Mantis Tiller 7222 diagram?

Common parts include the engine, tines, gear case, throttle control, handle assembly, and various screws and bolts.

How do I interpret the Mantis Tiller 7222 parts diagram?

To interpret the diagram, match the labeled parts with your tiller's components, ensuring you understand their arrangement and function.

Can I order replacement parts using the Mantis Tiller 7222 parts diagram?

Yes, you can order replacement parts by referencing the parts diagram to ensure you select the correct components.

Is the Mantis Tiller 7222 parts diagram available in PDF format?

Yes, many users can find the Mantis Tiller 7222 parts diagram available for download in PDF format on the Mantis website or through service manuals.

What should I do if a part in the Mantis Tiller 7222 diagram is not available?

If a part is not available, consider contacting Mantis customer service or looking for compatible aftermarket parts.

Are there any online forums or communities for Mantis Tiller 7222 users?

Yes, there are several online forums and communities where Mantis Tiller users share tips, troubleshooting advice, and parts information.

Find other PDF article:

<https://soc.up.edu.ph/63-zoom/pdf?dataid=iCq75-8906&title=true-stories-of-the-supernatural.pdf>

[Mantis Tiller 7222 Parts Diagram](#)

Mantis Bug Tracker

MantisBT makes collaboration with team members & clients easy, fast, and professional MantisBT is an open source issue tracker that provides a delicate balance between simplicity and power. ...

Admin Guide - Mantis Bug Tracker

This book is targeted at MantisBT administrators, and documents the installation, upgrade, configuration, customization and administration tasks required to operate the software.

Mantis Bug Tracker

Jan 3, 2020 · MantisBT is a popular free web-based bug tracking system. It is written in PHP works with MySQL, MS SQL, and PostgreSQL databases. MantisBT has been installed on ...

Mantis Bug Tracker | Demo

MantisBT is a popular free web-based bug tracking system. It is written in PHP works with MySQL, MS SQL, and PostgreSQL databases. MantisBT has been installed on Windows, ...

Mantis Bug Tracker | MantisBT Hosting

MantisBT is a popular free web-based bug tracking system. It is written in PHP works with MySQL, MS SQL, and PostgreSQL databases. MantisBT has been installed on Windows, ...

Mantis Feature List [Mantis Bug Tracker Wiki]

Jan 15, 2019 · Mantis is an issue tracker that is implemented in PHP. The main features include:

Change Log - MantisBT

0023446: [performance] Unneeded files delivered if Mantis Graphs plugin is enabled (atrol)

0023474: [custom fields] Empty numeric fields should be display as empty rather than 0 ...

Mantis Bug Tracker Wiki

Apr 4, 2024 · Mantis Bug Tracker Wiki Welcome to Mantis Bug Tracker Wiki. This wiki is integrated with the bug tracker. Once users are logged into Mantis, they will be authenticated ...

Forgot or Resend password - Mantis Bug Tracker - Forums

Mar 14, 2009 · FURTHER: I've deleted the MYSQL tables in the mantis database - I've removed the old mantis directory in the server I've downloaded the latest MANTIS files & installed all ...

Mantis Bug Tracker | Support

MantisBT is a popular free web-based bug tracking system. It is written in PHP works with MySQL, MS SQL, and PostgreSQL databases. MantisBT has been installed on Windows, ...

Mantis Bug Tracker

MantisBT makes collaboration with team members & clients easy, fast, and professional MantisBT is an open source issue tracker that provides a delicate balance between simplicity and power. Users are able to get started in minutes and start managing their projects while collaborating with their teammates and clients effectively. Once you start using it, you will never go back!

Admin Guide - Mantis Bug Tracker

This book is targeted at MantisBT administrators, and documents the installation, upgrade, configuration, customization and administration tasks required to operate the software.

Mantis Bug Tracker

Jan 3, 2020 · MantisBT is a popular free web-based bug tracking system. It is written in PHP works with MySQL, MS SQL, and PostgreSQL databases. MantisBT has been installed on Windows, Linux, Mac OS, OS/2, and others. It is released under the terms of the GNU General Public License (GPL).

Mantis Bug Tracker | Demo

MantisBT is a popular free web-based bug tracking system. It is written in PHP works with MySQL, MS SQL, and PostgreSQL databases. MantisBT has been installed on Windows, Linux, Mac OS, OS/2, and others. It is released under the terms of ...

Mantis Bug Tracker | MantisBT Hosting

MantisBT is a popular free web-based bug tracking system. It is written in PHP works with MySQL, MS SQL, and PostgreSQL databases. MantisBT has been installed on Windows, Linux, Mac OS, OS/2, and others. It is released under the terms of ...

Mantis Feature List [Mantis Bug Tracker Wiki]

Jan 15, 2019 · Mantis is an issue tracker that is implemented in PHP. The main features include:

Change Log - MantisBT

0023446: [performance] Unneeded files delivered if Mantis Graphs plugin is enabled (atrol)

0023474: [custom fields] Empty numeric fields should be display as empty rather than 0
(community)

Mantis Bug Tracker Wiki

Apr 4, 2024 · Mantis Bug Tracker Wiki Welcome to Mantis Bug Tracker Wiki. This wiki is integrated with the bug tracker. Once users are logged into Mantis, they will be authenticated in the Wiki as well. The current settings allow logged-in users to contribute to already existing pages.

Forgot or Resend password - Mantis Bug Tracker - Forums

Mar 14, 2009 · FURTHER: I've deleted the MYSQL tables in the mantis database - I've removed the old mantis directory in the server I've downloaded the latest MANTIS files & installed all the MYSQL tables etc I *CAN* Log in - but when i change my password, i get: APPLICATION ERROR #2800 Invalid form security token. This could be caused by a session timeout, or ...

Mantis Bug Tracker | Support

MantisBT is a popular free web-based bug tracking system. It is written in PHP works with MySQL, MS SQL, and PostgreSQL databases. MantisBT has been installed on Windows, Linux, Mac OS, OS/2, and others. It is released under the terms of ...

Explore our detailed mantis tiller 7222 parts diagram to identify components and enhance your tiller's performance. Learn more for effective maintenance tips!

[Back to Home](#)