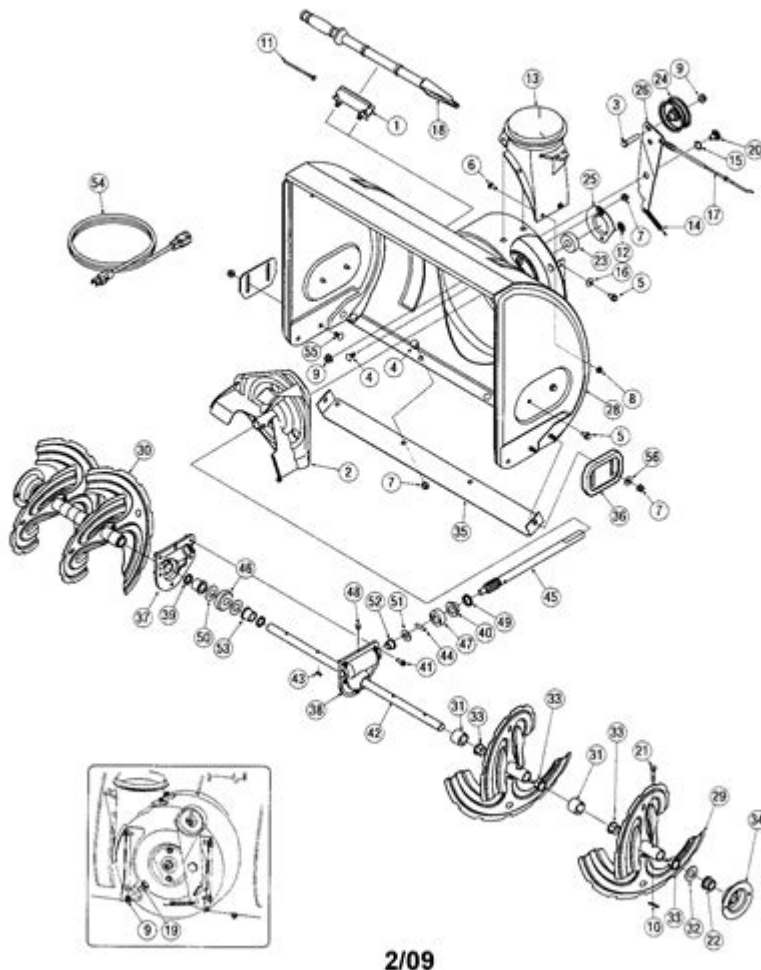


# Manual Mtd Snowblower Parts Diagram



**Manual MTD snowblower parts diagram** is an essential resource for anyone who owns or operates an MTD snowblower. Understanding the various components of your snowblower and how they fit together is critical for proper maintenance and repair. This article will provide a detailed overview of MTD snowblower parts, how to read a parts diagram, and tips for effective maintenance.

## Understanding MTD Snowblower Parts

MTD, or Modern Tool and Die, is a well-known manufacturer that produces a range of outdoor power equipment, including snowblowers. Knowing the individual parts of your MTD snowblower can help you troubleshoot issues, perform repairs, and ensure your machine operates efficiently during the

winter months.

## Key Components of MTD Snowblowers

Here are some of the main components you'll typically find in an MTD snowblower:

- **Engine:** The power source of the snowblower, responsible for driving the auger and impeller.
- **Auger:** The rotating blades that collect and break up snow, feeding it into the impeller.
- **Impeller:** The fan-like component that throws the snow out of the chute.
- **Chute:** The discharge tube that directs snow away from the snowblower.
- **Handlebars:** The part of the machine you hold, which often includes controls for operation.
- **Skid Shoes:** Adjustable pieces that help control the height of the snowblower over the ground surface.
- **Drive Belt:** The belt that transfers power from the engine to the auger and impeller.
- **Fuel Tank:** The reservoir that holds the gasoline needed to power the engine.
- **Cabin/Body:** The main structure that houses the engine and components.

## Importance of the Parts Diagram

A manual MTD snowblower parts diagram is a visual representation of the various components of the snowblower. It helps users identify parts, learn their functions, and understand how they connect with each other. Here are some reasons why having this diagram is crucial:

- **Easy Identification:** Quickly locate specific parts when you need replacements or repairs.
- **Understanding Functionality:** Learn how each component works in concert to clear snow effectively.

- **Guided Maintenance:** Follow the diagram for maintenance tasks, ensuring that you're addressing every necessary component.
- **Effective Repairs:** Troubleshoot issues by comparing your snowblower's performance with the diagram.

## Where to Find MTD Snowblower Parts Diagrams

MTD provides several resources where you can find parts diagrams, including:

1. **MTD Official Website:** The official MTD website has a dedicated section for customer support, including parts diagrams for various models.
2. **Owner's Manual:** Your snowblower should have come with an owner's manual, which typically includes a parts diagram.
3. **Online Retailers:** Websites like Amazon and eBay often have parts diagrams for specific models.
4. **Repair Websites:** Websites like RepairClinic and PartsTree specialize in providing parts diagrams and selling replacement parts.

## How to Read an MTD Snowblower Parts Diagram

Reading a parts diagram may seem complicated at first, but it becomes easier once you grasp the basics. Here's a step-by-step guide on how to interpret the diagram:

### Step 1: Identify the Model

Before you can use a parts diagram, ensure you have the correct diagram for your specific model. MTD offers a variety of snowblower models, and parts may differ between them.

### Step 2: Understand the Layout

Most diagrams will be divided into sections based on the snowblower's major components (e.g., engine, auger, impeller). Familiarize yourself with the layout to help you find parts quickly.

## Step 3: Locate the Part Numbers

Each component in the diagram is typically labeled with a part number. This number is essential when ordering replacement parts, as it ensures you get the right piece for your snowblower.

## Step 4: Review Descriptions

Some diagrams will also include a parts list with descriptions, quantities, and additional information. This can be helpful for understanding how many of each part you may need for repairs or maintenance.

## Maintenance Tips for Your MTD Snowblower

Proper maintenance is key to ensuring your MTD snowblower operates efficiently throughout the winter season. Here are some maintenance tips that can keep your machine in top shape:

- **Regular Oil Changes:** Change the engine oil according to the manufacturer's recommendations to keep the engine running smoothly.
- **Inspect Belts and Cables:** Regularly check the drive belt and cables for wear and tear. Replace them as necessary to avoid breakdowns.
- **Clear Snow Debris:** After each use, clear any snow and ice from the auger and impeller to prevent rust and corrosion.
- **Check Skid Shoes:** Adjust the skid shoes to ensure they are at the correct height for the surface you're clearing.
- **Fuel Maintenance:** Use fresh fuel and consider adding a fuel stabilizer to prevent degradation during off-seasons.
- **Store Properly:** Store your snowblower in a dry place and consider using a cover to protect it from dust and moisture.

## Conclusion

Understanding the **manual MTD snowblower parts diagram** is a vital step in maintaining your snowblower and ensuring it operates efficiently throughout the winter months. By familiarizing yourself with the components, utilizing

diagrams effectively, and adhering to maintenance practices, you can enjoy a reliable and effective snow-clearing experience. Whether you're looking to troubleshoot an issue or perform regular maintenance, the knowledge gained from the parts diagram will serve you well in keeping your MTD snowblower in peak condition.

## **Frequently Asked Questions**

### **What is a manual MTD snowblower parts diagram?**

A manual MTD snowblower parts diagram is a visual representation that shows the various components of an MTD snowblower, helping users identify parts for maintenance, repair, or replacement.

### **Where can I find the manual MTD snowblower parts diagram?**

You can find the manual MTD snowblower parts diagram on MTD's official website, in the user manual that came with your snowblower, or through authorized dealers and repair shops.

### **Why is it important to refer to the parts diagram for my MTD snowblower?**

Referring to the parts diagram is important for understanding the assembly of your snowblower, ensuring correct repairs, and ordering the right replacement parts.

### **How do I read an MTD snowblower parts diagram?**

To read an MTD snowblower parts diagram, familiarize yourself with the part labels and numbers, which correspond to a list of parts, often including descriptions and part numbers for ordering.

### **Can I get a parts diagram for older MTD snowblower models?**

Yes, parts diagrams for older MTD snowblower models are often available through MTD's customer service or archived manuals on their website, as well as through third-party repair sites.

### **What should I do if I cannot find a specific part in the diagram?**

If you cannot find a specific part in the diagram, consult MTD customer support, check with local dealers, or explore online marketplaces that specialize in MTD snowblower parts.

## **Are there different diagrams for different MTD snowblower models?**

Yes, there are different diagrams for different MTD snowblower models, as each model may have unique components and configurations.

## **How can I ensure I have the correct part number from the diagram?**

To ensure you have the correct part number, cross-reference the part number found in the diagram with the part number in the parts list, and verify it with your snowblower's model number.

## **Is it advisable to use third-party parts with my MTD snowblower?**

While third-party parts can be more affordable, it's advisable to use OEM (Original Equipment Manufacturer) parts for compatibility and reliability; always check the specifications before using third-party options.

Find other PDF article:

<https://soc.up.edu.ph/52-snap/pdf?trackid=vTQ10-5151&title=scandinavian-star-ornament-history.pdf>

## **Manual Mtd Snowblower Parts Diagram**

### **ManualsLib - Makes it easy to find manuals online!**

Just enter the keywords in the search field and find what you are looking for! Search results include manual name, description, size and number of pages. You can either read manual ...

*Brands | ManualsLib*

Search through 3.000.000 manuals online & and download pdf manuals.

### **HONEYWELL HOME PRO SERIES USER MANUAL Pdf Download**

View and Download Honeywell Home Pro Series user manual online. Home Pro Series thermostat pdf manual download. Also for: T6 pro.

### **GRACO 4EVER INSTRUCTION MANUAL Pdf Download**

View and Download Graco 4Ever instruction manual online. All-in-one Car Seat. 4Ever car seat pdf manual download.

### **LOGITECH K400 PLUS QUICK MANUAL Pdf Download**

View and Download Logitech K400 Plus quick manual online. K400 Plus keyboard pdf manual download.

### *BLUE YETI OWNER'S MANUAL Pdf Download | ManualsLib*

View and Download Blue Yeti owner's manual online. Ultimate USB microphone for professional recording. Yeti microphone pdf manual download.

### **DELTA MS300 SERIES USER MANUAL Pdf Download**

View and Download Delta MS300 Series user manual online. Standard Compact Drive. MS300 Series storage pdf manual download.

### **GRACO EXTEND2FIT INSTRUCTION MANUAL Pdf Download**

View and Download Graco Extend2Fit instruction manual online. 3-in-1 Car Seat. Extend2Fit car seat pdf manual download.

### **ACORN SUPERGLIDE 130 USER MANUAL Pdf Download**

View and Download Acorn Superglide 130 user manual online. Straight Stairlift. Superglide 130 stairlifts pdf manual download.

### *ATWOOD PILOT 6 GALLON USER MANUAL Pdf Download*

View and Download Atwood Pilot 6 Gallon user manual online. Pilot 6 Gallon water heater pdf manual download. Also for: Electronic ignition 10 gallon, Pilot 10 gallon, Electronic ignition 6 ...

### *ManualsLib - Makes it easy to find manuals online!*

Just enter the keywords in the search field and find what you are looking for! Search results include manual name, description, size and number of pages. You can either read manual ...

### **Brands | ManualsLib**

Search through 3.000.000 manuals online & and download pdf manuals.

### **HONEYWELL HOME PRO SERIES USER MANUAL Pdf Download**

View and Download Honeywell Home Pro Series user manual online. Home Pro Series thermostat pdf manual download. Also for: T6 pro.

### **GRACO 4EVER INSTRUCTION MANUAL Pdf Download | ManualsLib**

View and Download Graco 4Ever instruction manual online. All-in-one Car Seat. 4Ever car seat pdf manual download.

### LOGITECH K400 PLUS QUICK MANUAL Pdf Download | ManualsLib

View and Download Logitech K400 Plus quick manual online. K400 Plus keyboard pdf manual download.

### *BLUE YETI OWNER'S MANUAL Pdf Download | ManualsLib*

View and Download Blue Yeti owner's manual online. Ultimate USB microphone for professional recording. Yeti microphone pdf manual download.

### *DELTA MS300 SERIES USER MANUAL Pdf Download*

View and Download Delta MS300 Series user manual online. Standard Compact Drive. MS300 Series storage pdf manual download.

### **GRACO EXTEND2FIT INSTRUCTION MANUAL Pdf Download**

View and Download Graco Extend2Fit instruction manual online. 3-in-1 Car Seat. Extend2Fit car seat pdf manual download.

### **ACORN SUPERGLIDE 130 USER MANUAL Pdf Download**

View and Download Acorn Superglide 130 user manual online. Straight Stairlift. Superglide 130 stairlifts pdf manual download.

### ATWOOD PILOT 6 GALLON USER MANUAL Pdf Download

View and Download Atwood Pilot 6 Gallon user manual online. Pilot 6 Gallon water heater pdf manual download. Also for: Electronic ignition 10 gallon, Pilot 10 gallon, Electronic ignition 6 gallon, Ch6-4e, Gch6-6e, Gch6-7e, Gc6a-7e, Gh6-6e, ...

Discover how to easily locate and understand your manual MTD snowblower parts diagram. Find the right parts for efficient snow removal. Learn more!

[Back to Home](#)