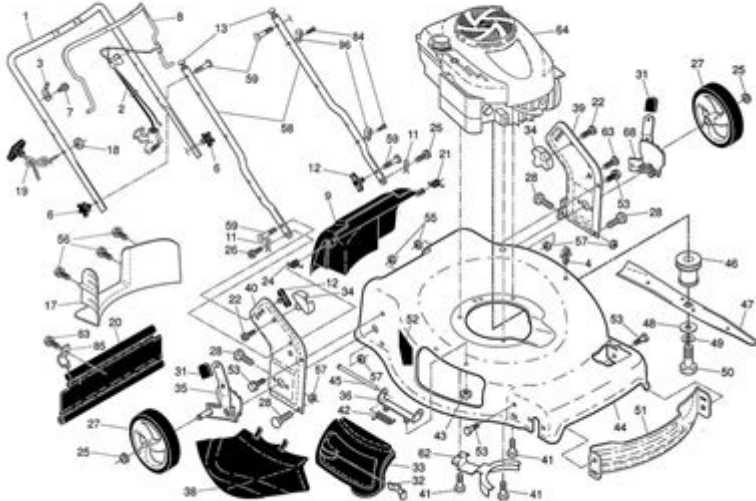


Manual Craftsman Self Propelled Lawn Mower Parts Diagram



3/12

Manual craftsman self propelled lawn mower parts diagram is essential for any owner looking to understand their lawn mowers better, perform maintenance, or make necessary repairs. Knowing the components of your lawn mower can significantly enhance its longevity and performance. This article will delve into the various parts of a Craftsman self-propelled lawn mower, illustrating their functions, maintenance tips, and how they interact within the machine.

Understanding the Basics of a Craftsman Self-Propelled Lawn Mower

Before diving into the parts diagram, it's crucial to grasp how a self-propelled lawn mower operates. Unlike push mowers, self-propelled models come with a drive system that propels the mower forward, allowing the user to walk behind it without exerting much effort. This feature is particularly beneficial for larger lawns or uneven terrain.

The Key Components of a Self-Propelled Lawn Mower

To better understand the manual Craftsman self-propelled lawn mower parts diagram, let's break down the essential components:

1. Engine: The heart of the mower, responsible for generating power.

2. Transmission: Converts engine power into motion, allowing the mower to move forward.
3. Deck: The housing that contains the cutting blades and protects them while in operation.
4. Cutting Blades: Sharp metal blades that cut grass to the desired height.
5. Wheels: Provide mobility and stability; some models may have rear-wheel or front-wheel drive.
6. Handlebar: The control center for the user, often equipped with throttle and speed controls.
7. Drive Belt: Connects the engine to the wheels, transferring power.
8. Air Filter: Ensures that the engine receives clean air for combustion.
9. Fuel Tank: Holds gasoline to power the engine.
10. Chassis: The frame that supports all other components.

Detailed Parts Diagram Explanation

Understanding the parts diagram involves recognizing how each component fits into the overall system. Here's a breakdown of how these parts work together:

1. Engine

The engine is typically a gas-powered four-stroke engine, designed for efficiency and power. It converts fuel into mechanical energy, which propels the mower.

- Maintenance Tips:
- Regularly check the oil levels and change the oil as per the manufacturer's recommendations.
- Clean or replace the air filter to ensure optimal airflow.

2. Transmission

The transmission manages the speed of the mower. It often includes gears that can be adjusted based on the terrain and user preference.

- Maintenance Tips:
- Inspect the transmission for any leaks.
- Lubricate the gears as necessary.

3. Deck

The deck protects the internal components and houses the cutting blades. It is usually made from durable metal to withstand wear and tear.

- Maintenance Tips:
- Regularly clean the underside of the deck to prevent grass buildup.
- Check for any signs of rust or damage.

4. Cutting Blades

The blades are crucial for achieving a clean cut. They are usually made from hardened steel to maintain their sharpness and durability.

- Maintenance Tips:
- Sharpen the blades at least once a season.
- Replace dull or damaged blades to ensure an even cut.

5. Wheels

The wheels determine the mower's maneuverability. Depending on the model, they may have different sizes and tread patterns.

- Maintenance Tips:
- Check for proper inflation and wear on the tires.
- Lubricate wheel bearings to ensure smooth operation.

6. Handlebar

The handlebar is where the operator controls the mower. It often has safety features like a blade brake and throttle control.

- Maintenance Tips:
- Keep the handle clean and dry for a good grip.
- Check for any loose screws or fittings.

7. Drive Belt

The drive belt connects the engine to the wheels, and any wear or damage can affect the mower's performance.

- Maintenance Tips:
- Inspect for fraying or cracks.
- Replace if necessary to maintain proper function.

8. Air Filter

The air filter prevents dirt and debris from entering the engine, which can cause damage and reduce efficiency.

- Maintenance Tips:
- Clean or replace the air filter regularly.

- Ensure it fits securely to avoid air leaks.

9. Fuel Tank

The fuel tank is where gasoline is stored. It should be checked frequently for leaks or clogs.

- Maintenance Tips:
- Use fresh gasoline to prevent engine issues.
- Clean the tank to remove any residue.

10. Chassis

The chassis supports the mower's weight and houses various components. A sturdy chassis ensures stability during operation.

- Maintenance Tips:
- Inspect for cracks or bends.
- Keep it clean to prevent rust.

Common Issues and Troubleshooting Tips

Even with regular maintenance, issues can arise. Here are some common problems and troubleshooting tips:

- **Mower won't start:** Check the fuel level, spark plug condition, and battery charge.
- **Uneven cutting:** Ensure that the blades are sharp and that the mower deck is level.
- **Strange noises:** Inspect for loose parts or foreign objects caught in the blades or deck.
- **Excessive vibration:** This could indicate unbalanced blades or loose components; check and tighten as needed.

Conclusion

Understanding the **manual craftsman self propelled lawn mower parts diagram** is vital for proper maintenance and efficient operation. Familiarizing yourself with the components and their functions not only helps in troubleshooting but also enhances your mowing experience. By regularly maintaining each part, you can ensure that your lawn mower remains in optimal condition for years to come. Whether you're a seasoned gardener or a new homeowner, this knowledge will equip you to

take better care of your lawn mower and keep your yard looking pristine.

Frequently Asked Questions

What is a manual craftsman self propelled lawn mower parts diagram?

A manual craftsman self propelled lawn mower parts diagram is a visual representation that illustrates the different components and parts of the mower, helping users identify and understand each part's function and location.

Where can I find a parts diagram for my craftsman self propelled lawn mower?

You can find the parts diagram for your craftsman self propelled lawn mower on the official Craftsman website, in the user manual, or through online lawn mower parts retailers that provide diagrams for various models.

Why is it important to have a parts diagram for lawn mower maintenance?

Having a parts diagram is crucial for lawn mower maintenance as it allows owners to easily identify parts that need repair or replacement, ensures proper assembly, and aids in troubleshooting mechanical issues.

Can I repair my lawn mower myself using the parts diagram?

Yes, you can repair your lawn mower yourself using the parts diagram, as it provides detailed information about each component, making it easier to locate and replace faulty parts.

Do all craftsman self propelled lawn mowers have the same parts diagram?

No, not all craftsman self propelled lawn mowers have the same parts diagram; diagrams vary by model, so it's important to refer to the specific diagram that corresponds to your mower's model number.

What should I do if a part in the diagram is missing from my lawn mower?

If a part in the diagram is missing from your lawn mower, you should check with a local dealer or an online parts supplier to purchase the missing component, and ensure that you have the correct part for your specific model.

Find other PDF article:

<https://soc.up.edu.ph/18-piece/pdf?dataid=MkE97-7895&title=dr-oz-diet-supplement-list.pdf>

[Manual Craftsman Self Propelled Lawn Mower Parts Diagram](#)

ManualsLib - Makes it easy to find manuals online!

Just enter the keywords in the search field and find what you are looking for! Search results include manual name, description, size and number of pages. You can either read manual ...

[Brands | ManualsLib](#)

Search through 3.000.000 manuals online & and download pdf manuals.

HONEYWELL HOME PRO SERIES USER MANUAL Pdf Download

View and Download Honeywell Home Pro Series user manual online. Home Pro Series thermostat pdf manual download. Also for: T6 pro.

GRACO 4EVER INSTRUCTION MANUAL Pdf Download

View and Download Graco 4Ever instruction manual online. All-in-one Car Seat. 4Ever car seat pdf manual download.

[LOGITECH K400 PLUS QUICK MANUAL Pdf Download](#)

View and Download Logitech K400 Plus quick manual online. K400 Plus keyboard pdf manual download.

[BLUE YETI OWNER'S MANUAL Pdf Download | ManualsLib](#)

View and Download Blue Yeti owner's manual online. Ultimate USB microphone for professional recording. Yeti microphone pdf manual download.

DELTA MS300 SERIES USER MANUAL Pdf Download

View and Download Delta MS300 Series user manual online. Standard Compact Drive. MS300 Series storage pdf manual download.

GRACO EXTEND2FIT INSTRUCTION MANUAL Pdf Download

View and Download Graco Extend2Fit instruction manual online. 3-in-1 Car Seat. Extend2Fit car seat pdf manual download.

ACORN SUPERGLIDE 130 USER MANUAL Pdf Download

View and Download Acorn Superglide 130 user manual online. Straight Stairlift. Superglide 130 stairlifts pdf manual download.

ATWOOD PILOT 6 GALLON USER MANUAL Pdf Download

View and Download Atwood Pilot 6 Gallon user manual online. Pilot 6 Gallon water heater pdf manual download. Also for: Electronic ignition 10 gallon, Pilot 10 gallon, Electronic ignition 6 ...

[ManualsLib - Makes it easy to find manuals online!](#)

Just enter the keywords in the search field and find what you are looking for! Search results include manual name, description, size and number of pages. You can either read manual ...

[Brands | ManualsLib](#)

Search through 3.000.000 manuals online & and download pdf manuals.

HONEYWELL HOME PRO SERIES USER MANUAL Pdf Download

View and Download Honeywell Home Pro Series user manual online. Home Pro Series thermostat pdf manual download. Also for: T6 pro.

GRACO 4EVER INSTRUCTION MANUAL Pdf Download | ManualsLib

View and Download Graco 4Ever instruction manual online. All-in-one Car Seat. 4Ever car seat pdf manual download.

LOGITECH K400 PLUS QUICK MANUAL Pdf Download | ManualsLib

View and Download Logitech K400 Plus quick manual online. K400 Plus keyboard pdf manual download.

BLUE YETI OWNER'S MANUAL Pdf Download | ManualsLib

View and Download Blue Yeti owner's manual online. Ultimate USB microphone for professional recording. Yeti microphone pdf manual download.

DELTA MS300 SERIES USER MANUAL Pdf Download

View and Download Delta MS300 Series user manual online. Standard Compact Drive. MS300 Series storage pdf manual download.

GRACO EXTEND2FIT INSTRUCTION MANUAL Pdf Download

View and Download Graco Extend2Fit instruction manual online. 3-in-1 Car Seat. Extend2Fit car seat pdf manual download.

ACORN SUPERGLIDE 130 USER MANUAL Pdf Download

View and Download Acorn Superglide 130 user manual online. Straight Stairlift. Superglide 130 stairlifts pdf manual download.

ATWOOD PILOT 6 GALLON USER MANUAL Pdf Download

View and Download Atwood Pilot 6 Gallon user manual online. Pilot 6 Gallon water heater pdf manual download. Also for: Electronic ignition 10 gallon, Pilot 10 gallon, Electronic ignition 6 ...

Explore our detailed manual craftsman self-propelled lawn mower parts diagram. Learn how to identify and replace parts easily. Discover how to maintain your mower!

[Back to Home](#)