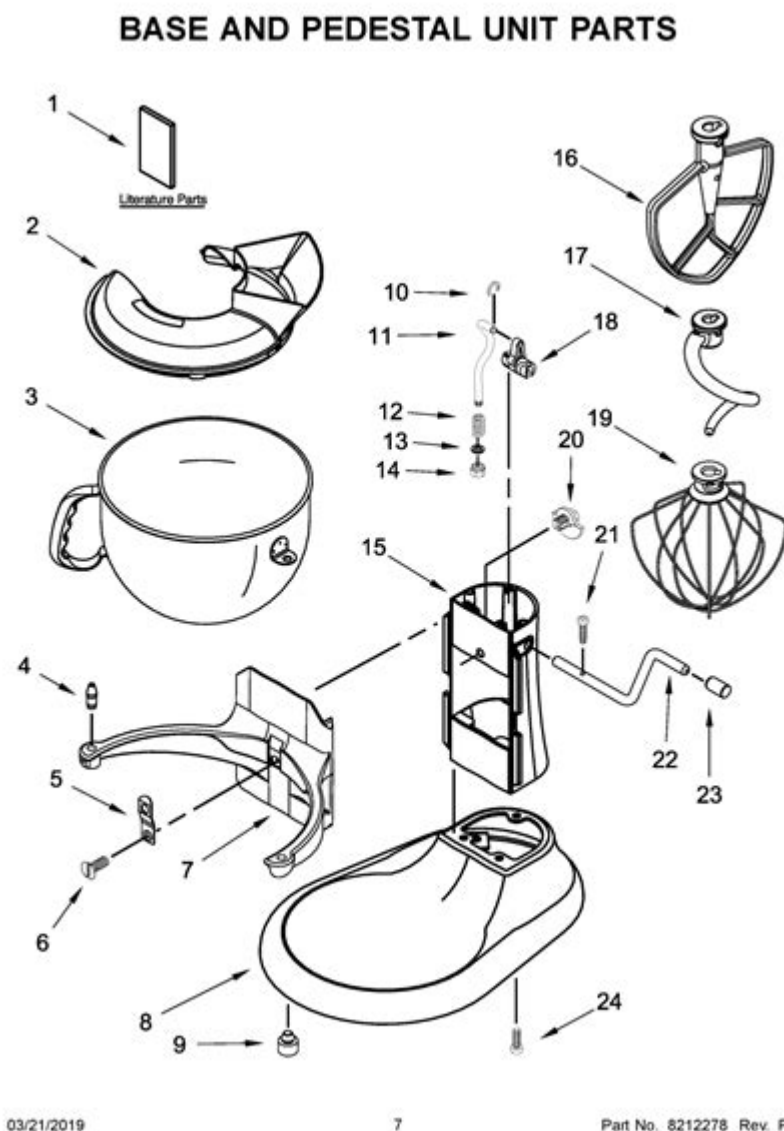


Manual Kitchenaid Mixer Parts Diagram



Manual KitchenAid Mixer Parts Diagram

When it comes to baking and cooking, a KitchenAid mixer is an invaluable tool that can save time and effort in the kitchen. Understanding the different parts of your KitchenAid mixer can help you troubleshoot problems, perform maintenance, and ultimately make better use of this versatile appliance. This article provides a comprehensive overview of the manual KitchenAid mixer parts diagram, detailing each component's function and importance.

Overview of KitchenAid Mixers

KitchenAid mixers have been a staple in kitchens around the world since their introduction in the early 20th century. Known for their durability and performance, these mixers come in various models, each

equipped with unique features. However, all KitchenAid mixers share common components which can be identified in a parts diagram.

Types of KitchenAid Mixers

Before diving into the parts diagram, it's essential to understand the different types of KitchenAid mixers available:

1. **Stand Mixers:** The most common type, equipped with a bowl that remains stationary while the mixing attachment rotates.
2. **Hand Mixers:** Lightweight and portable, these mixers are ideal for smaller mixing tasks.
3. **Commercial Mixers:** Designed for heavy-duty use in restaurants and bakeries, with higher capacity and power.

Each type has its unique parts but shares several components in common.

Key Components of a KitchenAid Mixer

Understanding the various components of a KitchenAid mixer is crucial for effective operation and maintenance. Below, we explore each part, its function, and how it contributes to the overall performance of the mixer.

1. Base Unit

The base unit is the heavy part of the mixer that provides stability during operation. It houses the motor and is built to absorb vibrations.

- **Motor:** The powerhouse of the mixer, responsible for driving the mixing action.
- **Control Panel:** Usually located on the front, this panel features speed settings and other controls.

2. Bowl

The bowl is where all the mixing takes place. KitchenAid mixers generally come with different types of bowls, such as:

- **Stainless Steel Bowl:** Durable and easy to clean, often with a handle for easier pouring.
- **Glass Bowl:** Allows you to see the mixing process; some are microwave-safe.

3. Mixing Attachments

These attachments are crucial for different mixing tasks. Common attachments include:

- Flat Beater: Ideal for mixing cake batters and cookie dough.
- Wire Whip: Perfect for whipping cream and egg whites.
- Dough Hook: Designed for kneading bread dough.

Each attachment has a specific function and is easily interchangeable, allowing for versatility in preparation.

4. Lift Mechanism

In tilt-head models, the lift mechanism allows users to raise or lower the mixing bowl. It consists of:

- Tilt Head: The head tilts back to allow easy access to the bowl.
- Lifting Arm: Engages the tilt mechanism to raise or lower the bowl.

5. Planetary Mixing Action

One of the unique features of KitchenAid mixers is their planetary mixing action. This means that the mixing attachment rotates around the bowl while also spinning on its own axis, ensuring thorough mixing.

6. Power Hub

Located on the front of the mixer, the power hub allows for the attachment of additional KitchenAid accessories, such as:

- Food Grinder
- Pasta Maker
- Vegetable Slicer

This feature expands the capabilities of your mixer beyond just mixing.

Understanding the Parts Diagram

A manual KitchenAid mixer parts diagram provides a visual representation of the components discussed above. Here's how to interpret it:

1. Identifying Parts

Each part of the mixer is labeled with a number or letter in the diagram. Familiarize yourself with these labels to easily locate components when needed.

2. Understanding Relationships

The diagram also illustrates how different parts are connected. For example, the motor connects to the power hub and drives the attachments. Understanding these relationships can help in troubleshooting issues.

3. Maintenance and Repair Guidance

The parts diagram can aid in maintenance tasks, such as replacing worn-out components or cleaning specific areas of the mixer. For instance:

- Replacing the Beater: Knowing how to detach the beater from the power hub simplifies the process.
- Motor Access: If you need to inspect or replace the motor, the diagram will guide you through disassembling the base unit.

Common Issues and Solutions

Even the most reliable appliances can encounter problems. Familiarizing yourself with the parts diagram can help you troubleshoot common issues.

1. Mixer Won't Start

- Check Power Supply: Ensure the mixer is plugged into a working outlet.
- Inspect the Motor: If there's a humming noise but no movement, the motor may need attention.

2. Attachment Not Spinning

- Check the Attachment Connection: Make sure the attachment is properly secured to the power hub.
- Inspect the Lift Mechanism: Ensure the bowl is correctly positioned within the lift mechanism.

3. Overheating

- Allow Cool Down: If the mixer overheats, let it cool down before resuming use.
- Inspect the Motor: Continuous overheating may indicate a motor issue, requiring professional servicing.

Maintenance Tips for Your KitchenAid Mixer

To ensure the longevity of your KitchenAid mixer, regular maintenance is essential. Here are some tips:

1. **Clean After Each Use:** Wipe down the base and bowl after every use. Remove and clean attachments thoroughly.
2. **Check for Wear:** Periodically inspect attachments and the power cord for signs of wear and tear.
3. **Lubricate Moving Parts:** Refer to the user manual for guidance on lubricating the motor and other moving parts.
4. **Store Properly:** When not in use, store your mixer in a dry place to prevent moisture damage.

Conclusion

Understanding the manual KitchenAid mixer parts diagram is vital for any user who wants to maximize the utility of this kitchen appliance. By familiarizing yourself with the various components and their functions, you'll be better equipped to perform maintenance, troubleshoot issues, and enhance your cooking and baking experience. Investing time in learning about your mixer can lead to delicious creations and a more efficient kitchen.

Frequently Asked Questions

What is a manual KitchenAid mixer parts diagram?

A manual KitchenAid mixer parts diagram is a visual representation that illustrates the different components and parts of a KitchenAid mixer, helping users identify and understand how each part functions.

Where can I find a manual KitchenAid mixer parts diagram?

You can find a manual KitchenAid mixer parts diagram on the official KitchenAid website, in the user manual that comes with the mixer, or through third-party appliance repair websites.

Why is it important to have a parts diagram for my KitchenAid mixer?

Having a parts diagram is important for troubleshooting issues, performing maintenance, and ordering replacement parts accurately for your KitchenAid mixer.

How do I read a KitchenAid mixer parts diagram?

To read a KitchenAid mixer parts diagram, familiarize yourself with the labels and numbers associated with each part, which correspond to the parts list provided in the manual.

What common parts can I find in a KitchenAid mixer parts diagram?

Common parts include the motor, mixing bowl, beater attachments, drive assembly, and various

gears and housing components.

Can a parts diagram help me troubleshoot my KitchenAid mixer?

Yes, a parts diagram can help you troubleshoot your KitchenAid mixer by allowing you to identify specific components that may be malfunctioning or need maintenance.

Are parts diagrams the same for all KitchenAid mixers?

No, parts diagrams can vary between different models of KitchenAid mixers, so it's important to refer to the diagram specific to your model.

How can I order replacement parts using a parts diagram?

You can order replacement parts by identifying the part number from the diagram, then searching for it on the KitchenAid website or authorized parts retailers.

Is it safe to repair my KitchenAid mixer using a parts diagram?

Yes, it is generally safe to repair your KitchenAid mixer using a parts diagram, as long as you follow safety guidelines and ensure the mixer is unplugged during the repair process.

Find other PDF article:

<https://soc.up.edu.ph/04-ink/Book?dataid=iID44-2946&title=aerospace-propulsion-systems-thomas-a-ward.pdf>

Manual Kitchenaid Mixer Parts Diagram

ManualsLib - Makes it easy to find manuals online!

Just enter the keywords in the search field and find what you are looking for! Search results include manual name, description, size and number of pages. You can either read manual ...

Brands | ManualsLib

Search through 3.000.000 manuals online & and download pdf manuals.

HONEYWELL HOME PRO SERIES USER MANUAL Pdf Download

View and Download Honeywell Home Pro Series user manual online. Home Pro Series thermostat pdf manual download. Also for: T6 pro.

GRACO 4EVER INSTRUCTION MANUAL Pdf Download | ManualsLib

View and Download Graco 4Ever instruction manual online. All-in-one Car Seat. 4Ever car seat pdf manual download.

LOGITECH K400 PLUS QUICK MANUAL Pdf Download | ManualsLib

View and Download Logitech K400 Plus quick manual online. K400 Plus keyboard pdf manual download.

BLUE YETI OWNER'S MANUAL Pdf Download | ManualsLib

View and Download Blue Yeti owner's manual online. Ultimate USB microphone for professional recording. Yeti microphone pdf manual download.

DELTA MS300 SERIES USER MANUAL Pdf Download

View and Download Delta MS300 Series user manual online. Standard Compact Drive. MS300 Series storage pdf manual download.

GRACO EXTEND2FIT INSTRUCTION MANUAL Pdf Download

View and Download Graco Extend2Fit instruction manual online. 3-in-1 Car Seat. Extend2Fit car seat pdf manual download.

ACORN SUPERGLIDE 130 USER MANUAL Pdf Download

View and Download Acorn Superglide 130 user manual online. Straight Stairlift. Superglide 130 stairlifts pdf manual download.

ATWOOD PILOT 6 GALLON USER MANUAL Pdf Download

View and Download Atwood Pilot 6 Gallon user manual online. Pilot 6 Gallon water heater pdf manual download. Also for: Electronic ignition 10 gallon, Pilot 10 gallon, Electronic ignition 6 ...

ManualsLib - Makes it easy to find manuals online!

Just enter the keywords in the search field and find what you are looking for! Search results include manual name, description, size and number of pages. You can either read manual ...

Brands | ManualsLib

Search through 3.000.000 manuals online & and download pdf manuals.

HONEYWELL HOME PRO SERIES USER MANUAL Pdf Download

View and Download Honeywell Home Pro Series user manual online. Home Pro Series thermostat pdf manual download. Also for: T6 pro.

GRACO 4EVER INSTRUCTION MANUAL Pdf Download | ManualsLib

View and Download Graco 4Ever instruction manual online. All-in-one Car Seat. 4Ever car seat pdf manual download.

LOGITECH K400 PLUS QUICK MANUAL Pdf Download | ManualsLib

View and Download Logitech K400 Plus quick manual online. K400 Plus keyboard pdf manual download.

BLUE YETI OWNER'S MANUAL Pdf Download | ManualsLib

View and Download Blue Yeti owner's manual online. Ultimate USB microphone for professional recording. Yeti microphone pdf manual download.

DELTA MS300 SERIES USER MANUAL Pdf Download

View and Download Delta MS300 Series user manual online. Standard Compact Drive. MS300 Series storage pdf manual download.

GRACO EXTEND2FIT INSTRUCTION MANUAL Pdf Download

View and Download Graco Extend2Fit instruction manual online. 3-in-1 Car Seat. Extend2Fit car seat pdf manual download.

ACORN SUPERGLIDE 130 USER MANUAL Pdf Download

View and Download Acorn Superglide 130 user manual online. Straight Stairlift. Superglide 130 stairlifts pdf manual download.

ATWOOD PILOT 6 GALLON USER MANUAL Pdf Download

View and Download Atwood Pilot 6 Gallon user manual online. Pilot 6 Gallon water heater pdf manual download. Also for: Electronic ignition 10 gallon, Pilot 10 gallon, Electronic ignition 6 ...

Discover the essential manual KitchenAid mixer parts diagram to help you identify and replace components easily. Learn more and keep your mixer running smoothly!

[Back to Home](#)