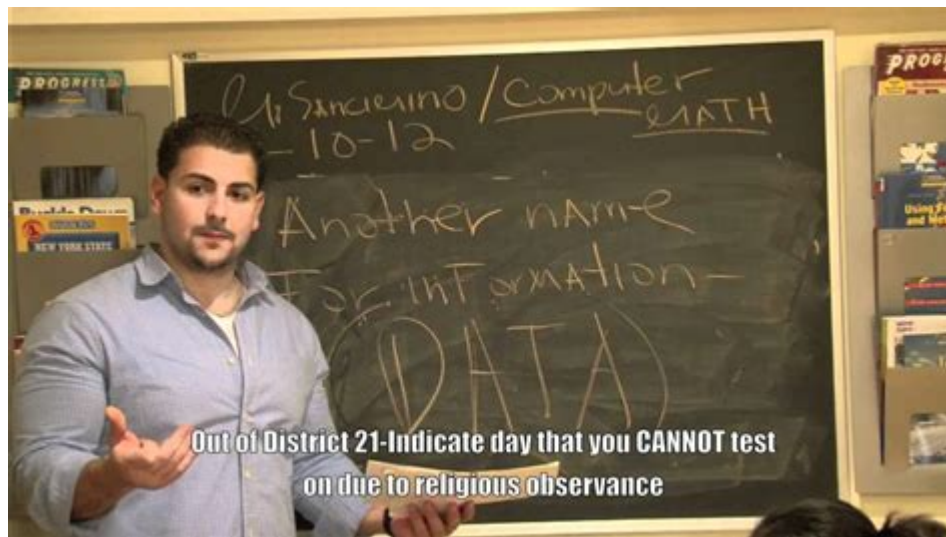


Mark Twain Computer Math Test Sample



Mark Twain Computer Math Test Sample is a fascinating intersection of literature and technology, showcasing how classic literature can be integrated into modern educational assessments. This article delves into the significance of Mark Twain's work, explores the role of computer math tests in education, and provides sample questions that reflect both Twain's literary themes and mathematical concepts.

Understanding Mark Twain's Influence

Mark Twain, born Samuel Langhorne Clemens, is one of America's most celebrated authors. His works, such as *The Adventures of Huckleberry Finn* and *The Adventures of Tom Sawyer*, are not only literary masterpieces but also rich in themes that reflect social issues, morality, and human nature.

The Relevance of Twain's Themes in Education

Twain's observations on society, childhood, and morality can serve as excellent prompts for math problems. Integrating literature with math helps students develop critical thinking skills and encourages them to see connections between different subjects.

- Critical Thinking: Analyzing characters' decisions can lead to complex mathematical reasoning.
- Historical Context: Understanding the socio-economic conditions during Twain's time can provide context for applied math problems.
- Moral Dilemmas: Math problems can include scenarios that challenge students to think about ethics and choices.

The Role of Computer Math Tests

Computer math tests have become an essential tool in education, providing a platform for students to demonstrate their understanding of mathematical concepts through interactive and engaging formats.

Benefits of Computer Math Tests

1. Instant Feedback: Students receive immediate results, helping them identify areas for improvement.
2. Personalized Learning: Tests can adapt to students' skill levels, providing a customized experience.
3. Engagement: Interactive elements can make math more appealing to students, fostering a positive attitude toward the subject matter.

Designing a Mark Twain Computer Math Test

Creating a math test inspired by Mark Twain involves combining literary themes with mathematical concepts. Here are some steps to consider:

- Identify Key Themes: Choose themes from Twain's works that can relate to mathematical concepts, such as friendship, adventure, or moral choices.
- Develop Problems: Create math problems that incorporate these themes, ensuring relevance and engagement.
- Utilize Technology: Use computer programs that allow for various question formats, such as multiple-choice, short answer, and problem-solving tasks.

Sample Questions for the Mark Twain Computer Math Test

Below are some sample questions that reflect both Twain's literary themes and mathematical concepts.

1. Percentage and Proportions

Question: In *The Adventures of Tom Sawyer*, Tom convinces his friends to paint a fence for him. If Tom has 12 friends and he convinces 75% of them to help, how many friends helped him paint the fence?

- A. 9
- B. 8

- C. 10
- D. 7

Answer: A. 9 (75% of 12 = 0.75 12 = 9)

2. Word Problems Involving Ratios

Question: In *The Adventures of Huckleberry Finn*, Huck and Jim travel down the Mississippi River. If their journey takes them down 300 miles and they travel at a speed of 5 miles per hour, how many hours did it take them to reach their destination?

Answer: $\text{Time} = \text{Distance} \div \text{Speed} = 300 \text{ miles} \div 5 \text{ mph} = 60 \text{ hours}$.

3. Arithmetic with Twain's Characters

Question: If Tom Sawyer has 4 marbles and he gives 2 marbles to each of his 3 friends, how many marbles will he have left?

Answer: Tom starts with 4 marbles and gives away 6 (2 marbles \times 3 friends), so he will have -2 marbles left. (This could be a discussion point about the concept of debt in a playful context.)

4. Algebraic Expressions

Question: If Huck Finn's boat can hold 'x' number of people and they decide to take 3 more friends with them, what would be the new capacity of the boat?

Answer: $\text{New capacity} = x + 3$.

5. Geometry in the Context of Twain's Life

Question: Mark Twain's childhood home has a rectangular garden that is 15 feet long and 10 feet wide. What is the area of the garden?

Answer: $\text{Area} = \text{Length} \times \text{Width} = 15 \text{ feet} \times 10 \text{ feet} = 150 \text{ square feet}$.

Integrating Literature and Math Education

Combining literature with mathematics can create a more holistic educational experience. Here are some strategies for effectively integrating these subjects:

Creative Approaches

- Story Problems: Create math problems that tell a story, allowing students to engage with the narrative while solving mathematical challenges.
- Character Analysis: Analyze characters' choices in Twain's stories and use them as the basis for developing logical reasoning and problem-solving skills.
- Group Projects: Encourage collaboration through group projects that require both literary analysis and mathematical calculations.

Assessment Techniques

- Peer Review: Allow students to review each other's work on math problems based on literary themes, fostering collaboration and communication.
- Project-Based Learning: Assign projects where students create their own math problems inspired by Twain's works, presenting them to the class.
- Interactive Quizzes: Use computer programs to create quizzes that combine literary analysis with mathematical reasoning.

Conclusion

The Mark Twain Computer Math Test Sample illustrates the rich possibilities that arise when literature and mathematics converge. By drawing on the timeless themes of Twain's work, educators can create engaging and meaningful learning experiences that not only enhance students' mathematical skills but also deepen their appreciation for literature. This interdisciplinary approach not only aids in the retention of math concepts but also nurtures critical thinking and creativity, essential skills for the modern world. As we continue to evolve in our teaching methodologies, the integration of subjects like literature and math can pave the way for a more connected and comprehensive educational experience.

Frequently Asked Questions

What is the purpose of the Mark Twain computer math test sample?

The Mark Twain computer math test sample is designed to assess the mathematical abilities of students using a digital platform, combining classic literature themes with math problems.

How does the Mark Twain math test incorporate literary themes?

The test incorporates literary themes by embedding questions that relate to characters, plots, or settings from Mark Twain's works, allowing for a creative approach to math problems.

What types of math problems are included in the Mark Twain computer math test?

The test typically includes a variety of math problems such as arithmetic, algebra, geometry, and word problems that reference Mark Twain's stories.

Is the Mark Twain computer math test suitable for all grade levels?

The test is generally designed for middle school to high school students, but it can be adapted for different grade levels depending on the complexity of the questions.

How can teachers integrate the Mark Twain math test into their curriculum?

Teachers can integrate the test by using it as a supplemental tool for math instruction, aligning the questions with literary discussions, or as a fun assessment at the end of a unit.

Are there any specific learning objectives tied to the Mark Twain math test?

Yes, the learning objectives typically include improving mathematical problem-solving skills, enhancing reading comprehension through literary context, and connecting literature with math.

Can students take the Mark Twain computer math test online?

Yes, the test is designed to be taken online, allowing for easy access and immediate feedback on performance.

What skills does the Mark Twain computer math test aim to develop?

The test aims to develop critical thinking, analytical skills, and the ability to apply mathematical concepts in contextual scenarios.

Is there a scoring system for the Mark Twain math test?

Yes, the test usually has a scoring system that assigns points based on the accuracy of answers, with potential adjustments for question difficulty.

Where can educators find resources for the Mark Twain computer math test?

Educators can find resources on educational websites, teacher resource centers, and platforms dedicated to integrating literature and math education.

Find other PDF article:

<https://soc.up.edu.ph/39-point/pdf?docid=FEY76-5118&title=maryland-life-insurance-license-exam-q>

Mark Twain Computer Math Test Sample

Canada's Work & Casual Apparel Store | Mark's

Mark's, Formerly Known As Mark's Work Wearhouse, Is Canada's Top Apparel And Workwear Destination. Shop Men's And Women's Jeans, Shoes, Shirts, Jackets And More.

Women's Clothing - Mark's

Explore the finest selection of stylish casual clothing at Mark's, where exceptional quality meets unbeatable value. Shop Now

Men's Clothing - Mark's

Explore the finest selection of stylish casual clothing at Mark's, where exceptional quality meets unbeatable value. Shop Now

Work Boots & Shoes - Mark's

Explore the finest selection of durable work boots and safety footwear at Mark's, where exceptional quality meets unbeatable value. Shop Now

Workwear - Mark's

Explore the finest selection of durable workwear & scrubs at Mark's, where exceptional quality meets unbeatable value. Shop Now

Careers | Mark's

Don't take it from us. Take it from the folks who bring Mark's to life. We offer purposeful careers that help make passion, flexibility, growth, and development simple.

Shoes - Mark's

Explore the finest selection of stylish casual footwear at Mark's, where exceptional quality meets unbeatable value. Shop Now

Sale | Clearance | Mark's

Discover great deals on men's and women's clothing, footwear, and accessories at Mark's Sale & Clearance section.

Bowmanville Store Hours & Directions | L1C 4V4 | Mark's

Find directions and store hours for Bowmanville, postal code L1C 4V4 | Mark's

Flyer - Mark's

Explore Mark's flyer for the latest deals on clothing, shoes, and accessories.

Canada's Work & Casual Apparel Store | Mark's

Mark's, Formerly Known As Mark's Work Wearhouse, Is Canada's Top Apparel And Workwear Destination. Shop Men's And Women's Jeans, Shoes, Shirts, Jackets And More.

Women's Clothing - Mark's

Explore the finest selection of stylish casual clothing at Mark's, where exceptional quality meets unbeatable value. [Shop Now](#)

Men's Clothing - Mark's

Explore the finest selection of stylish casual clothing at Mark's, where exceptional quality meets unbeatable value. [Shop Now](#)

Work Boots & Shoes - Mark's

Explore the finest selection of durable work boots and safety footwear at Mark's, where exceptional quality meets unbeatable value. [Shop Now](#)

Workwear - Mark's

Explore the finest selection of durable workwear & scrubs at Mark's, where exceptional quality meets unbeatable value. [Shop Now](#)

Careers | Mark's

Don't take it from us. Take it from the folks who bring Mark's to life. We offer purposeful careers that help make passion, flexibility, growth, and development simple.

Shoes - Mark's

Explore the finest selection of stylish casual footwear at Mark's, where exceptional quality meets unbeatable value. [Shop Now](#)

Sale | Clearance | Mark's

Discover great deals on men's and women's clothing, footwear, and accessories at Mark's Sale & Clearance section.

Bowmanville Store Hours & Directions | L1C 4V4 | Mark's

Find directions and store hours for Bowmanville, postal code L1C 4V4 | [Mark's](#)

Flyer - Mark's

Explore Mark's flyer for the latest deals on clothing, shoes, and accessories.

Explore our comprehensive Mark Twain computer math test sample. Enhance your skills and confidence in math assessments. [Learn more for tips and insights!](#)

[Back to Home](#)