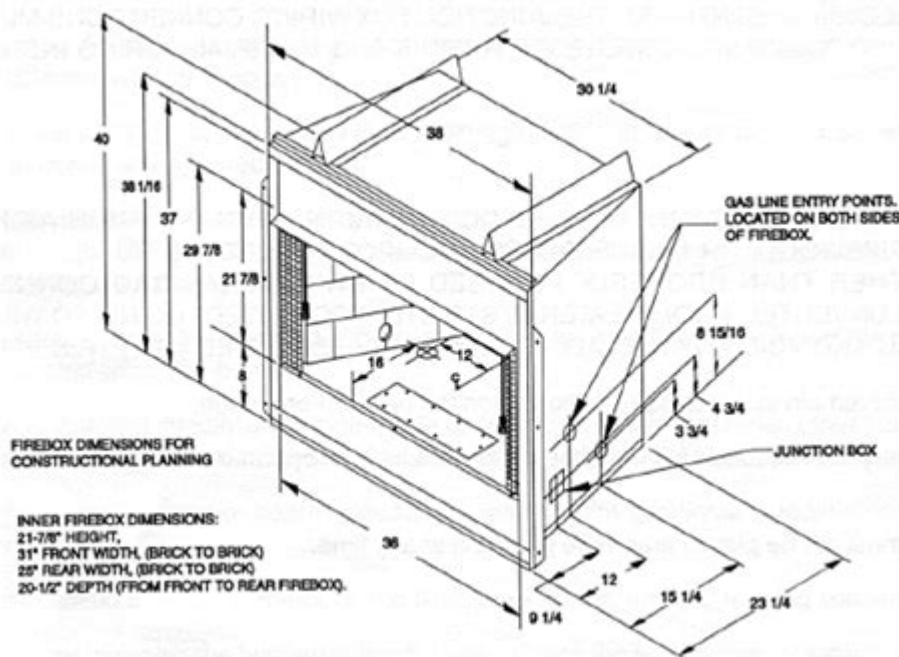


# Martin Industries Fireplace Manual



**Martin Industries fireplace manual** is an essential resource for homeowners and maintenance professionals alike. This comprehensive guide is designed to help users understand the various aspects of Martin Industries fireplaces, including installation, operation, maintenance, and troubleshooting. Whether you're a new owner or looking to refresh your knowledge, this article will provide valuable insights into maximizing your fireplace's efficiency and longevity.

## Understanding Martin Industries Fireplaces

Martin Industries is renowned for its high-quality fireplaces that combine aesthetics with functionality. Their fireplaces come in various styles, including gas, wood-burning, and electric models. Each type has its unique features and requirements, making it crucial to refer to the appropriate manual.

## Types of Martin Industries Fireplaces

1. **Gas Fireplaces:** These fireplaces offer convenience and instant warmth. They require a gas line and can be vented or ventless, depending on the model.
2. **Wood-Burning Fireplaces:** For traditionalists, these fireplaces provide a classic ambiance with the crackling sound of wood. They require a chimney and proper ventilation.
3. **Electric Fireplaces:** Ideal for easy installation, electric fireplaces can be plugged into a standard outlet and come in various designs, including wall-mounted and standalone units.

# Installation Guidelines

Proper installation of your Martin Industries fireplace is critical for safety and efficiency. Always refer to the specific fireplace manual for detailed instructions, but here are some general installation tips:

## Preparation Steps

1. Read the Manual: Before starting, thoroughly read the installation manual to understand all requirements and components.
2. Gather Tools and Materials: Ensure you have all necessary tools such as screwdrivers, wrenches, and any specific components required for your model.
3. Choose the Right Location: Select a location that meets clearance requirements and is conducive to proper ventilation.

## Installation Process

1. Assemble the Fireplace: Follow the step-by-step instructions for assembling your unit, ensuring all parts are securely fitted.
2. Ventilation Setup: For gas and wood-burning models, ensure proper venting to the outside to prevent carbon monoxide buildup.
3. Connect Utilities: For gas fireplaces, connect the gas line according to local codes. For electric models, plug into a dedicated outlet.
4. Test for Leaks: For gas installations, conduct a leak test using soapy water to identify any leaks in connections.

## Operating Your Martin Industries Fireplace

Understanding how to operate your fireplace safely and effectively is crucial for optimal performance. Each model may have specific controls, but here are some general operating tips:

## Starting the Fireplace

1. Gas Fireplaces: Turn on the gas supply, and follow the ignition instructions in the manual. Use the pilot light feature if applicable.
2. Wood-Burning Fireplaces: Use dry, seasoned wood for optimal burning. Start with kindling and gradually add larger logs.
3. Electric Fireplaces: Simply plug in and turn on using the provided remote or control panel.

## Safety Precautions

- Always ensure the area around the fireplace is clear of flammable materials.
- Use a fireplace screen to prevent sparks from escaping.
- Never leave the fireplace unattended when in use.

## Maintenance Tips

Regular maintenance of your Martin Industries fireplace ensures safety and efficiency. Here are some essential maintenance tasks:

### Monthly Checks

1. Inspect the Ventilation System: Ensure that vents are clear of obstructions.
2. Clean the Glass: If applicable, clean the glass doors with appropriate cleaner to maintain visibility and aesthetics.

### Seasonal Maintenance

1. Chimney Cleaning: For wood-burning models, schedule a professional chimney cleaning at least once a year to prevent creosote buildup.
2. Gas Line Inspection: Have a professional inspect the gas line annually to ensure safe operation.

### Annual Inspections

1. Professional Servicing: Consider hiring a qualified technician to perform a thorough inspection and maintenance of your fireplace.
2. Check for Wear and Tear: Examine all components, including ignition systems, blowers, and seals, for any signs of wear.

## Troubleshooting Common Issues

Even with proper maintenance, you may encounter issues with your fireplace. Here are some common problems and their solutions:

### Gas Fireplace Issues

- Problem: Fireplace won't ignite.
- Solution: Check the gas supply and ensure the pilot light is lit. Refer to the manual for ignition troubleshooting.
- Problem: Unpleasant odors.
- Solution: Ensure proper ventilation and check for any gas leaks.

## Wood-Burning Fireplace Issues

- Problem: Poor draft.
- Solution: Check for blockages in the chimney or flue and ensure the damper is open.
- Problem: Excessive smoke.
- Solution: Use dry wood and check for proper ventilation.

## Electric Fireplace Issues

- Problem: Fireplace not turning on.
- Solution: Check the power supply and ensure the unit is plugged in properly.
- Problem: Inconsistent heat output.
- Solution: Clean the heating elements and ensure the unit is not obstructed.

## Conclusion

The **Martin Industries fireplace manual** is an invaluable resource that provides guidance for installation, operation, maintenance, and troubleshooting. By familiarizing yourself with your specific model and following the outlined procedures, you can enjoy the warmth and ambiance of your fireplace for years to come. Remember that regular maintenance and prompt attention to any issues will enhance the safety and efficiency of your fireplace, ensuring it remains a cherished feature in your home.

## Frequently Asked Questions

### Where can I find the Martin Industries fireplace manual for my model?

You can find the Martin Industries fireplace manual on their official website under the 'Support' or 'Downloads' section, or by contacting their customer service for assistance.

## **What should I do if I lost my Martin Industries fireplace manual?**

If you've lost your manual, you can download a PDF version from the Martin Industries website or request a physical copy by contacting their customer service.

## **Are there any safety tips included in the Martin Industries fireplace manual?**

Yes, the Martin Industries fireplace manual includes essential safety tips such as ensuring proper ventilation, regular maintenance checks, and guidelines on how to safely operate the fireplace.

## **Does the Martin Industries fireplace manual provide installation instructions?**

Yes, the manual includes detailed installation instructions specific to each model, ensuring proper setup for safe and efficient use of your fireplace.

## **How can I troubleshoot issues with my Martin Industries fireplace using the manual?**

The manual contains a troubleshooting section that outlines common issues and their solutions, helping you to diagnose and resolve problems effectively.

## **Is there a customer support contact in the Martin Industries fireplace manual?**

Yes, the manual typically includes contact information for customer support, including phone numbers and email addresses for any additional assistance you may need.

Find other PDF article:

<https://soc.up.edu.ph/33-gist/pdf?trackid=Ceu93-2811&title=introduction-to-cosmology-ryden-solutions.pdf>

## **Martin Industries Fireplace Manual**

The Top Regular Savers Discussion Thread - MoneySavingExpert ...

Dec 28, 2024 · This thread is intended to complement Martin Lewis' article which you can read here: Regular Savings Accounts. Structure of this thread The first few posts shall contain a continually updated list of the top regular savers currently on offer and shall be regularly edited by myself to ensure it remains up to date.

**Warning on scam "Martin Lewis" ads on the Independent website**

Feb 27, 2024 · Just to flag to all, although no doubt obvious to pretty much anyone with a brain - that there are scam ads running titled "Rumors about Martin Lewis have been confirmed" - seen today on an Independent newspaper article accessed via msn.com on Microsoft Edge Directs to a dedicated website "informationaboutmartin.org" which is a whole lot of fake rubbish about a ...

## How can I tell if Martin Lewis messages on Facebook are genuine?

Sep 9, 2024 · I am now 80 and started getting Martins emails using an older email address almost since he started.

□□□□ **Coldplay** □□ **Chris Martin**□ - □□

Martin 24 Dua Lipa  
Martin

## Martin Lewis: A warning for anyone who's booked their holiday ...

Mar 7, 2025 · Read the full story: Martin Lewis: A warning for anyone who's booked their holiday this year If you haven't already, join the forum to reply.

## Martin's advice on buying back NI years - MoneySavingExpert Forum

Oct 16, 2024 · Is it wise to encourage people to spend over £825 on boosting state pensions when the government may well target the state pension?

Pensions, annuities & retirement planning - MoneySavingExpert ...

Categories - For help with everything to do with pensions and retirement.

## Martin Lewis: Going abroad soon? Two passport checks to stop ...

May 22, 2025 · "My daughter wasn't allowed to board the plane even though she had seven months left on her passport." MoneySavingExpert.com founder Martin Lewis explains two key checks to ensure this doesn't happen to you (while it differs per country, these'll generally keep you safe), in the latest episode of ITV's The Martin Lewis Money Show Live.

**Anyone buying gilts right now? — MoneySavingExpert Forum**

Jan 9, 2025 · Without wanting to get political so keeping the conversation general about their future prospects rather than any particular party is anyone else seeing medium to long duration gilts as a potential opportunity for overweighting within a portfolio now yields are at 27 year highs?

\_\_\_\_\_ - \_\_\_\_\_

```

##### (first name)#### (last name). #####first name##last
name##### Sheldon Cooper)###Cooper###Sheldon. #####
#####
##### ...

```

**The Top Regular Savers Discussion Thread - MoneySavingExpert ...**

Dec 28, 2024 · This thread is intended to complement Martin Lewis' article which you can read here: [Regular Savings Accounts](#). Structure of this thread The first few posts shall contain a ...

## Warning on scam "Martin Lewis" ads on the Independent website

Feb 27, 2024 · Just to flag to all, although no doubt obvious to pretty much anyone with a brain - that there are scam ads running titled "Rumors about Martin Lewis have been confirmed" - seen ...

### How can I tell if Martin Lewis messages on Facebook are genuine?

Sep 9, 2024 · I am now 80 and started getting Martins emails using an older email address almost since he started.

Martin 24 Dua Lipa ...

Mar 7, 2025 · Read the full story: Martin Lewis: A warning for anyone who's booked their holiday this year If you haven't already, join the forum to reply.

Oct 16, 2024 · Is it wise to encourage people to spend over £825 on boosting state pensions when the government may well target the state pension?

Categories - For help with everything to do with pensions and retirement.

May 22, 2025 · "My daughter wasn't allowed to board the plane even though she had seven months left on her passport." MoneySavingExpert.com founder Martin Lewis explains two key checks to ...

Jan 9, 2025 · Without wanting to get political so keeping the conversation general about their future prospects rather than any particular party is anyone else seeing medium to long duration gilts as ...

```

#####
##### (first name)###,##### (last name). #####first name##last
name##### ...

```

[Back to Home](#)