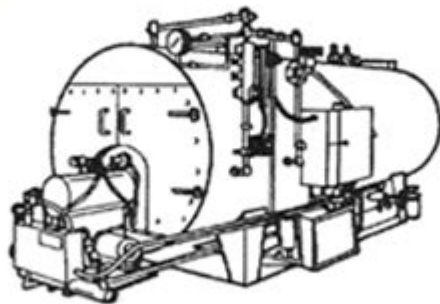


Manual Kewanee 350 Hp Boiler



CLASSIC III BOILER MANUAL

Manual Kewanee 350 HP Boiler

The Kewanee 350 HP boiler is a robust and reliable piece of machinery primarily used in industrial settings for producing steam or hot water. Known for its durability and efficiency, this boiler has been a popular choice among manufacturers, hospitals, and commercial facilities for decades. In this article, we will explore the features, operation, maintenance, and advantages of the Manual Kewanee 350 HP boiler, ensuring you have a comprehensive understanding of this essential equipment.

Overview of the Kewanee 350 HP Boiler

The Kewanee 350 HP boiler is a fire-tube boiler that operates using natural gas or oil as its primary fuel source. It is designed to generate steam at high pressures, making it suitable for a variety of applications including heating, power generation, and industrial processes. The "HP" in the designation stands for horsepower, indicating the boiler's capacity to produce steam.

Specifications

Understanding the specifications of the Kewanee 350 HP boiler is crucial for evaluating its performance. Here are some key specifications:

- Steam Capacity: Approximately 12,000 to 14,000 pounds of steam per hour.
- Operating Pressure: Typically ranges from 15 psi to 250 psi, depending on

the model and configuration.

- Fuel Type: Can be configured to burn natural gas, propane, or fuel oil.
- Efficiency: Generally has an efficiency rating of around 80% to 85%.
- Dimensions: Varies, but generally around 12 feet in length and 5 feet in width.
- Weight: Approximately 25,000 to 30,000 pounds.

Features of the Kewanee 350 HP Boiler

The Kewanee 350 HP boiler is equipped with several features that enhance its performance and usability:

Construction

- Fire-Tube Design: This design allows hot gases to pass through tubes, which are surrounded by water. This maximizes heat transfer and improves efficiency.
- Heavy-Duty Frame: Built to withstand high pressures and temperatures, ensuring longevity and reliability.
- Insulation: High-grade insulation minimizes heat loss, improving overall efficiency.

Control Systems

- Manual Operation: Designed for manual control, allowing operators to monitor and adjust settings as needed.
- Safety Features: Equipped with safety valves and controls to prevent overpressure and ensure safe operation.
- Feedwater Control: Automatic feedwater systems can be integrated, ensuring the correct water level is maintained.

Operation of the Kewanee 350 HP Boiler

Understanding how to operate the Kewanee 350 HP boiler is essential for maximizing its efficiency and lifespan.

Start-Up Procedure

1. Initial Inspection: Check for any leaks, corrosion, or damage to the boiler and its components.
2. Fuel Supply Check: Ensure the fuel supply is connected and in good

condition.

3. Water Level: Verify that the water level is within the acceptable range.
4. Power Supply: Ensure the electrical supply is connected and functioning.
5. Ignition: Follow the manufacturer's ignition procedure, typically involving the lighting of the burners.

Operating Guidelines

- Monitor the pressure gauge regularly to ensure it remains within the desired operating range.
- Check the water level frequently, adjusting as necessary to maintain optimal performance.
- Observe the flame characteristics for any signs of instability or inefficiency.

Maintenance of the Kewanee 350 HP Boiler

Proper maintenance is crucial for the longevity and efficiency of the Kewanee 350 HP boiler. Regular maintenance tasks include:

Daily Maintenance

- Visual Inspections: Look for any signs of leaks or unusual wear.
- Blowdown: Perform a blowdown to remove sediment from the boiler water.
- Check Safety Valves: Ensure that safety valves are functioning correctly.

Weekly Maintenance

- Water Quality Testing: Test the water for pH and hardness levels to prevent scaling and corrosion.
- Inspect Burners: Clean and inspect the burners for proper operation.

Monthly Maintenance

- Check Insulation: Inspect insulation for damage or wear.
- Clean Heat Exchanger: Remove any buildup from the heat exchanger to maintain efficiency.

Annual Maintenance

- Full Inspection: Conduct a thorough inspection of all components, including the combustion chamber and flues.
- Professional Service: It is advisable to have a licensed technician perform a detailed inspection and servicing.

Advantages of the Kewanee 350 HP Boiler

The Kewanee 350 HP boiler offers numerous advantages that make it a popular choice for industrial applications:

- High Efficiency: Its design allows for efficient heat transfer, reducing fuel consumption and operational costs.
- Durability: Built with heavy-duty materials, it can withstand harsh operating conditions.
- Flexibility: Can be adapted to burn different types of fuels, providing operational flexibility.
- Manual Control: Allows for hands-on operation, giving operators the ability to adjust settings as needed.
- Easy Maintenance: Designed with accessibility in mind, making routine maintenance tasks easier.

Considerations When Using the Kewanee 350 HP Boiler

While the Kewanee 350 HP boiler has many benefits, there are also considerations to keep in mind:

- Training Requirements: Operators must be trained to ensure safe and efficient operation.
- Space Requirements: Requires adequate space for installation and maintenance access.
- Regulatory Compliance: Must adhere to local and federal regulations concerning emissions and safety.

Conclusion

The Manual Kewanee 350 HP boiler is a powerful and efficient solution for industrial steam and hot water needs. Its robust design, coupled with high efficiency, makes it an ideal choice for a wide range of applications. By understanding its operation, maintenance, and advantages, users can ensure they maximize the potential of this essential piece of equipment. For

industries that rely on steam generation, investing in a Kewanee 350 HP boiler can lead to significant operational benefits and long-term reliability.

Frequently Asked Questions

What is the primary function of the Kewanee 350 HP boiler?

The primary function of the Kewanee 350 HP boiler is to generate steam or hot water for industrial heating applications, providing energy for processes such as manufacturing and heating systems.

What are the key maintenance practices for a Kewanee 350 HP boiler?

Key maintenance practices include regular inspections, cleaning of the boiler tubes, checking water quality, monitoring pressure levels, and ensuring safety valves are functioning properly.

How do you determine the proper water level in a Kewanee 350 HP boiler?

The proper water level can be determined by monitoring the sight glass and ensuring it stays within the recommended operating range, typically visible on the boiler's gauge.

What type of fuel can the Kewanee 350 HP boiler use?

The Kewanee 350 HP boiler can operate on various fuels, including natural gas, propane, oil, or even biomass, depending on the specific model and configuration.

What safety features are included in the Kewanee 350 HP boiler?

Safety features typically include pressure relief valves, low water cut-off devices, automatic shut-off systems, and thermal safety controls to prevent overheating.

How can efficiency be improved in a Kewanee 350 HP boiler?

Efficiency can be improved by regularly tuning the burner, maintaining optimal water chemistry, insulating steam lines, and performing frequent maintenance checks to ensure all components are functioning correctly.

What is the average lifespan of a Kewanee 350 HP boiler?

The average lifespan of a Kewanee 350 HP boiler can range from 20 to 30 years, depending on usage, maintenance, and operating conditions.

Find other PDF article:

<https://soc.up.edu.ph/24-mark/files?docid=rkE96-4358&title=fundamental-niche-definition-biology.pdf>

[Manual Kewanee 350 Hp Boiler](#)

[ManualsLib - Makes it easy to find manuals online!](#)

Just enter the keywords in the search field and find what you are looking for! Search results include manual name, description, size and number of pages. You can either read manual ...

Brands | ManualsLib

Search through 3.000.000 manuals online & and download pdf manuals.

HONEYWELL HOME PRO SERIES USER MANUAL Pdf Download

View and Download Honeywell Home Pro Series user manual online. Home Pro Series thermostat pdf manual download. Also for: T6 pro.

GRACO 4EVER INSTRUCTION MANUAL Pdf Download

View and Download Graco 4Ever instruction manual online. All-in-one Car Seat. 4Ever car seat pdf manual download.

[LOGITECH K400 PLUS QUICK MANUAL Pdf Download](#)

View and Download Logitech K400 Plus quick manual online. K400 Plus keyboard pdf manual download.

[BLUE YETI OWNER'S MANUAL Pdf Download | ManualsLib](#)

View and Download Blue Yeti owner's manual online. Ultimate USB microphone for professional recording. Yeti microphone pdf manual download.

DELTA MS300 SERIES USER MANUAL Pdf Download

View and Download Delta MS300 Series user manual online. Standard Compact Drive. MS300 Series storage pdf manual download.

GRACO EXTEND2FIT INSTRUCTION MANUAL Pdf Download

View and Download Graco Extend2Fit instruction manual online. 3-in-1 Car Seat. Extend2Fit car seat pdf manual download.

ACORN SUPERGLIDE 130 USER MANUAL Pdf Download

View and Download Acorn Superglide 130 user manual online. Straight Stairlift. Superglide 130

stairlifts pdf manual download.

ATWOOD PILOT 6 GALLON USER MANUAL Pdf Download

View and Download Atwood Pilot 6 Gallon user manual online. Pilot 6 Gallon water heater pdf manual download. Also for: Electronic ignition 10 gallon, Pilot 10 gallon, Electronic ignition 6 gallon, Ch6-4e, Gch6-6e, Gch6-7e, Gc6a-7e, Gh6-6e, ...

ManualsLib - Makes it easy to find manuals online!

Just enter the keywords in the search field and find what you are looking for! Search results include manual name, description, size and number of pages. You can either read manual ...

Brands | ManualsLib

Search through 3.000.000 manuals online & and download pdf manuals.

HONEYWELL HOME PRO SERIES USER MANUAL Pdf Download

View and Download Honeywell Home Pro Series user manual online. Home Pro Series thermostat pdf manual download. Also for: T6 pro.

GRACO 4EVER INSTRUCTION MANUAL Pdf Download | ManualsLib

View and Download Graco 4Ever instruction manual online. All-in-one Car Seat. 4Ever car seat pdf manual download.

LOGITECH K400 PLUS QUICK MANUAL Pdf Download | ManualsLib

View and Download Logitech K400 Plus quick manual online. K400 Plus keyboard pdf manual download.

BLUE YETI OWNER'S MANUAL Pdf Download | ManualsLib

View and Download Blue Yeti owner's manual online. Ultimate USB microphone for professional recording. Yeti microphone pdf manual download.

DELTA MS300 SERIES USER MANUAL Pdf Download

View and Download Delta MS300 Series user manual online. Standard Compact Drive. MS300 Series storage pdf manual download.

GRACO EXTEND2FIT INSTRUCTION MANUAL Pdf Download

View and Download Graco Extend2Fit instruction manual online. 3-in-1 Car Seat. Extend2Fit car seat pdf manual download.

ACORN SUPERGLIDE 130 USER MANUAL Pdf Download

View and Download Acorn Superglide 130 user manual online. Straight Stairlift. Superglide 130 stairlifts pdf manual download.

ATWOOD PILOT 6 GALLON USER MANUAL Pdf Download

View and Download Atwood Pilot 6 Gallon user manual online. Pilot 6 Gallon water heater pdf manual download. Also for: Electronic ignition 10 gallon, Pilot 10 gallon, Electronic ignition 6 gallon, Ch6-4e, Gch6-6e, Gch6-7e, Gc6a-7e, Gh6-6e, ...

Discover how to efficiently operate and maintain your Manual Kewanee 350 HP Boiler. Get essential tips

[Back to Home](#)