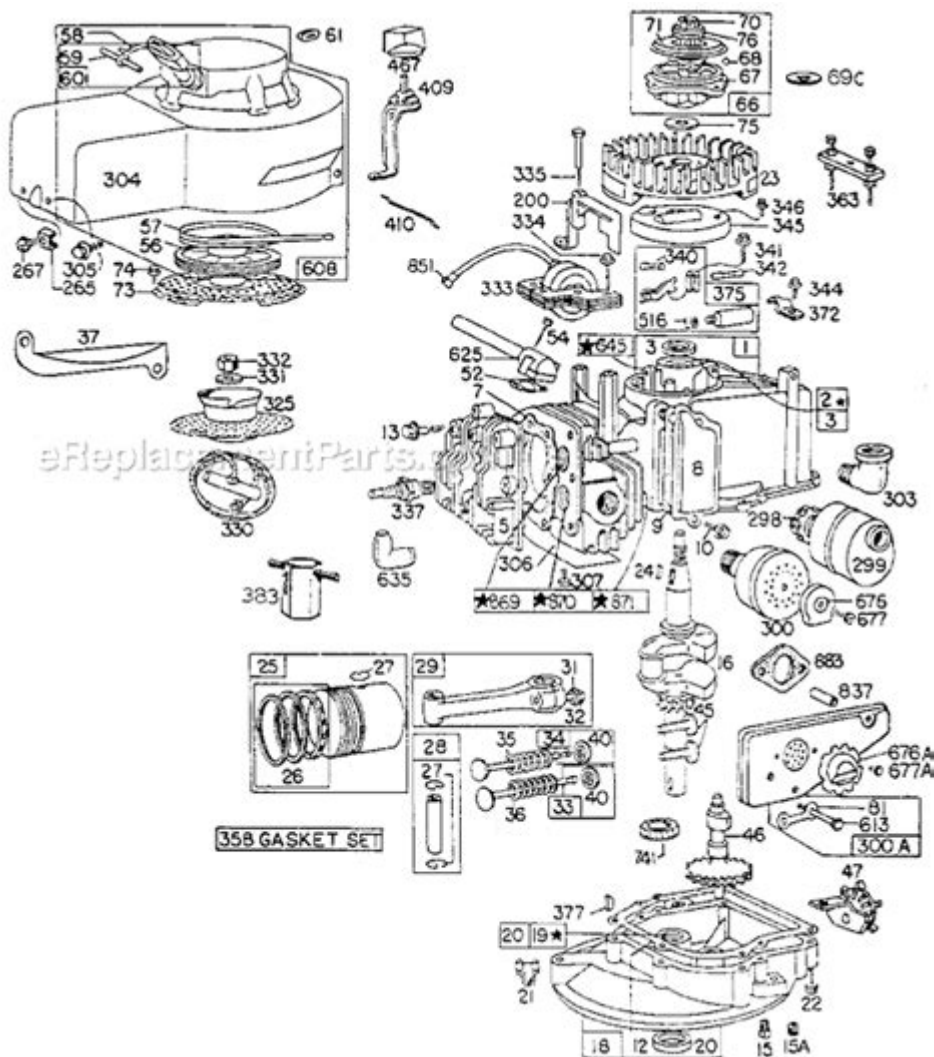


Manual Briggs And Stratton 675 Series Parts Diagram



Manual Briggs and Stratton 675 Series Parts Diagram is an essential resource for anyone looking to maintain or repair their small engine equipment. The Briggs and Stratton 675 Series engines are popular for their reliability and efficiency, commonly found in lawn mowers, pressure washers, and other outdoor power equipment. Understanding the parts diagram can help you identify components, troubleshoot issues, and perform maintenance tasks effectively. In this article, we will explore the components of the Briggs and Stratton 675 Series, how to interpret the parts diagram, and tips for maintaining your engine.

Overview of the Briggs and Stratton 675 Series

Engine

The Briggs and Stratton 675 Series engine is a four-stroke, air-cooled engine designed for various outdoor applications. Known for its durability and performance, this engine is equipped with features that enhance its usability, including:

- Overhead valve (OHV) technology for improved fuel efficiency
- Easy-start system for hassle-free operation
- Low oil shutdown to protect the engine from damage

These features make the 675 Series a preferred choice for homeowners and professionals alike. Knowing the parts and their functions can significantly affect the engine's overall performance and longevity.

Understanding the Parts Diagram

A parts diagram is a visual representation of the components in an engine. It provides detailed information about each part, including its name, location, and how it fits into the overall assembly.

Importance of the Parts Diagram

The parts diagram is crucial for several reasons:

1. **Troubleshooting:** Identifying faulty components becomes easier when you can see how each part interacts with the others.
2. **Ordering Replacement Parts:** When you need to replace a part, the diagram helps you locate the correct part number.
3. **Assembly and Disassembly:** For those who prefer DIY repairs, the diagram serves as a guide to reassemble the engine correctly.

Key Components of the Briggs and Stratton 675

Series Engine

Understanding the key components of the engine will help you navigate the parts diagram more effectively. Here are some of the most important parts:

1. Engine Block

The engine block is the main structure of the engine, housing the cylinders and providing the necessary support for other components.

2. Cylinder Head

The cylinder head sits on top of the engine block and contains the intake and exhaust valves, spark plug, and combustion chamber.

3. Crankshaft

The crankshaft converts the linear motion of the pistons into rotational motion, which drives the equipment.

4. Piston and Connecting Rod

The piston moves up and down within the cylinder, while the connecting rod connects the piston to the crankshaft.

5. Carburetor

The carburetor mixes air and fuel in the correct ratio for efficient combustion.

6. Fuel Tank

The fuel tank stores gasoline, which is delivered to the carburetor for combustion.

7. Ignition System

The ignition system includes components like the spark plug and ignition coil, which create the spark needed to ignite the fuel-air mixture.

How to Use the Parts Diagram for Maintenance

Using the parts diagram effectively can streamline your maintenance tasks. Follow these steps:

Step 1: Identify the Components

Start by familiarizing yourself with the parts diagram. Take note of the names and locations of each component.

Step 2: Perform Regular Inspections

Regularly check for signs of wear and tear. Use the parts diagram to locate the components that need inspection, such as the air filter and spark plug.

Step 3: Replace Worn Parts

When replacing parts, refer to the diagram for the correct part numbers and installation positions. This ensures that you order the right parts and install them correctly.

Step 4: Document Your Repairs

Keep a log of any repairs and replacements you perform. This documentation can be helpful for future troubleshooting and maintenance.

Common Issues and Troubleshooting Tips

Even the most reliable engines can experience issues. Here are some common problems with the Briggs and Stratton 675 Series and how to address them:

1. Engine Won't Start

- Check the Fuel: Ensure that there is enough fuel in the tank and that it is not stale.
- Inspect the Spark Plug: Look for signs of damage or wear. A faulty spark plug can prevent the engine from starting.
- Review the Battery (if applicable): If your engine uses an electric start, check the battery charge.

2. Poor Engine Performance

- **Examine the Air Filter:** A clogged air filter can restrict airflow, leading to poor performance. Clean or replace it as necessary.
- **Inspect the Carburetor:** Ensure that the carburetor is clean and functioning correctly. A dirty carburetor can affect fuel delivery.

3. Excessive Smoke

- **Check Oil Levels:** Overfilled oil can cause excessive smoke. Ensure that the oil level is within the recommended range.
- **Inspect the Piston and Rings:** Worn piston rings can lead to excessive oil consumption and smoke. If needed, replace them.

Where to Find the Parts Diagram

The parts diagram for the Briggs and Stratton 675 Series can typically be found in several locations:

- **Briggs and Stratton Official Website:** The manufacturer's website often has downloadable manuals and parts diagrams for various engine models.
- **Online Retailers:** Websites that sell small engine parts commonly provide parts diagrams along with the parts they sell.
- **Local Repair Shops:** Many local repair shops will have access to parts diagrams and may provide printed copies for customers.

Conclusion

The **manual Briggs and Stratton 675 Series parts diagram** is an invaluable tool for anyone involved in the maintenance or repair of these engines. By understanding the components and how to navigate the diagram, you can ensure your engine operates smoothly and efficiently. Regular inspections, proper maintenance, and timely repairs can extend the life of your Briggs and Stratton engine, allowing you to enjoy its performance for years to come. For best results, don't hesitate to consult the parts diagram whenever you encounter an issue or need to perform maintenance tasks.

Frequently Asked Questions

What is the purpose of the Briggs and Stratton 675 series parts diagram?

The parts diagram serves as a visual reference to identify and locate various components of the Briggs and Stratton 675 series engine, making it easier for users to find replacement parts and understand engine assembly.

Where can I find the manual for the Briggs and Stratton 675 series?

The manual can typically be found on the official Briggs and Stratton website, or through authorized dealers and repair shops. Many manuals are also available for download in PDF format.

What are the common parts depicted in the Briggs and Stratton 675 series parts diagram?

Common parts include the air filter, spark plug, carburetor, fuel tank, and ignition coil. The diagram helps users identify these components for maintenance and repair.

How can I use the parts diagram to troubleshoot my Briggs and Stratton 675 series engine?

By comparing the parts diagram with the actual engine, users can identify missing or damaged components, helping to pinpoint issues and streamline the troubleshooting process.

Is the parts diagram the same for all Briggs and Stratton 675 series engines?

No, while the general layout may be similar, there can be variations in the parts diagram based on the specific model and configuration of the engine. It's important to refer to the diagram that corresponds to your exact model.

Can I order replacement parts directly from the parts diagram?

Yes, most parts diagrams include part numbers that can be used to order replacement parts from Briggs and Stratton authorized dealers or online retailers.

What should I do if a part is not listed in the

Briggs and Stratton 675 series parts diagram?

If a part is missing from the diagram, consult the engine's manual for additional information or contact Briggs and Stratton customer support for assistance in identifying and sourcing the part.

Are there any online resources for viewing the Briggs and Stratton 675 series parts diagram?

Yes, many websites, including the Briggs and Stratton official site and third-party repair sites, offer online access to parts diagrams, often with interactive features for easier navigation.

Find other PDF article:

<https://soc.up.edu.ph/40-trend/pdf?trackid=kut90-1854&title=mechanical-engineering-formula.pdf>

Manual Briggs And Stratton 675 Series Parts Diagram

ManualsLib - Makes it easy to find manuals online!

Just enter the keywords in the search field and find what you are looking for! Search results include manual name, description, size and number of pages. You can either read manual ...

Brands | ManualsLib

Search through 3.000.000 manuals online & and download pdf manuals.

HONEYWELL HOME PRO SERIES USER MANUAL Pdf Download

View and Download Honeywell Home Pro Series user manual online. Home Pro Series thermostat pdf manual download. Also for: T6 pro.

GRACO 4EVER INSTRUCTION MANUAL Pdf Download | ManualsLib

View and Download Graco 4Ever instruction manual online. All-in-one Car Seat. 4Ever car seat pdf manual download.

LOGITECH K400 PLUS QUICK MANUAL Pdf Download | ManualsLib

View and Download Logitech K400 Plus quick manual online. K400 Plus keyboard pdf manual download.

BLUE YETI OWNER'S MANUAL Pdf Download | ManualsLib

View and Download Blue Yeti owner's manual online. Ultimate USB microphone for professional recording. Yeti microphone pdf manual download.

DELTA MS300 SERIES USER MANUAL Pdf Download

View and Download Delta MS300 Series user manual online. Standard Compact Drive. MS300 Series storage pdf manual download.

GRACO EXTEND2FIT INSTRUCTION MANUAL Pdf Download

View and Download Graco Extend2Fit instruction manual online. 3-in-1 Car Seat. Extend2Fit car seat pdf manual download.

ACORN SUPERGLIDE 130 USER MANUAL Pdf Download

View and Download Acorn Superglide 130 user manual online. Straight Stairlift. Superglide 130 stairlifts pdf manual download.

ATWOOD PILOT 6 GALLON USER MANUAL Pdf Download

View and Download Atwood Pilot 6 Gallon user manual online. Pilot 6 Gallon water heater pdf manual download. Also for: Electronic ignition 10 gallon, Pilot 10 gallon, Electronic ignition 6 ...

ManualsLib - Makes it easy to find manuals online!

Just enter the keywords in the search field and find what you are looking for! Search results include manual name, description, size and number of pages. You can either read manual ...

Brands | ManualsLib

Search through 3.000.000 manuals online & and download pdf manuals.

HONEYWELL HOME PRO SERIES USER MANUAL Pdf Download

View and Download Honeywell Home Pro Series user manual online. Home Pro Series thermostat pdf manual download. Also for: T6 pro.

GRACO 4EVER INSTRUCTION MANUAL Pdf Download | ManualsLib

View and Download Graco 4Ever instruction manual online. All-in-one Car Seat. 4Ever car seat pdf manual download.

LOGITECH K400 PLUS QUICK MANUAL Pdf Download | ManualsLib

View and Download Logitech K400 Plus quick manual online. K400 Plus keyboard pdf manual download.

BLUE YETI OWNER'S MANUAL Pdf Download | ManualsLib

View and Download Blue Yeti owner's manual online. Ultimate USB microphone for professional recording. Yeti microphone pdf manual download.

DELTA MS300 SERIES USER MANUAL Pdf Download

View and Download Delta MS300 Series user manual online. Standard Compact Drive. MS300 Series storage pdf manual download.

GRACO EXTEND2FIT INSTRUCTION MANUAL Pdf Download

View and Download Graco Extend2Fit instruction manual online. 3-in-1 Car Seat. Extend2Fit car seat pdf manual download.

ACORN SUPERGLIDE 130 USER MANUAL Pdf Download

View and Download Acorn Superglide 130 user manual online. Straight Stairlift. Superglide 130 stairlifts pdf manual download.

ATWOOD PILOT 6 GALLON USER MANUAL Pdf Download

View and Download Atwood Pilot 6 Gallon user manual online. Pilot 6 Gallon water heater pdf manual download. Also for: Electronic ignition 10 gallon, Pilot 10 gallon, Electronic ignition 6 ...

Explore our comprehensive guide to the manual Briggs and Stratton 675 series parts diagram. Find essential parts and maintenance tips. Learn more today!

[Back to Home](#)