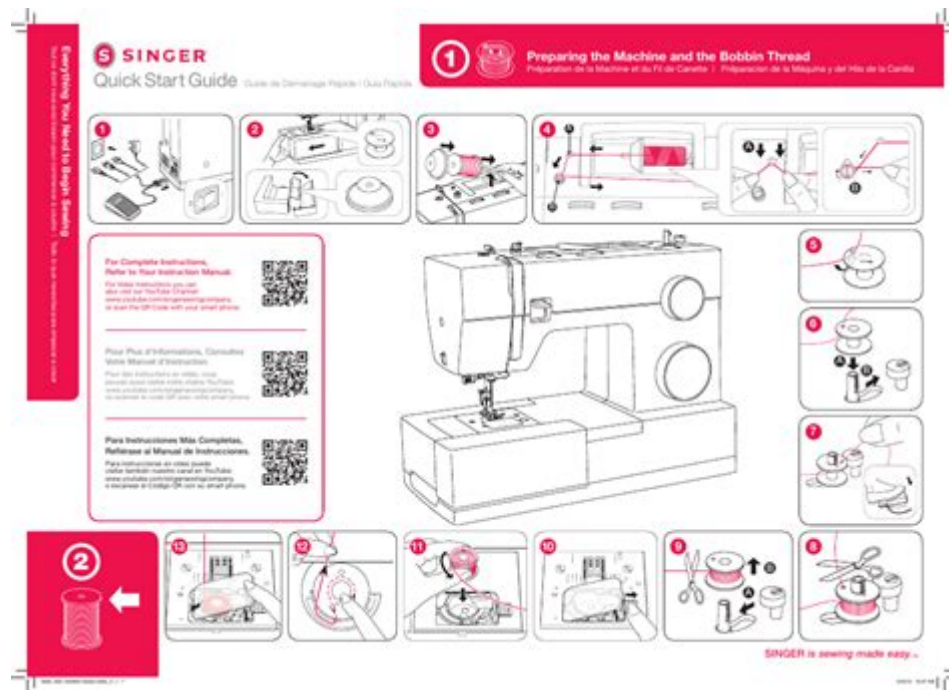


Manual For Singer Heavy Duty Sewing Machine



Manual for Singer Heavy Duty Sewing Machine

When it comes to sewing machines, the manual for Singer Heavy Duty sewing machine is an essential resource for both novice and experienced sewists. The Singer Heavy Duty sewing machine is known for its robust construction, high-speed sewing capabilities, and versatility, making it a favorite among sewing enthusiasts. This article will guide you through the various aspects of the manual, including setup, features, maintenance, troubleshooting, and additional tips for optimal use.

Getting Started with the Singer Heavy Duty Sewing Machine

Before delving into the specifics of the manual, it's important to understand the components and initial setup of your Singer Heavy Duty sewing machine.

Unboxing and Setup

When you first unbox your machine, ensure that you have the following components:

1. Sewing Machine Unit
2. Foot Pedal
3. Power Cord

4. Needles
5. Bobbins
6. Screwdriver
7. Spool Caps
8. Instruction Manual

To set up your sewing machine, follow these steps:

1. Choose a Clean Workspace: Find a flat, sturdy surface that is well-lit to comfortably use your sewing machine.
2. Connect the Power Cord: Plug the machine into a power source and connect the foot pedal.
3. Insert the Needle: Using the screwdriver, ensure the needle is securely fastened.
4. Winding the Bobbin: Follow the instructions in the manual to wind the bobbin correctly. This typically involves placing a spool of thread on the spindle, threading it through the tension discs, and winding it onto the bobbin.
5. Threading the Machine: Properly thread the machine as per the diagram in the manual, ensuring the thread passes through all necessary guides.

Understanding the Controls and Features

The Singer Heavy Duty sewing machine is equipped with several features that enhance its usability. Familiarizing yourself with these controls is crucial for effective sewing.

- Stitch Selector Dial: Allows you to choose from various stitch patterns, including straight, zigzag, and decorative stitches.
- Tension Dial: Adjusts the tension of the thread to ensure even stitching.
- Reverse Lever: Enables you to sew in reverse, reinforcing seams.
- Presser Foot Lifter: Raises and lowers the presser foot for ease in sewing multiple layers of fabric.
- Speed Control: Many models have a speed control feature that allows you to adjust the sewing speed according to your comfort level.

Basic Sewing Techniques

Once you have set up your machine and familiarized yourself with its components, you can start exploring basic sewing techniques.

Preparing Your Fabric

Before sewing, it's important to prepare your fabric:

1. Wash and Iron: Always wash and iron your fabric before cutting to avoid shrinkage and ensure precise cuts.
2. Cutting: Use a rotary cutter or scissors to cut your fabric according to your pattern.
3. Pinning: Pin the fabric pieces together to prevent shifting during sewing.

Sewing Basics

Here's how to perform basic sewing tasks with your Singer Heavy Duty machine:

1. Starting Stitch:

- Raise the presser foot and place the fabric under it.
- Lower the presser foot and begin sewing slowly, using the foot pedal.
- Use the reverse lever to backstitch at the beginning and end of your seam.

2. Changing Stitches:

- To change stitches, stop the machine and adjust the stitch selector dial.
- Ensure the thread tension is appropriate for the stitch type.

3. Finishing Edges:

- To prevent fraying, finish the edges of your fabric using a zigzag stitch or an overlock stitch.

Maintenance of the Singer Heavy Duty Sewing Machine

Regular maintenance is key to ensuring your sewing machine operates smoothly and efficiently. The manual provides guidelines on how to care for your machine.

Cleaning Your Machine

Cleaning your sewing machine involves:

1. Dusting: Regularly dust the exterior of the machine to keep it clean.
2. Removing Thread Buildup: Open the bobbin case and remove any thread pieces or lint.
3. Oiling: Follow the manual's instructions on where to apply oil to keep the machine running smoothly. Typically, this includes oiling the needle bar and hook area.

Checking the Needle and Thread

- Needle Replacement: Replace the needle regularly, especially if you notice skipped stitches or fabric snags.
- Thread Quality: Use high-quality threads that are suitable for your fabric type to minimize issues.

Troubleshooting Common Issues

Even with proper care, you may encounter some common issues while using your Singer Heavy Duty sewing machine. The manual provides troubleshooting tips for these scenarios.

Common Problems and Solutions

1. Machine Won't Sew:

- Check if the machine is plugged in and powered on.
- Ensure the foot pedal is functioning.
- Verify that the needle is installed correctly.

2. Thread Bunching or Jamming:

- Rethread the machine and bobbin.
- Check for any tangled threads in the bobbin area.
- Ensure the bobbin is wound evenly and inserted correctly.

3. Skipped Stitches:

- Replace the needle if it's bent or dull.
- Adjust the tension settings according to the fabric being used.

4. Fabric Not Feeding:

- Check the feed dogs; they should be up and engaged.
- Ensure the presser foot is lowered.

Advanced Features and Techniques

For those looking to expand their sewing skills, the Singer Heavy Duty sewing machine offers advanced features that can be utilized for more complex projects.

Utilizing Decorative Stitches

Explore the decorative stitches available on your machine to enhance your projects. The manual will provide information on how to select and use these stitches effectively.

Quilting and Upholstery Techniques

The heavy-duty capabilities of this machine make it suitable for quilting and upholstery work. When working with multiple layers of fabric, consider using a walking foot, which can be an accessory purchased separately.

Conclusion

The manual for Singer Heavy Duty sewing machine is an invaluable guide that can elevate your sewing experience. From understanding the setup and features to performing maintenance and troubleshooting, the manual covers all aspects essential for effective sewing. By following the guidelines and tips provided, you can maximize the potential of your Singer Heavy Duty sewing

machine, ensuring that your projects not only come to life but also exhibit professionalism and quality. Whether you are a beginner or a seasoned sewist, mastering the use of this machine can lead to endless creative possibilities.

Frequently Asked Questions

What is the best way to thread a Singer Heavy Duty sewing machine?

To thread a Singer Heavy Duty sewing machine, raise the presser foot, place the spool on the spool pin, follow the threading path indicated on the machine, and make sure the needle is fully inserted and facing the correct direction.

Where can I find a manual for my Singer Heavy Duty sewing machine?

You can find the manual for your Singer Heavy Duty sewing machine on the official Singer website under the 'Support' section, or you can check online marketplaces that offer downloadable PDF versions.

What types of fabrics can the Singer Heavy Duty sewing machine handle?

The Singer Heavy Duty sewing machine is designed to handle a variety of fabrics, including heavy fabrics like denim and canvas, as well as lighter materials such as cotton and silk.

How do I troubleshoot common issues with the Singer Heavy Duty sewing machine?

Common issues can often be resolved by checking the threading, ensuring the needle is not bent or dull, cleaning the bobbin area, and adjusting the tension settings as needed.

Can I use twin needles with the Singer Heavy Duty sewing machine?

Yes, you can use twin needles with the Singer Heavy Duty sewing machine, but ensure to adjust the settings accordingly and use the correct needle size for your project.

What kind of maintenance does a Singer Heavy Duty sewing machine require?

Regular maintenance includes cleaning the bobbin area, oiling the machine as specified in the manual, changing the needle frequently, and ensuring the machine is stored in a dust-free environment.

Is the Singer Heavy Duty sewing machine suitable for quilting?

Yes, the Singer Heavy Duty sewing machine is suitable for quilting, especially for beginners or those working on simple quilts, thanks to its strong motor and ability to sew through multiple layers of fabric.

Find other PDF article:

<https://soc.up.edu.ph/27-proof/files?ID=IUX58-3731&title=hesi-a2-exam-answers.pdf>

[Manual For Singer Heavy Duty Sewing Machine](#)

[ManualsLib - Makes it easy to find manuals online!](#)

Just enter the keywords in the search field and find what you are looking for! Search results include manual name, description, size and number of pages. You can either read manual ...

Brands | ManualsLib

Search through 3.000.000 manuals online & and download pdf manuals.

HONEYWELL HOME PRO SERIES USER MANUAL Pdf Download

View and Download Honeywell Home Pro Series user manual online. Home Pro Series thermostat pdf manual download. Also for: T6 pro.

[GRACO 4EVER INSTRUCTION MANUAL Pdf Download | ManualsLib](#)

View and Download Graco 4Ever instruction manual online. All-in-one Car Seat. 4Ever car seat pdf manual download.

LOGITECH K400 PLUS QUICK MANUAL Pdf Download | ManualsLib

View and Download Logitech K400 Plus quick manual online. K400 Plus keyboard pdf manual download.

BLUE YETI OWNER'S MANUAL Pdf Download | ManualsLib

View and Download Blue Yeti owner's manual online. Ultimate USB microphone for professional recording. Yeti microphone pdf manual download.

DELTA MS300 SERIES USER MANUAL Pdf Download

View and Download Delta MS300 Series user manual online. Standard Compact Drive. MS300 Series storage pdf manual download.

GRACO EXTEND2FIT INSTRUCTION MANUAL Pdf Download

View and Download Graco Extend2Fit instruction manual online. 3-in-1 Car Seat. Extend2Fit car seat pdf manual download.

ACORN SUPERGLIDE 130 USER MANUAL Pdf Download

View and Download Acorn Superglide 130 user manual online. Straight Stairlift. Superglide 130

stairlifts pdf manual download.

ATWOOD PILOT 6 GALLON USER MANUAL Pdf Download

View and Download Atwood Pilot 6 Gallon user manual online. Pilot 6 Gallon water heater pdf manual download. Also for: Electronic ignition 10 gallon, Pilot 10 gallon, Electronic ignition 6 ...

ManualsLib - Makes it easy to find manuals online!

Just enter the keywords in the search field and find what you are looking for! Search results include manual name, description, size and number of pages. You can either read manual online or ...

Brands | ManualsLib

Search through 3.000.000 manuals online & and download pdf manuals.

HONEYWELL HOME PRO SERIES USER MANUAL Pdf Download

View and Download Honeywell Home Pro Series user manual online. Home Pro Series thermostat pdf manual download. Also for: T6 pro.

GRACO 4EVER INSTRUCTION MANUAL Pdf Download | ManualsLib

View and Download Graco 4Ever instruction manual online. All-in-one Car Seat. 4Ever car seat pdf manual download.

LOGITECH K400 PLUS QUICK MANUAL Pdf Download | ManualsLib

View and Download Logitech K400 Plus quick manual online. K400 Plus keyboard pdf manual download.

BLUE YETI OWNER'S MANUAL Pdf Download | ManualsLib

View and Download Blue Yeti owner's manual online. Ultimate USB microphone for professional recording. Yeti microphone pdf manual download.

DELTA MS300 SERIES USER MANUAL Pdf Download

View and Download Delta MS300 Series user manual online. Standard Compact Drive. MS300 Series storage pdf manual download.

GRACO EXTEND2FIT INSTRUCTION MANUAL Pdf Download

View and Download Graco Extend2Fit instruction manual online. 3-in-1 Car Seat. Extend2Fit car seat pdf manual download.

ACORN SUPERGLIDE 130 USER MANUAL Pdf Download

View and Download Acorn Superglide 130 user manual online. Straight Stairlift. Superglide 130 stairlifts pdf manual download.

ATWOOD PILOT 6 GALLON USER MANUAL Pdf Download

View and Download Atwood Pilot 6 Gallon user manual online. Pilot 6 Gallon water heater pdf manual download. Also for: Electronic ignition 10 gallon, Pilot 10 gallon, Electronic ignition 6 ...

Unlock the full potential of your Singer heavy duty sewing machine with our comprehensive manual. Discover how to master your machine today!

[Back to Home](#)