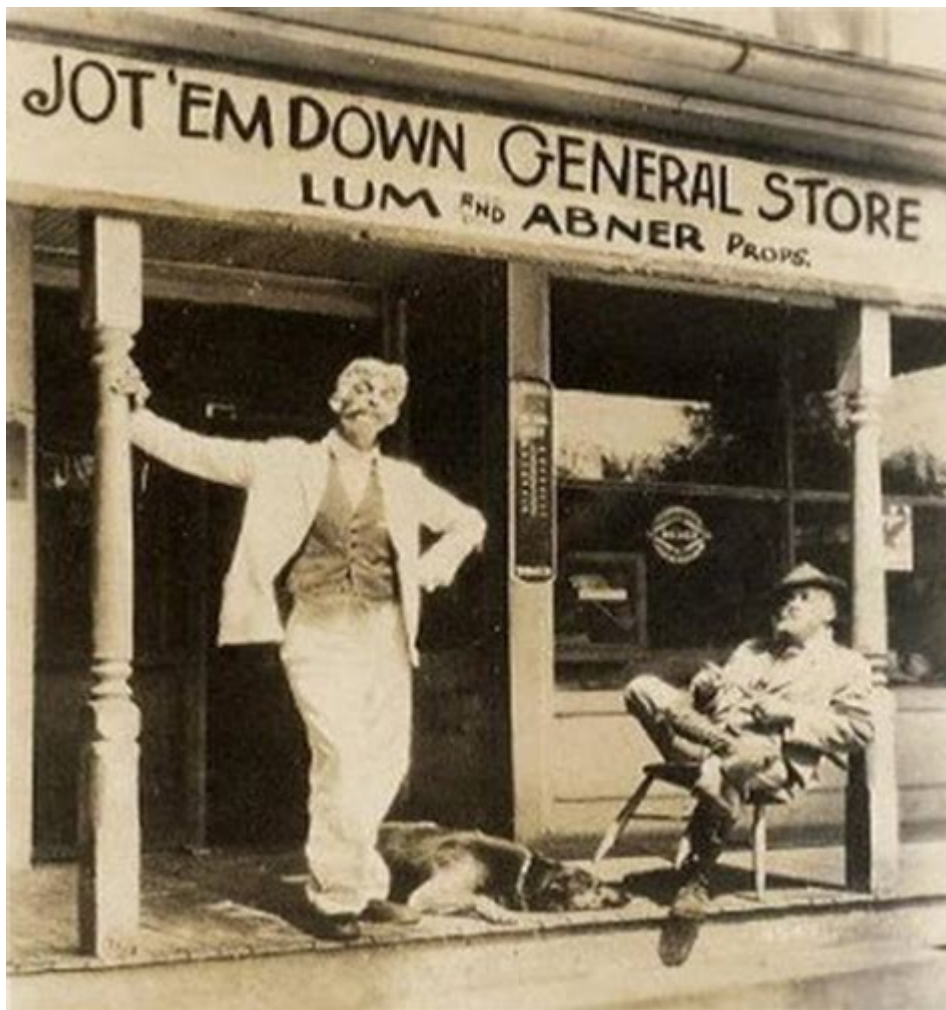


Lum And Abner Radio Show



Lum and Abner Radio Show was a beloved American radio program that aired from 1931 to 1954. It was a cornerstone of American entertainment in the early to mid-20th century, capturing the hearts of audiences with its clever writing, endearing characters, and the unique charm of rural life in the fictional town of Pine Ridge, Arkansas. This article explores the origins, characters, impact, and legacy of the Lum and Abner Radio Show, highlighting its significance in the world of broadcasting and American culture.

Origins of Lum and Abner

The Lum and Abner Radio Show originated from a series of comedic skits performed by two Arkansas natives, Chester Lauck and Norris Goff. The duo began their careers in a local variety show in the late 1920s, where they developed the characters Lum Edwards and Abner Peabody. Their comedic chemistry and natural storytelling ability quickly garnered attention.

In 1931, Lauck and Goff made the leap to radio, creating a program that would soon become a staple of American entertainment. The show was initially broadcast on a local station before gaining national syndication through the Columbia Broadcasting System (CBS). As it gained popularity, Lum and Abner

became synonymous with rural comedy, reflecting the everyday lives of ordinary Americans during the Great Depression.

Character Development

The success of the Lum and Abner Radio Show can be attributed to its rich character development. The main characters, Lum and Abner, were unique and relatable figures who embodied the spirit of rural America.

- Lum Edwards: Played by Chester Lauck, Lum was the more ambitious and entrepreneurial of the duo. He often devised schemes to improve the town's economy or his own financial situation, although these plans frequently led to humorous mishaps. Lum's character was marked by his shrewdness and his ability to think outside the box, albeit often in misguided ways.

- Abner Peabody: Norris Goff portrayed Abner as the more naive and simple-minded counterpart to Lum. Abner was the quintessential good-hearted country bumpkin who often served as a foil to Lum's more ambitious nature. His gullibility and lack of common sense provided endless opportunities for comedy, especially as he unwittingly became embroiled in Lum's schemes.

The interplay between Lum and Abner created a dynamic that resonated with listeners. Their friendship, misunderstandings, and comedic banter provided a comforting escape for audiences during tough times.

Show Format and Content

The Lum and Abner Radio Show followed a loose format that combined scripted storylines with improvisational humor. Each episode typically revolved around a central theme or plot, often involving Lum's latest get-rich-quick scheme and Abner's amusing attempts to understand it.

Recurring Themes

Several recurring themes and elements characterized the show:

1. **Small-Town Life:** The show depicted life in Pine Ridge, showcasing the quirks and idiosyncrasies of rural living. Listeners could easily relate to the characters' experiences, as they navigated the ups and downs of small-town life.
2. **Friendship and Community:** The bond between Lum and Abner emphasized the importance of friendship and community support. Their interactions often highlighted the strength of relationships in overcoming challenges.
3. **Entrepreneurial Spirit:** Lum's various business ventures and schemes often served as a commentary on the American Dream. The show's humor was derived from the contrast between ambition and practicality, as Lum's plans rarely unfolded as intended.

4. Everyday Problems: The characters faced relatable everyday issues, making the humor accessible to a broad audience. Whether it was dealing with the local gossip or managing a failing business, the situations were grounded in reality.

Notable Segments

Throughout its run, the show featured memorable segments that became fan favorites. Some of these included:

- The Jot 'Em Down Store: A central location in Pine Ridge, the store was run by Lum and Abner and served as a backdrop for many of their adventures. The store represented the heart of the community and often became a hub for local gossip and shenanigans.
- The Pine Ridge Gazette: The local newspaper often provided comedic commentary on town events, further immersing listeners in the Pine Ridge experience.
- Special Guests: Occasionally, the show featured guest appearances by other radio personalities or celebrities, adding an extra layer of excitement for the audience.

Impact on Radio and Culture

The Lum and Abner Radio Show significantly impacted the world of radio and American culture. Its success paved the way for other rural-themed comedies and brought attention to the potential of radio as a storytelling medium.

Pioneering Influence

1. Rural Comedy: Lum and Abner set the stage for future radio shows featuring rural themes, such as "The Grand Ole Opry" and "The Beverly Hillbillies." Their comedic portrayal of country life resonated with audiences and influenced the genre.
2. Character-Driven Storytelling: The show's focus on character development and relationships helped shape narrative techniques in radio and television. This emphasis on character-driven storytelling remains a hallmark of successful programs today.
3. Cultural Reflection: Lum and Abner reflected the struggles and aspirations of ordinary Americans during the Great Depression. The show provided a sense of hope and laughter, allowing listeners to escape from their daily hardships.

Legacy

The Lum and Abner Radio Show left a lasting legacy that continues to be felt in entertainment today. Its influence can be seen in various forms of media, including television, film, and modern radio.

programming.

- **Television Adaptations:** In 1955, the characters of Lum and Abner were adapted into a television series, further cementing their place in American pop culture. Although the series was short-lived, it introduced the characters to a new generation.

- **Continued Presence:** The original radio episodes have been preserved and are available through various media outlets, allowing fans both old and new to experience the charm of Lum and Abner. The show's comedic style and character dynamics remain relevant, appealing to audiences even decades later.

- **Cultural References:** The characters and themes of Lum and Abner have been referenced in various forms of media, underscoring their enduring impact. They serve as a nostalgic reminder of a simpler time and the power of friendship.

Conclusion

The Lum and Abner Radio Show stands as a testament to the power of storytelling and the enduring appeal of humor. With its relatable characters, clever writing, and a heartwarming portrayal of small-town life, the show captured the essence of American culture during a challenging era. Its legacy continues to influence contemporary media and entertain audiences, ensuring that Lum and Abner will remain cherished characters in the annals of entertainment history.

Frequently Asked Questions

What is 'Lum and Abner'?

'Lum and Abner' is a classic American radio comedy series that aired from 1931 to 1954, created by Chester Lauck and Norris Goff.

Who were the main characters in 'Lum and Abner'?

The main characters were Lum Edwards and Abner Peabody, played by Chester Lauck and Norris Goff, respectively.

What was the setting of 'Lum and Abner'?

The show was set in the fictional town of Pine Ridge, Arkansas, where Lum and Abner ran a general store.

What themes were commonly explored in 'Lum and Abner'?

The show often explored themes of friendship, small-town life, and humorous misunderstandings.

Did 'Lum and Abner' have any spin-off series or adaptations?

Yes, 'Lum and Abner' spawned several spin-offs, including a short-lived television series and a feature

film in 1940.

How did 'Lum and Abner' contribute to the popularity of radio comedy?

The show helped popularize the format of situational comedy on radio, influencing later shows with its character-driven humor.

What was the format of a typical 'Lum and Abner' episode?

Episodes typically featured comedic dialogue between Lum and Abner, often revolving around schemes or local events.

What impact did 'Lum and Abner' have on American culture?

The show became a beloved part of American pop culture, representing rural life and resonating with audiences during the Great Depression.

Are there any surviving recordings of 'Lum and Abner'?

Yes, many episodes have been preserved and are available for listening through various media outlets and online archives.

Why is 'Lum and Abner' still relevant today?

The show's humor and relatable characters continue to resonate with audiences, and it offers a nostalgic glimpse into early 20th-century American life.

Find other PDF article:

<https://soc.up.edu.ph/06-link/files?trackid=vLT32-4360&title=anatomy-of-house-framing.pdf>

Lum And Abner Radio Show

bonn ...

Dec 3, 2020 · bonn tum lum 135

CAD2020 -

AutoCAD2020 “” ...

...

LED ...

lumerical ftdt matlab -

FDTD 0-1 0-1 MATLAB ftdt MATLAB 2018

[help_matlab integration status](#)

[Well Scan -](#)
Well Scan ABS FL LUM Endpoint Kinetic
Well Scan ...

[LUM -](#)
LUM 5

[lm mw/cm2 -](#)
lm (Radiant Flux) (Radiant Energy) (J)
lm ...

[ollama lm studio -](#)
LM STUDIO 24GB N HG
ollama ...

[2 -](#)
2 ABS FL LUM TRF
FP ...

[FORMULACTION -](#)
FORMULACTION
TURBISCAN ...

[bonn -](#)
Dec 3, 2020 · bonn tum lum 135

[CAD2020 -](#)
AutoCAD2020 “
...

[LED -](#)
LED
...

[lumerical fdtd matlab -](#)
FDTD 0-1 0-1 MATLAB fdtd MATLAB 2018
help_matlab integration ...

[Well Scan -](#)
Well Scan ABS FL LUM Endpoint Kinetic
Well Scan ...

[LUM -](#)
LUM 5

[lm mw/cm2 -](#)
lm (Radiant Flux) (Radiant Energy) (J)
lm ...

ollama lm studio? -

LM STUDIO 24GB N HG

? -

2 ABS FL LUM TRF FP

? -

FORMULACTION TURBISCAN

Discover the charm of the Lum and Abner radio show

[Back to Home](#)