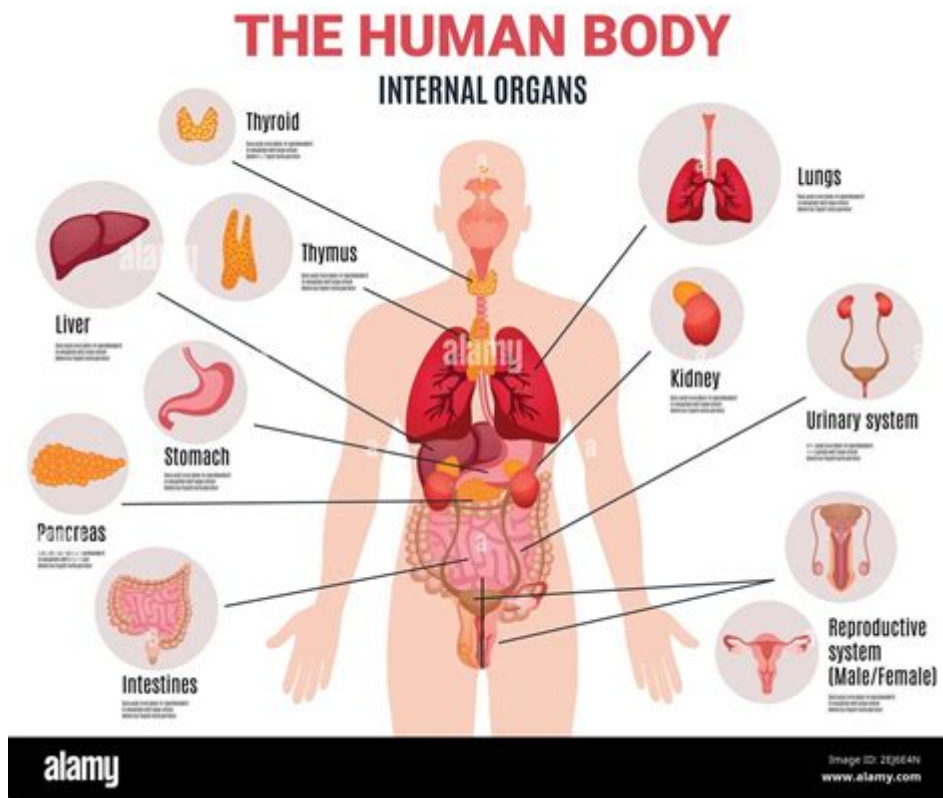


# Location Of Internal Organs In The Human Body



## Location of Internal Organs in the Human Body

Understanding the location of internal organs in the human body is essential for a variety of reasons, ranging from medical education to personal health awareness. The human body is a complex structure with numerous organs that perform vital functions necessary for maintaining life. These organs are organized into systems that work in harmony to ensure the body operates efficiently. This article provides a detailed overview of the major internal organs, their locations, and their functions, structured to enhance comprehension.

## Overview of Human Body Organization

The human body can be divided into various regions and cavities, which house the internal organs.

The two main body cavities are:

- Thoracic Cavity: Enclosed by the ribcage and diaphragm, it houses organs related to respiration and circulation.
- Abdominopelvic Cavity: Located below the diaphragm, it contains organs involved in digestion, excretion, and reproduction.

## Body Regions and Their Significance

The human body is often divided into regions for the purpose of studying anatomy and physiology. The regions include:

- Cervical Region: Neck area containing the trachea and esophagus.
- Thoracic Region: Chest area containing the heart and lungs.
- Abdominal Region: Area below the ribcage, housing organs like the stomach, liver, and intestines.
- Pelvic Region: Lower part of the abdomen, containing reproductive organs and the bladder.

## Major Internal Organs and Their Locations

Here, we outline the major internal organs, their locations, and functions within the body.

### 1. The Heart

- Location: The heart is located in the thoracic cavity, between the lungs, slightly to the left of the midline of the body.
- Function: The heart pumps blood throughout the body, supplying oxygen and nutrients while removing carbon dioxide and other wastes.

## **2. The Lungs**

- Location: The lungs are situated on either side of the heart in the thoracic cavity. Each lung is divided into lobes (three in the right lung and two in the left).
- Function: The lungs facilitate gas exchange, allowing oxygen to enter the bloodstream and carbon dioxide to be expelled.

## **3. The Liver**

- Location: The liver is positioned in the upper right quadrant of the abdomen, just below the diaphragm and above the stomach.
- Function: The liver processes nutrients from food, detoxifies harmful substances, and produces bile for digestion.

## **4. The Stomach**

- Location: The stomach is located in the upper left quadrant of the abdomen, just below the ribs and above the intestines.
- Function: The stomach breaks down food using acids and enzymes, preparing it for further digestion in the intestines.

## **5. The Kidneys**

- Location: The kidneys are located in the posterior part of the abdominal cavity, one on each side of the spine, typically at the level of the lower ribs.
- Function: The kidneys filter blood to produce urine, regulating fluid balance, electrolyte levels, and blood pressure.

## 6. The Intestines

- Small Intestine:
  - Location: The small intestine is coiled within the central and lower abdominal cavity.
  - Function: It is responsible for nutrient absorption and digestion.
- Large Intestine:
  - Location: The large intestine encircles the small intestine and extends from the lower right to the lower left abdomen.
  - Function: It absorbs water and forms waste products for excretion.

## 7. The Pancreas

- Location: The pancreas lies behind the stomach, extending across the back of the abdomen.
- Function: It produces enzymes that aid digestion and hormones like insulin for blood sugar regulation.

## 8. The Spleen

- Location: The spleen is located in the upper left quadrant of the abdomen, behind the stomach and above the left kidney.
- Function: The spleen helps filter blood, recycle iron, and support the immune system.

## 9. The Bladder

- Location: The bladder is located in the pelvic cavity, posterior to the pubic symphysis and anterior to the rectum in males and the uterus in females.
- Function: The bladder stores urine produced by the kidneys until it is ready to be excreted.

## 10. The Reproductive Organs

- In Males:

- Location: The testes are located in the scrotum, while the prostate gland is situated below the bladder.

- Function: Responsible for sperm production and hormone regulation.

- In Females:

- Location: The ovaries are located in the pelvic cavity, near the lateral walls, while the uterus is located centrally within the pelvis.

- Function: Responsible for egg production, hormone secretion, and nurturing a developing fetus during pregnancy.

## Conclusion

The internal organs of the human body are intricately organized within various cavities and regions, each serving critical functions that sustain life. Understanding the location and function of these organs is essential not only for medical professionals but also for individuals looking to enhance their health literacy. Knowledge of how these organs interact and support bodily functions can empower people to make informed decisions regarding their health and well-being.

In summary, the heart, lungs, liver, stomach, kidneys, intestines, pancreas, spleen, bladder, and reproductive organs all play vital roles in maintaining homeostasis. By familiarizing ourselves with the anatomy of the human body, we gain insights into how to care for ourselves and recognize potential health issues. This foundational knowledge can lead to a more proactive approach to health management and disease prevention.

# **Frequently Asked Questions**

## **Where is the heart located in the human body?**

The heart is located in the chest cavity, between the lungs and slightly to the left of the midline of the body, protected by the rib cage.

## **What is the position of the liver in relation to other organs?**

The liver is located in the upper right quadrant of the abdomen, just below the diaphragm and above the stomach, and it extends across the midline to the left side of the body.

## **Where can the kidneys be found in the human body?**

The kidneys are located in the retroperitoneal space, on either side of the spine, approximately at the level of the lower ribs.

## **What is the anatomical location of the stomach?**

The stomach is located in the upper left part of the abdomen, beneath the rib cage, and is connected to the esophagus above and the small intestine below.

## **Where is the spleen situated?**

The spleen is located in the upper left quadrant of the abdomen, just behind the stomach and to the left of the diaphragm.

## **Can you describe the location of the intestines?**

The small intestines are located in the central and lower abdomen, while the large intestines encircle the small intestines and are positioned more towards the outer edges of the abdominal cavity.

## **Where is the pancreas located in the human body?**

The pancreas is located behind the stomach and extends horizontally across the back of the abdomen,

with its head nestled in the curve of the duodenum.

Find other PDF article:

<https://soc.up.edu.ph/51-grid/pdf?ID=UID36-0680&title=rooms-and-exits-bakery-walkthrough.pdf>

## **Location Of Internal Organs In The Human Body**

Share your real-time location with others in Google Maps

Stop sharing your location in Google Maps On your Android phone or tablet, open the Google Maps app . Tap your profile picture or initial Location sharing. Tap the profile of the person you don't ...

**Find & improve your location's accuracy in Google Maps**

Find your current location in Google Maps In your browser, give Maps location permission. Manage your location settings in Chrome. If you use an Internet browser other than Chrome, find ...

Search by latitude & longitude in Google Maps

On your computer, open Google Maps. On the map, right-click the place or area. A pop-up window appears. At the top, you can find your latitude and longitude in decimal format. To copy the ...

*Manage your Location History - Google Account Help*

Google Location Services Location Sharing Find My Device If settings like Web and App Activity are on but you turn off Location History or delete location data from Location History, your Google ...

*Understand & manage your location when you search on Google*

Your location comes from a variety of sources, which are used together to estimate where you are. You can update your location settings as you use Google services to get the search results you ...

Share your real-time location with others in Google Maps

Learn how to share your location on your Android phone or tablet or iPhone or iPad. Find someone's location in Google Maps You can find someone on your map when they share their location with ...

**Manage your Location Sharing settings - Android - Android Help**

Google Location Sharing is an Android setting. It lets you share your real-time location from devices with people you choose in Google apps or services such as Maps, Family Link, or Personal Safety.

*Search locations on Google Maps - Computer - Google Maps Help*

General places on the map Local results appear for people who search for businesses and places near their location. They're shown in various places across Maps and Search. For example, if you ...

*Manage your Android device's location settings - Android Help*

You can use location-based services such as local search results, commute predictions, and nearby restaurants based on your device's location, when device location is on in settings.

Change your Search browser settings - Computer - Google Help

The settings you can choose depend on whether you're on a computer, tablet, or phone. SafeSearch

filters Search with autocomplete Results per page Spoken answers Where results ...

### **Share your real-time location with others in Google Maps**

Stop sharing your location in Google Maps On your Android phone or tablet, open the Google Maps app . Tap your profile picture or initial Location sharing. Tap the profile of the person you don't ...

### **Find & improve your location's accuracy in Google Maps**

Find your current location in Google Maps In your browser, give Maps location permission. Manage your location settings in Chrome. If you use an Internet browser other than Chrome, find ...

#### *Search by latitude & longitude in Google Maps*

On your computer, open Google Maps. On the map, right-click the place or area. A pop-up window appears. At the top, you can find your latitude and longitude in decimal format. To copy the ...

#### Manage your Location History - Google Account Help

Google Location Services Location Sharing Find My Device If settings like Web and App Activity are on but you turn off Location History or delete location data from Location History, your Google ...

### **Understand & manage your location when you search on Google**

Your location comes from a variety of sources, which are used together to estimate where you are. You can update your location settings as you use Google services to get the search results you ...

### **Share your real-time location with others in Google Maps**

Learn how to share your location on your Android phone or tablet or iPhone or iPad. Find someone's location in Google Maps You can find someone on your map when they share their location with ...

#### *Manage your Location Sharing settings - Android - Android Help*

Google Location Sharing is an Android setting. It lets you share your real-time location from devices with people you choose in Google apps or services such as Maps, Family Link, or Personal Safety.

### **Search locations on Google Maps - Computer - Google Maps Help**

General places on the map Local results appear for people who search for businesses and places near their location. They're shown in various places across Maps and Search. For example, if you ...

#### Manage your Android device's location settings - Android Help

You can use location-based services such as local search results, commute predictions, and nearby restaurants based on your device's location, when device location is on in settings.

### **Change your Search browser settings - Computer - Google Help**

The settings you can choose depend on whether you're on a computer, tablet, or phone. SafeSearch filters Search with autocomplete Results per page Spoken answers Where results ...

Explore the location of internal organs in the human body and understand their functions. Discover how these organs work together for optimal health. Learn more!

[Back to Home](#)