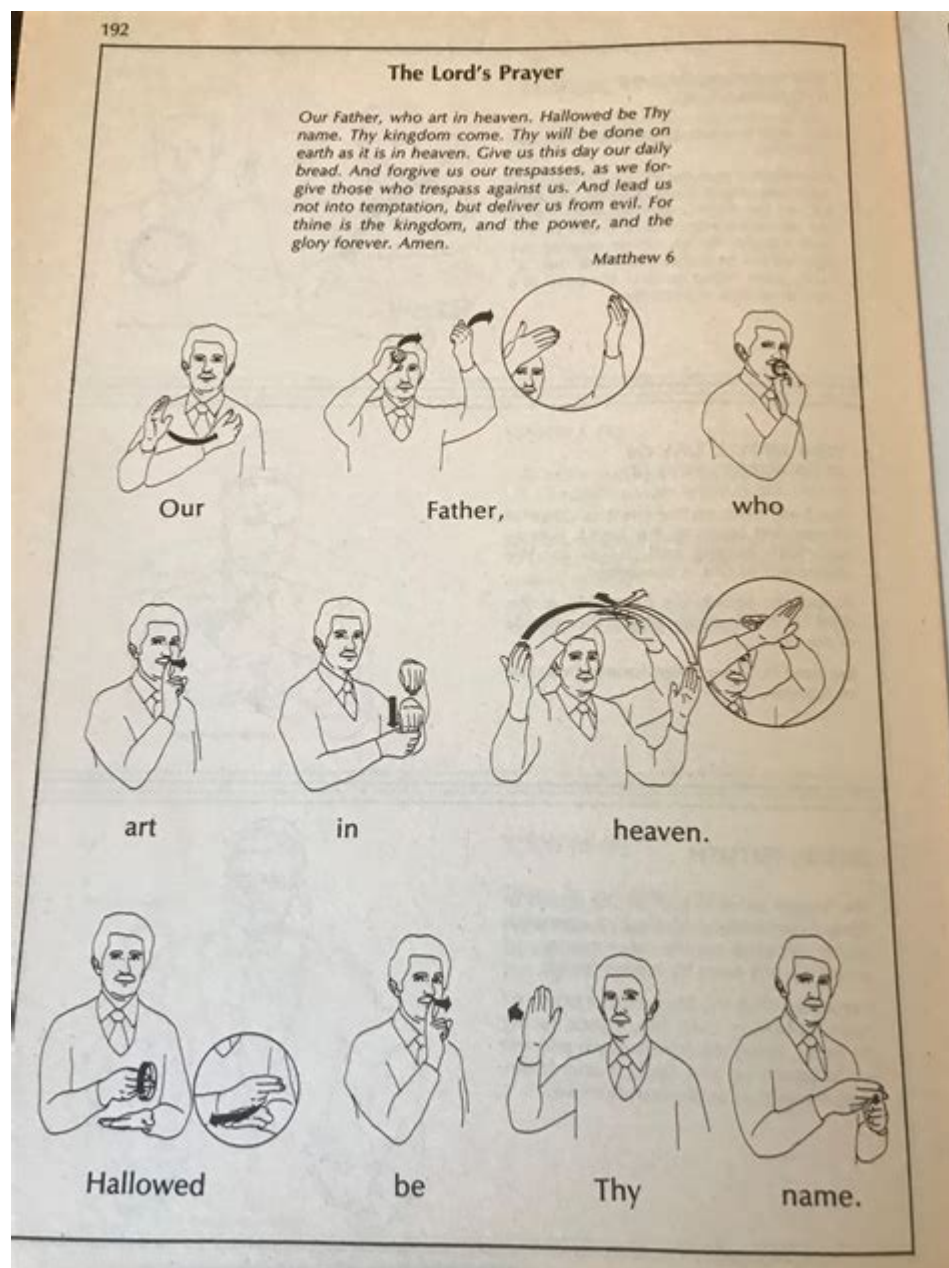


Lords Prayer In Sign Language



Lords Prayer in Sign Language is a beautiful way to bridge the gap between spoken and signed communication, allowing individuals who are deaf or hard of hearing to engage in prayer and spirituality. This article will explore the significance of the Lord's Prayer, the basics of sign language, how the Lord's Prayer can be expressed in sign language, and the cultural context surrounding it. By the end, readers will have a deeper understanding and appreciation of this important aspect of communication within the deaf community.

Understanding the Lord's Prayer

The Lord's Prayer, also known as the Our Father, is one of the most well-known prayers in Christianity. It is derived from the teachings of Jesus and is found in the New Testament of the Bible, specifically in the books of Matthew (6:9-13) and Luke (11:2-4). The prayer serves as a model for believers on how to pray and encompasses essential themes of faith, forgiveness, and the divine relationship between God and humanity.

Components of the Lord's Prayer

The Lord's Prayer consists of several key components:

1. Addressing God: The prayer begins by recognizing God's holiness and sovereignty.
2. Requesting Daily Needs: It emphasizes the importance of relying on God for daily sustenance.
3. Seeking Forgiveness: The prayer acknowledges the need for forgiveness and the importance of forgiving others.
4. Guidance and Protection: It concludes with a request for guidance away from temptation and evil.

Each of these elements carries profound meaning and is pivotal in the lives of many Christians.

The Basics of Sign Language

Sign language is a visual form of communication that uses hand shapes, facial expressions, and body language to convey meaning. Different regions and communities have their own variations of sign language, with American Sign Language (ASL) being one of the most widely recognized in the United States.

Key Features of Sign Language

1. Manual Signs: Each sign represents a word, concept, or phrase.
2. Facial Expressions: Facial expressions play a critical role in conveying emotions and grammatical aspects.
3. Body Language: The way a person holds their body can indicate different meanings and intents.
4. Contextual Understanding: The interpretation of signs can vary based on the context in which they are used.

Why Use Sign Language for Prayer?

Using sign language for prayer serves several important purposes:

- Accessibility: It makes prayer accessible to those who are deaf or hard of hearing.
- Inclusivity: It fosters a sense of belonging within religious communities.
- Cultural Expression: Sign language often carries cultural significance and expression unique to the deaf community.

Expressing the Lord's Prayer in Sign Language

Translating the Lord's Prayer into sign language involves understanding both the language and the prayer's meaning. Here is a breakdown of how each part of the Lord's Prayer can be expressed in American Sign Language (ASL):

Step-by-Step Breakdown

1. Our Father, who art in heaven:

- Sign for "Our": Use both hands to indicate inclusiveness.
- Sign for "Father": Place your dominant hand on your forehead, moving it outward.
- Sign for "Heaven": Use a flat hand to move upward, indicating elevation.

2. Hallowed be thy name:

- Sign for "Hallowed": Use both hands in a gesture that indicates reverence.
- Sign for "Thy Name": Point to the sky, then use a finger-spelling for "name" (N-A-M-E).

3. Thy kingdom come:

- Sign for "Kingdom": Use a flat hand and move it down in a circular motion.
- Sign for "Come": Move your hands towards your body.

4. Thy will be done on earth as it is in heaven:

- Sign for "Will": Use a flat hand and move it forward.
- Sign for "Earth": Use a flat hand to represent the ground.
- Combine these signs fluidly to convey the entire phrase.

5. Give us this day our daily bread:

- Sign for "Give": Open your hand and move it toward the person you are addressing.
- Sign for "Bread": Use your hands to shape a loaf and then move it towards your mouth.

6. And forgive us our trespasses:

- Sign for "Forgive": Place your dominant hand in front of your chest and

move it outward.

- Sign for "Trespases": Use a flat hand to indicate boundaries and then cross your arms.

7. As we forgive those who trespass against us:

- Repeat the sign for "forgive" and indicate "those" with a gesture pointing outward.

8. And lead us not into temptation:

- Sign for "Lead": Use your dominant hand to show guidance.
- Sign for "Temptation": Use both hands to indicate a struggle or pulling.

9. But deliver us from evil:

- Sign for "Deliver": Use your hands to indicate taking something away.
- Sign for "Evil": Use a hand shape that indicates darkness or negativity.

10. Amen:

- Sign for "Amen": Place both hands together in a prayer position and bow your head slightly.

Practice and Consistency

To effectively express the Lord's Prayer in sign language, it is essential to practice regularly. Here are some tips for practice:

- Join a Sign Language Class: Seek local classes or online resources to learn ASL.
- Engage with the Deaf Community: Attend events or services where sign language is used.
- Practice with Friends or Family: Use the prayer as an opportunity to share and practice together.
- Utilize Online Videos: Many resources are available that demonstrate prayers in sign language.

Cultural Context and Sign Language in Religion

The use of sign language in religious contexts is not limited to Christianity. Various faiths recognize the importance of inclusivity and accessibility. Understanding the cultural aspects of sign language can enhance the overall experience of prayer and worship.

The Role of the Deaf Community in Religion

- Community Building: Religious institutions have played a vital role in fostering community among deaf individuals.

- Interpreters: Many churches employ interpreters to ensure that deaf congregants can participate fully in services.
- Cultural Preservation: The deaf community often has its own cultural practices and traditions that are important to preserve within religious contexts.

Challenges and Opportunities

While there is progress in making religious practices more inclusive, challenges remain:

- Access to Resources: Not all religious institutions have access to trained interpreters or resources for the deaf community.
- Awareness: There is a need for greater awareness and education about the importance of sign language in religious settings.

On the other hand, there are also opportunities for growth:

- Increased Training: Developing training programs for interpreters within religious communities can enhance inclusivity.
- Collaboration: Partnerships between religious organizations and the deaf community can lead to more accessible worship experiences.

Conclusion

The Lord's Prayer in Sign Language serves as a vital connection between faith and communication for many individuals. By embracing sign language, religious communities can foster inclusivity, accessibility, and understanding. As we continue to break down barriers and promote awareness, the beauty of prayer in all its forms can be appreciated by everyone, regardless of their ability to hear. Through practice, education, and community building, we can ensure that the Lord's Prayer resonates with all believers, enriching their spiritual journey.

Frequently Asked Questions

What is the significance of the Lord's Prayer in religious practices?

The Lord's Prayer is a central Christian prayer that represents a model of how to pray, encompassing praise, petition, and a call for forgiveness.

How can I learn to sign the Lord's Prayer in sign language?

You can learn to sign the Lord's Prayer by finding online tutorials, attending sign language classes, or using resources like books and videos specifically focused on religious signs.

Are there different sign languages for the Lord's Prayer?

Yes, there are variations of sign language, such as American Sign Language (ASL) and British Sign Language (BSL), each with its own signs for the Lord's Prayer.

What are the key signs in the Lord's Prayer?

Key signs include 'Our Father', 'heaven', 'hallowed', 'name', 'kingdom', 'will', 'daily bread', 'forgive', and 'trespasses'.

Can children learn the Lord's Prayer in sign language?

Absolutely! Children can learn the Lord's Prayer in sign language through engaging methods like songs, storytelling, and interactive activities designed for their age group.

Is there a community for practicing the Lord's Prayer in sign language?

Yes, many communities and churches have groups or classes for practicing sign language, including religious prayers like the Lord's Prayer.

How does signing the Lord's Prayer enhance understanding?

Signing the Lord's Prayer can enhance understanding by providing a visual representation of the words, making it more accessible for those who are deaf or hard of hearing.

What resources are available for learning the Lord's Prayer in sign language?

Resources include online video platforms, sign language dictionaries, community classes, and religious organizations that offer training in sign language.

What impact does signing the Lord's Prayer have on

worship?

Signing the Lord's Prayer during worship can create an inclusive environment, allowing deaf and hearing individuals to participate fully in the prayer experience.

Find other PDF article:

<https://soc.up.edu.ph/14-blur/pdf?dataid=kxG78-1906&title=comparing-adaptations-of-birds-answers.pdf>

[Lords Prayer In Sign Language](#)

[Find a provider | PEEHIP | UnitedHealthcare](#)

Jun 4, 2025 · The UnitedHealthcare Group Medicare Advantage (PPO) - MAPD and UnitedHealthcare® Group Medicare Advantage-MA are PPO plans, which means you have lots of ...

PEEHIP Retirees | The Retirement Systems of Alabama

Jan 1, 2024 · If you are enrolled in the PEEHIP Hospital Medical Plan before becoming Medicare-eligible, PEEHIP will automatically change your coverage to the PEEHIP UnitedHealthcare Group ...

Sign in and registration | UnitedHealthcare

Ready to login or register for a health plan account? Find links for UnitedHealthcare's secure sites for members, employers, brokers or providers.

Login - UnitedHealthcare

Jul 13, 2023 · Login to access your UnitedHealthcare retiree health plan information.

Prior authorization and notification | UHCprovider.com

Prior authorization and advance notification resources and digital tools for providers and health care professionals from UnitedHealthcare.

UnitedHealth Group responds to Department of Justice investigation

4 days ago · UnitedHealth Group (the "Company") proactively reached out to the Department of Justice after reviewing media reports about investigations into certain aspects of the Company's ...

[UnitedHealth Group under DOJ investigation over Medicare](#)

4 days ago · UnitedHealth Group announced that it is under federal investigation looking into its Medicare Advantage (MA) plans, the privately run healthcare of the government's Medicare ...

UnitedHealth facing DOJ investigation over Medicare billing

5 days ago · UnitedHealth Group revealed it is facing Justice Department criminal and civil investigations over its Medicare billing practices, adding to a string of setbacks for a company ...

UnitedHealth Group Placed Under DOJ Investigation - Newsweek

4 days ago · UnitedHealth Group has said it is under investigation by the Department of Justice, which is probing its involvement in Medicare, a federal health insurance program for those over ...

Health Insurance in Retirement Frequently Asked Questions (FAQs)

A UAH Retirees are eligible for the Public Education Employees' Health Insurance Plan (PEEHIP) Hospital/Medical coverage effective on their date of retirement. The plan is governed by the ...

UnitedHealth Group Stock Sinks as Company Confirms DOJ ...

5 days ago · UnitedHealth Group on Thursday confirmed several reports in recent months that the Department of Justice is probing aspects of its business.

UnitedHealth Group Says It Is Cooperating With a DOJ ... - Gizmodo

4 days ago · UnitedHealth Group, the company that owns healthcare conglomerate UnitedHealth, said on Thursday that it is cooperating with the federal government as it fields criminal and civil ...

Public Education Employees' Health Insurance Plan | The ...

The Public Education Employees' Health Insurance Plan, or PEEHIP for short, was established in 1983 to provide quality healthcare insurance benefits for the health and well-being of our ...

Drug look-up | PEEHIP | UnitedHealthcare

Jun 4, 2025 · Search your plan's drug list (formulary) for prescription medications you might be taking.

Find a Provider | UnitedHealthcare Community Plan

Search our directory of network doctors and more including: specialists, hospitals, laboratories and X-ray centers.

2025 Plan Guide - rsa-al.gov

Jan 1, 2025 · With the PEEHIP UnitedHealthcare Group Medicare Advantage (PPO) plan, you get more The Public Education Employees' Health Insurance Plan (PEEHIP) has partnered with ...

UnitedHealthcare Community Plan of New Jersey Homepage

Resources (prior authorization, manuals, forms, news, and more) for UnitedHealthcare Community Plan of New Jersey Health Plans; FamilyCare; Dual Complete® ONE.

Group retiree solutions | Employer | UnitedHealthcare

Group Medicare Advantage plans UnitedHealthcare Retiree Solutions is a nationally recognized market leader in Group Medicare plans, providing employers and plan sponsors with tested, ...

Medicare-Eligible PEEHIP Members Things to Know About Your ...

Things to Know About Your Plan ♦ The PEEHIP UnitedHealthcare Medicare Advantage plan is a group Medicare Advantage plan that was specifically designed for you as a Medicare-eligible ...

Plan Guide 2024 - rsa-al.gov

Jan 1, 2024 · PEEHIP UnitedHealthcare® Group Medicare Advantage (PPO) plan Dear Medicare-eligible PEEHIP Retiree, The Public Education Employees' Health Insurance Plan (PEEHIP) has ...

Charles Hale - HR Manager - UnitedHealth Group | LinkedIn

HR Manager at UnitedHealth Group · Experience: UnitedHealth Group · Education: New Jersey City University · Location: North Bergen · 1 connection on LinkedIn. View Charles Hale's profile on ...

UnitedHealth Group (UNH) Responds to the Department of ...

UnitedHealth Group Incorporated (NYSE:UNH) is one of the top low volatility healthcare stocks to buy now. On July 24, UnitedHealth Group Incorporated (NYSE:UNH) released a statement ...

Eden Prairie-based UnitedHealth cooperating with DOJ investigation

4 days ago · UnitedHealth Group said Thursday it is cooperating with a U.S. Department of Justice investigation into its Medicare business, reversing its previous denials of a probe.

UnitedHealth Group | History, Growth, & Controversies

2 days ago · UnitedHealth Group, formed in 1974, is the largest insurance provider in the United States. The company is split into two brands: UnitedHealth and Optum.

UnitedHealth says it is under a federal investigation and ... - PBS

4 days ago · Shares of UnitedHealth Group slipped Thursday after the health care giant said it was under a Department of Justice investigation. The company said it has started complying with ...

UnitedHealth Group under federal investigation, company says in ...

4 days ago · UnitedHealth under federal investigation, company says in filing The company in an SEC filing said it was complying with DOJ requests.

UnitedHealth says it is under a federal investigation

4 days ago · UnitedHealth Group says it is cooperating with federal criminal and civil investigations involving its market-leading Medicare business.

UnitedHealth Group - Wikipedia

UnitedHealth Group Incorporated is a healthcare company based in Eden Prairie, Minnesota. Selling insurance products under UnitedHealthcare, and health care services under the Optum brand, it ...

United Healthcare Office Address | Finding reliable health ...

discover United Healthcare Office Address. Find articles on fitness, diet, nutrition, health news headlines, medicine, diseases

UnitedHealth says it is under a federal investigation and cooperating

5 days ago · UnitedHealth Group says it is cooperating with federal criminal and civil investigations involving its market-leading Medicare business. The health care giant said Thursday that it had ...

What Analysts Think of UnitedHealth Group Stock Ahead of ...

15 hours ago · UnitedHealth Group is scheduled to report second-quarter results on Tuesday morning, capping a tumultuous first half of the year for the health insurance giant.

Welcome PEEHIP Retirees to UnitedHealthcare - rsa-al.gov

As a reminder and resulting from the most recent competitive professional service procurement cycle, effective January 1, 2023, UnitedHealthcare® will administer the Group Medicare ...

Frequently asked questions - rsa-al.gov

PEEHIP has chosen a UnitedHealthcare Group Medicare Advantage plan. The word "Group" means this is a plan designed just for PEEHIP. Only eligible PEEHIP retirees and their eligible dependents ...

Insights into UnitedHealth Group's Upcoming Earnings

22 hours ago · UnitedHealth Group UNH is set to give its latest quarterly earnings report on Tuesday, 2025-07-29. Here's what investors need to know before the announcement. Analysts ...

QUERY - Справка - Редакторы Google Документов

Выполняет запросы на базе языка запросов API визуализации Google. Пример использования

QUERY (A2:E6; "select avg (A) pivot B") QUERY (A2:E6; F2; ЛОЖЬ) ...

QUERY function - Google Docs Editors Help

QUERY(A2:E6,F2,FALSE) Syntax QUERY(data, query, [headers]) data - The range of cells to perform the query on. Each column of data can only hold boolean, numeric (including ...








Función QUERY - Ayuda de Editores de Documentos de Google

Función QUERY Ejecuta una consulta sobre los datos con el lenguaje de consultas de la API de visualización de Google. Ejemplo de uso QUERY(A2:E6,"select avg(A) pivot B") ...

QUERY - Google Visualization API Query Language
QUERY (A2:E6,"select avg (A) pivot B") QUERY (A2:E6,F2,FALSE) ...

QUERY - Google

QUERY Google Visualization API QUERY(A2:E6,"select avg(A) pivot B") QUERY(A2:E6,F2,FALSE) ...

QUERY - Google 
 QUERY(A2:E6,F2,FALSE)  QUERY(, , [])  -  Each column of data can only hold boolean, numeric (including date/time types) or string ...

[video] [\[GOOGLE SHEETS\] FUNCIÓN QUERY: FUNCIONES DE ...](#)
Ver en [\[GOOGLE SHEETS\] FUNCIÓN QUERY: FUNCIONES DE AGREGACIÓN: SUM, AVG, COUNT, MIN y MAX](#) 652 visualizaciones 4 votos a favor

QUERY - **Google Docs**

query: `[[{"Year": 2008, "Country": "United States", "Share": 67}, {"Year": 2009, "Country": "United States", "Share": 67}, {"Year": 2010, "Country": "United States", "Share": 67}, {"Year": 2011, "Country": "United States", "Share": 67}, {"Year": 2012, "Country": "United States", "Share": 67}, {"Year": 2013, "Country": "United States", "Share": 67}, {"Year": 2014, "Country": "United States", "Share": 67}, {"Year": 2015, "Country": "United States", "Share": 67}, {"Year": 2016, "Country": "United States", "Share": 67}, {"Year": 2017, "Country": "United States", "Share": 67}, {"Year": 2018, "Country": "United States", "Share": 67}, {"Year": 2019, "Country": "United States", "Share": 67}, {"Year": 2020, "Country": "United States", "Share": 67}, {"Year": 2021, "Country": "United States", "Share": 67}, {"Year": 2022, "Country": "United States", "Share": 67}, {"Year": 2008, "Country": "Germany", "Share": 60}, {"Year": 2009, "Country": "Germany", "Share": 60}, {"Year": 2010, "Country": "Germany", "Share": 60}, {"Year": 2011, "Country": "Germany", "Share": 60}, {"Year": 2012, "Country": "Germany", "Share": 60}, {"Year": 2013, "Country": "Germany", "Share": 60}, {"Year": 2014, "Country": "Germany", "Share": 60}, {"Year": 2015, "Country": "Germany", "Share": 60}, {"Year": 2016, "Country": "Germany", "Share": 60}, {"Year": 2017, "Country": "Germany", "Share": 60}, {"Year": 2018, "Country": "Germany", "Share": 60}, {"Year": 2019, "Country": "Germany", "Share": 60}, {"Year": 2020, "Country": "Germany", "Share": 60}, {"Year": 2021, "Country": "Germany", "Share": 60}, {"Year": 2022, "Country": "Germany", "Share": 60}, {"Year": 2008, "Country": "France", "Share": 55}, {"Year": 2009, "Country": "France", "Share": 55}, {"Year": 2010, "Country": "France", "Share": 55}, {"Year": 2011, "Country": "France", "Share": 55}, {"Year": 2012, "Country": "France", "Share": 55}, {"Year": 2013, "Country": "France", "Share": 55}, {"Year": 2014, "Country": "France", "Share": 55}, {"Year": 2015, "Country": "France", "Share": 55}, {"Year": 2016, "Country": "France", "Share": 55}, {"Year": 2017, "Country": "France", "Share": 55}, {"Year": 2018, "Country": "France", "Share": 55}, {"Year": 2019, "Country": "France", "Share": 55}, {"Year": 2020, "Country": "France", "Share": 55}, {"Year": 2021, "Country": "France", "Share": 55}, {"Year": 2022, "Country": "France", "Share": 55}]]`

[GOOGLE SHEETS] FUNCIÓN QUERY: USO DE LA CLÁUSULA SELECT

[GOOGLE SHEETS] FUNCIÓN QUÉRY: USO DE LA CLÁUSULA SELECT Compartir Si la reproducción no empieza en breve, prueba a reiniciar el dispositivo. Los vídeos que veas ...

BigQuery - Google Cloud Platform Console Help

Use datasets to organize and control access to tables, and construct jobs for BigQuery to execute (load, export, query, or copy data). Find BigQuery in the left side menu of the Google Cloud ...

Discover how to express the Lords Prayer in sign language with our step-by-step guide. Enhance your communication skills and deepen your faith. Learn more!

[Back to Home](#)