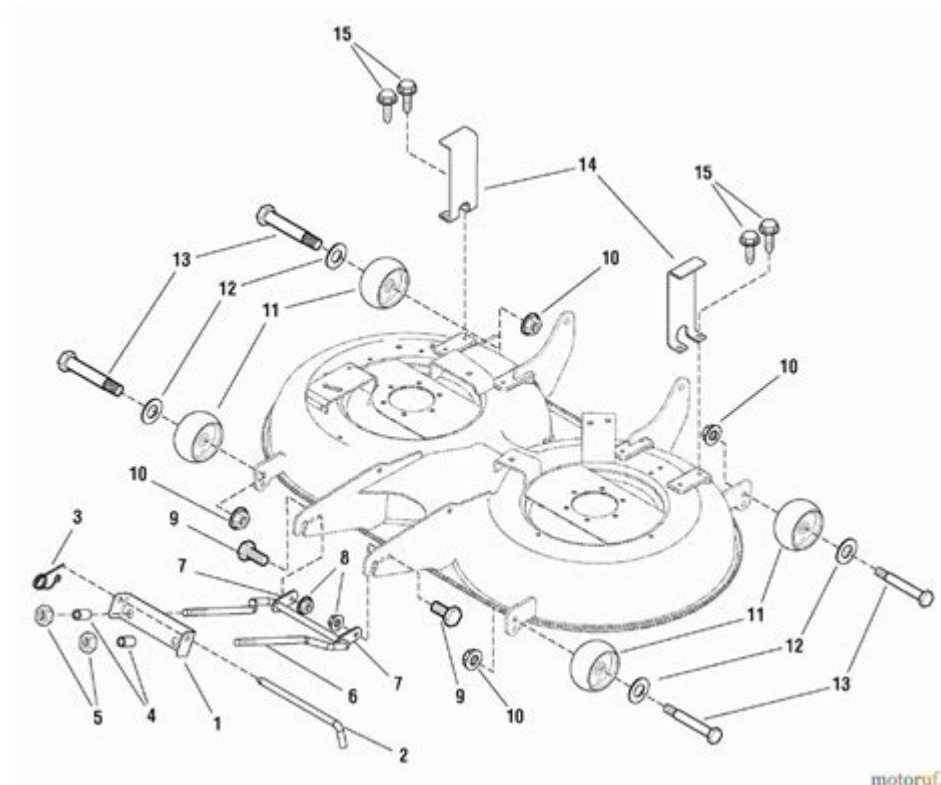


# LS Tractor Parts Diagram



LS tractor parts diagram is an essential tool for any tractor owner, operator, or mechanic. Understanding the different components and their arrangement can greatly enhance one's ability to maintain and repair LS tractors effectively. LS Tractors, known for their reliability and performance, are equipped with various parts that work harmoniously to provide optimal functionality. This article will delve into the importance of the parts diagram, the various components of LS tractors, and how to use this information for better maintenance and repair.

## Understanding LS Tractors

LS Tractors are manufactured by LS Mtron, a South Korean company that has made a name for itself in the agricultural and construction equipment industry. These tractors are known for their durability, comfort, and powerful engines. They cater to a variety of tasks, from farming to landscaping and even light construction work. Understanding the parts and their functions is crucial for maximizing the performance and longevity of these machines.

## Importance of a Parts Diagram

A parts diagram is a visual representation of the components of a tractor, typically divided into sections for

clarity. This diagram is invaluable for several reasons:

1. **Identification and Reference:** It allows users to identify different parts quickly, making it easier to find specific components when ordering replacements or conducting repairs.
2. **Simplified Maintenance:** By understanding how parts are organized, operators can perform regular maintenance more efficiently, reducing downtime.
3. **Troubleshooting:** A clear diagram aids in diagnosing issues by allowing operators to trace problems back to specific components.
4. **Guidance for Repairs:** Step-by-step visual references can guide users through disassembly and assembly processes, ensuring that repairs are done correctly.

## Key Components of LS Tractors

To fully appreciate the LS tractor parts diagram, it's essential to know the main components that make up an LS tractor. Here's a breakdown of some key parts:

### 1. Engine

The engine is the heart of the tractor, providing the power needed for all operations. Common engine components include:

- **Pistons:** Convert fuel into mechanical energy.
- **Crankshaft:** Transforms linear motion into rotational motion.
- **Valves:** Regulate fuel and air intake and exhaust.
- **Fuel Injectors:** Deliver precise amounts of fuel to the engine.

### 2. Transmission System

The transmission system is critical for controlling the speed and torque of the tractor. Key elements include:

- **Gearbox:** Allows for changes in speed and direction.
- **Clutch:** Engages and disengages the engine from the transmission.
- **Drive Shaft:** Transfers power from the engine to the wheels.

### **3. Hydraulic System**

The hydraulic system manages the lifting and lowering of attachments. Important components include:

- Hydraulic Pump: Generates hydraulic pressure.
- Hydraulic Cylinders: Convert hydraulic energy into mechanical movement.
- Valves: Control the flow of hydraulic fluid.

### **4. Electrical System**

The electrical system powers the tractor's ignition, lights, and electronic controls. Key components include:

- Battery: Provides the necessary power to start the engine.
- Alternator: Charges the battery while the engine runs.
- Wiring Harness: Connects electrical components.

### **5. Chassis and Frame**

The chassis provides the structural support for the tractor. It includes:

- Frame: The main structure that supports all other components.
- Suspension: Absorbs shocks and improves ride comfort.
- Wheels and Tires: Provide traction and stability.

## **How to Use an LS Tractor Parts Diagram**

To effectively utilize an LS tractor parts diagram, follow these steps:

### **1. Obtain the Correct Diagram**

Ensure you have the correct parts diagram for your specific LS tractor model. Different models may have variations in parts layout and design.

## **2. Familiarize Yourself with the Diagram**

Spend some time studying the diagram. Identify the major sections and components. Most diagrams will be color-coded or labeled to enhance clarity.

## **3. Identify Parts When Needed**

When you need to replace a part or conduct maintenance, refer to the diagram to locate the specific component. This helps in ordering the correct part and ensures you have all necessary tools on hand.

## **4. Follow Step-by-Step Instructions for Repairs**

If you're undertaking repairs, use the diagram to guide you through the disassembly and assembly process. Follow these general steps:

- Turn Off Power: Ensure the tractor is off and, if necessary, disconnect the battery.
- Remove the Necessary Components: Use the diagram to identify which parts need to be removed first to access the faulty part.
- Replace or Repair the Component: Use the diagram to ensure you are installing the new part correctly.
- Reassemble the Tractor: Follow the reverse order of disassembly as indicated in the diagram.

## **Common LS Tractor Parts and Their Costs**

Understanding the common parts and their costs can help in budgeting for maintenance and repairs. Here are some frequently needed LS tractor parts:

### **1. Engine Components**

- Piston Kit: \$250 - \$500
- Fuel Injector: \$100 - \$300
- Oil Filter: \$15 - \$50

## 2. Transmission Parts

- Clutch Kit: \$300 - \$600
- Transmission Oil Filter: \$20 - \$40
- Gearbox Assembly: \$1,000 - \$3,000

## 3. Hydraulic Parts

- Hydraulic Pump: \$150 - \$500
- Hydraulic Cylinder: \$100 - \$400
- Hydraulic Hose: \$10 - \$50

## 4. Electrical Components

- Battery: \$100 - \$250
- Alternator: \$150 - \$400
- Starter Motor: \$100 - \$300

## 5. Body and Chassis Parts

- Frame Assembly: \$500 - \$2,000
- Tires: \$100 - \$600 each
- Seat Replacement: \$100 - \$300

## Where to Find LS Tractor Parts Diagrams

Finding reliable parts diagrams is crucial for effective maintenance. Here are some resources:

1. Official LS Tractor Website: The manufacturer's site often provides downloadable parts manuals.
2. Service Manuals: Purchase or download service manuals that contain detailed parts diagrams.
3. Online Forums and Communities: Engage with other LS tractor owners who may share diagrams and tips.
4. Local Dealers: Visit or contact authorized LS tractor dealers for parts diagrams and advice.

# Conclusion

The LS tractor parts diagram is an indispensable resource for anyone who owns or operates these reliable machines. By understanding the components and effectively utilizing the diagram, users can perform maintenance and repairs with confidence. Whether you are an experienced mechanic or a novice owner, knowing how to navigate these diagrams will lead to better care for your LS tractor, ensuring it remains a powerful ally in your agricultural or construction endeavors. With the right knowledge and tools, you can keep your tractor running smoothly for years to come.

## Frequently Asked Questions

### What is an LS tractor parts diagram?

An LS tractor parts diagram is a detailed illustration that shows the various components and parts of an LS tractor, helping users identify and locate specific parts for maintenance or repair.

### Where can I find an LS tractor parts diagram?

You can find LS tractor parts diagrams on the official LS Tractor website, in user manuals, or through authorized LS dealers and service centers.

### Why is a parts diagram important for LS tractor maintenance?

A parts diagram is important for LS tractor maintenance as it provides a clear visual reference for identifying parts, facilitating repairs, and ordering the correct components.

### How do I read an LS tractor parts diagram?

To read an LS tractor parts diagram, familiarize yourself with the symbols and labels used, then match them to the physical components on the tractor to understand their layout and function.

### Can I get a digital version of the LS tractor parts diagram?

Yes, many LS tractor parts diagrams are available in digital format as PDFs or interactive diagrams on various online platforms, including the LS Tractor website.

### Are LS tractor parts diagrams the same for all models?

No, LS tractor parts diagrams vary by model, so it's important to refer to the specific diagram that corresponds to your tractor's model number.

## What should I do if I can't find the LS tractor parts diagram I need?

If you can't find the LS tractor parts diagram you need, contact your local LS dealer or customer service for assistance, or check online forums and communities for help.

## Is there a cost associated with obtaining an LS tractor parts diagram?

Most LS tractor parts diagrams are available for free through official channels, but some detailed service manuals may incur a fee.

## How often should I refer to the LS tractor parts diagram?

You should refer to the LS tractor parts diagram whenever you perform maintenance, repairs, or replacements to ensure you're working with the correct components.

## Can I use an LS tractor parts diagram for troubleshooting?

Yes, an LS tractor parts diagram can be very helpful for troubleshooting as it allows you to identify parts that may be malfunctioning or require inspection.

Find other PDF article:

<https://soc.up.edu.ph/38-press/pdf?dataid=Llw49-3632&title=lucky-luke-and-the-daltons.pdf>

## LS Tractor Parts Diagram

LS-DYNA\*\*\*CONTROL\_ALE\_\*\*\*\*

Sep 27, 2024 · LS-DYNA\*\*\*CONTROL\_ALE\*\*\*\*\*LS-DYNA\*\*\*\*\*CONTROL\_ALE\*\*\*\*\*  
\*\*\*\*\*CONTROL\_ALE\*\*\*\* ...

LS-PREPOST\*\*\*\*\* - \*\*\*\*

Dec 11, 2024 · LS-PREPOST\*\*\*\*\*D:\Program Files\ANSYS Inc\v120\ansys\bin\intel\*\*\*\*\*  
LS-PREPOST\*\*\*\*\* ...

LS (\*\*) - \*\*\*\*

Dec 20, 2024 · LS (\*\*)\*\*\*\*\*LG\*\*\*2003\*\*\*\*\*LG\*\*\*LS\*\*\*GS\*\*\* LS\*\*\*\*\*  
\*\*\*\*\* ...

l/s\*\*\*\*\*m3/h - \*\*\*\*

Jun 26, 2024 · l/s\*\*\*\*\*m3/hl/s\*\*\*\*\*m³/h1. \*\*\*\*\*l/sm³/h\*\*\*\*\*l/s\*\*\*\*\*1 ...

2k25\*\*\*\*\* - \*\*\*\*

2k25\*\*\*\*\* 2k25\*\*\*\*\*WASD\*\*\*\*\*  
\*\*\*\*\* ...

ls-magazine\_

Oct 1, 2024 · ls-magazinels-magazinels-magazinels-magazinels-magazine ...

(r=ls) -

Mar 23, 2025 · (r=ls)R=LS ...

RSRTLTLS\_

RSRTLTLSRTRBLTRTLSRS ...

PSPCPALRLS...

Aug 29, 2018 · PS:; Project StartsPC:; Project ConfirmationPA:; Project ApprovalLR:; Launch ReadinessLS:; Launch Signature ...

...

Jun 6, 2013 · LIAS,LIT,XV,PIA,PIT,FIQ,FIT,FIQC,AI,AIT,PA,PS,PI,LA,LS,TIS,TITPI PT ...

LS-DYNA\*CONTROL\_ALE\_

Sep 27, 2024 · LS-DYNA\*CONTROL\_ALELS-DYNA\*CONTROL\_ALE ...

LS-PREPOST -

Dec 11, 2024 · LS-PREPOSTD:\Program Files\ANSYS Inc\v120\ansys\bin\intelLS-PREPOST ...

LS ( ) -

Dec 20, 2024 · LS ( )LG2003LGLSGS LS ...

l/sm3/h -

Jun 26, 2024 · l/sm3/hl/sm<sup>3</sup>/h1. l/sm<sup>3</sup>/hl/sm<sup>3</sup>/h1 ...

2k25 -

2k252k25WASD ...

ls-magazine\_

Oct 1, 2024 · ls-magazinels-magazinels-magazinels-magazine ...

(r=ls) -

Mar 23, 2025 · (r=ls)R=LS ...

RSRTLTLS\_

RSRTLTLSRTRBLTRTLSRS ...



PS PC PA LR LS

Aug 29, 2018 · PS: ; Project Starts PC: ; Project Confirmation PA: ; Project Approval LR: ; Launch Readiness LS: ; Launch Signature ...

...

Jun 6, 2013 · LIAS,LIT,XV,PIA,PIT,FIQ,FIT,FIQC,AI,AIT,PA,PS,PI,LA,LS,TIS,TITPI  
PT ...

Explore our comprehensive LS tractor parts diagram to identify and understand your tractor components. Learn more for expert tips and maintenance insights!

[Back to Home](#)