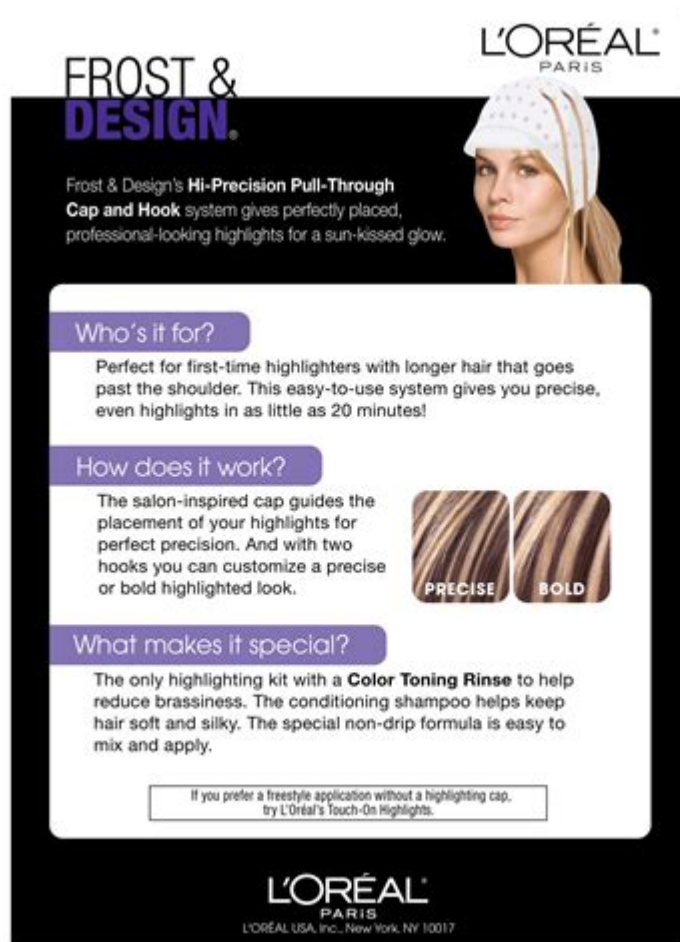


# Loreal Frost And Design Instructions



## L'Oreal Frost and Design Instructions

When it comes to enhancing your hair color and achieving stunning highlights, L'Oreal Frost and Design is a popular choice among both professionals and DIY enthusiasts. This product allows users to create customized highlights while providing a straightforward application process. In this article, we will delve into the details of L'Oreal Frost and Design, including its formula, benefits, application instructions, aftercare, and tips for achieving the best results.

## Understanding L'Oreal Frost and Design

L'Oreal Frost and Design is a highlighting kit designed to give your hair natural-looking highlights without the need for professional salon visits. The kit includes a highlighting powder, a developer, an applicator comb, and various tools to help you achieve the perfect look. Its unique formula is designed to work on all hair types, making it a versatile option for anyone looking to brighten their hair color.

# Benefits of Using L'Oreal Frost and Design

Using L'Oreal Frost and Design offers numerous advantages, including:

- Customizable Highlights: You can choose how subtle or bold you want your highlights to be, allowing for a personalized look.
- Easy Application: The kit comes with an applicator comb and instructions that make it accessible for beginners.
- Versatility: Suitable for various hair types and colors, it can be used on both natural and color-treated hair.
- Cost-Effective: Achieve salon-quality results at home without the hefty price tag.

## Preparing for Application

Before you start the highlighting process, proper preparation is key to ensuring the best results.

## Gather Your Supplies

To begin, make sure you have the following items ready:

1. L'Oreal Frost and Design kit
2. Old towel or cape to protect your clothing
3. Comb and hair clips
4. Timer
5. Gloves (usually included in the kit)
6. Plastic wrap (optional, to cover highlighted sections)
7. Hairdryer (for quicker drying, optional)

## Choose Your Highlighting Technique

L'Oreal Frost and Design allows for several highlighting techniques, including:

- Traditional Foiling: Use foils to separate sections of hair for more defined highlights.
- Balayage: Apply highlights freehand for a more natural, sun-kissed look.
- Cap Highlighting: Use the provided cap to pull strands through for an even distribution of highlights.

Consider what look you want to achieve before beginning.

## Step-by-Step Application Instructions

Follow these steps for a successful highlighting experience with L'Oreal Frost and Design:

## 1. Prepare Your Hair

- Start with clean, dry hair. It's best to wait at least 24 to 48 hours after washing to apply the highlights, as this allows your scalp's natural oils to protect against irritation.
- Detangle your hair thoroughly and section it into manageable parts. You can use hair clips to secure sections you're not working on.

## 2. Mix the Highlighting Formula

- Put on the provided gloves to protect your hands.
- In a non-metallic bowl, mix the highlighting powder with the developer according to the instructions provided in the kit. Be sure to mix until you achieve a smooth, creamy consistency.

## 3. Apply the Highlighting Mixture

- Using the applicator comb, start applying the mixture to the sections of hair you wish to highlight. If you are using foils, place the foil underneath the hair, apply the mixture on top, and then fold the foil over to secure it in place.
- For cap highlighting, place the cap on your head and use the hook provided in the kit to pull strands of hair through the holes in the cap. Apply the mixture to the exposed strands.

## 4. Timing is Essential

- Set a timer according to the instructions on the kit. The processing time can vary based on your desired level of lightness and your hair's starting color.
- Check your hair every few minutes to ensure you're achieving the desired look without over-processing.

## 5. Rinse and Condition

- Once the desired processing time has been reached, rinse your hair thoroughly with lukewarm water until the water runs clear.
- Apply the included conditioner (if provided) or a deep conditioner to help restore moisture and shine to your hair. Leave it on for the recommended time before rinsing.

## Aftercare for Highlighted Hair

Once you've successfully highlighted your hair, it's essential to maintain its health and vibrancy.

## **1. Use Color-Safe Products**

- Invest in shampoos and conditioners formulated for color-treated hair. These products will help preserve your highlights and prevent fading.

## **2. Limit Heat Styling**

- Minimize the use of heat styling tools like flat irons and curling wands. If you must use them, apply a heat protectant to shield your hair from damage.

## **3. Regular Deep Conditioning Treatments**

- Incorporate deep conditioning treatments into your hair care routine to keep your hair hydrated and nourished.

## **4. Schedule Touch-Ups**

- Depending on how quickly your hair grows and how pronounced you want your highlights to remain, plan for touch-ups every 6-8 weeks.

## **Tips for Achieving the Best Results**

To enhance your experience with L'Oreal Frost and Design, consider the following tips:

- Do a Strand Test: Before applying the mixture all over, do a strand test on a small section of hair to see how it reacts to the product.
- Consult a Professional if Unsure: If you're uncertain about the process or your desired look, don't hesitate to consult with a professional hairstylist.
- Keep It Natural: For a more natural look, avoid highlighting the roots too heavily; instead, focus on mid-lengths and ends.
- Be Patient: Rushing through the application process can lead to uneven results. Take your time to ensure an even application.

## **Conclusion**

L'Oreal Frost and Design is an excellent choice for anyone seeking to add highlights to their hair from the comfort of their home. With its user-friendly instructions and versatile application techniques, it offers a cost-effective way to achieve salon-quality results. By following the steps outlined in this article and maintaining proper aftercare, you can enjoy beautiful, vibrant highlights that enhance your natural beauty. Whether you opt for bold streaks or soft, sun-kissed strands,

L'Oreal Frost and Design can help you achieve the look you desire.

## **Frequently Asked Questions**

### **What is L'Oreal Frost and Design used for?**

L'Oreal Frost and Design is a highlighting kit designed to create beautiful, natural-looking highlights on hair, providing a salon-quality finish at home.

### **How do I prepare my hair before using L'Oreal Frost and Design?**

Before using L'Oreal Frost and Design, ensure your hair is clean and dry. It's also recommended to do a strand test to determine the desired color and processing time.

### **What tools are needed for applying L'Oreal Frost and Design?**

You will need the L'Oreal Frost and Design kit, a plastic mixing bowl, a tinting brush, plastic gloves, and a shower cap or plastic wrap to cover your hair during processing.

### **How long should I leave the L'Oreal Frost and Design mixture on my hair?**

The recommended processing time is typically between 20 to 40 minutes, depending on your hair type and the desired lightness. Always check your hair every 10 minutes.

### **Can I use L'Oreal Frost and Design on previously colored hair?**

Yes, you can use L'Oreal Frost and Design on previously colored hair, but it's advisable to do a strand test first to see how the new highlights will blend with your current color.

### **What aftercare should I follow after using L'Oreal Frost and Design?**

After rinsing out the product, use a color-safe shampoo and conditioner to maintain the vibrancy of your highlights. It's also beneficial to use a deep conditioning treatment weekly.

Find other PDF article:

<https://soc.up.edu.ph/66-gist/pdf?dataid=nrQ69-5696&title=what-is-the-stand-your-ground-law-in-te-xas.pdf>

## **Loreal Frost And Design Instructions**

**LOREAL** -

2011 1 ...

? -

cosme ...

**LOREAL** -

Jan 14, 2021 · LOREAL 16-30g/mL

...

365 ...

+ + ...

Aug 30, 2019 · ...

- **L'Oréal Campreneur** 2024

May 6, 2021 · Loreal\_HR ...

2020 - ...

Feb 24, 2020 · 2020 ...

(e-Strat) 2024 - ...

Aug 11, 2009 · (e-Strat)2024 (e-Strat)2024 ...

5.21 supply chain hr -

May 23, 2020 · supply chain hr23 25 ...

-

300 2 LOREAL ...

**LOREAL** -

2011 1 ...

? -

cosme ...

**LOREAL** -

Jan 14, 2021 · LOREAL 16-30g/mL

...  
...  
...

365...  
...

...+...+...

Aug 30, 2019 · ...  
...

- **L'Oréal Campreneur 2024**...

May 6, 2021 · : Loreal\_HR ...  
...

2020... - ...

Feb 24, 2020 · 2020...  
...

(e-Strat) 2024... - ...

Aug 11, 2009 · (e-Strat)2024... (e-Strat)2024...  
...

**5.21 supply chain hr** - ...

May 23, 2020 · supply chainhr23...25...  
supply chain/mkt ...

... - ...

300... 2...LOREAL...  
...

Unlock your creativity with our L'Oreal Frost and Design instructions. Discover how to achieve stunning highlights at home. Learn more for expert tips!

[Back to Home](#)