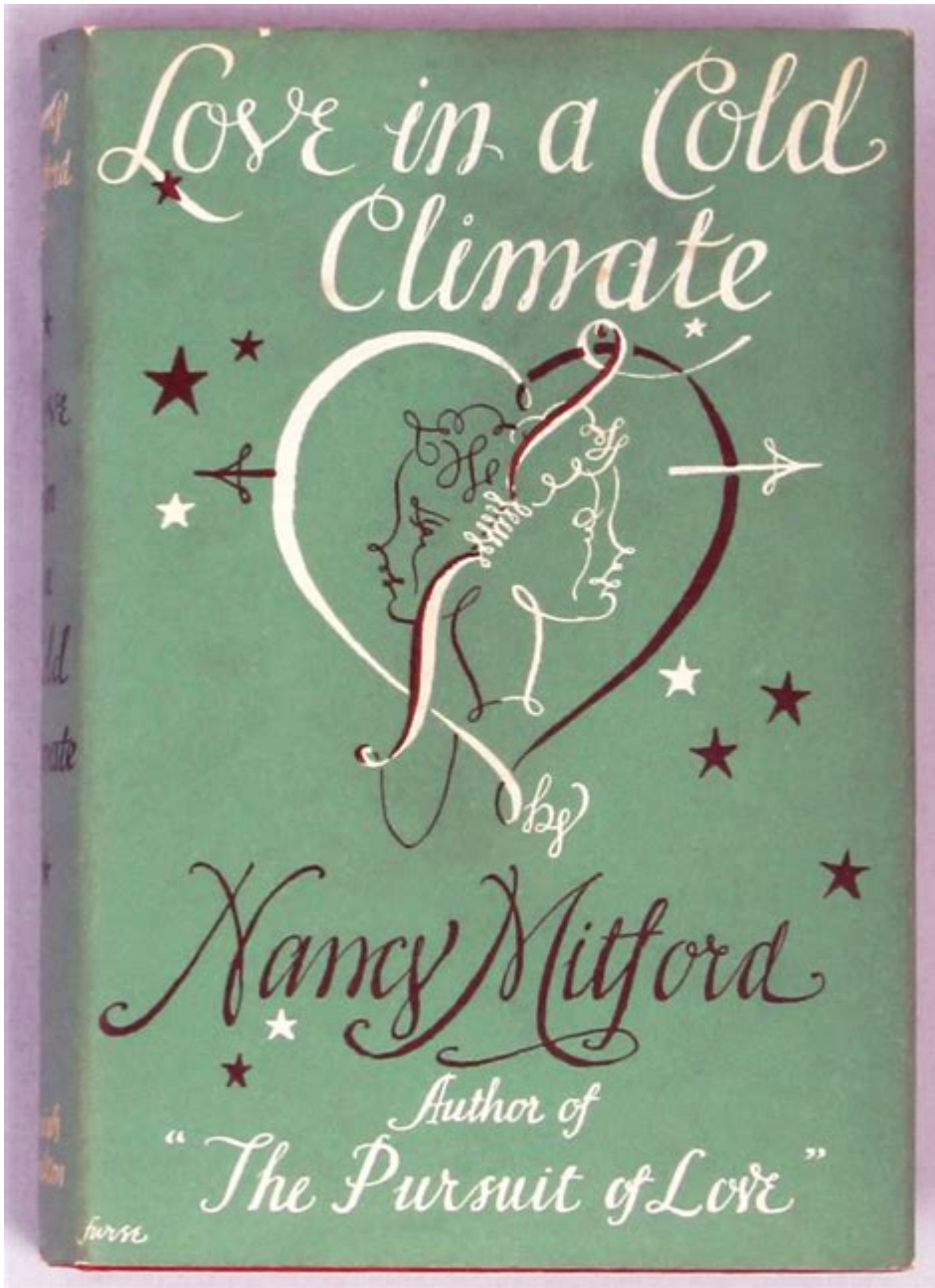


Love In A Cold Climate Nancy Mitford



Love in a Cold Climate is a novel by Nancy Mitford, first published in 1949. It is celebrated for its sharp wit, social observations, and the portrayal of British aristocracy during the interwar period. As the second book in Mitford's series of novels about the fictional Radlett family, it explores themes of love, class, and the complexities of human relationships against a backdrop of a chilly English countryside. This article delves into the plot, characters, themes, and the broader context of the novel, highlighting the enduring relevance of Mitford's work.

Plot Overview

At the heart of **Love in a Cold Climate** is the story of Fanny Logan, a young woman who becomes

entwined with the fortunes of the Radlett family. The narrative unfolds through Fanny's perspective as she navigates the complexities of love and social expectations.

Fanny is invited to stay with the Radletts, where she meets the independent and headstrong Linda Radlett. The Radlett family, particularly the eccentric and domineering Aunt Sadie, adds layers of humor and drama as they engage in various romantic escapades. The primary plot revolves around Linda's tumultuous love life, particularly her passionate yet problematic relationship with the dashing but irresponsible actor, Alfred.

As Fanny observes the dynamics of love and loyalty among the Radletts, she also experiences her own romantic entanglements, which reflect the broader societal changes of the time. The novel captures the tension between personal desires and societal expectations, creating a rich tapestry of relationships that resonate with readers.

Character Analysis

The characters in **Love in a Cold Climate** are vividly drawn, each contributing to the exploration of love and social status. Here are some of the key figures:

- **Fanny Logan:** The narrator and central character, Fanny represents the voice of reason amidst the Radletts' chaos. Her observations provide insight into the lives of the upper class while revealing her own insecurities and aspirations.
- **Linda Radlett:** Fanny's best friend, Linda is passionate, beautiful, and rebellious. Her quest for love leads her through a series of misguided relationships, encapsulating the romantic idealism and disillusionment of youth.
- **Alfred:** The charming but irresponsible actor who captures Linda's heart. His character serves as a critique of romantic notions that prioritize passion over stability.
- **Aunt Sadie:** The eccentric matriarch of the Radlett family, Aunt Sadie is both a source of comic relief and a representation of the old guard of aristocracy. Her views on marriage and propriety reflect the values of her generation.
- **Other Radlett Family Members:** The various cousins and relatives provide a satirical lens on the British upper class, each embodying different aspects of society's expectations regarding love and marriage.

Thematic Exploration

Love in a Cold Climate explores several themes that resonate deeply with readers, including:

1. The Nature of Love

The novel delves into different types of love, from passionate and romantic to familial and platonic. Mitford illustrates how love can be both uplifting and destructive. Linda's infatuation with Alfred is contrasted with the more stable relationships of other characters, prompting readers to question the true nature of love.

2. Class and Society

Mitford's depiction of the British aristocracy is both humorous and critical. The characters' lives are defined by their social status, and their romantic choices often reflect societal pressures. The novel critiques the rigid class structures of the time, as well as the absurdities and intricacies of upper-class life.

3. Gender Roles

The novel also addresses the expectations placed on women in the post-war period. Linda's struggles to assert her independence in a male-dominated society highlight the limitations faced by women. Through Fanny's lens, Mitford critiques these gender norms while celebrating the resilience of women seeking autonomy.

4. Irony and Satire

Mitford's use of irony and satire is a hallmark of her writing style. The characters often find themselves in comically absurd situations that reveal deeper truths about love and society. This satirical edge serves to entertain while prompting reflection on serious themes.

Context and Impact

When **Love in a Cold Climate** was published, it emerged from a unique historical context. The aftermath of World War II brought significant social changes, including shifts in class dynamics and gender roles. Mitford's portrayal of the British aristocracy serves as both a nostalgic look back at a bygone era and a critical commentary on its relevance in a rapidly changing world.

Nancy Mitford herself belonged to the upper class, experiencing firsthand the privileges and absurdities of her social circle. Her insider's perspective lends authenticity to her characters and their experiences. The novel's wit and humor have made it a favorite among readers, and it continues to be studied for its social commentary and characterizations.

Reception and Legacy

Upon its release, **Love in a Cold Climate** received mixed reviews, but it has since become a classic of English literature. Mitford's writing style, characterized by its sharp wit and keen observations, has garnered a devoted readership. The novel has influenced subsequent generations of writers and remains an essential text for those exploring themes of love, class, and identity.

The book's enduring appeal lies in its ability to blend humor with poignant social critique. Readers are drawn to the relatable struggles of the characters, who navigate the complexities of love while grappling with the expectations of their society.

Conclusion

In conclusion, **Love in a Cold Climate** by Nancy Mitford is a rich exploration of love, class, and societal expectations. Through the lens of the Radlett family, Mitford presents a vivid portrayal of British aristocracy in the mid-20th century. The novel's themes of love's dualities, gender roles, and social satire remain relevant today, inviting readers to reflect on their own experiences of love and societal pressures. As such, it stands as a significant work in the canon of English literature, showcasing Mitford's unique voice and sharp wit. Whether read for its humor, its social commentary, or its exploration of love, this novel continues to resonate, offering insights that transcend time and class.

Frequently Asked Questions

What are the main themes explored in 'Love in a Cold Climate' by Nancy Mitford?

The main themes in 'Love in a Cold Climate' include the complexities of love, social class, and the contrast between romantic ideals and reality. The novel also explores family dynamics and the impact of societal expectations on personal relationships.

How does Nancy Mitford use humor in 'Love in a Cold Climate'?

Nancy Mitford employs wit and satire to depict the absurdities of upper-class British society. Her humorous characterizations and ironic situations highlight the superficiality of social norms and the often ludicrous nature of romantic pursuits.

What role does setting play in 'Love in a Cold Climate'?

The setting, primarily in the English countryside, serves to illustrate the isolation and emotional coldness that contrasts with the characters' desires for love and connection. The cold climate metaphorically reflects the emotional barriers faced by the characters.

Who are the key characters in 'Love in a Cold Climate' and what are their relationships?

Key characters include Polly, a young woman navigating her romantic aspirations, and her mother, who represents traditional views on love and marriage. The relationships between characters often reveal generational conflicts and differing attitudes towards love and societal expectations.

How does 'Love in a Cold Climate' compare to Nancy Mitford's other works?

Like her other works, 'Love in a Cold Climate' features Mitford's trademark blend of comedy and social commentary. However, this novel places a stronger emphasis on romantic entanglements and the challenges of love within the constraints of the British class system, making it a more focused exploration of these themes.

Find other PDF article:

<https://soc.up.edu.ph/63-zoom/Book?docid=Jjs91-7371&title=twisted-games-ana-huang-ebook.pdf>

Love In A Cold Climate Nancy Mitford

iLovePDF | Online PDF tools for PDF lovers

iLovePDF is an online service to work with PDF files completely free and easy to use. Merge PDF, split PDF, compress PDF, office to PDF, PDF to JPG and more!

Login - iLovePDF

Inicia sesión en iLovePDF para acceder a todas las herramientas y funciones de PDF.

iLovePDF, acceso a tu cuenta

Accede a tu cuenta de iLovePDF para disfrutar de más prestaciones: más MB, más archivos al mismo tiempo, ver las últimas imágenes procesadas y muchas más características.

PDF to WORD | Convert PDF to Word online for free - iLovePDF

Convert PDF to editable Word documents for free. PDF to Word conversion is fast, secure and almost 100% accurate. Convert scanned PDF to DOC keeping the layout.

Edit PDF | Online PDF Editor and Form Filler - iLovePDF

Free online PDF Editor. Easily edit documents and add text, shapes, comments and highlights to a PDF file. Fill out PDF forms and modify your PDF by adding annotations.

Extrayez vos données PDF dans des tableurs EXCEL instantanément

Déplacez toutes vos données PDF dans des tableurs EXCEL automatiquement en quelques clics.

iLovePDF | Herramientas PDF online gratis

iLovePDF es un servicio online para trabajar con archivos PDF completamente gratuito y fácil de usar. ¡Unir, dividir, comprimir y convertir PDF!

Convert JPG to PDF. Images JPG to PDF online - iLovePDF

Convert JPG images to PDF, rotate them or set a page margin. Convert JPG to PDF online, easily and free.

Convert PDF to Excel. PDF to XLS spreadsheets online - iLovePDF

Extract all your PDF tables to EXCEL spreadsheets automatically in just a few clicks. The best free PDF to Excel converter online

Organize arquivos PDF online. Ferramenta gratuita para ... - iLovePDF

Ordene as páginas do PDF como você precisar. Você também pode adicionar ou remover páginas PDF no nosso organizador PDF em apenas um clique. Em poucos segundos e de forma gratuita.

iLovePDF | Online PDF tools for PDF lovers

iLovePDF is an online service to work with PDF files completely free and easy to use. Merge PDF, split PDF, compress PDF, office to PDF, PDF to JPG and more!

Login - iLovePDF

Inicia sesión en iLovePDF para acceder a todas las herramientas y funciones de PDF.

iLovePDF, acceso a tu cuenta

Accede a tu cuenta de iLovePDF para disfrutar de más prestaciones: más MB, más archivos al mismo tiempo, ver las últimas imágenes procesadas y muchas más características.

PDF to WORD | Convert PDF to Word online for free - iLovePDF

Convert PDF to editable Word documents for free. PDF to Word conversion is fast, secure and almost 100% accurate. Convert scanned PDF to DOC keeping the layout.

Edit PDF | Online PDF Editor and Form Filler - iLovePDF

Free online PDF Editor. Easily edit documents and add text, shapes, comments and highlights to a PDF file. Fill out PDF forms and modify your PDF by adding annotations.

Extrayez vos données PDF dans des tableurs EXCEL instantanément

Déplacez toutes vos données PDF dans des tableurs EXCEL automatiquement en quelques clics.

iLovePDF | Herramientas PDF online gratis

iLovePDF es un servicio online para trabajar con archivos PDF completamente gratuito y fácil de usar. ¡Unir, dividir, comprimir y convertir PDF!

Convert JPG to PDF. Images JPG to PDF online - iLovePDF

Convert JPG images to PDF, rotate them or set a page margin. Convert JPG to PDF online, easily and free.

Convert PDF to Excel. PDF to XLS spreadsheets online - iLovePDF

Extract all your PDF tables to EXCEL spreadsheets automatically in just a few clicks. The best free PDF to Excel converter online

Organize arquivos PDF online. Ferramenta gratuita para ... - iLovePDF

Ordene as páginas do PDF como você precisar. Você também pode adicionar ou remover páginas PDF no nosso organizador PDF em apenas um clique. Em poucos segundos e de ...

Explore the captivating themes of 'Love in a Cold Climate' by Nancy Mitford. Discover how love blossoms amid social challenges. Learn more about this classic today!

[Back to Home](#)