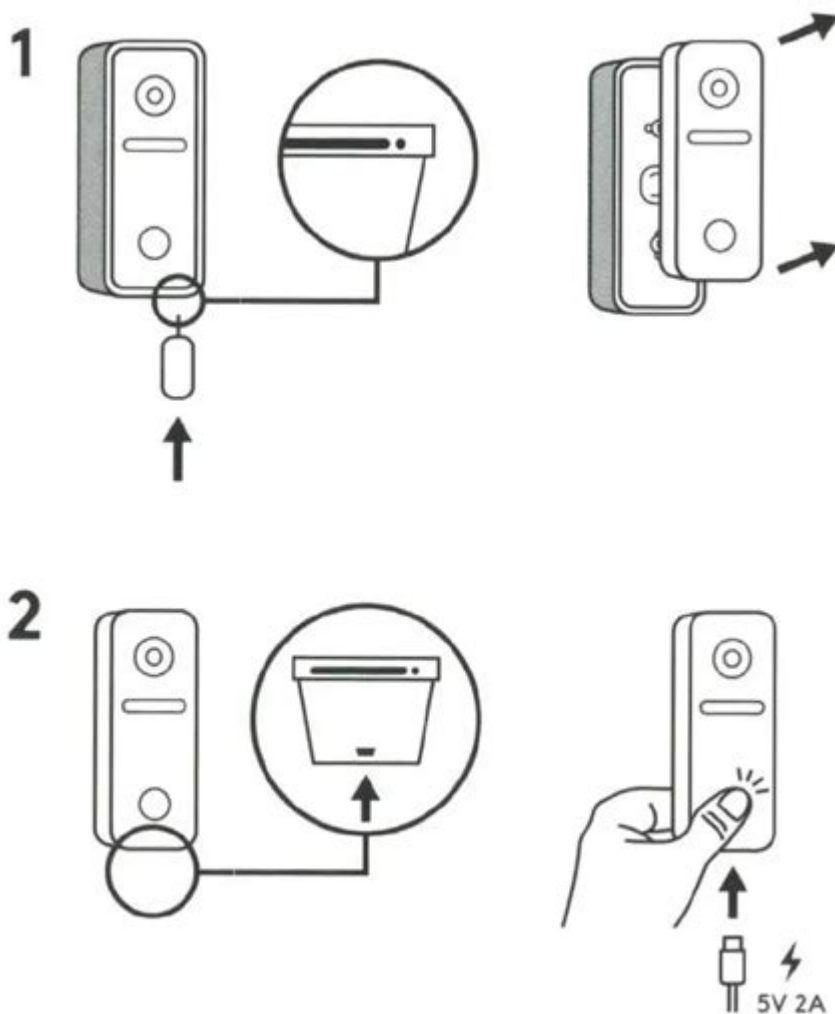


Logitech Circle View Doorbell Manual



Logitech Circle View Doorbell Manual

The Logitech Circle View Doorbell is an advanced smart home device designed to enhance your security and streamline your daily life. With high-definition video quality, smart alerts, and seamless integration with Apple HomeKit, this doorbell is an excellent investment for homeowners looking to improve their home surveillance. This article will serve as a comprehensive guide to help you understand the functionalities of the Logitech Circle View Doorbell, installation procedures, and troubleshooting tips.

Overview of the Logitech Circle View Doorbell

The Logitech Circle View Doorbell offers a range of features designed to make monitoring your doorstep easier and more efficient. Below are some of the key features that make this doorbell stand out:

- **High-Definition Video:** The doorbell captures 1600p HD video with a 180-degree field of view, providing crisp details and a wider perspective.
- **Night Vision:** Equipped with advanced infrared technology, it enables clear visibility even in low-light conditions.
- **Two-Way Audio:** The device features built-in microphones and speakers, allowing homeowners to communicate with visitors directly through their smartphones.
- **Smart Alerts:** Receive instant notifications on your smartphone whenever someone approaches your door.
- **HomeKit Integration:** Compatible with Apple HomeKit, allowing you to manage your doorbell through the Home app and with Siri.
- **Weather Resistant:** Designed to withstand various weather conditions, making it suitable for outdoor use.

Unboxing Your Logitech Circle View Doorbell

Before diving into installation, it's essential to familiarize yourself with the contents of the box. When you unbox the Logitech Circle View Doorbell, you should find:

1. The Circle View Doorbell unit
2. Mounting plate
3. Installation screws
4. Wiring connectors
5. User manual (which we are summarizing here)
6. Optional wedge mount for angled installation

Installation Guide

Installing the Logitech Circle View Doorbell involves several steps. Below is a step-by-step guide to help you through the process:

Step 1: Gather Required Tools

Before starting the installation, ensure you have the following tools:

- Screwdriver (Phillips or flathead, depending on your screws)
- Drill (if necessary)
- Wire cutter/stripper
- Voltage tester (optional but recommended)

Step 2: Turn Off Power

Safety is paramount. Before working on the doorbell, turn off the power supply to your existing doorbell at your circuit breaker. This step will prevent any electrical accidents.

Step 3: Remove Existing Doorbell

Take off your existing doorbell unit by unscrewing it from the wall. If necessary, use a wire cutter to disconnect the wires carefully. Remember to note how the wires are connected, as you will need to replicate this setup with your new doorbell.

Step 4: Connect Wires to the Circle View Doorbell

Using the wiring connectors provided, connect the wires from your home to the corresponding terminals on the Circle View Doorbell. Most commonly, you will see two wires: one for the power supply and the other for the chime. If you're unsure, refer to the user manual for the correct wiring diagram.

Step 5: Mount the Doorbell

Attach the mounting plate to your wall using the screws provided. Align the Circle View Doorbell with the mounting plate, then press it into place until it clicks securely. If you need to angle the doorbell for better visibility, use the wedge mount included.

Step 6: Restore Power

Once everything is securely mounted, turn the power back on at the circuit breaker. The doorbell should power up and connect to your Wi-Fi network.

Step 7: Set Up the Doorbell on the App

1. Download the Apple Home app if you haven't already.
2. Open the app and follow the prompts to add a new accessory.
3. Scan the HomeKit setup code located on the doorbell or in the user manual.
4. Follow the on-screen instructions to complete the setup.

Using Your Logitech Circle View Doorbell

After installation, you can start using your Logitech Circle View Doorbell. Here are some features to explore:

Live View

You can access a live video feed from your doorbell through the Home app. This feature allows you to see who is at your door in real-time.

Smart Notifications

Customize what types of notifications you receive. You can choose to get alerts for specific motion events, such as a person detected or package deliveries.

Two-Way Communication

Utilize the two-way audio feature to communicate with visitors. This function is excellent for talking to delivery personnel or guests without opening the door.

Integrate with Other Smart Devices

If you have other HomeKit-enabled devices, you can create automations that respond to doorbell events, such as turning on lights when someone approaches.

Troubleshooting Common Issues

Even the best devices can encounter issues. Below are some common problems and their solutions.

No Power to the Doorbell

- Ensure that the power is turned on at the circuit breaker.
- Check the wiring connections for any loose or disconnected wires.

Video Feed Not Working

- Verify that your Wi-Fi connection is stable.
- Restart the doorbell by disconnecting and reconnecting the power supply.

Notification Issues

- Ensure that notifications are enabled in the Home app settings.
- Check your device settings to ensure that notifications from the Home app are allowed.

Conclusion

The Logitech Circle View Doorbell is a powerful tool for enhancing home security. With its easy installation, high-quality video, and seamless integration with Apple HomeKit, this device offers a comprehensive solution for monitoring your front door. By following this guide, you can effectively install and utilize your Circle View Doorbell, ensuring that your home remains secure and monitored. Whether you're at home or away, you'll have peace of mind knowing that you can always see who is at your door.

Frequently Asked Questions

What is the Logitech Circle View Doorbell?

The Logitech Circle View Doorbell is a smart video doorbell that offers HD video streaming, two-way audio, and integration with Apple HomeKit for enhanced home security and convenience.

Where can I find the Logitech Circle View Doorbell manual?

The manual for the Logitech Circle View Doorbell can be found on the official Logitech support website or included in the product packaging.

How do I install the Logitech Circle View Doorbell?

Installation involves removing your existing doorbell, connecting the Circle View Doorbell to your existing doorbell wires, and mounting it to the wall. Detailed steps are included in the user manual.

What are the key features of the Logitech Circle View Doorbell?

Key features include 160-degree field of view, night vision, customizable motion zones, two-way audio, and integration with Apple HomeKit.

Is the Logitech Circle View Doorbell compatible with other smart home systems?

The Logitech Circle View Doorbell is primarily designed for Apple HomeKit and may not support other smart home systems such as Google Assistant or Amazon Alexa.

How do I troubleshoot connectivity issues with the Logitech Circle View Doorbell?

To troubleshoot connectivity issues, ensure your Wi-Fi signal is strong at the doorbell's location, check for firmware updates in the Home app, and restart both the doorbell and your router if needed.

Can I view the Logitech Circle View Doorbell feed remotely?

Yes, you can view the doorbell feed remotely through the Apple Home app on your iPhone, iPad, or Apple Watch, as long as the doorbell is connected to your home Wi-Fi.

What should I do if my Logitech Circle View Doorbell isn't recording video?

If the doorbell isn't recording video, check the camera's settings in the Home app, ensure that motion detection is enabled, and verify that there is enough storage available in your HomeKit Secure Video plan.

How do I reset the Logitech Circle View Doorbell?

To reset the Logitech Circle View Doorbell, press and hold the reset button

on the back of the device for about 10 seconds until the LED indicator blinks orange, indicating it is resetting.

Find other PDF article:

<https://soc.up.edu.ph/41-buzz/Book?dataid=eGB51-4391&title=miss-vickie-pressure-cooker-recipes.pdf>

[Logitech Circle View Doorbell Manual](#)

2025 Logitech M-M650 /MX Master ...

Mar 4, 2025 · M650 M Logitech M SmartWheel ...

G HUB -

502hero G HUB r7000p

2025 Logitech 6600

Jul 12, 2025 · 2025 Logitech 6600

-

SN 400-820-0338 800-820-0338 SN ...

GHUB -

G HUB RGB (logitechg.com.cn)

Logitech -

G102

-

G102 G2

? -

Logitech Options Logi Options+ Logitech Gaming Software Logitech G HUB Logitech Options Logi Options+ M/MX ...

2025 Logitech K/G/MX ...

Mar 4, 2025 · Logitech™

MX Master3s

Mar 7, 2023 · MX Master 3S 90%

2025 Logitech M-M650 /MX Master ...

Mar 4, 2025 · M650 M Logitech M SmartWheel ...

G HUB -

502hero G HUB r7000p

2025 Logitech 6600

Jul 12, 2025 · 2025 Logitech 6600

-

SN 400-820-0338 800-820-0338 SN SN ...

GHUB -

G HUB RGB (logitechg.com.cn)

Logitech -

G102

-

1 G102 2

? -

4 Logitech Options Logi Options+ Logitech Gaming Software Logitech G HUB Logitech Options Logi Options+ M/MX ...

2025 Logitech K/G/MX ...

Mar 4, 2025 · Logitech™

MX Master3s

Mar 7, 2023 · 3. MX Master 3S 90%

Discover the complete Logitech Circle View Doorbell manual for setup

[Back to Home](#)