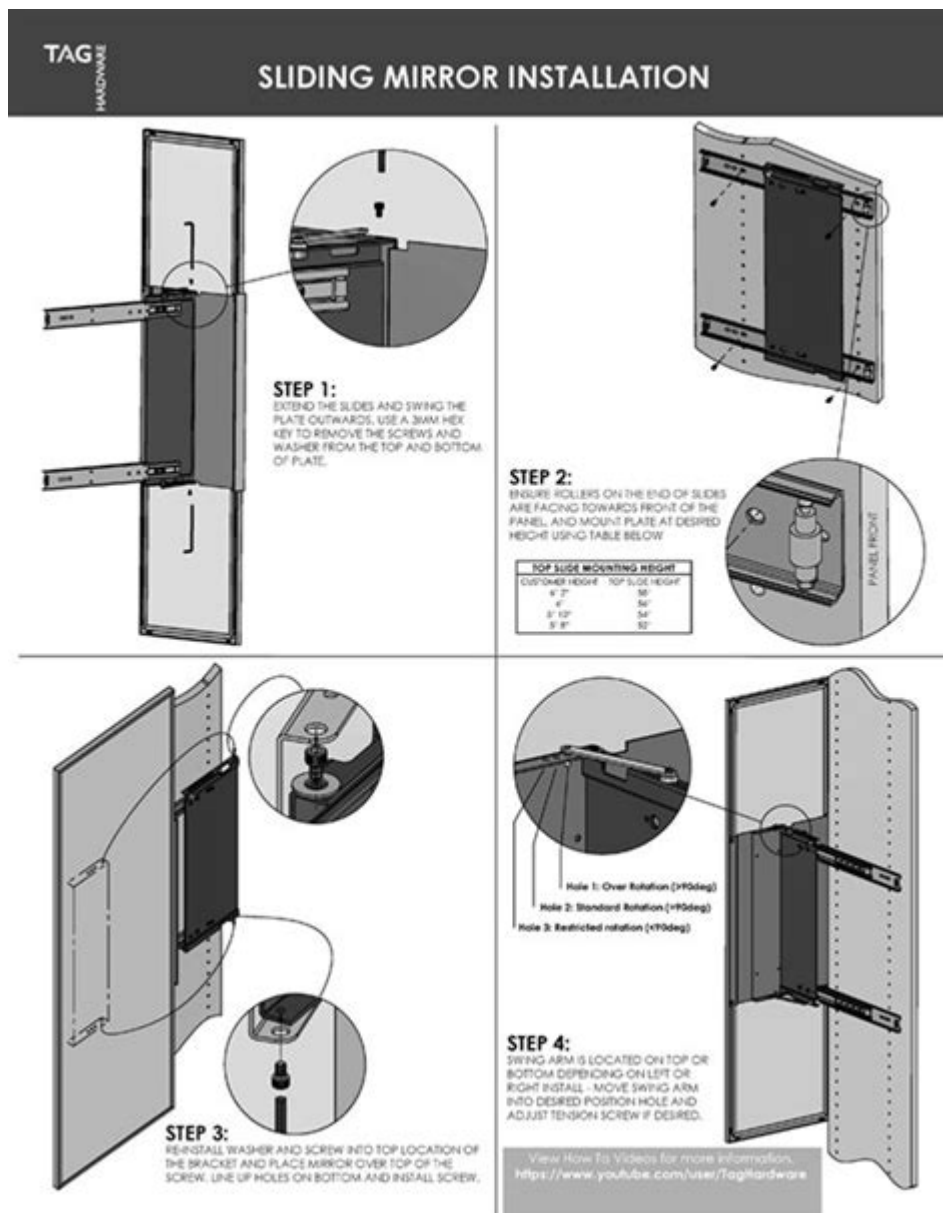


Lululemon Mirror Installation Instructions



Lululemon Mirror installation instructions are essential for anyone looking to set up their new home fitness device. The Lululemon Mirror, an innovative and stylish piece of technology, not only serves as a full-length mirror but also offers a comprehensive workout experience. With thousands of classes ranging from yoga to strength training, it's a fantastic addition to any home gym. However, proper installation is crucial to ensure that the device functions optimally and is safely secured. In this article, we will guide you through the installation process, from what you need to prepare before starting to the final touches that ensure your Mirror is set up correctly.

Preparing for Installation

Before diving into the installation process, it's vital to prepare adequately. This preparation involves gathering the necessary tools, choosing the right location, and ensuring you have enough space for

the Mirror.

Tools You Will Need

Here are the tools you might need for the installation:

- Stud finder: To locate wall studs for secure mounting
- Level: To ensure the Mirror is hung straight
- Drill: For making holes in the wall
- Screwdriver: For tightening screws
- Measuring tape: To measure the height and distance from the floor
- Pencil: For marking spots on the wall

Choosing the Right Location

The location of your Lululemon Mirror is crucial for both functionality and aesthetic appeal. Here are some tips for selecting the best spot:

1. Wall Space: Choose a wall that has enough space for the Mirror. The Mirror dimensions are approximately 52 inches tall and 22 inches wide. You'll need at least a few inches of clearance around it.
2. Lighting: Natural or bright lighting will enhance your workout sessions. Consider placing it near a window or in a well-lit room.
3. Power Outlet: The Mirror requires a power source, so ensure there is an outlet nearby.
4. Flooring: The area should have a non-slip surface, especially if you plan to perform high-intensity workouts.

Measuring and Marking the Wall

Once you have determined the perfect location, it's time to measure and mark the wall:

1. Height: The ideal height for mounting the Mirror is eye level when you are standing. Use a measuring tape to find the right height. A common recommendation is between 60 to 65 inches from the floor to the center of the Mirror.
2. Mark the Spots: Use a pencil to mark the spots where the top and bottom of the Mirror will be placed.
3. Check for Level: Use a level to ensure that your marks are straight. This step is vital to avoid a crooked installation.

Installation Steps

With your tools ready and wall marked, you can begin the installation process. Follow these steps carefully to ensure a smooth installation.

Finding the Studs

1. Use the Stud Finder: Run the stud finder along the wall where you plan to install the Mirror. This tool will help you locate the wooden beams behind the drywall that will support the Mirror's weight.
2. Mark the Stud Locations: Once you find the studs, mark their locations with a pencil. It's essential to attach the Mirror to studs for maximum stability.

Drilling the Holes

1. Drill Pilot Holes: Using a drill, make pilot holes where you've marked the stud locations. Ensure the holes are the correct size for the screws you will be using.
2. Check Alignment: After drilling, use the level again to check that the pilot holes are aligned correctly.

Mounting the Mirror Bracket

1. Attach the Bracket: The Lululemon Mirror comes with a mounting bracket. Align the bracket with the pilot holes and secure it to the wall using the screws provided.
2. Ensure Stability: Tighten the screws until the bracket is firmly attached to the wall. Double-check with the level to ensure it is straight.

Hanging the Mirror

1. Lift the Mirror: With assistance, carefully lift the Mirror and align it with the mounted bracket.
2. Secure the Mirror: Once the Mirror is in position, secure it to the bracket according to the manufacturer's instructions. This typically involves sliding the Mirror into place and tightening any additional screws to hold it securely.

Finalizing the Installation

With the Mirror hung securely, it's time to finalize the installation. This includes ensuring it is

powered and connected to your home network.

Connecting to Power

1. Plug in the Mirror: Ensure that the power cord is correctly plugged into a nearby outlet.
2. Conceal Wires: If possible, conceal any excess wiring to maintain a clean look.

Connecting to Wi-Fi

1. Follow On-screen Instructions: Turn on the Mirror and follow the on-screen setup instructions to connect it to your Wi-Fi network.
2. Register Your Device: You may need to create an account or register your Mirror to access its features fully.

Calibrating the Mirror

1. Calibrate the Device: Follow the prompts on the device to calibrate it for your height and preferences.
2. Test the Functionality: Once set up, test the various functions, including audio and video, to ensure everything is working correctly.

Maintenance and Care

After successfully installing your Lululemon Mirror, regular maintenance will ensure it remains in top condition.

Cleaning the Mirror

1. Use a Soft Cloth: To clean the surface, use a soft, lint-free cloth. Avoid abrasive materials that could scratch the surface.
2. Gentle Cleanser: If necessary, use a mild cleanser but avoid spraying directly onto the Mirror. Instead, spray the cloth and then wipe the surface.

Regular Checks

1. **Inspect Mounting:** Periodically check the mounting screws and the bracket to ensure everything remains secure.
2. **Software Updates:** Keep the software of the Mirror updated to enjoy the latest features and improvements.

Conclusion

Installing the Lululemon Mirror can seem daunting, but with the right preparation and careful execution of the steps outlined above, you'll have it set up in no time. Remember to ensure that it is securely mounted and connected to power and Wi-Fi for optimal performance. Once installed, your Mirror will provide a seamless workout experience that transforms your home into a personal fitness studio. Enjoy your new fitness journey with Lululemon Mirror!

Frequently Asked Questions

What tools do I need for Lululemon Mirror installation?

You will need a stud finder, a level, a drill, a screwdriver, and a tape measure to install the Lululemon Mirror.

Can I install the Lululemon Mirror by myself?

Yes, the installation can be done by one person, but having a second person can make the process easier, especially when lifting and securing the mirror.

What type of wall is suitable for mounting the Lululemon Mirror?

The Lululemon Mirror is designed to be mounted on drywall, but it's recommended to secure it to wall studs for the most stable installation.

Are there specific height recommendations for mounting the Lululemon Mirror?

The ideal height for mounting the Lululemon Mirror is around 5 to 6 feet from the floor to ensure optimal visibility during workouts.

What are the steps to install the Lululemon Mirror?

1. Find and mark the studs in the wall.
2. Use the included mounting template to mark drill holes.
3. Drill holes and install anchors if necessary.
4. Hang the mirror using the mounting brackets.
5. Level the mirror and secure it.

Is it safe to mount the Lululemon Mirror on a concrete wall?

Yes, but you will need to use appropriate masonry anchors and drill bits designed for concrete to ensure a secure installation.

What should I do if I can't find a stud to mount the Lululemon Mirror?

If you can't find a stud, you should use heavy-duty wall anchors that can support the weight of the mirror safely.

How do I ensure the Lululemon Mirror is level after installation?

Use a level tool after hanging the mirror to check its alignment; make adjustments as necessary before fully securing it.

Can I mount the Lululemon Mirror in a corner or on an angled wall?

The Lululemon Mirror is designed for flat walls; mounting it in a corner or on an angled wall is not recommended as it may affect usability.

Find other PDF article:

<https://soc.up.edu.ph/61-page/files?dataid=Ijc38-2457&title=the-richest-man-in-town.pdf>

Lululemon Mirror Installation Instructions

lululemon Lululemon -

lululemon 26 = Chip Wilson " " ...

Lululemon ...

Lululemon lululemon 3 ...

lululemon | ...

Lululemon | lululemon + - ♀ ...

On -

Under Armour ...

Lululemon Lululemon ...

lululemon Q1
lululemon ...

Lululemon logo -
Lululemon
...

lululemon logo ...
Lululemon 30-40
...

lululemon -
lululemon 20
...

lululemon -
Lululemon 2007 2021 11 19 Lululemon 614 4000
...

Lululemon ...
Lululemon Mirror 2020 6 Lululemon Peloton
...

Lululemon -
lululemon 26 = Chip Wilson
“” ...

Lululemon ...
Lululemon lululemon 3
...

Lululemon | ...
Lululemon | lululemon + - ♀
+ ...

On -
Under Armour
...

Lululemon Lululemon ...
lululemon Q1
lululemon ...

Lululemon logo -
Lululemon
...

lululemon logo ...
Lululemon 30-40
...

lululemon 20

Lululemon 2007 2021 11 19 Lululemon 614 4000 ...

Lululemon Mirror 2020 6 Lululemon Peloton

[Back to Home](#)