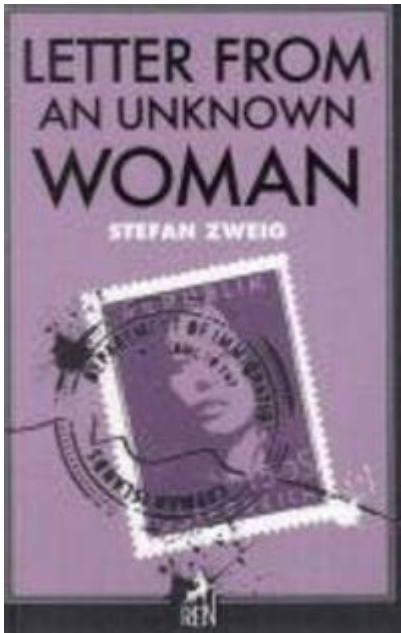


# Letter From An Unknown Woman Stefan Zweig



## INTRODUCTION TO "LETTER FROM AN UNKNOWN WOMAN"

**LETTER FROM AN UNKNOWN WOMAN** IS A POIGNANT NOVELLA PENNED BY THE AUSTRIAN WRITER STEFAN ZWEIG, FIRST PUBLISHED IN 1922. THE WORK HAS CAPTIVATED READERS WITH ITS EXPLORATION OF UNREQUITED LOVE, IDENTITY, AND THE COMPLEXITIES OF HUMAN RELATIONSHIPS. THROUGH A CLEVERLY CONSTRUCTED NARRATIVE, ZWEIG DELVES INTO THE DEPTHS OF EMOTIONAL EXPERIENCE, PRESENTING A POWERFUL REFLECTION ON THE NATURE OF LOVE AND LONGING. THIS ARTICLE SEEKS TO UNPACK THE THEMES, CHARACTERS, AND SIGNIFICANCE OF THIS TIMELESS PIECE OF LITERATURE.

## OVERVIEW OF THE NOVELLA

"LETTER FROM AN UNKNOWN WOMAN" IS STRUCTURED AS A SINGLE LETTER WRITTEN BY A WOMAN TO A FAMOUS AUTHOR, WHO REMAINS UNNAMED THROUGHOUT THE NARRATIVE. THE STORY UNFOLDS AS THE WOMAN RECOUNTS HER LIFE AND HER DEEP, UNRECIPROCATED LOVE FOR THE MAN. THE LETTER SERVES AS BOTH A CONFESSION AND A FAREWELL, ILLUMINATING THE WOMAN'S EMOTIONS AND EXPERIENCES OVER THE YEARS.

## PLOT SUMMARY

THE NOVELLA BEGINS WITH THE UNNAMED MAN, A SUCCESSFUL WRITER, WHO RECEIVES A LETTER FROM A WOMAN HE DOES NOT REMEMBER. AS HE READS, THE READER IS TRANSPORTED INTO THE WOMAN'S PAST, WHERE SHE RECOUNTS THE DAY THEY FIRST MET. THE PLOT CAN BE SUMMARIZED IN A FEW KEY POINTS:

1. **FIRST ENCOUNTER:** THE WOMAN DESCRIBES HER INITIAL MEETING WITH THE MAN WHEN SHE WAS JUST A YOUNG GIRL. THIS ENCOUNTER LEAVES A LASTING IMPRESSION ON HER, MARKING THE BEGINNING OF HER INTENSE INFATUATION.
2. **UNREQUITED LOVE:** AS THE STORY UNFOLDS, THE WOMAN REVEALS HER ONGOING LOVE FOR THE MAN, DESPITE HIS

OBLIVIOUSNESS TO HER FEELINGS. SHE DETAILS THE YEARS OF LONGING AND THE SACRIFICES SHE MADE, INCLUDING HER DECISION TO REMAIN A SILENT OBSERVER IN HIS LIFE.

3. LIFE CIRCUMSTANCES: THE LETTER CHRONICLES SIGNIFICANT MOMENTS IN HER LIFE — HER MARRIAGE, THE BIRTH OF HER CHILD, AND THE TRIALS AND TRIBULATIONS SHE FACES. THROUGH THESE MOMENTS, THE READER WITNESSES THE JUXTAPOSITION OF HER LOVE FOR THE MAN AND HER RESPONSIBILITIES AS A WIFE AND MOTHER.

4. FINAL REVELATION: THE CLIMAX OF THE NOVELLA OCCURS WHEN THE WOMAN REVEALS HER TRUE IDENTITY AND THE EXTENT OF HER DEVOTION. THE EMOTIONAL WEIGHT OF THE LETTER CULMINATES IN A HEART-WRENCHING FINALE THAT LEAVES THE READER CONTEMPLATING THE NATURE OF LOVE AND LOSS.

## THEMES EXPLORED IN THE NOVELLA

ZWEIG'S NOVELLA IS RICH WITH THEMES THAT RESONATE DEEPLY WITH THE HUMAN EXPERIENCE. SOME OF THE MOST PROMINENT THEMES INCLUDE:

### 1. UNREQUITED LOVE

AT THE HEART OF "LETTER FROM AN UNKNOWN WOMAN" IS THE THEME OF UNREQUITED LOVE. THE WOMAN'S INTENSE FEELINGS FOR THE MAN ARE NEVER RECIPROCATED, LEADING TO A PROFOUND SENSE OF LONELINESS AND LONGING. THIS THEME RAISES QUESTIONS ABOUT THE NATURE OF LOVE ITSELF — WHETHER IT REQUIRES MUTUAL ACKNOWLEDGMENT TO BE VALID OR IF IT CAN EXIST INDEPENDENTLY.

### 2. IDENTITY AND SELFHOOD

THE WOMAN IN THE STORY GRAPPLES WITH HER IDENTITY THROUGHOUT THE NARRATIVE. SHE IS DEFINED BY HER LOVE FOR THE MAN, YET SHE REMAINS ANONYMOUS, UNDERSCORING HER ROLE AS A PASSIVE OBSERVER IN HIS LIFE. THIS TENSION BETWEEN SELFHOOD AND THE DESIRE FOR CONNECTION IS CENTRAL TO THE NOVELLA'S EMOTIONAL IMPACT.

### 3. MEMORY AND NOSTALGIA

ZWEIG EMPLOYS MEMORY AS A POWERFUL NARRATIVE DEVICE. THE WOMAN'S RECOLLECTIONS ARE IMBUED WITH NOSTALGIA, HIGHLIGHTING HOW THE PAST CAN SHAPE ONE'S PRESENT. THE ACT OF WRITING THE LETTER BECOMES A MEANS OF RECLAIMING HER EXPERIENCES AND EXPRESSING HER DEEP-SEATED FEELINGS, EVEN IF THEY WILL NEVER BE ACKNOWLEDGED.

### 4. THE NATURE OF TIME

TIME PLAYS A CRUCIAL ROLE IN THE NOVELLA, ILLUSTRATING THE TRANSIENT NATURE OF LOVE AND LIFE. THE WOMAN'S REFLECTIONS SPAN YEARS, EMPHASIZING HOW LOVE CAN ENDURE DESPITE THE PASSAGE OF TIME. THIS THEME IS PARTICULARLY POIGNANT AS IT DRAWS ATTENTION TO THE INEVITABILITY OF CHANGE AND THE WAY RELATIONSHIPS EVOLVE.

## CHARACTER ANALYSIS

THE CHARACTERS IN "LETTER FROM AN UNKNOWN WOMAN" ARE RICHLY DEVELOPED, WITH THE UNNAMED WOMAN SERVING AS THE EMOTIONAL CORE OF THE STORY. HER JOURNEY PROVIDES INSIGHT INTO VARIOUS ASPECTS OF LOVE, IDENTITY, AND SACRIFICE.

# THE UNKNOWN WOMAN

THE PROTAGONIST IS A COMPLEX CHARACTER WHO EMBODIES THE ESSENCE OF UNREQUITED LOVE. HER EMOTIONS ARE RAW AND AUTHENTIC, MAKING HER RELATABLE TO ANYONE WHO HAS EXPERIENCED SIMILAR FEELINGS. KEY ASPECTS OF HER CHARACTER INCLUDE:

- DEVOTION: HER UNWAVERING LOVE FOR THE MAN IS A TESTAMENT TO HER EMOTIONAL DEPTH. DESPITE HIS INDIFFERENCE, SHE REMAINS DEVOTED TO HIM, ILLUSTRATING THE COMPLEXITY OF LOVE.
- RESILIENCE: THROUGHOUT HER LIFE, THE WOMAN FACES NUMEROUS CHALLENGES, INCLUDING SOCIETAL EXPECTATIONS AND PERSONAL SACRIFICES. HER RESILIENCE SPEAKS TO THE STRENGTH OF THE HUMAN SPIRIT IN THE FACE OF ADVERSITY.
- ANONYMITY: THE DECISION TO REMAIN UNNAMED REFLECTS HER DESIRE TO PRIORITIZE HER FEELINGS ABOVE HER IDENTITY. THIS ANONYMITY ADDS A LAYER OF UNIVERSALITY TO HER EXPERIENCE, ALLOWING READERS TO PROJECT THEIR OWN FEELINGS ONTO HER CHARACTER.

## THE UNNAMED MAN

THE UNNAMED MAN REPRESENTS A MORE PASSIVE CHARACTER, SERVING AS A FOIL TO THE WOMAN'S PASSIONATE EMOTIONS. HIS CHARACTERIZATION RAISES QUESTIONS ABOUT THE NATURE OF LOVE AND RECOGNITION:

- INDIFFERENCE: HIS OBLIVIOUSNESS TO THE WOMAN'S FEELINGS EMPHASIZES THE THEME OF UNREQUITED LOVE. HE EXISTS IN A WORLD OF SUCCESS AND FAME, SEEMINGLY UNAWARE OF THE PROFOUND IMPACT HE HAS ON THE WOMAN'S LIFE.
- SYMBOL OF DESIRE: THE MAN SERVES AS A SYMBOL OF UNATTAINABLE DESIRE, ILLUSTRATING HOW LOVE CAN SOMETIMES BE DIRECTED AT AN IDEALIZED IMAGE RATHER THAN A FULLY REALIZED PERSON.

## LITERARY STYLE AND TECHNIQUES

STEFAN ZWEIG'S WRITING STYLE IN "LETTER FROM AN UNKNOWN WOMAN" IS CHARACTERIZED BY ITS LYRICAL QUALITY AND EMOTIONAL INTENSITY. SEVERAL LITERARY TECHNIQUES ENHANCE THE NOVELLA'S IMPACT:

### 1. STREAM OF CONSCIOUSNESS

ZWEIG EMPLOYS A STREAM-OF-CONSCIOUSNESS NARRATIVE STYLE, ALLOWING READERS TO EXPERIENCE THE WOMAN'S THOUGHTS AND FEELINGS IN REAL-TIME. THIS TECHNIQUE CREATES AN INTIMATE CONNECTION BETWEEN THE READER AND THE PROTAGONIST, MAKING HER EMOTIONS PALPABLE.

### 2. SYMBOLISM

THE LETTER ITSELF SERVES AS A POWERFUL SYMBOL OF LOVE AND LONGING. IT REPRESENTS THE WOMAN'S DESIRE TO BE SEEN AND ACKNOWLEDGED, AS WELL AS THE PERMANENCE OF HER FEELINGS DESPITE THE TRANSIENT NATURE OF LIFE.

### 3. CONTRAST AND JUXTAPOSITION

ZWEIG EFFECTIVELY CONTRASTS THE WOMAN'S INNER EMOTIONAL WORLD WITH THE EXTERNAL REALITY OF HER LIFE. THIS JUXTAPOSITION HIGHLIGHTS THE TENSION BETWEEN LOVE AND SOCIETAL EXPECTATIONS, DEEPENING THE EMOTIONAL RESONANCE OF THE STORY.

# THE IMPACT OF "LETTER FROM AN UNKNOWN WOMAN"

"LETTER FROM AN UNKNOWN WOMAN" HAS LEFT AN INDELIBLE MARK ON LITERATURE AND HAS INSPIRED COUNTLESS ADAPTATIONS, INCLUDING STAGE PLAYS AND FILMS. ITS EXPLORATION OF UNREQUITED LOVE RESONATES WITH READERS ACROSS GENERATIONS, ALLOWING FOR A PROFOUND CONNECTION TO THE HUMAN EXPERIENCE.

## 1. CULTURAL SIGNIFICANCE

THE NOVELLA'S EXPLORATION OF LOVE, IDENTITY, AND MEMORY SPEAKS TO UNIVERSAL THEMES THAT TRANSCEND TIME AND CULTURE. IT REMAINS RELEVANT IN CONTEMPORARY DISCUSSIONS ABOUT EMOTIONAL CONNECTIONS AND THE COMPLEXITIES OF RELATIONSHIPS.

## 2. INFLUENCE ON LITERATURE

ZWEIG'S WORK HAS INFLUENCED NUMEROUS AUTHORS AND PLAYWRIGHTS, WHO HAVE DRAWN INSPIRATION FROM HIS NUANCED PORTRAYAL OF LOVE AND LONGING. THE NOVELLA'S IMPACT CAN BE SEEN IN MODERN LITERATURE, WHERE SIMILAR THEMES ARE EXPLORED WITH DEPTH AND SENSITIVITY.

## CONCLUSION

IN "LETTER FROM AN UNKNOWN WOMAN," STEFAN ZWEIG CRAFTS A TIMELESS EXPLORATION OF UNREQUITED LOVE, IDENTITY, AND THE INTRICACIES OF HUMAN EMOTION. THROUGH THE LENS OF THE WOMAN'S LETTER, READERS ARE INVITED TO REFLECT ON THEIR OWN EXPERIENCES WITH LOVE AND LONGING. THE NOVELLA'S RICH THEMES, COMPELLING CHARACTERS, AND LYRICAL STYLE ENSURE ITS PLACE AS A SIGNIFICANT WORK IN THE CANON OF WORLD LITERATURE, CONTINUING TO RESONATE WITH READERS TODAY.

## FREQUENTLY ASKED QUESTIONS

### WHAT IS THE MAIN THEME OF 'LETTER FROM AN UNKNOWN WOMAN' BY STEFAN ZWEIG?

THE MAIN THEME REVOLVES AROUND UNREQUITED LOVE AND THE COMPLEXITIES OF HUMAN EMOTIONS, EXPLORING HOW ONE PERSON'S DEEP FEELINGS CAN REMAIN HIDDEN AND UNACKNOWLEDGED BY THE OBJECT OF THEIR AFFECTION.

### WHO IS THE NARRATOR OF 'LETTER FROM AN UNKNOWN WOMAN'?

THE NARRATOR IS A WOMAN WHO WRITES A LETTER TO A FAMOUS WRITER, REVEALING HER LIFELONG LOVE FOR HIM, DESPITE HIM NOT KNOWING HER WELL.

### HOW DOES THE STRUCTURE OF THE LETTER ENHANCE THE STORY?

THE STRUCTURE OF THE LETTER ALLOWS FOR AN INTIMATE AND PERSONAL EXPLORATION OF THE WOMAN'S FEELINGS, CREATING A POIGNANT CONTRAST BETWEEN HER EMOTIONAL DEPTH AND THE WRITER'S OBLIVION.

### WHAT ROLE DOES MEMORY PLAY IN 'LETTER FROM AN UNKNOWN WOMAN'?

MEMORY PLAYS A CRUCIAL ROLE AS THE WOMAN RECOUNTS PIVOTAL MOMENTS FROM HER LIFE THAT CONNECT HER TO THE WRITER, EMPHASIZING HOW MEMORIES SHAPE HER IDENTITY AND EMOTIONS.

## WHAT IS THE SIGNIFICANCE OF THE UNKNOWN WOMAN'S IDENTITY?

HER IDENTITY AS AN 'UNKNOWN WOMAN' HIGHLIGHTS THE THEME OF ANONYMITY IN LOVE, SUGGESTING THAT DEEP EMOTIONAL CONNECTIONS CAN EXIST WITHOUT MUTUAL RECOGNITION.

## HOW DOES STEFAN ZWEIG PORTRAY THE MALE PROTAGONIST IN THE STORY?

ZWEIG PORTRAYS THE MALE PROTAGONIST AS SELF-ABSORBED AND OBLIVIOUS TO THE IMPACT HE HAS ON OTHERS, PARTICULARLY THE WOMAN WHO LOVES HIM, WHICH UNDERSCORES THE NARRATIVE'S EXPLORATION OF SELFISHNESS IN RELATIONSHIPS.

## WHAT LITERARY TECHNIQUES DOES ZWEIG USE IN 'LETTER FROM AN UNKNOWN WOMAN'?

ZWEIG USES A FIRST-PERSON NARRATIVE, RICH DESCRIPTIVE LANGUAGE, AND EMOTIONAL INTROSPECTION TO CREATE A POWERFUL AND IMMERSIVE READING EXPERIENCE THAT DRAWS READERS INTO THE WOMAN'S PSYCHE.

## WHAT IS THE HISTORICAL CONTEXT OF 'LETTER FROM AN UNKNOWN WOMAN'?

WRITTEN IN THE EARLY 20TH CENTURY, THE NOVELLA REFLECTS THE SOCIAL NORMS AND GENDER DYNAMICS OF THE TIME, PARTICULARLY THE LIMITED AGENCY OF WOMEN IN ROMANTIC RELATIONSHIPS.

## HOW HAS 'LETTER FROM AN UNKNOWN WOMAN' BEEN RECEIVED BY MODERN AUDIENCES?

MODERN AUDIENCES APPRECIATE THE NOVELLA FOR ITS TIMELESS EXPLORATION OF LOVE AND LONGING, OFTEN FINDING RESONANCE IN ITS THEMES DESPITE THE HISTORICAL CONTEXT.

Find other PDF article:

<https://soc.up.edu.ph/29-scan/Book?trackid=MUC47-4631&title=how-many-languages-does-andrea-bocelli-speak.pdf>

## Letter From An Unknown Woman Stefan Zweig

letter -

Letter  
Letter ...

### Letter to Editor Previous Year Questions Class 10, 12 ... - SuccessCDs

May 28, 2025 · CBSE Class 10, 12 English Letter to Editor Questions (with model answers) from previous years question papers Letter to Editor Previous Year Questions with answers - A Letter to the editor of a newspaper is written to seek help of the publication to raise concern about a problem or social issue.

### Letter Writing - Types, Format, Examples - SuccessCDs

Feb 21, 2025 · Letter Writing in English. Check out what is a Letter, types of letters, tips to write good letters, solved examples of Letter writing in English.

### Article Review Letter -

Jan 21, 2014 · Article Review

Letter " " ...

*The Letter Previous Years Question with Answers (2017 to 2025)*

Jan 8, 2025 · The Letter question answers from previous years question papers (2025 to 2017). CBSE Class 10 English Communicative Book Chapter 3 The Letter Questions asked in previous years Board Exam from 2017 to 2025.

**Nano Letters 2 ? -**

Mar 20, 2025 · 2025 Nano Letters 2 ...

*cover letter -*

Cover letter @ ...

*Formal Letter Writing Previous Year Questions Class 10, 12 English ...*

May 29, 2025 · Formal Letter Writing Previous Year Questions with answers - In class 10 and 12, students have to write a formal letter which can be a letter to the editor, principal, government, police, RWA, Complaint letter, order letter or inquiry letter.

*A Letter to God Previous Years Question with Answers (2019 to ...*

Sep 27, 2024 · A Letter to God question answers from previous years question papers (2025 to 2019). CBSE Class 10 First Flight Book Chapter 1 A Letter to God Questions asked in previous years Board Exam from 2019 to 2025.

**Order Letters Previous Year Questions Class 10 English**

May 31, 2025 · Related: Letter to Police Previous Year Questions Letter to the Government Previous Year Questions Formal Letter Writing Previous Year Questions Complaint Letter Previous Year Questions 10 Examples of Order Letter Order Letter Format and Samples Previous Year's Class 10 English 'Order Letter' Questions Q1. You are Punit/Punita of Eric India Pvt. ...

**letter -**

Letter ...

**Letter to Editor Previous Year Questions Class 10, 12 ... - SuccessCDs**

May 28, 2025 · CBSE Class 10, 12 English Letter to Editor Questions (with model answers) from previous years question papers Letter to Editor Previous Year Questions with answers - A Letter to the editor of a newspaper is written to seek help of the publication to raise concern about a problem or social issue.

Letter Writing - Types, Format, Examples - SuccessCDs

Feb 21, 2025 · Letter Writing in English. Check out what is a Letter, types of letters, tips to write good letters, solved examples of Letter writing in English.

**Article Review Letter -**

Jan 21, 2014 · Article Review Letter ...

*The Letter Previous Years Question with Answers (2017 to 2025)*

Jan 8, 2025 · The Letter question answers from previous years question papers (2025 to 2017). CBSE Class 10 English Communicative Book Chapter 3 The Letter Questions asked in previous years

Board Exam from 2017 to 2025.

[Nano Letters](#) 2 -

Mar 20, 2025 · Nano Letters 2

[cover letter](#) -

Cover letter @

[Formal Letter Writing Previous Year Questions Class 10, 12 English ...](#)

May 29, 2025 · Formal Letter Writing Previous Year Questions with answers – In class 10 and 12, students have to write a formal letter which can be a letter to the editor, principal, government, police, RWA, Complaint letter, order letter or inquiry letter.

**A Letter to God Previous Years Question with Answers (2019 to ...**

Sep 27, 2024 · A Letter to God question answers from previous years question papers (2025 to 2019). CBSE Class 10 First Flight Book Chapter 1 A Letter to God Questions asked in previous years Board Exam from 2019 to 2025.

[Order Letters Previous Year Questions Class 10 English](#)

May 31, 2025 · Related: Letter to Police Previous Year Questions Letter to the Government Previous Year Questions Formal Letter Writing Previous Year Questions Complaint Letter Previous Year Questions 10 Examples of Order Letter Order Letter Format and Samples Previous Year's Class 10 English 'Order Letter' Questions Q1. You are Punit/Punita of Eric India Pvt. ...

Explore the profound themes of love and longing in 'Letter from an Unknown Woman' by Stefan Zweig. Discover how this poignant tale resonates today. Learn more!

[Back to Home](#)