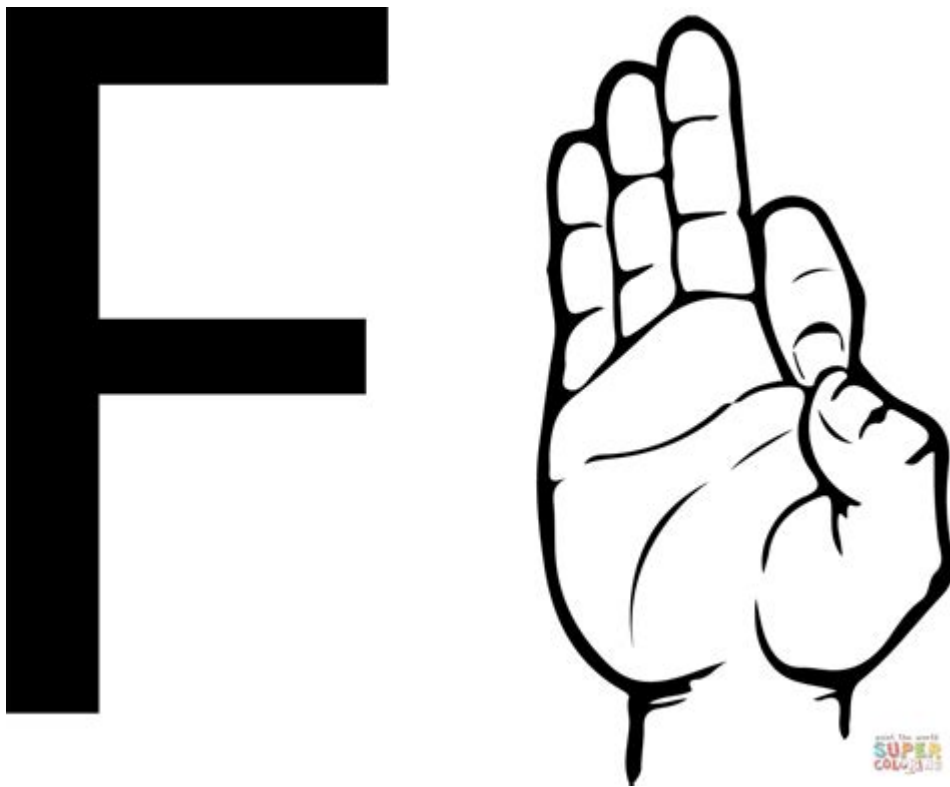


Letter F In Sign Language



F in sign language is a fundamental aspect of fingerspelling, which is a vital component of American Sign Language (ASL) and many other sign languages around the world. The letter F is not only a letter in the alphabet but also represents various words and concepts that are essential for everyday communication. Understanding how to correctly form and use the sign for F is crucial for effective communication within the deaf and hard-of-hearing communities. This article will explore the formation, usage, and significance of the letter F in sign language, along with practical tips and insights into its application in various contexts.

Formation of the Letter F in Sign Language

Physical Gesture

To form the letter F in ASL, you need to follow these steps:

1. Start with your dominant hand: Make sure your dominant hand is free and ready to form the sign.
2. Create a circular motion: Curl your fingers into a loose fist.
3. Extend your thumb: Position your thumb in front of your fingers, so it is perpendicular to them.
4. Hold your hand steady: Keep your hand still and ensure that your thumb and fingers are clearly visible to the person you are communicating with.

The resulting shape resembles a small circle with the thumb extended, and this distinct configuration allows others to recognize the letter F easily.

Common Mistakes to Avoid

When learning to sign the letter F, beginners often make some common mistakes, including:

- Incorrect thumb positioning: Make sure the thumb is extended properly and not tucked in or too far away from the fingers.
- Finger placement: Ensure that the fingers are not splayed out too wide; they should be relatively close together.
- Hand orientation: The palm should face the person you are communicating with for clarity.
- Tension in the hand: Keep the gesture relaxed; tension can make the sign harder to read.

Practicing in front of a mirror can help you become aware of these common pitfalls and refine your technique.

Usage of the Letter F in Sign Language

Fingerspelling

Fingerspelling is a method used in ASL to spell out words, particularly those that do not have a specific sign or are proper nouns, such as names of people, places, or brands. The letter F is frequently used in fingerspelling, and mastering it is essential for successful communication. Here are some examples of when you might need to use the letter F in fingerspelling:

- Names: If you are introducing yourself or someone else whose name starts with F (e.g., "Frank" or "Fiona").
- Places: When referring to locations like "France" or "Florida."
- Brands: When mentioning brands such as "Ford" or "Fanta."

Combining with Other Signs

The letter F can also be combined with other signs to create meaningful phrases. For instance, if you are discussing a topic that includes the word "friend," you might use the sign for "friend" while incorporating the letter F for emphasis or clarification.

Here are a few examples of words that start with F and their corresponding signs:

- Friend: The sign for friend involves intersecting your index fingers in a circular motion.
- Family: The sign for family uses both hands to create a circular motion near the chin.
- Food: The sign for food involves placing your dominant hand near your mouth.

Combining the letter F with these signs can enhance clarity in conversation.

Importance of the Letter F in Communication

Building Vocabulary

The letter F serves as a building block for vocabulary in sign language. By mastering the letter and its applications, learners can expand their lexicon significantly. This is particularly important for new signers who are still becoming familiar with the language. Learning to fingerspell effectively and accurately can lead to more fluid conversations and a deeper understanding of the language.

Facilitating Understanding

Using the letter F in sign language can help facilitate understanding, especially in noisy environments or situations where verbal communication is challenging. For example, in a crowded space, using fingerspelling can help convey important information without the need for loud speech. This is particularly useful in scenarios like classrooms, meetings, or social gatherings.

Tips for Learning and Practicing the Letter F

Practice Regularly

To become proficient in signing the letter F, practice regularly. Here are some effective techniques:

- Daily Practice: Dedicate a few minutes each day to practice forming the letter F and fingerspelling words that start with it.
- Record Yourself: Use a camera or smartphone to record your signing. This can help you identify areas for improvement.
- Engage with the Community: Interact with deaf communities or sign language groups to gain real-world experience and feedback on your signing.

Utilize Resources

There are many resources available for learning sign language, including:

- Online Courses: Websites like ASL University and YouTube offer free tutorials and lessons for beginners.
- Books and Guides: Consider investing in sign language textbooks that cover the basics, including fingerspelling.
- Mobile Apps: Apps like "ASL App" provide interactive learning experiences, including

fingerspelling practice.

Find a Study Partner

Learning sign language can be more effective when done with a partner. Here are some benefits of finding a study partner:

- Feedback: A partner can provide constructive feedback on your signing technique.
- Practice Conversations: Engaging in conversation using sign language can help reinforce your learning.
- Motivation: Having a partner can keep you motivated and accountable in your learning journey.

Conclusion

The letter F in sign language plays a crucial role in communication, from fingerspelling to building vocabulary and facilitating understanding. Mastering the formation of the letter F is essential for anyone learning ASL or other sign languages, as it opens up a world of possibilities for interaction and expression. Through regular practice, utilizing available resources, and engaging with the community, learners can enhance their skills and confidence in using the letter F and sign language as a whole. Whether you are connecting with friends, family, or new acquaintances, the ability to effectively use the letter F will serve you well in your journey to becoming proficient in sign language.

Frequently Asked Questions

What is the handshape for the letter 'F' in American Sign Language (ASL)?

In ASL, the handshape for the letter 'F' is made by touching the tip of your thumb to the tip of your index finger while keeping the other three fingers extended.

How do you sign the letter 'F' in British Sign Language (BSL)?

In BSL, the handshape for the letter 'F' is similar to ASL, where the thumb and index finger touch to form a circle, with the other fingers extended.

Can the letter 'F' be signed with both hands in sign language?

Yes, in some contexts, you can use both hands to sign the letter 'F' for emphasis or clarity, but typically, it is signed with one hand.

What are some common words that start with the letter 'F' in sign language?

Common words that start with 'F' include 'friend', 'family', 'fun', and 'food'. Each of these words has its own specific sign in ASL.

Is the letter 'F' signed differently in other sign languages?

Yes, different sign languages may have varying signs for the letter 'F', so it's important to learn the specific handshape used in the sign language you are studying.

How can I practice signing the letter 'F' effectively?

You can practice signing the letter 'F' by mirroring a video of someone demonstrating it, using a mirror to check your form, and incorporating it into simple words and sentences.

Are there online resources to learn the letter 'F' in sign language?

Yes, there are many online resources including YouTube tutorials, sign language apps, and websites dedicated to teaching ASL and other sign languages that include the letter 'F'.

Find other PDF article:

<https://soc.up.edu.ph/16-news/files?docid=cjK34-6533&title=culture-war-the-myth-of-a-polarized-america.pdf>

[Letter F In Sign Language](#)

Letter F - Sign

Letter F Sign Language
Letter F Sign Language ...

Letter to Editor Previous Year Questions Class 10, 12

May 28, 2025 · CBSE Class 10, 12 English Letter to Editor Questions (with model answers) from previous years question papers Letter to Editor Previous Year Questions with answers - A Letter to the editor of a newspaper is written to seek help of the publication to raise concern about a problem or social issue.

Letter Writing - Types, Format, Examples - SuccessCDs

Feb 21, 2025 · Letter Writing in English. Check out what is a Letter, types of letters, tips to write good letters, solved examples of Letter writing in English.

Article Review Letter - Sign

Jan 21, 2014 · Article Review Letter ...

Letter " " ...

The Letter Previous Years Question with Answers (2017 to 2025)

Jan 8, 2025 · The Letter question answers from previous years question papers (2025 to 2017). CBSE Class 10 English Communicative Book Chapter 3 The Letter Questions asked in previous years Board Exam from 2017 to 2025.

Nano Letters 2 -

Mar 20, 2025 · 2025 Nano Letters 2 ...

cover letter -

Cover letter @ ...

Formal Letter Writing Previous Year Questions Class 10, 12 ...

May 29, 2025 · Formal Letter Writing Previous Year Questions with answers – In class 10 and 12, students have to write a formal letter which can be a letter to the editor, principal, government, police, RWA, Complaint letter, order letter or inquiry letter.

A Letter to God Previous Years Question with Answers (2019 to ...

Sep 27, 2024 · A Letter to God question answers from previous years question papers (2025 to 2019). CBSE Class 10 First Flight Book Chapter 1 A Letter to God Questions asked in previous years Board Exam from 2019 to 2025.

Order Letters Previous Year Questions Class 10 English

May 31, 2025 · Related: Letter to Police Previous Year Questions Letter to the Government Previous Year Questions Formal Letter Writing Previous Year Questions Complaint Letter Previous Year Questions 10 Examples of Order Letter Order Letter Format and Samples Previous Year's Class 10 English 'Order Letter' Questions Q1. You are Punit/Punita of Eric India Pvt. ...

letter -

Letter ...

Letter to Editor Previous Year Questions Class 10, 12 ... - Succes...

May 28, 2025 · CBSE Class 10, 12 English Letter to Editor Questions (with model answers) from previous years question ...

Letter Writing - Types, Format, Examples - SuccessCDs

Feb 21, 2025 · Letter Writing in English. Check out what is a Letter, types of letters, tips to write good letters, solved examples of ...

ArticleReviewLetter -

Jan 21, 2014 · Article Review ...

The Letter Previous Years Question with Answers (2017 to 2025)

Jan 8, 2025 · The Letter question answers from previous years question papers (2025 to 2017). CBSE Class 10 English Communicative Book ...

Discover how to sign the letter F in sign language with our easy-to-follow guide. Enhance your

communication skills today! Learn more now.

[Back to Home](#)