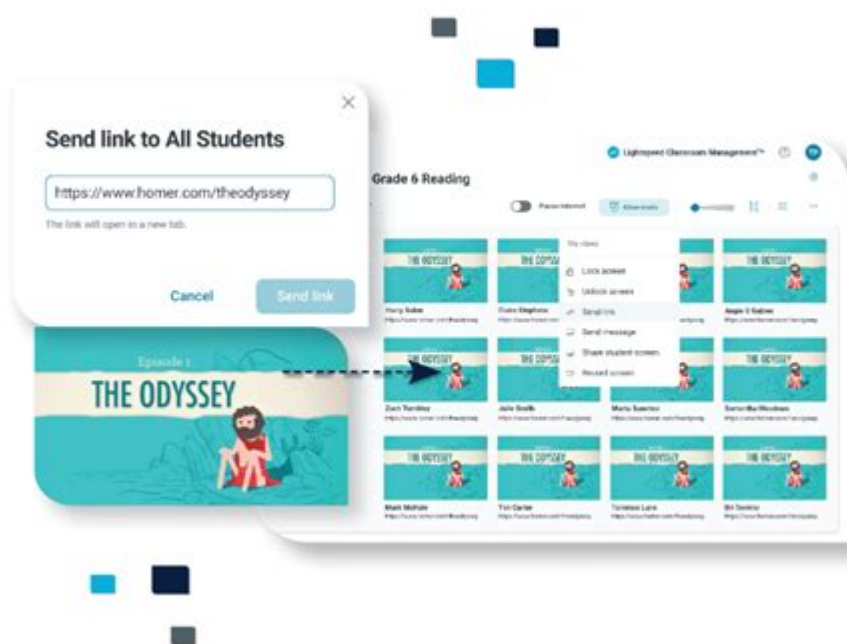


Lightspeed Systems Classroom Management



Lightspeed Systems Classroom Management is revolutionizing the way educators interact with technology in the classroom. In an era where digital learning environments are becoming the norm, effective classroom management tools are essential for fostering an engaging and productive atmosphere. Lightspeed Systems offers a comprehensive suite of features designed to help teachers monitor, manage, and enhance student learning experiences, all while maintaining a focus on safety and security. This article delves into the various components of Lightspeed Systems Classroom Management, its benefits, and how it can transform educational settings.

What is Lightspeed Systems Classroom Management?

Lightspeed Systems Classroom Management is an innovative software solution tailored for educational institutions. It provides teachers with a range of tools to oversee student activity on their devices, whether they are using laptops, tablets, or smartphones. The platform enables real-time monitoring and interaction, allowing educators to create an environment conducive to learning.

Core Features of Lightspeed Systems Classroom Management

Lightspeed Systems Classroom Management encompasses several key features that facilitate effective classroom oversight:

- **Real-Time Monitoring:** Teachers can view student screens in real time, allowing them to

gauge engagement and understanding instantly.

- **Screen Sharing:** Educators can share their screens with students to demonstrate concepts or showcase resources, fostering collaborative learning.
- **Content Filtering:** The solution provides robust content filtering options to ensure students stay focused on educational materials and are shielded from inappropriate content.
- **Messaging:** A built-in messaging system enables teachers to communicate with students directly, facilitating questions and clarifications.
- **Device Management:** The platform supports seamless device management, ensuring that all devices connected to the classroom network are secure and functioning optimally.
- **Attendance Tracking:** Teachers can easily keep track of student attendance through the system, simplifying record-keeping and reporting.

Benefits of Using Lightspeed Systems Classroom Management

Implementing Lightspeed Systems Classroom Management offers numerous advantages for educators and students alike. Here are some of the most significant benefits:

Enhanced Engagement

With real-time monitoring and interactive tools, teachers can actively engage students during lessons. The ability to see what students are working on helps identify those who may need additional support, allowing for timely intervention. Engaged students are more likely to retain information and participate actively in discussions.

Increased Productivity

By minimizing distractions through content filtering and device management, Lightspeed Systems helps create a focused learning environment. Students can concentrate on their assignments without the temptation of wandering off to non-educational websites or applications. This increased productivity translates to better academic performance.

Improved Classroom Dynamics

The messaging feature fosters open communication between teachers and students, promoting a collaborative atmosphere. Students can ask questions privately, enabling shy or reluctant learners to

seek help without feeling singled out. This can lead to a more inclusive classroom dynamic.

Streamlined Administration

The platform's attendance tracking and reporting capabilities simplify administrative tasks for educators. Teachers can quickly generate reports, monitor class attendance, and ensure compliance with institutional policies, freeing up valuable time for instruction and interaction with students.

How to Implement Lightspeed Systems Classroom Management

Implementing Lightspeed Systems Classroom Management requires careful planning and execution. Here are the steps to ensure a smooth rollout:

1. **Assess Needs:** Determine the specific needs of your educational institution. Consider factors such as the number of devices, types of content to filter, and the level of monitoring required.
2. **Get Buy-In:** Engage with teachers, administrators, and IT staff to gain support for the implementation. Highlight the benefits and address any concerns they may have.
3. **Training:** Provide comprehensive training for all users, including teachers and IT staff. Familiarity with the platform will maximize its effectiveness and ease of use.
4. **Monitor and Adjust:** After implementation, continuously monitor the system's effectiveness. Gather feedback from users and make adjustments as needed to optimize performance.

Best Practices for Using Lightspeed Systems Classroom Management

To fully leverage the capabilities of Lightspeed Systems Classroom Management, educators should consider the following best practices:

Establish Clear Guidelines

Before using the platform, set clear expectations for students regarding device usage and online behavior. Communicate these guidelines effectively to ensure everyone understands the classroom's digital norms.

Utilize All Features

Take advantage of the comprehensive features offered by the platform. Regularly use real-time monitoring, screen sharing, and messaging to create an interactive and engaging classroom environment.

Encourage Student Feedback

Encourage students to provide feedback on their experiences using the platform. Their insights can help identify areas for improvement and enhance the overall classroom experience.

Stay Updated

Keep abreast of updates and new features released by Lightspeed Systems. Technology is constantly evolving, and staying informed allows educators to utilize the latest tools for classroom management.

The Future of Classroom Management with Lightspeed Systems

As technology continues to advance, the role of classroom management tools like Lightspeed Systems will only become more critical. The demand for effective monitoring and management solutions is rising, particularly as hybrid and remote learning environments become more prevalent. Lightspeed Systems is well-positioned to lead the way in providing innovative solutions that enhance the learning experience for students and teachers alike.

In conclusion, **Lightspeed Systems Classroom Management** stands out as a powerful tool for educators seeking to improve classroom dynamics, enhance student engagement, and streamline administrative tasks. By leveraging its robust features and adhering to best practices, schools can create a digital learning environment that promotes safety, productivity, and academic success. As the educational landscape continues to evolve, investing in effective classroom management solutions is essential for fostering meaningful learning experiences.

Frequently Asked Questions

What is Lightspeed Systems Classroom Management?

Lightspeed Systems Classroom Management is a software solution designed to help educators manage classroom activities, monitor student engagement, and facilitate a more interactive learning environment through tools for screen sharing, monitoring student devices, and controlling application usage.

Feb 18, 2025 · [G517 LIGHTSPEED TKL](#) [開箱評測](#),[客觀評價](#)[客觀評論](#)[客觀心得](#)[客觀分享](#)[客觀推薦](#)
[開箱](#)[449](#)[598](#)[699](#)[899](#)[開箱](#) ...

Jun 2, 2023 · Lightspeed 10 20 ...

Feb 23, 2021 · LightSpeed 1ms

Jul 10, 2024 · [G309 LIGHTSPEED](https://www.expreview.com/94732.html),<https://www.expreview.com/94732.html>
G309 ...

```

G703lightspeed
...

```

G502X Lightspeed DPI 25,600 ...

1000Hz 1000/Bolt 1
 6 Lightspeed ...

Aug 8, 2022 · G304 ...

Dec 2, 2024 · 000G0000000000,00G30400000000win110000000000“00”000000lightspeed receiver00000“00000”000000 ...

Nov 23, 2022 · `lightspeedbolt`, `lightspeedbolt` `lightspeedbolt` `lightspeedbolt` ...

Feb 18, 2025 · [G517 LIGHTSPEED TKL](#) [開箱評測](#),[客觀評價](#)[客觀評論](#)[客觀心得](#)[客觀分享](#)[客觀推薦](#)
[開箱](#)[449](#)[598](#)[699](#)[899](#)[開箱](#) ...

Jun 2, 2023 · Lightspeed 10 20 ...

Feb 23, 2021 · LightSpeed 1ms

Jul 10, 2024 · [G309 LIGHTSPEED](https://www.expreview.com/94732.html),<https://www.expreview.com/94732.html>

LightSpeed Systems G309 ...

LightSpeed Systems G703 LIGHTSPEED -

LightSpeed Systems G703 LIGHTSPEED -
LightSpeed Systems G703 LIGHTSPEED -
LightSpeed Systems G703 LIGHTSPEED -

LightSpeed Systems G502 X LIGHTSPEED -

LightSpeed Systems G502 X LIGHTSPEED -
LightSpeed Systems G502 X LIGHTSPEED -
LightSpeed Systems G502 X LIGHTSPEED -

LightSpeed Systems USB -

LightSpeed Systems USB -
LightSpeed Systems USB -
LightSpeed Systems USB -

LightSpeed Systems G304 -

Aug 8, 2022 · LightSpeed Systems G304 -

Discover how Lightspeed Systems classroom management enhances learning environments

[Back to Home](#)