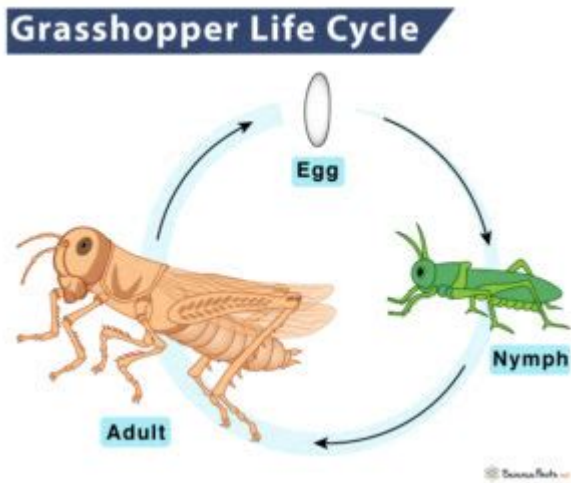


Life Cycle Of A Grasshopper



THE LIFE CYCLE OF A GRASSHOPPER IS A FASCINATING JOURNEY THAT ENCAPSULATES VARIOUS STAGES OF DEVELOPMENT, SHOWCASING THE INCREDIBLE ADAPTABILITY AND RESILIENCE OF THESE INSECTS. GRASSHOPPERS BELONG TO THE ORDER ORTHOPTERA, WHICH ALSO INCLUDES CRICKETS AND LOCUSTS. UNDERSTANDING THEIR LIFE CYCLE NOT ONLY HIGHLIGHTS THEIR BIOLOGICAL PROCESSES BUT ALSO UNDERSCORES THEIR ROLE IN ECOSYSTEMS AS HERBIVORES, PREY FOR PREDATORS, AND INDICATORS OF ENVIRONMENTAL HEALTH. THIS ARTICLE WILL DELVE INTO THE INTRICATE STAGES OF A GRASSHOPPER'S LIFE, INCLUDING THEIR EGG, NYMPH, AND ADULT PHASES, WHILE ALSO EXPLORING THEIR HABITAT, BEHAVIOR, AND ECOLOGICAL SIGNIFICANCE.

OVERVIEW OF GRASSHOPPERS

GRASSHOPPERS ARE PRIMARILY TERRESTRIAL INSECTS KNOWN FOR THEIR LONG HIND LEGS, WHICH THEY USE FOR JUMPING. THEY ARE TYPICALLY GREEN OR BROWN, ALLOWING THEM TO BLEND INTO THEIR SURROUNDINGS, PROVIDING CAMOUFLAGE FROM PREDATORS. GRASSHOPPERS ARE FOUND IN VARIOUS HABITATS, INCLUDING GRASSLANDS, FORESTS, AND WETLANDS, AND THEY PRIMARILY FEED ON GRASSES AND OTHER VEGETATION.

THE LIFE CYCLE STAGES OF A GRASSHOPPER

GRASSHOPPERS UNDERGO INCOMPLETE METAMORPHOSIS, WHICH CONSISTS OF THREE MAIN STAGES:

1. EGG STAGE
2. NYMPH STAGE
3. ADULT STAGE

1. EGG STAGE

THE LIFE CYCLE OF A GRASSHOPPER BEGINS WITH THE EGG STAGE, WHICH IS A CRUCIAL PHASE FOR DEVELOPMENT. HERE ARE SOME KEY ASPECTS OF THIS STAGE:

- **EGG LAYING:** FEMALE GRASSHOPPERS TYPICALLY LAY THEIR EGGS IN LATE SUMMER OR EARLY FALL. THEY DEPOSIT THEIR EGGS IN A FROTHY SUBSTANCE CALLED AN OOTHECA, WHICH HARDENS TO PROTECT THE EGGS FROM PREDATORS AND ENVIRONMENTAL

CONDITIONS.

- **EGG CHARACTERISTICS:** EACH EGG POD CAN CONTAIN ANYWHERE FROM 15 TO 100 EGGS, DEPENDING ON THE SPECIES. THE EGGS ARE USUALLY ELONGATED AND VARY IN COLOR FROM LIGHT BROWN TO GREENISH.
- **INCUBATION PERIOD:** THE EGGS UNDERGO A PERIOD OF DORMANCY THROUGH THE WINTER MONTHS, REQUIRING SPECIFIC TEMPERATURE AND MOISTURE LEVELS TO STIMULATE HATCHING. THE INCUBATION PERIOD CAN LAST ANYWHERE FROM SEVERAL WEEKS TO SEVERAL MONTHS, DEPENDING ON ENVIRONMENTAL CONDITIONS.

2. NYMPH STAGE

ONCE THE EGGS HATCH, GRASSHOPPERS EMERGE AS NYMPHS. THIS STAGE IS MARKED BY SEVERAL DISTINCT CHARACTERISTICS:

- **APPEARANCE:** NYMPHS RESEMBLE MINIATURE VERSIONS OF ADULT GRASSHOPPERS BUT LACK FULLY DEVELOPED WINGS AND REPRODUCTIVE ORGANS. THEY ARE TYPICALLY SMALLER AND MAY HAVE DIFFERENT COLORATION.
- **GROWTH PROCESS:** NYMPHS GO THROUGH A SERIES OF MOLTS, KNOWN AS INSTARS, SHEDDING THEIR EXOSKELETON TO GROW. THIS PROCESS CAN INCLUDE ANYWHERE FROM 5 TO 12 MOLTS, DEPENDING ON THE SPECIES AND ENVIRONMENTAL CONDITIONS. EACH MOLT ALLOWS THE NYMPH TO INCREASE IN SIZE AND DEVELOP MORE ADULT-LIKE FEATURES.
- **FEEDING HABITS:** NYMPHS ARE VORACIOUS EATERS, PRIMARILY CONSUMING GRASSES AND LEAVES. THEIR FEEDING BEHAVIOR CAN SIGNIFICANTLY IMPACT PLANT COMMUNITIES AND AGRICULTURAL CROPS, MAKING THEM BOTH BENEFICIAL AND DETRIMENTAL IN DIFFERENT CONTEXTS.
- **DURATION:** THE NYMPH STAGE CAN LAST FROM A FEW WEEKS TO SEVERAL MONTHS, DEPENDING ON FACTORS SUCH AS TEMPERATURE, HUMIDITY, AND AVAILABILITY OF FOOD.

3. ADULT STAGE

AFTER COMPLETING THE NYMPH STAGE, GRASSHOPPERS TRANSITION INTO ADULTHOOD. THIS FINAL STAGE IS CHARACTERIZED BY:

- **MATURATION:** ADULT GRASSHOPPERS HAVE FULLY DEVELOPED WINGS AND REPRODUCTIVE SYSTEMS, ALLOWING THEM TO MATE AND REPRODUCE. MATURATION TYPICALLY OCCURS IN LATE SUMMER.
- **LIFESPAN:** THE LIFESPAN OF ADULT GRASSHOPPERS VARIES BY SPECIES BUT GENERALLY RANGES FROM A FEW MONTHS TO A YEAR. DURING THIS TIME, THEY CAN REPRODUCE MULTIPLE TIMES.
- **MATING BEHAVIOR:** MATING USUALLY OCCURS IN THE LATE SUMMER, WITH MALES USING COURTSHIP DISPLAYS AND SONGS TO ATTRACT FEMALES. AFTER MATING, FEMALES WILL BEGIN THE CYCLE AGAIN BY LAYING EGGS.
- **ECOLOGICAL ROLE:** AS ADULTS, GRASSHOPPERS PLAY A CRITICAL ROLE IN THE ECOSYSTEM. THEY SERVE AS A FOOD SOURCE FOR MANY PREDATORS, INCLUDING BIRDS, REPTILES, AND MAMMALS, AND CONTRIBUTE TO THE NUTRIENT CYCLING OF THEIR HABITATS THROUGH THEIR FEEDING ACTIVITIES.

ENVIRONMENTAL FACTORS INFLUENCING GRASSHOPPER LIFE CYCLE

SEVERAL ENVIRONMENTAL FACTORS CAN SIGNIFICANTLY IMPACT THE LIFE CYCLE OF GRASSHOPPERS:

- **TEMPERATURE:** GRASSHOPPERS THRIVE IN WARM CLIMATES, AND TEMPERATURE PLAYS A CRUCIAL ROLE IN THEIR DEVELOPMENT. WARMER TEMPERATURES CAN ACCELERATE GROWTH AND DEVELOPMENT, LEADING TO A SHORTER LIFE CYCLE.
- **MOISTURE:** AVAILABILITY OF MOISTURE IS VITAL FOR THE SURVIVAL OF BOTH EGGS AND NYMPHS. DROUGHT CONDITIONS CAN LEAD TO HIGHER MORTALITY RATES DURING THE EGG STAGE AND REDUCED FOOD AVAILABILITY FOR NYMPHS.
- **FOOD AVAILABILITY:** THE ABUNDANCE AND TYPE OF VEGETATION CAN INFLUENCE GROWTH RATES AND REPRODUCTIVE SUCCESS. ADEQUATE FOOD SUPPLY ALLOWS FOR SUCCESSFUL MOLTS AND MATING, WHILE SCARCITY CAN LEAD TO STUNTED GROWTH OR STARVATION.

GRASSHOPPER BEHAVIOR AND ADAPTATIONS

GRASSHOPPERS HAVE DEVELOPED VARIOUS BEHAVIORS AND ADAPTATIONS THAT AID IN THEIR SURVIVAL:

- CAMOUFLAGE: THEIR COLORATION HELPS THEM BLEND INTO THEIR SURROUNDINGS, MAKING IT HARDER FOR PREDATORS TO SPOT THEM.
- JUMPING ABILITY: THEIR POWERFUL HIND LEGS ALLOW FOR QUICK ESCAPES FROM PREDATORS, MAKING THEM AGILE AND DIFFICULT TO CATCH.
- SWARMING BEHAVIOR: SOME SPECIES OF GRASSHOPPERS, PARTICULARLY LOCUSTS, CAN EXHIBIT SWARMING BEHAVIOR UNDER CERTAIN ENVIRONMENTAL CONDITIONS. THIS PHENOMENON CAN LEAD TO MASSIVE SWARMS THAT CAN DEVASTATE CROPS AND NATURAL VEGETATION.

ECOLOGICAL IMPORTANCE OF GRASSHOPPERS

GRASSHOPPERS PLAY A VITAL ROLE IN ECOSYSTEMS FOR SEVERAL REASONS:

- HERBIVORY: AS HERBIVORES, GRASSHOPPERS HELP CONTROL PLANT POPULATIONS, CONTRIBUTING TO THE BALANCE OF PLANT COMMUNITIES.
- FOOD SOURCE: THEY SERVE AS PREY FOR A VARIETY OF ANIMALS, INCLUDING BIRDS, MAMMALS, AND INSECTS, THEREBY SUPPORTING THE FOOD WEB.
- SOIL HEALTH: THROUGH THEIR FEEDING AND MOVEMENT, GRASSHOPPERS CONTRIBUTE TO SOIL AERATION AND NUTRIENT CYCLING, PROMOTING HEALTHY SOIL ECOSYSTEMS.

CONCLUSION

THE LIFE CYCLE OF A GRASSHOPPER IS A REMARKABLE JOURNEY THAT HIGHLIGHTS THE INTRICATE PROCESSES OF GROWTH AND DEVELOPMENT IN THE ANIMAL KINGDOM. FROM THE EGG STAGE TO ADULTHOOD, EACH PHASE IS INFLUENCED BY ENVIRONMENTAL FACTORS AND PLAYS A SIGNIFICANT ROLE IN THE ECOSYSTEM. GRASSHOPPERS, WITH THEIR UNIQUE ADAPTATIONS AND BEHAVIORS, NOT ONLY CONTRIBUTE TO THE BIODIVERSITY OF OUR PLANET BUT ALSO SERVE AS ESSENTIAL INDICATORS OF ENVIRONMENTAL HEALTH. UNDERSTANDING THEIR LIFE CYCLE CAN HELP US APPRECIATE THE COMPLEXITY OF LIFE AND THE INTERCONNECTEDNESS OF ALL LIVING ORGANISMS. AS WE CONTINUE TO EXPLORE THE MYSTERIES OF NATURE, THE GRASSHOPPER'S JOURNEY SERVES AS A REMINDER OF THE DELICATE BALANCE THAT SUSTAINS LIFE ON EARTH.

FREQUENTLY ASKED QUESTIONS

WHAT ARE THE MAIN STAGES IN THE LIFE CYCLE OF A GRASSHOPPER?

THE LIFE CYCLE OF A GRASSHOPPER CONSISTS OF THREE MAIN STAGES: EGG, NYMPH, AND ADULT.

HOW LONG DOES IT TAKE FOR GRASSHOPPER EGGS TO HATCH?

GRASSHOPPER EGGS TYPICALLY TAKE ABOUT 1 TO 2 WEEKS TO HATCH, DEPENDING ON ENVIRONMENTAL CONDITIONS.

WHAT IS A NYMPH IN THE CONTEXT OF A GRASSHOPPER'S LIFE CYCLE?

A NYMPH IS THE IMMATURE STAGE OF A GRASSHOPPER THAT RESEMBLES A SMALLER VERSION OF THE ADULT BUT LACKS FULLY DEVELOPED WINGS.

HOW MANY TIMES DO GRASSHOPPERS MOLT DURING THEIR NYMPH STAGE?

GRASSHOPPERS USUALLY MOLT 5 TO 6 TIMES DURING THEIR NYMPH STAGE BEFORE REACHING ADULTHOOD.

WHAT ENVIRONMENTAL FACTORS AFFECT THE LIFE CYCLE OF GRASSHOPPERS?

TEMPERATURE, HUMIDITY, AND FOOD AVAILABILITY ARE CRITICAL ENVIRONMENTAL FACTORS THAT INFLUENCE THE GROWTH AND DEVELOPMENT OF GRASSHOPPERS.

AT WHAT AGE DO GRASSHOPPERS TYPICALLY BECOME ADULTS?

GRASSHOPPERS USUALLY REACH ADULTHOOD WITHIN 4 TO 6 WEEKS AFTER HATCHING, DEPENDING ON SPECIES AND ENVIRONMENTAL CONDITIONS.

DO GRASSHOPPERS UNDERGO COMPLETE OR INCOMPLETE METAMORPHOSIS?

GRASSHOPPERS UNDERGO INCOMPLETE METAMORPHOSIS, AS THEY DO NOT HAVE A PUPAL STAGE AND DEVELOP DIRECTLY FROM NYMPHS TO ADULTS.

HOW DO GRASSHOPPERS CONTRIBUTE TO THEIR ECOSYSTEM DURING THEIR LIFE CYCLE?

GRASSHOPPERS PLAY A ROLE IN THEIR ECOSYSTEM BY SERVING AS FOOD FOR VARIOUS PREDATORS AND BY INFLUENCING PLANT GROWTH THROUGH HERBIVORY.

Find other PDF article:

<https://soc.up.edu.ph/35-bold/files?ID=hgs63-8563&title=junkyard-jam-band-diy-musical-instruments-and-noisemakers.pdf>

Life Cycle Of A Grasshopper

Our Christian Life and Ministry —Meeting Workbook

Life and Ministry weekly meeting schedule. Study material for Treasures From God's Word, Apply Yourself to the Field Ministry, Living as Christians.

The Road to Life - JW.ORG

Jul 21, 2025 · Seeking great things for Jehovah from our youth on helps us stay on the road to life.

The Life of Jesus—From His Birth to His Death | Bible Stories

Jesus' birth, events in his childhood and youth. Jesus' baptism, the years of preaching, teaching, and miracles. The death of Jesus Christ.

Guided Bible Study Course - JW.ORG

A free Bible course with a personal instructor but without commitment. You'll get a Bible if you need one along with the interactive Bible study guide "Enjoy Life Forever!"

JW Life and Ministry Meeting Schedule April 21-27, 2025

The blessings that Jehovah showers on his servants during these difficult last days help us to cope and even enrich our life. (Ps 4:3; Pr 10:22) Read the following scriptures.

Appreciate the Gift of Life - JW.ORG

Life can be full of wonderful experiences. Even when we face problems, we can usually enjoy some aspects of life. How can we show that we appreciate the gift of life? And what is the ...

Our Purpose in Life - JW.ORG

Our Purpose in Life At the outset, a brief description of Jehovah's Witnesses and our purpose in life will be helpful. We are an international body of Christians who can be found in more than ...

Enjoy Life Forever!—Introductory Bible Lessons - JW.ORG

Enjoy Life Forever!—Introductory Bible Lessons This brochure can serve as an introduction to your personal Bible study as part of our free Bible study program.

JW Life and Ministry Meeting Schedule July 28-August 3, 2025

A disease outbreak, a natural disaster, civil unrest, war, or persecution can strike suddenly. When adversities occur, the affected Christians pull together to help and encourage one another. ...

Section 2 - JW.ORG

Library Books & Brochures Enjoy Life Forever!—An Interactive Bible Course READ IN

Our Christian Life and Ministry —Meeting Workbook

Life and Ministry weekly meeting schedule. Study material for Treasures From God's Word, Apply Yourself to the Field Ministry, Living as Christians.

The Road to Life - JW.ORG

Jul 21, 2025 · Seeking great things for Jehovah from our youth on helps us stay on the road to life.

The Life of Jesus—From His Birth to His Death | Bible Stories

Jesus' birth, events in his childhood and youth. Jesus' baptism, the years of preaching, teaching, and miracles. The death of Jesus Christ.

Guided Bible Study Course - JW.ORG

A free Bible course with a personal instructor but without commitment. You'll get a Bible if you need one along with the interactive Bible study guide "Enjoy Life Forever!"

JW Life and Ministry Meeting Schedule April 21-27, 2025

The blessings that Jehovah showers on his servants during these difficult last days help us to cope and even enrich our life. (Ps 4:3; Pr 10:22) Read the following scriptures.

Appreciate the Gift of Life - JW.ORG

Life can be full of wonderful experiences. Even when we face problems, we can usually enjoy some aspects of life. How can we show that we appreciate the gift of life? And what is the most important reason for doing that? 1. Why should we appreciate life? We should appreciate life because it is a gift from our loving Father, Jehovah.

Our Purpose in Life - JW.ORG

Our Purpose in Life At the outset, a brief description of Jehovah's Witnesses and our purpose in life will be helpful. We are an international body of Christians who can be found in more than 200 lands throughout the world. Our way of worshiping God involves our entire outlook and manner of life. Since we are convinced that God is a real being, we consider it vital to maintain a close ...

Enjoy Life Forever!—Introductory Bible Lessons - JW.ORG

Enjoy Life Forever!—Introductory Bible Lessons This brochure can serve as an introduction to your personal Bible study as part of our free Bible study program.

JW Life and Ministry Meeting Schedule July 28-August 3, 2025

A disease outbreak, a natural disaster, civil unrest, war, or persecution can strike suddenly. When adversities occur, the affected Christians pull together to help and encourage one another. However, even if we are not affected directly, we feel the pain of our fellow Christians and do our best to assist them. — 1Co 12:25, 26.

Section 2 - JW.ORG

Library Books & Brochures Enjoy Life Forever!—An Interactive Bible Course READ IN

Explore the fascinating life cycle of a grasshopper

[Back to Home](#)