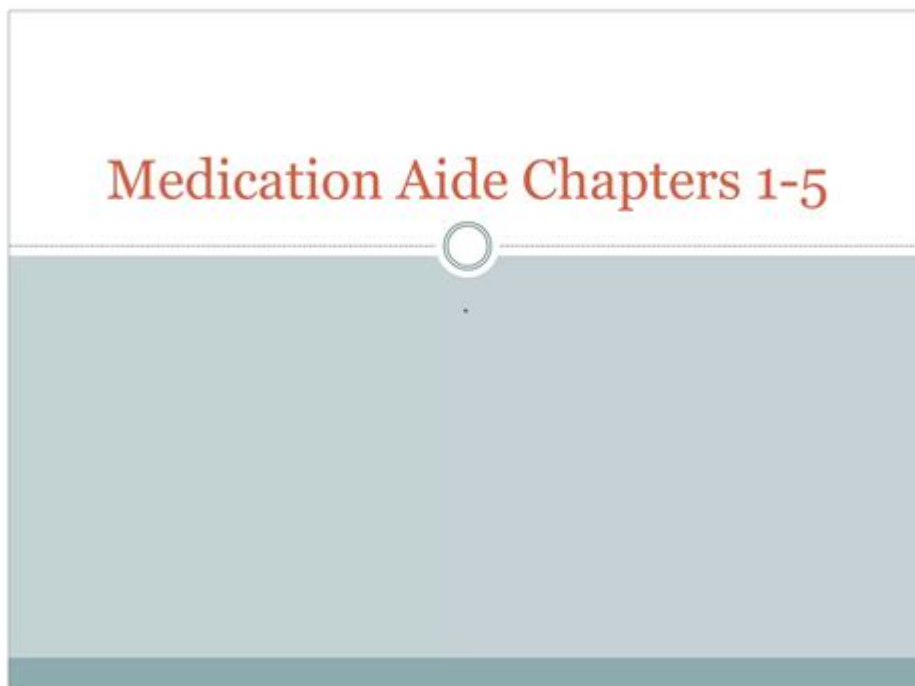


Level 1 Medication Aide Training Missouri



Level 1 medication aide training Missouri is a crucial step for individuals seeking to provide safe and effective medication assistance in various healthcare settings. This training program is designed to equip participants with the necessary skills and knowledge to administer medications in accordance with state regulations. In Missouri, the demand for certified medication aides continues to grow, reflecting the increasing complexities of patient care in facilities such as nursing homes, assisted living centers, and home health environments. This article delves into the essential components of Level 1 medication aide training in Missouri, the requirements for certification, the training process, and the significance of this role in healthcare.

Understanding Level 1 Medication Aide Training

Level 1 medication aides are certified professionals responsible for assisting patients with their medication needs. This training program focuses on ensuring that aides can perform their duties safely and effectively, minimizing the risk of medication errors and enhancing patient outcomes.

What is a Level 1 Medication Aide?

A Level 1 medication aide is a healthcare worker who is trained to administer medications to patients under the supervision of a licensed nurse or physician. The role is pivotal in various healthcare settings, including:

1. Nursing homes
2. Assisted living facilities
3. Home health agencies
4. Hospitals (in certain capacities)

Importance of Medication Aide Training

The significance of Level 1 medication aide training cannot be overstated. Key reasons for its importance include:

- Patient Safety: Proper training ensures that aides understand medication administration protocols, reducing the likelihood of errors.
- Legal Compliance: Aides must comply with state laws and regulations governing medication administration, which this training addresses.
- Enhanced Care: Trained aides can provide better support to patients, contributing to improved health outcomes and overall satisfaction with care.

Requirements for Level 1 Medication Aide Training in Missouri

To enroll in the Level 1 medication aide training program in Missouri, candidates must meet specific requirements, which include:

Eligibility Criteria

1. Age: Candidates must be at least 18 years old.
2. Education: A high school diploma or GED is typically required.
3. Background Check: Applicants must pass a criminal background check to ensure the safety of vulnerable populations.
4. Certification: Candidates must have a current nursing assistant certification in Missouri.

Additional Recommendations

While not mandatory, the following recommendations can enhance a candidate's application:

- Experience in a healthcare setting, particularly as a nursing assistant.
- Strong communication and interpersonal skills.
- A commitment to providing compassionate care.

The Training Process

The Level 1 medication aide training program in Missouri consists of both classroom instruction and hands-on training. These components are designed to provide a well-rounded education that prepares aides for their responsibilities.

Classroom Instruction

Classroom training typically covers a range of topics, including:

- Medication Fundamentals: Understanding different types of medications, their purposes, and potential side effects.
- Medication Administration Techniques: Learning safe methods for administering oral, topical, and inhaled medications.
- Documentation: Proper methods for documenting medication administration and observing patient responses.
- Legal and Ethical Issues: Understanding the legal responsibilities of a medication aide and ethical considerations in patient care.

Training programs often employ various instructional methods, such as lectures, discussions, and multimedia presentations, to engage participants effectively.

Hands-On Training

Hands-on training is critical for developing practical skills. This component may include:

- Simulated Medication Administration: Practice scenarios that allow trainees to administer medications in a controlled environment.
- Supervised Clinical Experience: Opportunities to work under the supervision of licensed professionals in real healthcare settings, applying learned skills.
- Skills Assessments: Regular evaluations to ensure that participants are proficient in medication administration techniques.

Certification Process

Upon successful completion of the training program, candidates must pass a certification exam to become a Level 1 medication aide in Missouri. The certification process includes:

Examination Details

1. Written Exam: Candidates typically take a multiple-choice exam that tests their knowledge of medication administration, safety, and regulations.

2. Skills Evaluation: A practical skills assessment may be required to demonstrate proficiency in administering medications and documenting care.

Maintaining Certification

Once certified, medication aides must adhere to ongoing requirements to maintain their certification, including:

- Continuing Education: Completing a specified number of continuing education hours every two years.
- Renewal Process: Submitting a renewal application and any required fees to the state.

Potential Career Paths for Level 1 Medication Aides

Completing Level 1 medication aide training opens various career opportunities within the healthcare field. Some potential career paths include:

- Long-term Care Facilities: Working in nursing homes or assisted living facilities, providing medication assistance to residents.
- Home Health Care: Assisting patients in their homes, ensuring they take medications as prescribed.
- Healthcare Administration: Opportunities for advancement into supervisory or administrative roles within healthcare settings.

Advancement Opportunities

Level 1 medication aides can also pursue further education and training to advance their careers, such as:

1. Obtaining a Higher Certification: Transitioning to a Level 2 medication aide or pursuing nursing education.
2. Specialized Training: Gaining expertise in areas such as geriatrics or chronic disease management.
3. Leadership Roles: Developing skills for management positions within healthcare facilities.

Conclusion

In summary, Level 1 medication aide training Missouri is a vital component of the healthcare system, ensuring that aides are equipped with the skills and knowledge necessary to provide safe medication assistance. This training not only enhances patient care but also opens doors for career advancement in the healthcare field. With the growing

demand for competent healthcare professionals, completing this training can lead to a rewarding and impactful career in medication administration and patient support. Whether working in nursing homes, assisted living facilities, or home health environments, Level 1 medication aides play a crucial role in improving patient outcomes and ensuring quality care.

Frequently Asked Questions

What is the purpose of Level 1 Medication Aide training in Missouri?

The Level 1 Medication Aide training in Missouri prepares individuals to safely assist with the administration of medications to residents in long-term care facilities.

What are the prerequisites for enrolling in Level 1 Medication Aide training in Missouri?

To enroll in the Level 1 Medication Aide training, candidates must be at least 18 years old, hold a valid nursing assistant certification, and have a high school diploma or equivalent.

How long does Level 1 Medication Aide training typically last in Missouri?

The training usually consists of 40 hours of classroom instruction and clinical practice, which can be completed in one to two weeks depending on the program.

What topics are covered in the Level 1 Medication Aide training course?

The course covers medication administration techniques, understanding different types of medications, dosage calculations, and recognizing adverse effects and medication interactions.

What certification is awarded upon completing Level 1 Medication Aide training in Missouri?

Upon successful completion, participants receive a Level 1 Medication Aide certificate, which qualifies them to assist with medication administration in licensed facilities.

Is there a state exam required after completing Level 1 Medication Aide training?

Yes, after completing the training, candidates must pass a state competency exam to be certified as a Level 1 Medication Aide in Missouri.

How often do Level 1 Medication Aides need to renew their certification in Missouri?

Level 1 Medication Aide certification needs to be renewed every two years, which may require proof of continuing education or work experience.

Can Level 1 Medication Aides administer injections in Missouri?

No, Level 1 Medication Aides in Missouri are not permitted to administer injections; they can only assist with oral, topical, or other non-injection medications.

Where can I find Level 1 Medication Aide training programs in Missouri?

Training programs are available through community colleges, vocational schools, and some long-term care facilities throughout Missouri.

What is the cost of Level 1 Medication Aide training in Missouri?

The cost of training can vary widely, typically ranging from \$200 to \$600, depending on the institution and whether materials are included.

Find other PDF article:

<https://soc.up.edu.ph/02-word/files?dataid=NGr61-2329&title=4th-grade-long-division-worksheet.pdf>

[Level 1 Medication Aide Training Missouri](#)

DX11 feature level 10.0 is required to run_

Nov 21, 2021 · dx11 feature level 10.0 is required
...

in / at / on level | WordReference Forums

Feb 13, 2018 · in/on/at level and I learned that "I am on level number " is used in video games. I also found that at seemed to be the most frequently used preposition for 'level.' Could you ...

-

wordWord20161 ...

CEFR level B2

2 5 CEFR level B2 CEFRThe Common European Framework of Reference for Languages ...

10RAZ, ...
 Nov 7, 2024 · raz,EPM
 Level-2 -
 Level-2Level-1Level-1Level-1
 ...

Unlock your career potential with Level 1 Medication Aide Training in Missouri. Gain essential skills and knowledge. Learn more to start your journey today!

[Back to Home](#)