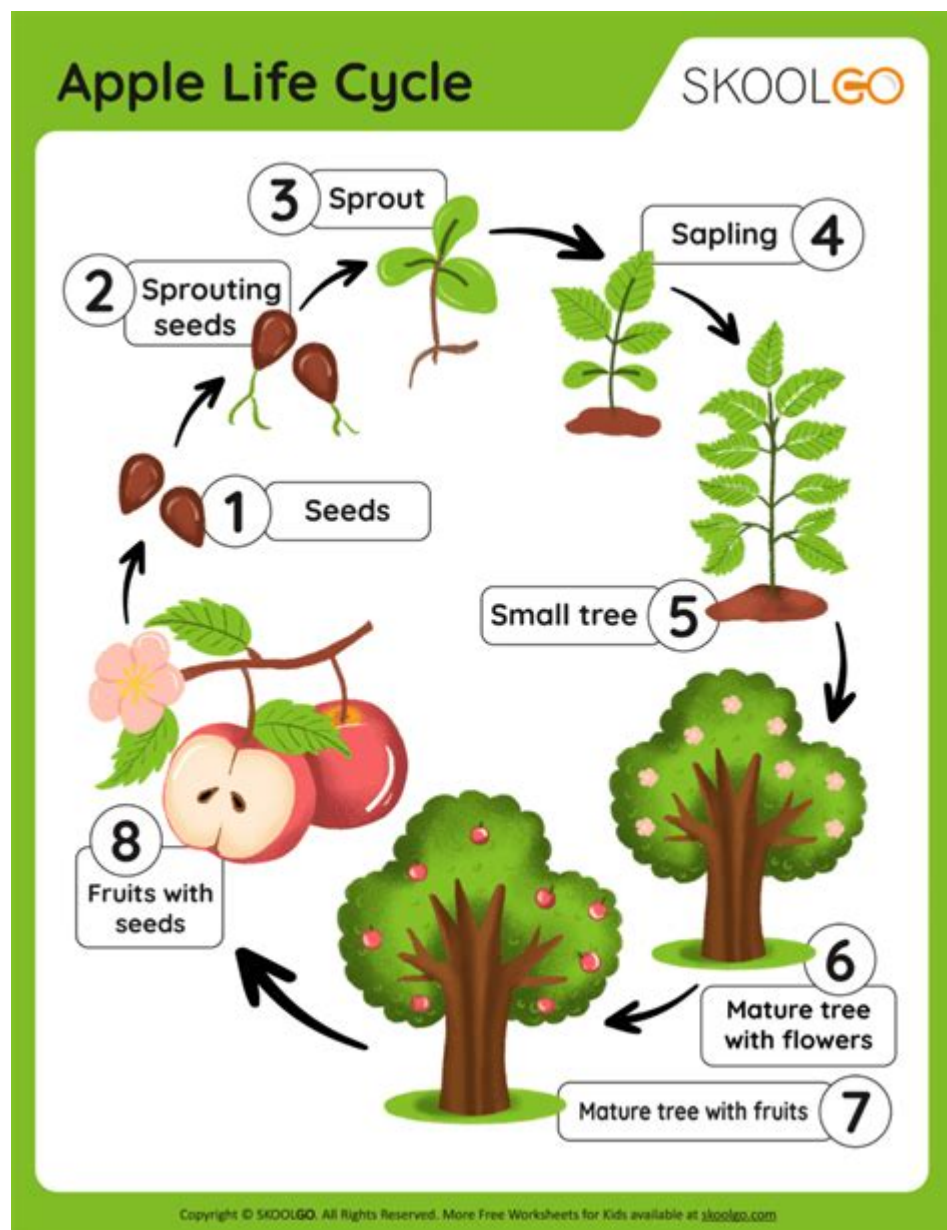


Life Cycle Of An Apple Tree Worksheet



Life cycle of an apple tree worksheet is an engaging educational tool designed to help students understand the fascinating journey of an apple tree from seed to fruit-bearing maturity. This worksheet serves as a practical resource for teachers and parents to teach children about botany, ecology, and the importance of trees in our environment. Through various activities, students can explore the different stages in the life cycle of an apple tree, recognizing how each phase contributes to the tree's growth and its eventual production of apples. In this article, we will delve into the essential components of a life cycle of an apple tree worksheet, the stages of the apple tree's life cycle, and various activities that can enhance learning.

Understanding the Life Cycle of an Apple Tree

The life cycle of an apple tree involves several distinct stages, each critical to the overall

development of the tree. This cycle can be broadly categorized into five primary stages: seed, germination, sapling, mature tree, and fruit-bearing tree. Understanding these stages provides insights into how apple trees grow, reproduce, and contribute to their ecosystems.

Stages of the Life Cycle

1. Seed Stage

- The life cycle begins with the seed, which is formed after pollination and fertilization. Apple seeds are contained within the fruit, and they require specific conditions to germinate.
- Seeds need moisture, warmth, and the right soil conditions to begin the sprouting process.
- Each apple seed has the potential to grow into a new apple tree, given the right environment.

2. Germination

- Germination is the process where the seed absorbs water and swells, eventually breaking through its outer shell.
- During this stage, the root (taproot) begins to grow downward, while the shoot (plumule) grows upward, seeking sunlight.
- Factors affecting germination include temperature, moisture, and soil quality.

3. Sapling Stage

- Once the seed has sprouted, it develops into a sapling. This stage typically lasts several years.
- Saplings have a slender trunk and smaller leaves than mature trees. They require care and protection from pests and diseases.
- During this phase, the tree develops a root system that anchors it and absorbs nutrients and water from the soil.

4. Mature Tree Stage

- After several years of growth, the apple tree reaches maturity. This stage can occur anywhere from 3 to 6 years after planting, depending on the variety and growing conditions.
- Mature trees have a robust trunk and a well-developed canopy, providing shade and habitat for various organisms.
- The tree focuses on growth and health, preparing for the next stage of fruit production.

5. Fruit-Bearing Tree Stage

- In the final stage, the mature apple tree begins to produce flowers, leading to the formation of apples.
- Pollination is essential during this phase. Bees and other pollinators play a crucial role in transferring pollen from flower to flower.
- Once pollinated, the flowers develop into fruits, which mature over the growing season. Each apple contains seeds that can potentially start the cycle anew.

Importance of Each Stage

Understanding the significance of each stage in the life cycle of an apple tree is crucial for appreciating the complexities of plant biology and the role of trees in our environment.

Ecological Contributions

- Air Quality: Apple trees, like other trees, absorb carbon dioxide and release oxygen, contributing to cleaner air.
- Biodiversity: The flowers attract various pollinators, while the fruits provide food for wildlife.
- Soil Health: The root systems of apple trees help prevent soil erosion and improve soil structure, promoting healthier ecosystems.

Agricultural Significance

- Food Production: Apple trees are vital to agriculture, providing a significant source of food for humans and livestock.
- Economic Impact: Apple farming supports local economies, providing jobs and contributing to regional agricultural markets.
- Sustainable Practices: Understanding the life cycle can promote sustainable farming practices, enhancing productivity while protecting natural resources.

Activities for the Worksheet

To make the learning process interactive and enjoyable, the life cycle of an apple tree worksheet can include various activities. These activities not only reinforce knowledge but also engage students in hands-on learning.

1. Life Cycle Diagram

- Task: Draw a diagram illustrating the life cycle stages of an apple tree.
- Instructions: Include labels for each stage and add colors to make the diagram visually appealing.

2. Seed Dissection Activity

- Task: Conduct a seed dissection to observe the different parts of an apple seed.
- Instructions: Use a magnifying glass to examine the seed coat, embryo, and endosperm. Discuss the function of each part.

3. Growth Journal

- Task: Maintain a growth journal documenting the growth of an apple tree over a period of weeks or months.
- Instructions: Record observations, draw sketches, and note changes in height, leaf size, and other characteristics.

4. Pollination Simulation

- Task: Simulate the pollination process using crafts.
- Instructions: Create flower models and use small pom-poms as pollen to demonstrate how pollinators transfer pollen from flower to flower.

5. Role Play as a Tree

- Task: Engage in a role-playing activity where students act out different stages of the apple tree's life cycle.
- Instructions: Assign roles for seeds, saplings, mature trees, and pollinators, and have them interact to demonstrate the life cycle.

6. Research Project

- Task: Conduct a research project on different apple varieties and their growing conditions.
- Instructions: Present findings to the class, highlighting how different conditions affect growth and fruit production.

Conclusion

In conclusion, the life cycle of an apple tree worksheet is an invaluable educational resource that fosters an understanding of plant biology and ecology among students. By engaging in hands-on activities and exploring the various stages of the apple tree's life cycle, learners can develop a deeper appreciation for nature and the role of trees in our environment. This knowledge not only benefits individual students but also contributes to a greater awareness of environmental stewardship and sustainable practices. As future custodians of our planet, understanding such processes is essential for nurturing a love for nature and promoting biodiversity. Through worksheets and interactive activities, educators can inspire a new generation to respect and care for the natural world, starting with the humble yet remarkable apple tree.

Frequently Asked Questions

What are the main stages of the life cycle of an apple tree?

The main stages of the life cycle of an apple tree include seed germination, seedling growth, tree maturation, flowering, fruit development, and seed dispersal.

How can a worksheet help students understand the life cycle

of an apple tree?

A worksheet can provide visual aids, diagrams, and structured activities that guide students through each stage of the apple tree's life cycle, enhancing comprehension and retention.

What are some activities included in a life cycle of an apple tree worksheet?

Activities may include labeling diagrams, sequencing the stages of growth, conducting research on apple varieties, and drawing or modeling the life cycle.

What is the significance of pollination in the life cycle of an apple tree?

Pollination is crucial as it allows for the fertilization of flowers, leading to the formation of apples, which contain seeds for new trees.

At what age does an apple tree typically start producing fruit?

An apple tree usually begins to produce fruit around 3 to 5 years after planting, depending on the variety and growing conditions.

How do environmental factors influence the life cycle of an apple tree?

Environmental factors such as soil quality, climate, water availability, and sunlight play a significant role in the growth, flowering, and fruiting stages of an apple tree.

What can students learn about ecosystems from studying the life cycle of an apple tree?

Students can learn about the interdependence of plants and animals, the importance of biodiversity, and how apple trees contribute to their ecosystems by providing food and habitat.

Find other PDF article:

<https://soc.up.edu.ph/54-tone/Book?trackid=ECR63-4675&title=skeinhead-nick-knight.pdf>

Life Cycle Of An Apple Tree Worksheet

Our Christian Life and Ministry —Meeting Workbook

Life and Ministry weekly meeting schedule. Study material for Treasures From God's Word, Apply Yourself to the Field Ministry, Living as Christians.

The Road to Life - JW.ORG

Jul 21, 2025 · Seeking great things for Jehovah from our youth on helps us stay on the road to life.

The Life of Jesus—From His Birth to His Death | Bible Stories

Jesus' birth, events in his childhood and youth. Jesus' baptism, the years of preaching, teaching, and miracles. The death of Jesus Christ.

Guided Bible Study Course - JW.ORG

A free Bible course with a personal instructor but without commitment. You'll get a Bible if you need one along with the interactive Bible study guide "Enjoy Life Forever!"

JW Life and Ministry Meeting Schedule April 21-27, 2025

The blessings that Jehovah showers on his servants during these difficult last days help us to cope and even enrich our life. (Ps 4:3; Pr 10:22) Read the following scriptures.

Appreciate the Gift of Life - JW.ORG

Life can be full of wonderful experiences. Even when we face problems, we can usually enjoy some aspects of life. How can we show that we appreciate the gift of life? And what is the ...

Our Purpose in Life - JW.ORG

Our Purpose in Life At the outset, a brief description of Jehovah's Witnesses and our purpose in life will be helpful. We are an international body of Christians who can be found in more than ...

Enjoy Life Forever!—Introductory Bible Lessons - JW.ORG

Enjoy Life Forever!—Introductory Bible Lessons This brochure can serve as an introduction to your personal Bible study as part of our free Bible study program.

JW Life and Ministry Meeting Schedule July 28-August 3, 2025

A disease outbreak, a natural disaster, civil unrest, war, or persecution can strike suddenly. When adversities occur, the affected Christians pull together to help and encourage one another. ...

Section 2 - JW.ORG

Library Books & Brochures Enjoy Life Forever!—An Interactive Bible Course READ IN

Our Christian Life and Ministry —Meeting Workbook

Life and Ministry weekly meeting schedule. Study material for Treasures From God's Word, Apply Yourself to the Field Ministry, Living as Christians.

The Road to Life - JW.ORG

Jul 21, 2025 · Seeking great things for Jehovah from our youth on helps us stay on the road to life.

The Life of Jesus—From His Birth to His Death | Bible Stories

Jesus' birth, events in his childhood and youth. Jesus' baptism, the years of preaching, teaching, and miracles. The death of Jesus Christ.

Guided Bible Study Course - JW.ORG

A free Bible course with a personal instructor but without commitment. You'll get a Bible if you need one along with the interactive Bible study guide "Enjoy Life Forever!"

JW Life and Ministry Meeting Schedule April 21-27, 2025

The blessings that Jehovah showers on his servants during these difficult last days help us to cope and even enrich our life. (Ps 4:3; Pr 10:22) Read the following scriptures.

Appreciate the Gift of Life - JW.ORG

Life can be full of wonderful experiences. Even when we face problems, we can usually enjoy some aspects of life. How can we show that we appreciate the gift of life? And what is the ...

Our Purpose in Life - JW.ORG

Our Purpose in Life At the outset, a brief description of Jehovah's Witnesses and our purpose in life will be helpful. We are an international body of Christians who can be found in more than ...

Enjoy Life Forever!—Introductory Bible Lessons - JW.ORG

Enjoy Life Forever!—Introductory Bible Lessons This brochure can serve as an introduction to your personal Bible study as part of our free Bible study program.

JW Life and Ministry Meeting Schedule July 28–August 3, 2025

A disease outbreak, a natural disaster, civil unrest, war, or persecution can strike suddenly. When adversities occur, the affected Christians pull together to help and encourage one another. ...

Section 2 - JW.ORG

Library Books & Brochures Enjoy Life Forever!—An Interactive Bible Course READ IN

Explore the life cycle of an apple tree worksheet to enhance learning about nature's wonders. Discover how each stage develops with our engaging resources!

[Back to Home](#)