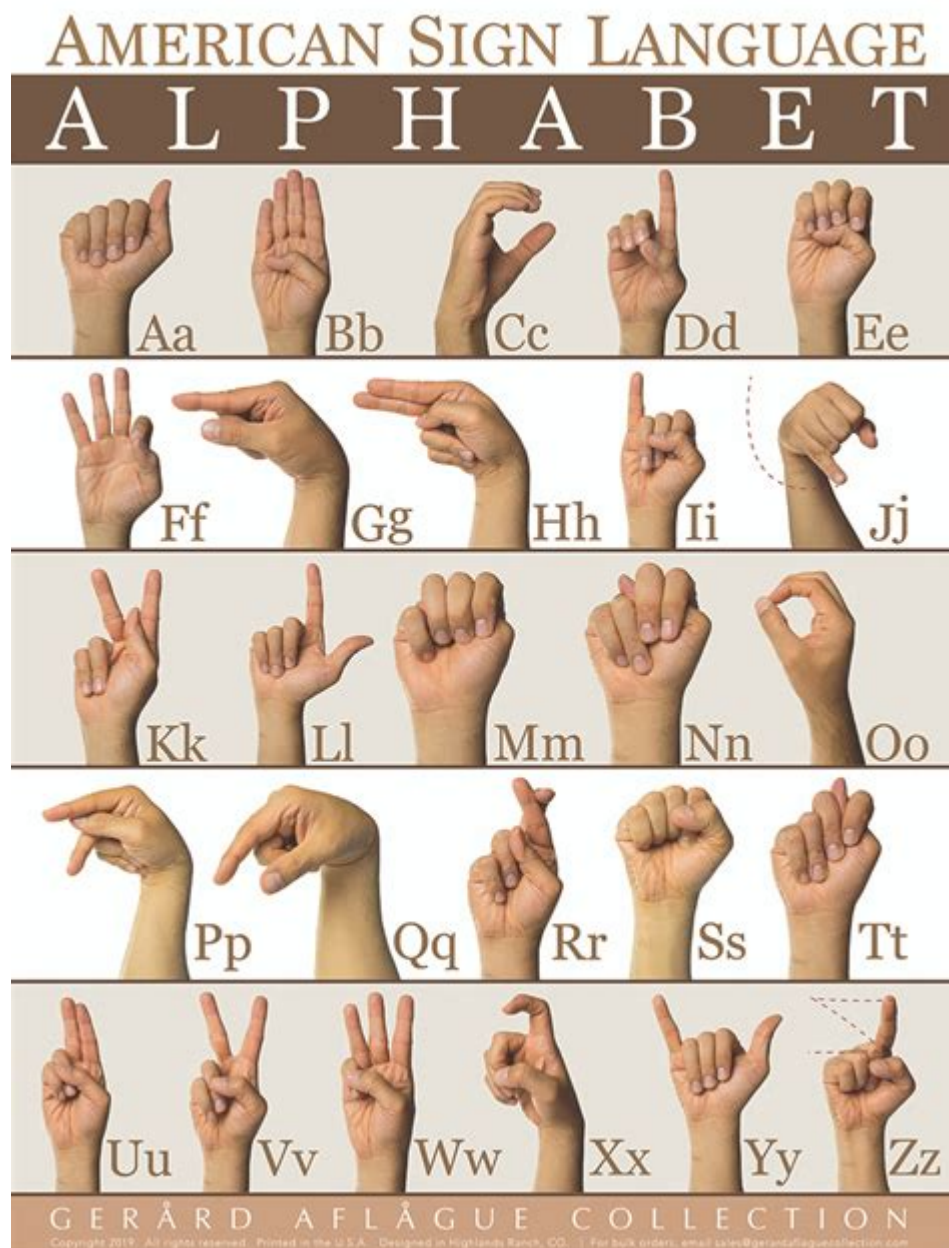


Letter Sign Language Chart



Letter sign language chart is an essential tool for anyone looking to learn sign language, whether for personal, educational, or professional reasons. It serves as a visual representation of the hand signs associated with each letter of the alphabet, making it easier for learners to grasp the basics of sign language communication. This article will explore the significance of letter sign language charts, provide detailed insights into their structure and use, and offer tips for effective learning.

Understanding Letter Sign Language Charts

Letter sign language charts are visual aids that depict the manual signs used to represent each letter of the alphabet in sign languages, such as American Sign Language (ASL) or British Sign Language (BSL). These charts are particularly useful for beginners who are just starting to explore

the world of sign language.

The Importance of Learning Sign Language

Learning sign language is valuable for various reasons:

- **Communication:** It enables effective communication with the deaf and hard-of-hearing communities.
- **Inclusivity:** Promotes inclusivity by fostering understanding and reducing communication barriers.
- **Cognitive Benefits:** Learning a new language enhances cognitive skills such as memory and problem-solving.
- **Career Opportunities:** Proficiency in sign language can open doors to careers in education, healthcare, and social services.

Components of a Letter Sign Language Chart

A letter sign language chart typically includes the following components:

- **Alphabet Letters:** Each letter of the alphabet is displayed, often in uppercase and lowercase forms.
- **Hand Shapes:** Illustrations or photographs showing the specific hand shape for each letter, often accompanied by arrows indicating movement.
- **Phonetic Pronunciation:** Some charts include phonetic spellings to help learners understand how to articulate the corresponding sound.
- **Color Coding:** Various colors may be used to differentiate between vowels and consonants, making the chart easier to navigate.

How to Use a Letter Sign Language Chart

Using a letter sign language chart effectively involves several steps:

1. **Familiarize Yourself with the Chart:** Spend some time reviewing the chart to understand its

layout and components.

2. **Practice Each Letter:** Focus on one letter at a time. Refer to the chart, mimic the hand shape, and repeat the sign until comfortable.
3. **Combine Letters:** Once familiar with individual letters, start combining them to form simple words and phrases.
4. **Use Visual Aids:** Consider watching videos or using apps that reinforce the signs visually and audibly.

Types of Letter Sign Language Charts

There are different types of letter sign language charts, each catering to various needs and learning styles:

Printed Charts

Printed charts are the most common type. They can be found in educational resources, libraries, and online platforms. These charts are often easy to print and display in classrooms or at home.

Digital Charts

Digital charts are available as downloadable PDFs or interactive online resources. These can be more engaging, as they often include animations or videos demonstrating the signs.

Mobile Applications

Numerous mobile apps provide interactive letter sign language charts. These apps often come with quizzes and exercises to reinforce learning, making them a great option for on-the-go practice.

Tips for Learning Sign Language with a Letter Sign Language Chart

To maximize your learning experience with a letter sign language chart, consider the following tips:

1. Consistency is Key

Practice regularly. Set aside dedicated time each day to review the chart and practice the signs. Consistent practice helps reinforce memory.

2. Engage with the Community

Join local or online deaf communities or sign language groups. Engaging with native signers provides practical experience and enhances learning through real-life interactions.

3. Incorporate Visual and Auditory Learning

Supplement your learning with videos and audio resources. Watching sign language interpreters in action can help you understand context, emotion, and proper usage.

4. Use Mnemonics

Create mnemonic devices to remember the signs for each letter. Associating letters with familiar images or phrases can make memorization easier.

5. Be Patient

Learning sign language is a process that takes time. Be patient with yourself and celebrate small milestones along the way.

Conclusion

In conclusion, a **letter sign language chart** is an invaluable resource for anyone interested in learning sign language. By understanding its components, how to use it effectively, and employing the right strategies, learners can build a solid foundation in sign language communication. Whether for personal enrichment, professional development, or fostering inclusivity, mastering sign language opens up a world of connection and understanding. As you embark on this journey, remember that practice, community engagement, and a positive attitude are key to success.

Frequently Asked Questions

What is a letter sign language chart?

A letter sign language chart is a visual representation that illustrates the hand gestures corresponding to each letter of the alphabet used in sign language, helping individuals learn to communicate effectively.

How can I use a letter sign language chart to improve my signing skills?

To improve your signing skills, you can study the chart regularly, practice the hand shapes in front of a mirror, and engage in interactive exercises with others to reinforce your learning.

Are there different letter sign language charts for various sign languages?

Yes, there are different letter sign language charts for various sign languages, such as American Sign Language (ASL), British Sign Language (BSL), and others, as each has its own unique signs and structures.

Where can I find a reliable letter sign language chart online?

Reliable letter sign language charts can be found on educational websites, non-profit organizations dedicated to deaf education, and reputable sign language learning platforms.

Can children learn sign language using a letter sign language chart?

Yes, children can learn sign language using a letter sign language chart, as it provides a fun and engaging way to familiarize them with the alphabet and basic communication in sign language.

Find other PDF article:

<https://soc.up.edu.ph/44-slide/files?trackid=whr93-4631&title=official-language-of-ethiopia.pdf>

[Letter Sign Language Chart](#)

letter -

Letter ...

Letter to Editor Previous Year Questions Class 10, 12 ... - Suc...

May 28, 2025 · CBSE Class 10, 12 English Letter to Editor Questions (with model answers) from previous years question papers Letter to Editor Previous Year ...

Letter Writing - Types, Format, Examples - SuccessCDs

Feb 21, 2025 · Letter Writing in English. Check out what is a Letter, types of letters, tips to write good letters, ...

[Article](#) [Review](#) [Letter](#) [Previous Years Question with Answers \(2017 to 2025\)](#) - [CBSE Class 10 English Communicative Book Chapter 3 The Letter Questions asked in ...](#)

Jan 21, 2014 · Article [Previous Years Question with Answers \(2017 to 2025\)](#) Review [Previous Years Question with Answers \(2017 to 2025\)](#) [Letter](#) [Previous Years Question with Answers \(2017 to 2025\)](#) ...

The Letter Previous Years Question with Answers (2017 to 2025)

Jan 8, 2025 · The Letter question answers from previous years question papers (2025 to 2017). CBSE Class 10 English Communicative Book ...

[Letter](#) [Writing](#) [Types](#) [Format](#) [Examples](#) - [SuccessCDs](#)

[Letter](#) [Writing](#) [Types](#) [Format](#) [Examples](#) - [SuccessCDs](#) [Letter](#) [Writing](#) [Types](#) [Format](#) [Examples](#) - [SuccessCDs](#) ...

[Letter to Editor Previous Year Questions Class 10, 12 ... - SuccessCDs](#)

May 28, 2025 · CBSE Class 10, 12 English Letter to Editor Questions (with model answers) from previous years question papers Letter to Editor Previous Year Questions with answers - A ...

Letter Writing - Types, Format, Examples - SuccessCDs

Feb 21, 2025 · Letter Writing in English. Check out what is a Letter, types of letters, tips to write good letters, solved examples of Letter writing in English.

[Article](#) [Review](#) [Letter](#) [Previous Years Question with Answers \(2017 to 2025\)](#) - [CBSE Class 10 English Communicative Book Chapter 3 The Letter Questions asked in ...](#)

Jan 21, 2014 · Article [Previous Years Question with Answers \(2017 to 2025\)](#) Review [Previous Years Question with Answers \(2017 to 2025\)](#) [Letter](#) [Previous Years Question with Answers \(2017 to 2025\)](#) ...

The Letter Previous Years Question with Answers (2017 to 2025)

Jan 8, 2025 · The Letter question answers from previous years question papers (2025 to 2017). CBSE Class 10 English Communicative Book Chapter 3 The Letter Questions asked in ...

[Nano Letters](#) [2](#) [?](#) - [CBSE Class 10 English Communicative Book Chapter 3 The Letter Questions asked in ...](#)

Mar 20, 2025 · [Nano Letters](#) [2](#) [?](#) [CBSE Class 10 English Communicative Book Chapter 3 The Letter Questions asked in ...](#)

[cover letter](#) [writing](#) [types](#) [format](#) [examples](#) - [SuccessCDs](#)

[Cover letter](#) [writing](#) [types](#) [format](#) [examples](#) - [SuccessCDs](#) [Cover letter](#) [writing](#) [types](#) [format](#) [examples](#) - [SuccessCDs](#) ...

[Formal Letter Writing Previous Year Questions Class 10, 12 English ...](#)

May 29, 2025 · Formal Letter Writing Previous Year Questions with answers - In class 10 and 12, students have to write a formal letter which can be a letter to the editor, principal, government, ...

[A Letter to God Previous Years Question with Answers \(2019 to 2025\)](#)

Sep 27, 2024 · A Letter to God question answers from previous years question papers (2025 to 2019). CBSE Class 10 First Flight Book Chapter 1 A Letter to God Questions asked in ...

[Order Letters Previous Year Questions Class 10 English](#)

May 31, 2025 · Related: Letter to Police Previous Year Questions Letter to the Government Previous Year Questions Formal Letter Writing Previous Year Questions Complaint Letter ...

Discover our comprehensive letter sign language chart

[Back to Home](#)