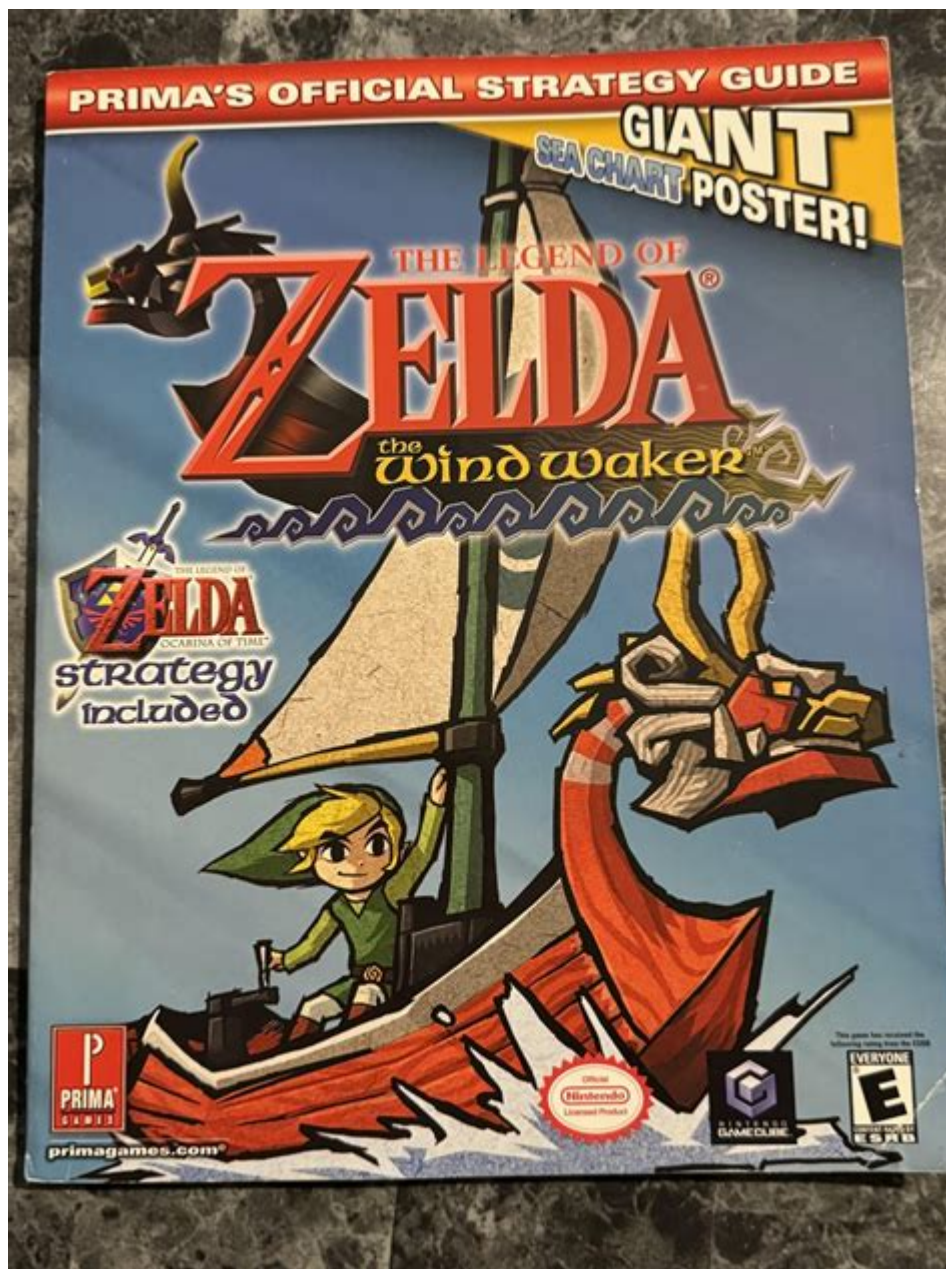


Legend Of Zelda Wind Waker Guide



Legend of Zelda: Wind Waker Guide

The Legend of Zelda: Wind Waker is a beloved title in the Zelda franchise, known for its unique cel-shaded graphics, expansive ocean exploration, and engaging story. Released for the GameCube in 2002 and later remastered for the Wii U in 2013, Wind Waker offers a captivating experience for both new players and series veterans. This guide aims to provide you with essential tips, strategies, and walkthroughs to help you navigate the vast world of Hyrule and beyond.

Getting Started

Before diving into the game, it's important to familiarize yourself with the basic mechanics, controls, and story premise.

Story Overview

In Wind Waker, you play as Link, a young boy living on Outset Island. The game begins on the day of your coming-of-age ceremony, where you are tasked with rescuing your sister, Aryll, who has been kidnapped by a giant bird. This event sets you on a grand adventure across the Great Sea, where you will encounter various islands, dungeons, and characters.

Game Controls

Understanding the controls is crucial for a smooth gameplay experience:

- Movement: Use the control stick to move Link.
- Camera: The C-stick allows you to adjust the camera angle.
- Action: The A button is used for interacting with objects and characters.
- Items: The B button is for using your equipped items.
- Map: The Start button opens the menu, where you can access your map and inventory.

Exploring the Great Sea

The Great Sea is vast and filled with islands to explore. Here are some tips to help you navigate:

Charting Your Course

- Wind Waker Ocarina: Use the Wind Waker, a conductor's baton, to control the wind direction. This is essential for sailing efficiently.
- Sea Charts: Acquire sea charts by visiting various islands and talking to characters. They will help you locate treasures and points of interest.
- Sailing Tips: Use your sail to move faster and avoid enemies. You can also use the Swift Sail, which can be obtained later in the game, to sail at a faster speed regardless of wind direction.

Key Islands to Visit

1. Outset Island: The starting point of your adventure, where you can gather resources and meet important characters.
2. Windfall Island: A vibrant island with shops, side quests, and a crucial storyline.
3. Dragon Roost Island: Home to the Rito tribe and the first major dungeon.
4. Forsaken Fortress: The location of your first major challenge and where you will rescue your sister.

Combat Strategies

Combat is a significant aspect of Wind Waker, and mastering it will make your journey easier.

Basic Combat Mechanics

- Swordplay: Use the B button to attack. You can perform different combos by repeatedly pressing the button.
- Lock-On Targeting: Use the L button to lock onto enemies, allowing for more precise attacks and dodges.
- Defensive Moves: Use the shield (R button) to block attacks and perfect parry for a counterattack.

Types of Enemies

1. Moblin: A common enemy that can be defeated through standard attacks.
2. Bokoblin: Smaller and quicker, but easier to dispatch with combos.
3. Darknuts: Heavily armored and require strategic dodging and attacking.

Dungeons and Bosses

Each dungeon in Wind Waker features unique puzzles, enemies, and a boss that tests your skills.

Dragon Roost Cavern

- Puzzles: Use bombs to break down walls and navigate through the cavern.
- Boss: The first major boss is Gohma. To defeat it, look for its weak point in the eye when it is stunned.

Forsaken Fortress

- Stealth Mechanics: Some sections require stealth to avoid the spotlights and enemies.
- Boss: The Dark Commander can be defeated by using your sword and dodging its attacks.

Other Notable Dungeons

- The Tower of the Gods: Features puzzles involving the use of the boomerang and the grapple hook.
- The Wind Temple: Introduces the use of the Master Sword and features challenging enemies.

Collectibles and Upgrades

Throughout your journey, you'll encounter numerous collectibles that enhance your experience.

Heart Pieces

Collecting pieces of heart increases your health. Here's how to find them:

- Explore Islands: Many islands have hidden heart pieces.
- Complete Side Quests: Engaging with NPCs often rewards you with heart pieces.

Treasure Maps and Rupees

- Treasure Charts: Acquire these from various locations and use them to find hidden treasures.
- Rupees: Collect rupees to buy items and upgrades from shops.

Side Quests and Mini-Games

Side quests not only enhance the story but also provide valuable rewards.

Notable Side Quests

1. The Auction House: Participate in this mini-game to win rare items.
2. The Postman: Help him deliver letters to gain rewards.
3. The Cabana Deed: Acquire a personal cabana by completing a series of tasks.

Mini-Games to Try

- Fishman's Mini-Game: Catch fish to fill your sea chart.
- The Swift Sail Challenge: Test your sailing skills for rewards.

Final Thoughts

The Legend of Zelda: Wind Waker offers an enriching adventure filled with exploration, combat, and intricate puzzles. By following this guide, players can enhance their gaming experience, navigate the Great Sea with confidence, and enjoy all that Hyrule has to offer. Whether you're a newcomer or a returning player, the world of Wind Waker awaits your exploration. Happy sailing, and may your journey be filled with excitement and discovery!

Frequently Asked Questions

What are the best strategies for defeating Ganon in The Legend of Zelda: Wind Waker?

To defeat Ganon, focus on dodging his attacks and using the parry mechanic to counter. Use the Master Sword to deal damage when he is vulnerable, and keep your health stocked with potions and fairies.

How can I find all the Triforce pieces in Wind Waker?

To find all the Triforce pieces, you must collect Triforce Charts by completing side quests and exploring. Once you have the charts, use your boat to locate and dig up the pieces in the indicated locations.

What are the best upgrades for the boat in Wind Waker?

The best upgrades for your boat include the Swift Sail, which allows for faster travel, and the various cannons you can use during battles. Prioritize finding the Swift Sail for an overall improved sailing experience.

Where can I find all the Golden Feathers in Wind Waker?

Golden Feathers can be found by defeating certain enemies, such as the Blue Bokoblins, and by checking specific islands. You can also trade with certain NPCs for additional feathers.

How do I solve the Earth and Wind Temple puzzles?

In the Earth Temple, use the Grappling Hook to swing and activate switches, while in the Wind Temple, utilize the Gale Boomerang to manipulate the wind and move platforms. Pay attention to the environment for clues.

What is the significance of the Wind Waker baton?

The Wind Waker baton allows you to conduct the wind, changing its direction to help you sail. It also plays a crucial role in various puzzles and can summon powerful gusts during certain battles.

How can I unlock all the hidden islands in Wind Waker?

To unlock hidden islands, explore the seas and look for clues on your map. Use the Wind Waker to change wind directions and navigate to the islands, and complete any challenges or puzzles to access them.

What are some tips for collecting all the Heart Pieces in Wind Waker?

To collect all Heart Pieces, explore every island thoroughly, complete side quests, and look for hidden areas. Some Heart Pieces require specific items or abilities, so ensure you have the necessary gear when searching.

Find other PDF article:

<https://soc.up.edu.ph/11-plot/Book?ID=fXU58-9876&title=cambridge-english-first-for-schools.pdf>

[Legend Of Zelda Wind Waker Guide](#)

origin.....*legend*.....

May 31, 2019 ·*legend*.....

[Matlab plot](#).....*legend*.....

Mar 4, 2019 ·Matlab.....

origin..... -

2018-07-18

Origin -

Jun 29, 2020 · *Origin* ...

Excel -

Aug 15, 2020 · EXCEL ...

origin *legend* -

May 31, 2019 · *legend* 3 *legend* ...

Matlab plot *legend* -

Mar 4, 2019 · *Matlab* ?

origin -

2018-07-18

Origin -

Jun 29, 2020 · *Origin* ...

Excel -

Aug 15, 2020 · EXCEL Excel

-

Apr 19, 2020 · ...

Excel -

Aug 23, 2017 · Excel 1

origin *legend* -

Apr 30, 2018 · *origin* *legend* dhuhaust 2018-04-30 23641 *origin* ...

ARCGIS -

flowjo -

Dec 8, 2020 · copy flowjo ...

"Master the seas in our comprehensive Legend of Zelda Wind Waker guide! Explore tips

[Back to Home](#)