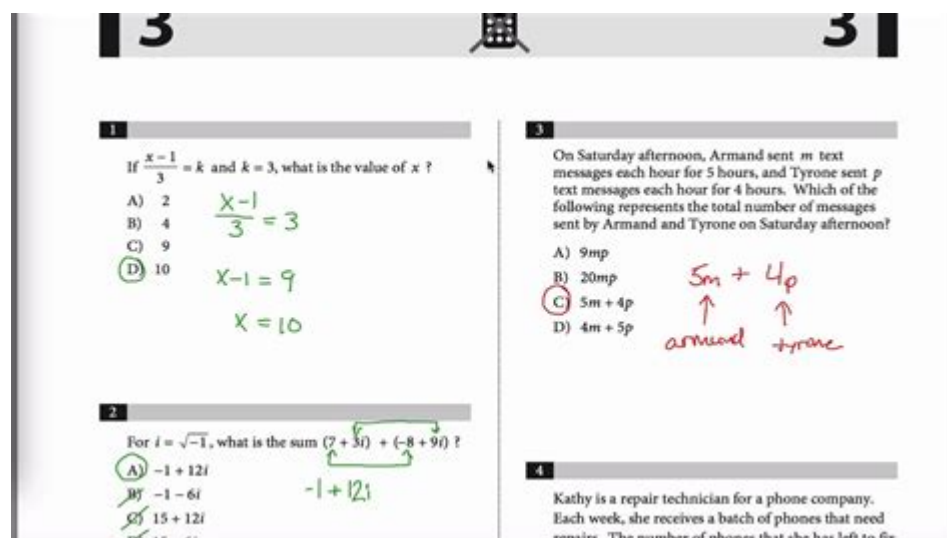


Level 5 Sat Math Questions



Level 5 SAT Math Questions are among the most challenging problems presented in the mathematics section of the SAT. These questions require not only a solid understanding of mathematical concepts but also the ability to apply these concepts in complex scenarios. In this article, we will explore what Level 5 SAT Math questions entail, the types of questions you might encounter, strategies for tackling these problems, and resources for practice.

Understanding Level 5 SAT Math Questions

Level 5 questions are classified as the most difficult on the SAT, often requiring multiple steps to solve. These problems may combine various mathematical topics, including algebra, geometry, data analysis, and advanced problem-solving techniques. Students at this level are expected to demonstrate a high degree of mathematical reasoning and analytical skills.

Characteristics of Level 5 Questions

Level 5 SAT Math questions often exhibit several key characteristics:

1. **Complexity:** These questions often involve multi-step calculations or the integration of multiple concepts.
2. **Abstract Reasoning:** Level 5 questions may ask students to deduce relationships between variables or interpret complex data.
3. **Real-World Applications:** Many of these problems are framed in real-world contexts, requiring students to apply math to practical scenarios.
4. **Graphical Interpretation:** Some questions may involve interpreting graphs or charts, necessitating a strong understanding of visual data representation.

Types of Level 5 SAT Math Questions

Level 5 SAT Math questions can be categorized into various types based on the mathematical concepts they test. Here are some common types:

1. Advanced Algebra

Questions in this category often involve:

- Solving complex equations
- Working with polynomials
- Understanding functions and their transformations
- Analyzing systems of equations

Example Question: If $f(x) = 2x^2 - 3x + 5$, what is the value of $f(2)$?

2. Complex Geometry

These questions may encompass:

- Properties of shapes (triangles, circles, polygons)
- Coordinate geometry
- Trigonometry
- Volume and surface area of 3D shapes

Example Question: What is the area of a triangle with vertices at $(0,0)$, $(4,0)$, and $(2,3)$?

3. Data Analysis and Statistics

Level 5 questions in this area focus on:

- Interpretation of data sets
- Understanding measures of central tendency
- Probability and combinatorics
- Analyzing trends and making predictions

Example Question: If the average score of a class is 80 and the average score of another class is 90, how many more students would need to score 100 in the first class to raise its average to 85?

4. Problem Solving and Real-World Applications

These questions test the ability to apply mathematical reasoning to:

- Financial literacy (interest rates, investments)
- Rates and ratios
- Work and time problems

Example Question: A car travels 60 miles in 1 hour, and then 30 miles in half an hour. What is the average speed of the car for the entire trip?

Strategies for Tackling Level 5 SAT Math Questions

Approaching Level 5 SAT Math questions requires strategic thinking and effective problem-solving skills. Here are several strategies to consider:

1. Understand the Concepts

Before diving into practice problems, ensure that you thoroughly understand the underlying mathematical concepts. Review the following topics:

- Algebraic manipulation
- Geometric properties
- Statistical analysis

2. Read the Questions Carefully

Pay close attention to the wording of each question. Look for key phrases and words that indicate what is being asked. Misinterpreting a question can lead to incorrect answers.

3. Break Down the Problem

For complex problems, break them down into smaller, more manageable parts. This approach allows you to focus on one step at a time, reducing the chance of mistakes.

4. Use Process of Elimination

When faced with multiple-choice questions, use process of elimination to narrow down your options. Discard any clearly incorrect answers first, which can increase your chances of selecting the correct one.

5. Practice with Timed Tests

Familiarize yourself with the timing of the SAT by practicing under timed conditions. This will help you manage your time effectively during the actual exam.

6. Review Mistakes

After practicing, review your incorrect answers to understand where you went wrong. This reflection will help you avoid similar mistakes in the future.

Resources for Practice

To prepare effectively for Level 5 SAT Math questions, consider utilizing the following resources:

1. Official SAT Practice Tests

The College Board offers official SAT practice tests that include a range of questions, including Level 5 problems. These tests provide a great way to familiarize yourself with the exam format and question styles.

2. SAT Prep Books

Many prep books focus specifically on advanced math topics, providing explanations and practice problems for Level 5 questions. Look for books by reputable authors or organizations, such as Princeton Review or Kaplan.

3. Online Resources

Websites like Khan Academy offer free resources, including instructional videos and practice exercises tailored to SAT Math. These platforms often allow you to track your progress and focus on specific areas of improvement.

4. Study Groups or Tutors

Consider joining a study group or hiring a tutor who specializes in SAT preparation. Collaborating with others can provide new insights and strategies for tackling difficult questions.

Conclusion

Level 5 SAT Math questions represent the pinnacle of difficulty in the mathematics section of the SAT. By understanding the types of questions presented, employing effective strategies, and utilizing available resources, students can improve their performance and confidence. Preparing for these challenging questions not only enhances mathematical skills but also promotes critical thinking and problem-solving abilities that are invaluable beyond the SAT. With dedication and practice, achieving success on Level 5 SAT Math questions is within reach.

Frequently Asked Questions

What defines a Level 5 SAT Math question?

Level 5 SAT Math questions are typically the most challenging, requiring advanced problem-solving skills, a deep understanding of mathematical concepts, and the ability to apply them in complex scenarios.

What topics are commonly covered in Level 5 SAT Math questions?

Common topics include advanced algebra, complex functions, geometry, trigonometry, and data analysis, often requiring multi-step reasoning and the integration of different concepts.

How can students prepare for Level 5 SAT Math questions?

Students can prepare by practicing with high-difficulty problem sets, taking practice tests under timed conditions, and reviewing concepts that commonly appear in advanced questions.

Are Level 5 SAT Math questions primarily multiple choice or grid-in?

Level 5 SAT Math questions can be found in both multiple choice and grid-in formats, requiring students to demonstrate their ability to solve complex problems and express their answers accurately.

What strategies can be used to tackle Level 5 SAT Math questions effectively?

Effective strategies include breaking down complex problems into simpler parts, identifying key information, eliminating clearly wrong answer choices, and checking work carefully for errors.

Find other PDF article:

<https://soc.up.edu.ph/66-gist/files?trackid=aSW70-8289&title=what-is-resonant-light-technology.pdf>

Level 5 Sat Math Questions

DX11 feature level 10.0 is required to run_

Nov 21, 2021 · dx11 feature level 10.0 is required
 ...

in / at / on level | WordReference Forums

Feb 13, 2018 · in/on/at level and I learned that "I am on level number " is used in video games. I also found that at seemed to be the most frequently used preposition for 'level.' Could you ...

-

wordWord20161 ...

CEFR level B2

2 5 CEFR level B2 CEFR The Common European Framework of Reference for Languages ...

-

2011 1 ...

level -

Jan 17, 2025 · "Level !" "Level !" ...

Steam -

Steam

level set -

Level Set Method Level set Level set method ...

10RAZ,

Nov 7, 2024 · raz,EPM

Level-2 -

Level-2Level-1Level-1Level-1 ...

DX11 feature level 10.0 is required to run_

Nov 21, 2021 · dx11 feature level 10.0 is required
 ...

in / at / on level | WordReference Forums

Feb 13, 2018 · in/on/at level and I learned that "I am on level number " is used in video games. I also found that at seemed to be the most frequently used preposition for 'level.' Could you ...

-

wordWord20161 ...

CEFR level B2

2 5 CEFR level B2 CEFR The Common European Framework of Reference for Languages ...

-

2011 1 ...

level -

Jan 17, 2025 · "Level !" "Level !" ...

Steam -

Steam

level set -

Level Set Method Level set Level set method ...

10 RAZ, ...

Nov 7, 2024 · raz, E PM

Level-2 -

Level-2 Level-1 Level-1 Level-1 ...

Master your skills with our guide on level 5 SAT math questions! Boost your score and confidence. Discover how to tackle these challenging problems today!

[Back to Home](#)