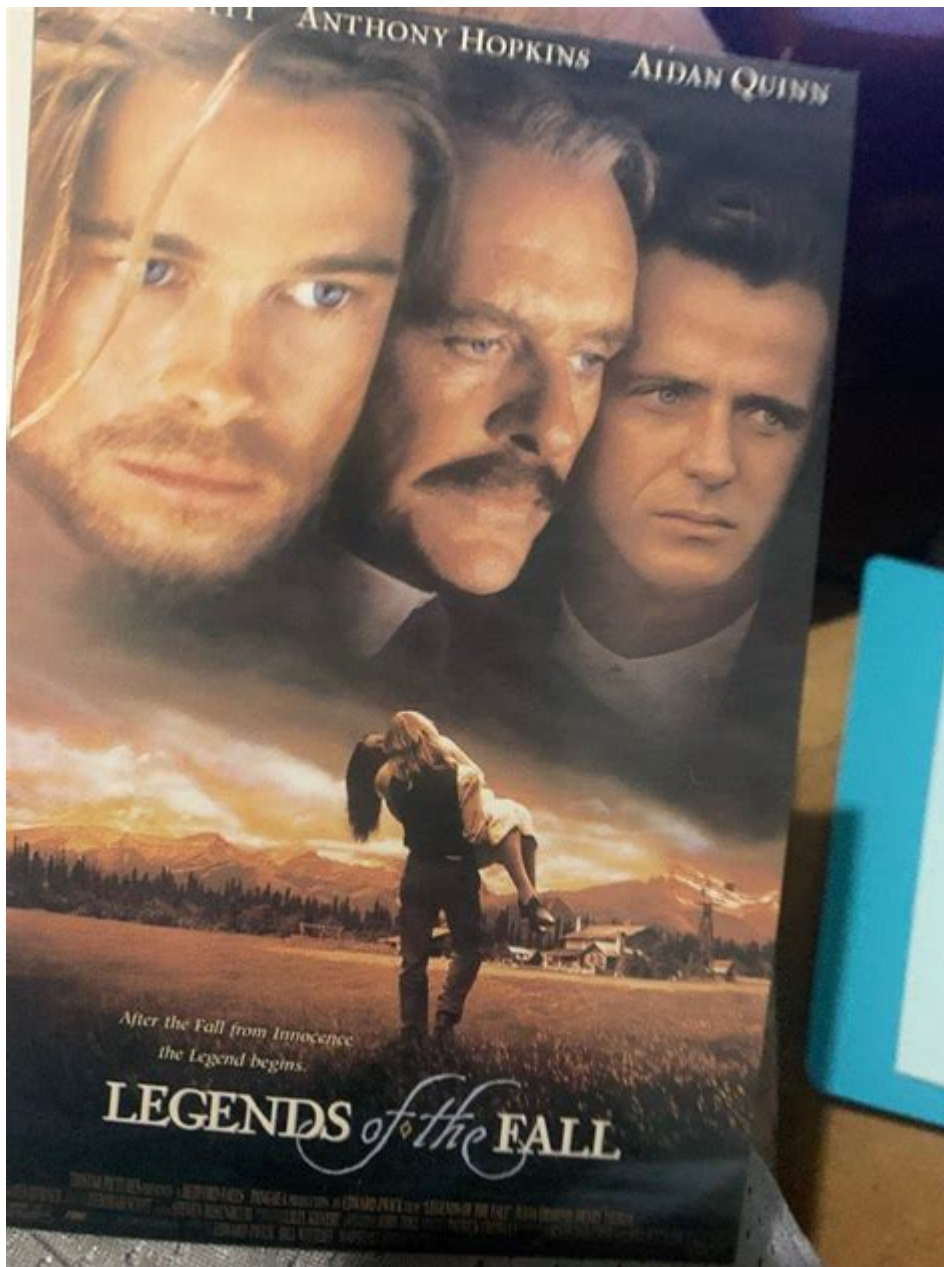


# Legends Of The Fall Parents Guide



## Legends of the Fall Parents Guide

Legends of the Fall is a sweeping epic that intertwines themes of love, loss, and the inexorable passage of time, set against the backdrop of the early 20th century American West. Directed by Edward Zwick and based on a novella by Jim Harrison, the film tells the story of the Ludlow family and their tumultuous relationships, particularly focusing on the bond between three brothers and their father, played by Anthony Hopkins. As parents considering introducing this film to older teenagers or young adults, it is essential to understand its content, themes, and overall suitability for younger audiences. This guide will provide an in-depth look at the film's narrative, explore its themes, and discuss its content to help parents make informed decisions.

# Summary of the Film

Legends of the Fall follows the lives of the Ludlow family, focusing on the brothers Tristan (Brad Pitt), Alfred (Aidan Quinn), and Samuel (Henry Thomas), as well as their father, William (Anthony Hopkins). Set in Montana, the film spans several decades, beginning with the brothers' upbringing and moving through the events of World War I and the subsequent impact on their lives.

The story is narrated by a local woman named Susannah (Julia Ormond), who becomes romantically involved with Tristan and Samuel, leading to a complicated love triangle. Throughout the film, the brothers face personal and external conflicts, including war, betrayal, and the struggle for identity, all set against the backdrop of the changing American landscape.

## Thematic Elements

Legends of the Fall is rich in thematic content that raises several important issues that parents may want to consider when watching the film with their children. Here are some key themes presented in the film:

### 1. Family Dynamics

- Brotherhood and Rivalry: The bond between the brothers is central to the film, showcasing both deep love and intense rivalry. Their relationships evolve as they confront external challenges and personal desires.
- Parental Influence: The figure of William Ludlow is pivotal as he navigates his role as a father, instilling values in his sons while dealing with the consequences of their choices.

### 2. Love and Loss

- Romantic Relationships: The love triangle between Susannah and the brothers illustrates the complexities of romantic relationships, including passion, betrayal, and heartbreak.
- Grief and Mourning: The film explores how family members cope with loss, highlighting the emotional toll of war and personal tragedy.

### 3. The Impact of War

- Consequences of Conflict: The film addresses the brutal realities of World War I and its lasting effects on those who served, particularly Tristan and Samuel, and how it alters their lives and relationships.
- Courage and Sacrifice: Themes of bravery and sacrifice are prevalent, showcasing the characters' struggles with their identities as soldiers and as men.

# Content Considerations

When considering *Legends of the Fall* for family viewing, parents should be aware of various content elements that may be concerning. The film is rated R for its mature themes and content, which include:

## 1. Violence

- War Scenes: The film features graphic depictions of violence, particularly in the context of battle. Parents should be prepared for intense war scenes that may be distressing for younger viewers.
- Personal Conflicts: There are moments of physical conflict among characters that may involve bloodshed and emotional pain.

## 2. Sexual Content

- Nudity and Sexual Situations: The film contains scenes of nudity and sexual intimacy, which may not be suitable for younger audiences. These scenes are integral to the narrative but are depicted in a manner that is explicit.
- Romantic Relationships: The film explores themes of love and desire, showing the complexities and consequences of romantic entanglements.

## 3. Profanity

- Language: The film includes strong language and profanity, which may not be appropriate for younger viewers. Parents should be aware of the frequency and context of such language.

## 4. Substance Use

- Alcohol Consumption: Characters are depicted consuming alcohol, particularly in social settings and during moments of celebration or mourning. The portrayal of drinking is realistic and may prompt discussions about substance use.

## Age Appropriateness

Given the film's R rating, *Legends of the Fall* is generally considered appropriate for mature teenagers aged 17 and older. However, parents should use their discretion based on their child's maturity level and sensitivity to the themes presented. Here are a few considerations for age appropriateness:

- **Mature Themes:** The film addresses complex issues such as war, love, and loss, which may resonate differently with younger viewers. Parents might want to discuss these themes before or after viewing.
- **Viewer Sensitivity:** Consider the individual sensitivities of your child; some may find the violence or emotional content distressing, while others may appreciate the depth of the narrative.
- **Contextual Discussions:** Encourage open discussions about the film's themes and content. This can help young viewers process the material and develop critical thinking skills.

## **Discussion Points for Parents**

After watching *Legends of the Fall*, parents may want to engage their children in discussions to further explore the film's themes and characters. Here are some potential discussion points:

### **1. Character Analysis:**

- What motivates each of the Ludlow brothers? How do their individual choices impact the family dynamic?
- How does William Ludlow's parenting style affect his sons? What lessons do they learn from him?

### **2. Themes of Love:**

- How does the film portray love and relationships? What challenges do the characters face in their romantic pursuits?
- How do loss and grief shape the characters' understanding of love?

### **3. War and Its Consequences:**

- What are the film's messages about war? How does it affect the characters' lives both physically and emotionally?
- How do the characters cope with the trauma of war? What insights does the film provide about the psychological effects of combat?

### **4. Cultural Context:**

- How does the film reflect the historical context of the early 20th century? What social or cultural issues are highlighted?
- In what ways does the film portray the American landscape and its significance to the characters?

## **Conclusion**

*Legends of the Fall* is a beautifully crafted film that offers a poignant exploration of family, love, and the human experience. However, its mature themes and content necessitate careful consideration for parents contemplating viewing it with their children. With its complex characters and rich narrative, the film provides ample opportunity for discussion and reflection. By engaging with the film thoughtfully, parents can help their children

navigate its challenging themes and appreciate the intricate tapestry of human relationships depicted on screen.

## **Frequently Asked Questions**

### **What is 'Legends of the Fall' about?**

It is a film that tells the story of the Ludlow brothers and their complex relationship with their father and a woman named Susannah, set against the backdrop of early 20th-century America.

### **Is 'Legends of the Fall' suitable for children?**

The film contains mature themes, violence, and some nudity, making it more suitable for older teens and adults.

### **What age rating does 'Legends of the Fall' have?**

The film is rated R for violence, sexual content, and language.

### **What are the main themes in 'Legends of the Fall'?**

Key themes include love, loss, the effects of war, and the complexities of family relationships.

### **Are there any graphic scenes in 'Legends of the Fall'?**

Yes, there are several intense and graphic scenes, particularly related to war and violence.

### **How does 'Legends of the Fall' portray relationships?**

The film explores complex romantic and familial relationships, highlighting love, jealousy, and the struggle for power.

### **Is there any strong language in 'Legends of the Fall'?**

Yes, the film includes instances of strong language throughout its runtime.

### **What should parents consider before letting their children watch 'Legends of the Fall'?**

Parents should consider the film's mature themes, graphic content, and emotional intensity before allowing younger viewers.

### **Who are the main actors in 'Legends of the Fall'?**

The film stars Brad Pitt, Anthony Hopkins, Aidan Quinn, and Julia Ormond.

# Is 'Legends of the Fall' based on a book?

Yes, it is based on a novella written by Jim Harrison.

Find other PDF article:

<https://soc.up.edu.ph/68-fact/files?docid=kTK92-0070&title=yamaha-golf-cart-manual.pdf>

## Legends Of The Fall Parents Guide

Figure Legends -

Figure Legends  
Legends SCIE ...

figure key, legend, caption ...

figure captions, labels legends The Results section of a manuscript includes tables, figures, and other non-textual elements ...

LPL CN LOL -

LCS League of Legends Championship Series ...

lol rofl? -

2020 ...

-

Mar 17, 2022 · 2 4399

-

Jul 1, 2019 · 2 1 WeGame \Game League of Legends.exe 2 ...

LOL -

Oct 9, 2020 · ...

Riot Client -

“regedit” “” ...

? -

Jun 30, 2023 · minecraft.net Bing Windows Microsoft ...

3 DLC Legends of Dead? -

Mar 7, 2024 · 3 DLC Legends of Dead? 3 90%

## Figure Legends -

Figure Legends  
LegendsSCIE ...

figure key ,legend, caption

figure captions labels legends Figure captions, lables legends The Results section of a manuscript includes tables, figures, and other non-textual elements that ...

LPLCN LOL -

LCSLeague of Legends Championship Series ...

## lolrofl? -

2020 ...

-

Mar 17, 2022 · 2 4399

-

Jul 1, 2019 · 2 1WeGameGameLeague of Legends.exe 2 ...

LOL -

Oct 9, 2020 ·

Riot Client -

“regedit” “” ...

? -

Jun 30, 2023 · minecraft.net Bing Windows - Microsoft outlook ...

3DLCLegends of Dead? -

Mar 7, 2024 · 3DLCLegends of Dead? 3 90%

Explore our comprehensive 'Legends of the Fall' parents guide

[Back to Home](#)