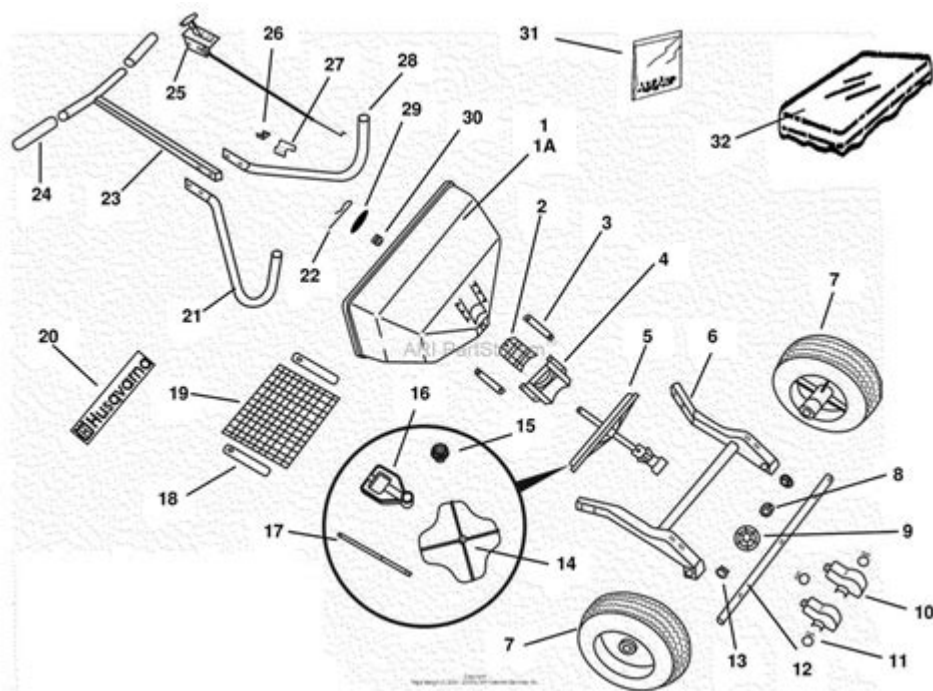


Lesco Hps Chariot Parts Diagram



lesco hps chariot parts diagram is an essential resource for anyone who owns or maintains a LESCO HPS Chariot. Understanding the various components of this equipment can enhance its functionality, improve maintenance practices, and extend its lifespan. In this article, we will delve into the details of the LESCO HPS Chariot, breaking down its parts, their functions, and how to effectively use the parts diagram for troubleshooting and repairs.

Understanding the LESCO HPS Chariot

The LESCO HPS Chariot is a versatile piece of equipment commonly used in landscaping, lawn care, and agricultural applications. Its robust design allows for efficient operation while ensuring comfort and ease of use for the operator. The chariot is particularly known for its ability to carry various attachments and tools, making it a valuable asset in any outdoor work environment.

Importance of the Parts Diagram

A **lesco hps chariot parts diagram** serves multiple purposes:

- **Identification:** It helps users identify each part of the chariot, which is crucial for effective maintenance.

- **Repair Guidance:** In case of malfunction, the diagram can guide users in locating the faulty component for replacement.
- **Assembly and Disassembly:** For those who need to assemble or disassemble the chariot, having a clear diagram is invaluable.
- **Parts Ordering:** Knowing the specific part numbers or names helps in ordering the correct replacements.

Main Components of the LESCO HPS Chariot

The LESCO HPS Chariot is made up of various critical components. Understanding these parts is essential for proper maintenance and operation. Below is a detailed look at the main components:

1. Frame

The frame is the backbone of the chariot, providing stability and support. It is designed to withstand heavy loads and rough terrain.

2. Wheels and Tires

The chariot typically features durable wheels and tires that facilitate movement across different surfaces. The size and tread pattern can significantly affect performance.

3. Engine

The engine powers the chariot. Regular maintenance is important to keep it running smoothly. Users should refer to the parts diagram to locate components such as the spark plug, air filter, and fuel lines.

4. Steering Mechanism

A reliable steering mechanism is crucial for maneuverability. Users should understand how to adjust and maintain this part to ensure optimal performance.

5. Hitch

The hitch allows for the attachment of various implements or trailers. Proper adjustment and maintenance of the hitch are vital for safe operation.

6. Fuel System

The fuel system includes the fuel tank, lines, and pump. Regular checks for leaks or blockages can prevent operational issues.

7. Electrical System

The electrical system powers lights, starting mechanisms, and other electronic components. Understanding the wiring and fuses is essential for troubleshooting electrical issues.

8. Controls

The control panel includes various switches and levers that operate the chariot. Familiarity with these controls can enhance operational efficiency.

How to Read the LESCO HPS Chariot Parts Diagram

Reading a parts diagram can initially seem daunting, but it becomes easier with practice. Here are some steps to effectively use the **lesco hps chariot parts diagram**:

1. **Familiarize Yourself with the Diagram:** Before diving into repairs, spend some time understanding the layout of the diagram.
2. **Identify Key Components:** Locate the main parts listed in the previous section and see how they are connected.
3. **Look for Labels:** Most diagrams have labels or part numbers that correspond to a parts list.
4. **Cross-Reference with the Manual:** Use the owner's manual to understand the functions of each part and any specific maintenance requirements.

Common Issues and Troubleshooting

The LESCO HPS Chariot, like any machinery, can encounter issues over time. Here are some common problems and how the parts diagram can assist in troubleshooting:

1. Engine Won't Start

- Check the fuel system for blockages.
- Inspect the battery and electrical connections.
- Use the parts diagram to locate and examine the starter motor and ignition components.

2. Steering Difficulties

- Inspect the steering linkage for wear or damage.
- Ensure that the wheels are properly aligned.
- Refer to the diagram to locate all steering-related components.

3. Uneven Tire Wear

- Check for proper tire inflation and alignment.
- Inspect the wheel bearings and suspension components.
- The parts diagram can help identify specific parts that may need adjustment or replacement.

4. Hydraulic Issues (if applicable)

- Inspect hydraulic lines for leaks.
- Check the hydraulic fluid levels and filter.
- Use the diagram to locate the hydraulic pump and components for further inspection.

Maintenance Tips for the LESCO HPS Chariot

Regular maintenance is key to maximizing the lifespan and performance of the LESCO HPS Chariot. Here are some tips:

- **Regular Inspections:** Routinely check all major components for wear and tear.
- **Keep It Clean:** Clean the machine after each use to prevent dirt and debris build-up.
- **Lubrication:** Ensure that all moving parts are properly lubricated according to the manufacturer's instructions.
- **Follow the Schedule:** Adhere to the maintenance schedule outlined in the owner's manual.
- **Consult the Parts Diagram:** Use the diagram when performing maintenance to ensure all parts are properly serviced.

Conclusion

The **lesco hps chariot parts diagram** is an invaluable tool for anyone who owns or operates this equipment. By understanding the individual parts and how they work together, users can enhance their maintenance practices, troubleshoot issues effectively, and ensure their chariot remains in optimal working condition. Regular maintenance and familiarity with the parts diagram will lead to better performance and longevity of the LESCO HPS Chariot, making it a worthwhile investment for any landscaping or agricultural project.

Frequently Asked Questions

What is the purpose of the LESCO HPS chariot parts diagram?

The LESCO HPS chariot parts diagram provides a detailed visual representation of the various components of the chariot, aiding in maintenance, repair, and understanding of its assembly.

Where can I find the LESCO HPS chariot parts diagram?

The LESCO HPS chariot parts diagram can typically be found in the user manual, on the manufacturer's website, or through authorized dealers and service centers.

How can I use the LESCO HPS chariot parts diagram for repairs?

You can use the LESCO HPS chariot parts diagram to identify specific parts that need replacement, understand their location, and follow the assembly instructions for proper installation.

Are there any common issues with LESCO HPS chariot parts that the diagram can help diagnose?

Yes, the diagram can help diagnose common issues such as worn-out wheels, faulty brakes, or misaligned components by visually guiding you to the relevant parts.

Can I download the LESCO HPS chariot parts diagram online?

Yes, many resources online offer downloadable PDFs of the LESCO HPS chariot parts diagram, often available on the official LESCO website or through equipment repair forums.

Is the LESCO HPS chariot parts diagram the same for all

models?

No, the LESCO HPS chariot parts diagram may vary between different models, so it's important to ensure you have the correct diagram that corresponds to your specific model.

Find other PDF article:

<https://soc.up.edu.ph/39-point/files?dataid=Txi03-0108&title=master-class-art-history.pdf>

Lesco Hps Chariot Parts Diagram

SQL - Using placeholders to retrieve rows that are LIKE the ...

Mar 4, 2019 · Only when the query inputted placeholders are LIKE either column, the restaurant will return as result. I have attempted to create this query using this, but the syntax must be ...

How to keep previous data when refetching multiple times using ...

Aug 4, 2023 · How to keep previous data when refetching multiple times using React Query? Asked 1 year, 11 months ago Modified 1 year, 1 month ago Viewed 15k times

How can I create a blank/hardcoded column in a sql query?

May 28, 2017 · I want have a query with a column that is a hardcoded value not from a table, can this be done? I need it basically as a placeholder that I am going to come back to later and fill ...

How can I get placeholder attribute value using jquery?

Dec 7, 2011 · I am trying to get the placeholder attribute value and do a fadeIn with the label which has the placeholder value as a for value, but it's not working. HTML: <html> ...

mysql - Python MySQLdb placeholders syntax - Stack Overflow

Mar 27, 2010 · Thanks for contributing an answer to Stack Overflow! Please be sure to answer the question. Provide details and share your research! But avoid ... Asking for help, ...

Python Flask MySQL, problem with UPDATE query - Stack Overflow

May 5, 2021 · For every placeholder -- %s -- in your query, you need to supply a variable in the tuple that is the 2nd argument to .execute(). You have the variables you need, you're just not ...

SQLite3 querying a database with '?' placeholders [duplicate]

Mar 8, 2017 · I have a table named shoes with names and prices. This code works and queries two rows: c.execute("SELECT * FROM shoes WHERE name LIKE '%nike tiempo%' AND ...

how to use placeholders in mysql queries from php

May 26, 2014 · I have tried to use the % many times in different ways, but i have no more ideas of how to use it, just to make it work. If any one could tell me what is wrong i would appreciate that.

SQL placeholder in WHERE IN issue, inserted strings fail

Jul 6, 2010 · To generate a query, I need to pass an array of tags (essentially primary keys), but these have to be inserted as strings. As this will be a modular query and used for multiple ...

Sep 10, 2017 · Well, since you have only an API and don't have control over it in order to change it to use sockets, the only way you have is to poll. As per your polling is concerned, you're ...

[Back to Home](#)