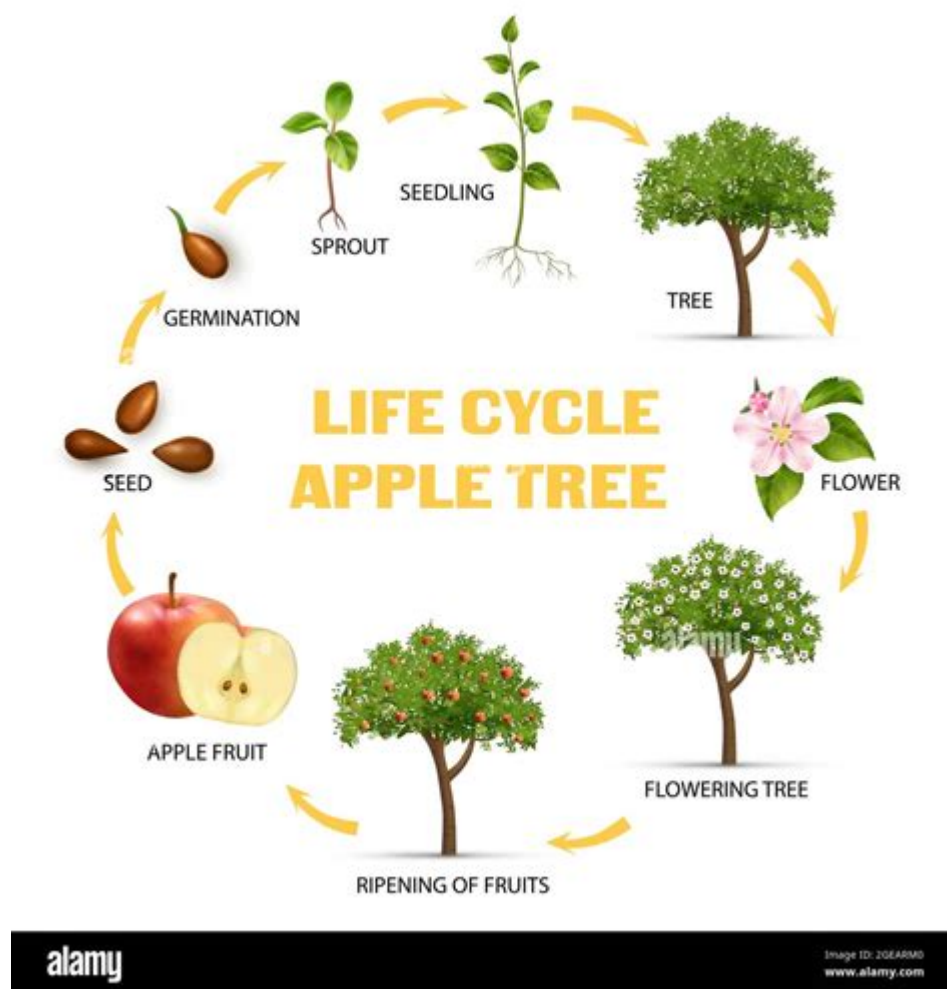


# Life Cycle Of An Apple Tree



Life cycle of an apple tree is a fascinating journey that showcases the miraculous process of growth and reproduction in nature. From a tiny seed to a mature tree bursting with succulent fruits, the life cycle of an apple tree encompasses several stages, each critical to the tree's development and productivity. Understanding this life cycle not only enriches our knowledge of botany but also enhances our appreciation for the apples we enjoy every day. In this article, we will explore the various stages of an apple tree's life cycle, including germination, growth, flowering, fruiting, and dormancy.

## 1. Seed Stage

**The life cycle of an apple tree starts with a seed. Seeds are formed from the fertilized ovules of the apple**

**flower and contain all the genetic information necessary for the development of a new tree.**

## **1.1 Seed Structure**

**An apple seed has several important components:**

- Seed coat: This protects the seed from physical damage and desiccation.**
- Embryo: The young plant that will develop into a new tree.**
- Endosperm: A nutrient-rich tissue that provides food for the embryo during germination.**

## **1.2 Seed Dormancy**

**After the seeds are formed, they often enter a dormant state. This dormancy helps protect the seeds from unfavorable growing conditions. Seeds may remain viable for several months or even years, depending on environmental factors.**

## **2. Germination**

**Germination is the process by which a seed develops into a new plant. For apple seeds, this process requires specific conditions, including moisture, warmth, and**

**sometimes a period of cold stratification.**

## **2.1 Conditions for Germination**

**To successfully germinate, apple seeds need:**

- Moisture: Water activates enzymes that start the growth process.**
- Temperature: Optimal temperatures range from 60 to 70 degrees Fahrenheit (15 to 21 degrees Celsius).**
- Oxygen: Seeds require oxygen for cellular respiration.**

## **2.2 Germination Process**

**The germination process consists of several stages:**

- 1. Imbibition: The seed absorbs water and swells.**
- 2. Activation: Enzymes are activated, and metabolism begins.**
- 3. Radicle Emergence: The first root, or radicle, emerges from the seed, anchoring it into the soil.**
- 4. Shoot Emergence: The shoot begins to grow upward, eventually developing leaves.**

## **3. Seedling Stage**

**Once the seed has germinated, it enters the seedling stage. This is a critical period for establishing a strong**

**foundation for future growth.**

### **3.1 Growth Requirements**

**During the seedling stage, apple trees need:**

- Sunlight:** Adequate light for photosynthesis.
- Nutrients:** Essential minerals and elements from the soil, such as nitrogen, phosphorus, and potassium.
- Water:** Regular watering to keep the soil moist.

### **3.2 Characteristics of Seedlings**

**Seedlings are generally characterized by:**

- Small Size:** They are typically a few inches tall.
- Limited Root System:** The roots are still developing and may be shallow.
- Initial Leaves:** The first leaves, known as cotyledons, may appear before true leaves develop.

## **4. Vegetative Growth**

**As the seedling matures, it enters the vegetative growth stage, where it develops into a small tree.**

### **4.1 Growth Factors**

**For optimal vegetative growth, apple trees require:**

- Favorable Weather:** A mix of warm days and cool nights enhances growth.
- Pruning:** Regular pruning encourages healthy structure and growth patterns.
- Fertilization:** Applying balanced fertilizers supports nutrient uptake.

## **4.2 Characteristics of Vegetative Growth**

**During this stage, apple trees exhibit:**

- Increased Height:** Rapid growth occurs, often reaching several feet within a few years.
- Branch Development:** Lateral branches begin to form, contributing to the tree's canopy.
- Root Expansion:** The root system expands to anchor the tree and absorb nutrients.

## **5. Flowering Stage**

**The flowering stage is a crucial part of the life cycle of an apple tree, as it leads to fruit production. Typically, apple trees begin to flower in their third to fifth year, depending on the variety and growing conditions.**

### **5.1 Pollination Process**

**Apple trees are usually not self-pollinating, which means they require pollen from another apple tree to fertilize their flowers. This process involves:**

- Insect Pollinators: Bees and other insects play a vital role in transferring pollen.**
- Wind: Wind can also assist in moving pollen between flowers.**

## **5.2 Flower Anatomy**

**Apple blossoms consist of several parts:**

- Petals: Colorful and fragrant, attracting pollinators.**
- Stamens: Male reproductive organs that produce pollen.**
- Pistil: The female reproductive part that receives pollen and develops into fruit.**

## **6. Fruiting Stage**

**Once pollination occurs, the apple tree can produce fruit. The fruiting stage is marked by the development of the apple from a fertilized ovule.**

### **6.1 Fruit Development Process**

**The process of fruit development involves:**

- 1. Fertilization:** The pollen travels to the ovule, leading to fertilization.
- 2. Fruit Growth:** The ovary begins to swell and develop into the fruit.
- 3. Maturation:** The fruit matures over several months, during which it develops its characteristic color, flavor, and texture.

## **6.2 Factors Influencing Fruit Quality**

**Several factors can influence the quality of the fruit, including:**

- Genetics:** Different apple varieties produce fruits with varying characteristics.
- Environmental Conditions:** Weather, soil quality, and water availability all contribute to fruit development.
- Pest and Disease Management:** Effective management practices can prevent damage to the fruit.

## **7. Dormancy**

**After the fruiting stage, apple trees enter a dormant period, which is crucial for their health and future growth.**

### **7.1 Importance of Dormancy**

**Dormancy allows apple trees to:**

- Conserve Energy:** During this period, trees use less energy as metabolic processes slow down.
- Prepare for Winter:** Trees undergo physiological changes to survive cold temperatures.
- Rejuvenate:** Dormancy helps trees recover and prepare for the next growing season.

## **7.2 Signs of Dormancy**

**Signs that an apple tree is entering dormancy include:**

- Leaf Drop:** Trees shed their leaves as temperatures drop.
- Reduced Growth:** Growth slows significantly, and new shoots cease to develop.
- Bark Changes:** The bark may become thicker as a protective measure against frost.

## **8. Conclusion**

**The life cycle of an apple tree is a remarkable journey that encapsulates growth, reproduction, and survival. From the tiny seed to the majestic tree laden with fruit, each stage plays a vital role in the overall development of the apple tree. By understanding this cycle, we can better appreciate the complexities of nature and the importance of caring for our environment. Whether you**



**are a gardener, a farmer, or simply an apple enthusiast, recognizing the life cycle of an apple tree can deepen your connection to this beloved fruit.**

## **Frequently Asked Questions**

**What are the stages in the life cycle of an apple tree?**

**The life cycle of an apple tree includes seed germination, seedling growth, maturity, flowering, fruit development, and finally, seed dispersal.**

**How does an apple tree reproduce?**

**Apple trees reproduce sexually through pollination, where pollen from the male part of a flower fertilizes the ovule in the female part, leading to fruit and seeds.**

**What conditions are necessary for an apple seed to germinate?**

**Apple seeds require proper moisture, temperature (usually between 60-70°F), and sometimes a period of cold stratification to break dormancy before germination.**

**How long does it take for an apple tree to bear fruit?**

**Apple trees typically begin to bear fruit 3 to 5 years after planting, depending on the variety and growing conditions.**

**What role do pollinators play in the life cycle of an apple tree?**

**Pollinators, such as bees, play a crucial role in the life cycle of an apple tree by transferring pollen between**

**flowers, which is necessary for fertilization and fruit set.**

**What happens during the flowering stage of an apple tree?**

**During the flowering stage, apple trees produce blossoms that attract pollinators, and once pollinated, these flowers develop into apples.**

**How do apple trees adapt to their environment throughout their life cycle?**

**Apple trees adapt by adjusting their growth rates, leaf production, and flowering times based on environmental factors like temperature, soil health, and water availability.**

**What is the significance of seed dispersal in the life cycle of an apple tree?**

**Seed dispersal is significant as it allows apple trees to spread their genetic material over a wider area, facilitating colonization of new habitats and ensuring the continuation of the species.**

**Find other PDF article:**

**<https://soc.up.edu.ph/49-flash/files?ID=bcq70-7298&title=psalm-91-bible-study.pdf>**

**[Life Cycle Of An Apple Tree](#)**

**Our Christian Life and Ministry —Meeting Workbook**  
**Life and Ministry weekly meeting schedule. Study material for Treasures From God's Word, Apply Yourself to the Field Ministry, Living as Christians.**

**The Road to Life - JW.ORG**

**Jul 21, 2025 · Seeking great things for Jehovah from our youth on helps us stay on the road to life.**

***The Life of Jesus—From His Birth to His Death | Bible Stories***

**Jesus' birth, events in his childhood and youth. Jesus' baptism, the years of preaching, teaching, and miracles. The death of Jesus Christ.**

**Guided Bible Study Course - JW.ORG**

**A free Bible course with a personal instructor but without commitment. You'll get a Bible if you need one along with the interactive Bible study guide "Enjoy Life Forever!"**

***JW Life and Ministry Meeting Schedule April 21-27, 2025***

**The blessings that Jehovah showers on his servants during these difficult last days help us to cope and even enrich our life. (Ps 4:3; Pr 10:22) Read the following scriptures.**

**Appreciate the Gift of Life - JW.ORG**

**Life can be full of wonderful experiences. Even when we face problems, we can usually enjoy some aspects of life. How can we show that we appreciate the gift of life? And what is the ...**

## **Our Purpose in Life - JW.ORG**

**Our Purpose in Life At the outset, a brief description of Jehovah's Witnesses and our purpose in life will be helpful. We are an international body of Christians who can be found in more than ...**

## ***Enjoy Life Forever!—Introductory Bible Lessons - JW.ORG***

**Enjoy Life Forever!—Introductory Bible Lessons This brochure can serve as an introduction to your personal Bible study as part of our free Bible study program.**

## **JW Life and Ministry Meeting Schedule July 28-August 3, 2025**

**A disease outbreak, a natural disaster, civil unrest, war, or persecution can strike suddenly. When adversities occur, the affected Christians pull together to help and encourage one another. ...**

## **Section 2 - JW.ORG**

**Library Books & Brochures Enjoy Life Forever!—An Interactive Bible Course READ IN**

**Our Christian Life and Ministry —Meeting Workbook**

**Life and Ministry weekly meeting schedule. Study material for Treasures From God's Word, Apply Yourself to the Field Ministry, Living as Christians.**

***The Road to Life - JW.ORG***

**Jul 21, 2025 · Seeking great things for Jehovah from our youth on helps us stay on the road to life.**

**The Life of Jesus—From His Birth to His Death | Bible Stories**

**Jesus' birth, events in his childhood and youth. Jesus' baptism, the years of preaching, teaching, and miracles. The death of Jesus Christ.**

***Guided Bible Study Course - JW.ORG***

**A free Bible course with a personal instructor but without commitment. You'll get a Bible if you need one along with the interactive Bible study guide "Enjoy Life Forever!"**

***JW Life and Ministry Meeting Schedule April 21-27, 2025***

**The blessings that Jehovah showers on his servants during these difficult last days help us to cope and even enrich our life. (Ps 4:3; Pr 10:22) Read the following scriptures.**

**Appreciate the Gift of Life - JW.ORG**

**Life can be full of wonderful experiences. Even when we**

**face problems, we can usually enjoy some aspects of life. How can we show that we appreciate the gift of life? And what is the most ...**

### ***Our Purpose in Life - JW.ORG***

**Our Purpose in Life At the outset, a brief description of Jehovah's Witnesses and our purpose in life will be helpful. We are an international body of Christians who can be found in more than 200 ...**

### **Enjoy Life Forever!—Introductory Bible Lessons - JW.ORG**

**Enjoy Life Forever!—Introductory Bible Lessons This brochure can serve as an introduction to your personal Bible study as part of our free Bible study program.**

### ***JW Life and Ministry Meeting Schedule July 28-August 3, 2025***

**A disease outbreak, a natural disaster, civil unrest, war, or persecution can strike suddenly. When adversities occur, the affected Christians pull together to help and encourage one another. ...**

### **Section 2 - JW.ORG**

**Library Books & Brochures Enjoy Life Forever!—An Interactive Bible Course READ IN**

**Explore the fascinating life cycle of an apple tree**

**[Back to Home](#)**