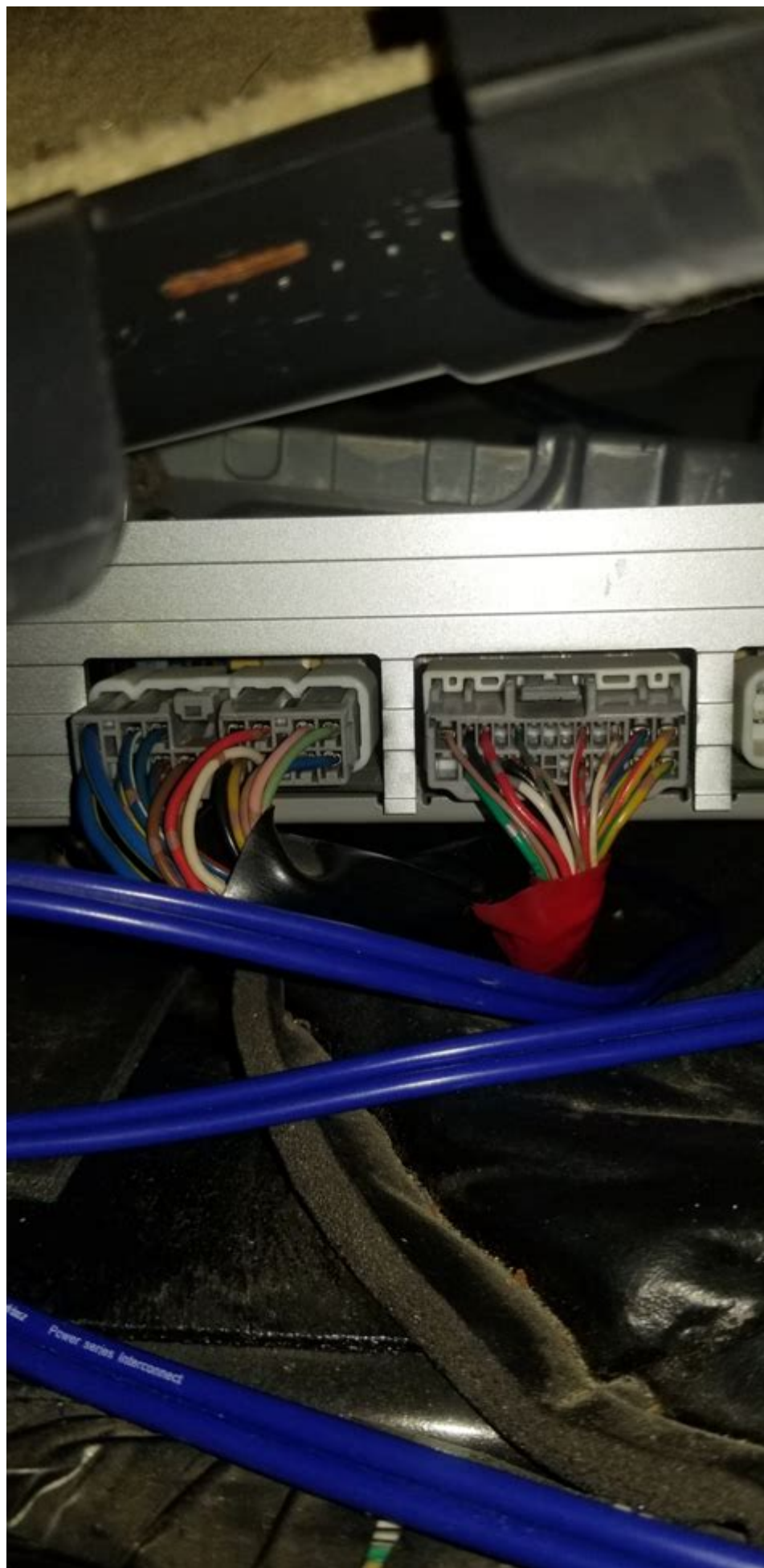


# **Lexus Mark Levinson Wiring Diagram**



**Lexus Mark Levinson Wiring Diagram** is a vital aspect of understanding the sophisticated audio system found in many Lexus vehicles. Mark Levinson, a brand known for its high-fidelity sound systems, provides premium audio experiences through innovative technology and precise engineering. The wiring diagram serves as a roadmap for technicians and enthusiasts alike, allowing them to troubleshoot, repair, or upgrade the audio system effectively. In this article, we will delve into the intricacies of the Lexus Mark Levinson wiring diagram, covering its components, significance, and practical applications.

## Understanding the Mark Levinson Audio System

The Mark Levinson audio systems in Lexus vehicles are designed to deliver exceptional sound quality, providing an immersive listening experience. Here's what sets them apart:

1. **High-Quality Components:** The systems use high-grade speakers, amplifiers, and digital signal processors (DSP) to produce clear and powerful sound.
2. **Custom-Tuning:** Each system is custom-tuned to fit the unique acoustics of the vehicle, ensuring optimal performance.
3. **Advanced Technology:** Integration of technologies such as Dolby Digital and satellite radio enhances the overall listening experience.

## Key Features of Mark Levinson Systems

- **Multi-Channel Amplification:** Provides clear sound across all frequencies.
- **Surround Sound Processing:** Creates a three-dimensional audio environment.
- **Adaptive Audio Technology:** Adjusts sound settings based on vehicle speed and road noise.

## Importance of Wiring Diagrams

Wiring diagrams are essential for several reasons, especially in high-end audio systems like those from Mark Levinson:

- **Troubleshooting:** Simplifies the process of identifying and fixing electrical issues.
- **Installation:** Aids in proper installation of components, ensuring optimal performance.
- **Upgrades and Modifications:** Facilitates the addition of aftermarket components or enhancements.

## Components of the Lexus Mark Levinson Wiring Diagram

A typical wiring diagram for a Lexus Mark Levinson audio system includes several key components:

1. **Amplifier:** Central to the sound system, responsible for powering the speakers.
2. **Speakers:** Various types, including woofers, mid-range, and tweeters.

3. Head Unit: The main control unit that manages audio sources and settings.
4. Wiring Harness: Connects all components and ensures proper signal transmission.
5. Power Supply: Provides the necessary power for the system to function.
6. Ground Connections: Essential for reducing noise and ensuring system stability.

## Common Wiring Schematics

While the specific wiring diagrams can vary by model year and vehicle type, they generally follow similar patterns. Below are common layouts you may encounter:

### Amplifier Wiring

- Power Wire: Connects the amplifier to the vehicle's battery.
- Ground Wire: Connects to a solid chassis ground.
- Speaker Wires: Connects to individual speakers.
- Input Wires: Connects to the head unit for audio signal input.

### Speaker Wiring

- Positive and Negative Leads: Ensure proper polarity for speaker connections.
- Crossovers: Used in systems with multiple speaker types to direct frequencies to the appropriate speakers.

## How to Read a Wiring Diagram

Understanding how to read a wiring diagram is crucial for effective troubleshooting and installation. Here are some key elements to look for:

1. Symbols: Each component (like speakers and amplifiers) has a specific symbol.
2. Lines: Solid lines typically represent wires, while dashed lines may indicate connections that are not direct.
3. Color Coding: Wires are often color-coded to indicate their function (e.g., red for power, black for ground).
4. Labels: Components and wires are labeled for easy identification.

## Step-by-Step Guide to Reading Wiring Diagrams

1. Identify Components: Familiarize yourself with the symbols used in the diagram.
2. Trace Connections: Follow the lines to see how components are interconnected.
3. Refer to Color Codes: Use the color coding to understand the function of each wire.

4. Check for Grounding: Ensure that all components are properly grounded to avoid noise issues.

## **Practical Applications of Wiring Diagrams**

Wiring diagrams are not just for professionals; they can also be useful for car enthusiasts looking to enhance their audio systems. Here are a few practical applications:

### **Upgrading Speakers**

- Choosing Compatible Speakers: Use the wiring diagram to ensure that new speakers will work with the existing system.
- Wiring Connections: Follow the diagram to make appropriate connections.

### **Installing Aftermarket Amplifiers**

- Identify Power Requirements: Determine the required power supply and grounding needs.
- Connect Inputs and Outputs: Use the wiring diagram to correctly route audio signals.

### **Troubleshooting Issues**

- Identifying Faulty Components: Use the wiring diagram to isolate and identify components that may be malfunctioning.
- Testing Connections: Check continuity of wires as indicated in the diagram.

## **Resources for Obtaining Wiring Diagrams**

Finding the right wiring diagram can be challenging, but several resources can assist:

1. Service Manuals: Official Lexus service manuals often include detailed wiring diagrams.
2. Online Forums: Automotive forums and communities may have shared diagrams and troubleshooting tips.
3. Repair Websites: Websites like Alldata or Mitchell1 provide access to comprehensive vehicle repair information, including wiring diagrams.
4. Manufacturer Websites: Lexus may provide downloadable resources for specific models.

## **Conclusion**

In summary, the Lexus Mark Levinson wiring diagram is an essential tool for anyone looking to understand, troubleshoot, or enhance the audio system in

their Lexus vehicle. By familiarizing oneself with the components, reading the wiring schematics, and applying the information for practical purposes, both enthusiasts and technicians can ensure that they achieve the best possible sound experience. Whether you are upgrading your system or simply maintaining it, a thorough understanding of the wiring diagram will undoubtedly enhance your audio journey in a Lexus equipped with Mark Levinson technology.

## **Frequently Asked Questions**

### **What is a Lexus Mark Levinson wiring diagram?**

A Lexus Mark Levinson wiring diagram is a schematic representation that shows the electrical connections and wiring layout for the Mark Levinson audio system installed in Lexus vehicles.

### **Where can I find a Lexus Mark Levinson wiring diagram?**

You can find a Lexus Mark Levinson wiring diagram in the vehicle's service manual, online automotive forums, or dedicated repair websites that offer wiring diagrams for various car models.

### **What tools do I need to read a Lexus Mark Levinson wiring diagram?**

To read a Lexus Mark Levinson wiring diagram, you typically need a digital multimeter, wire strippers, electrical tape, and possibly a flashlight for better visibility.

### **Can I use a Lexus Mark Levinson wiring diagram for troubleshooting?**

Yes, a Lexus Mark Levinson wiring diagram can be very useful for troubleshooting audio system issues, helping you identify faulty connections or components.

### **Are Lexus Mark Levinson wiring diagrams specific to each model?**

Yes, Lexus Mark Levinson wiring diagrams can vary between different Lexus models and years, so it's important to use the diagram specific to your vehicle.

### **What common issues can a Lexus Mark Levinson wiring diagram help diagnose?**

Common issues that can be diagnosed with a wiring diagram include speaker malfunctions, power supply problems, and connectivity issues within the audio system.

## **Do I need professional help to interpret a Lexus Mark Levinson wiring diagram?**

While not strictly necessary, having some basic knowledge of automotive electronics can be helpful. If you're unsure, consulting a professional is advisable.

## **Is there a digital version of the Lexus Mark Levinson wiring diagram available?**

Yes, many service manuals offer digital versions of wiring diagrams, and you can also find them on various automotive repair websites.

## **What should I do if I find a broken wire in the Lexus Mark Levinson wiring diagram?**

If you find a broken wire, you should repair it using appropriate techniques, such as soldering or using wire connectors, and then test the system to ensure functionality.

## **Can I modify my Lexus audio system using the wiring diagram?**

Yes, you can use the wiring diagram to modify your Lexus audio system, but be sure to understand the implications of any changes on the overall system performance.

Find other PDF article:

<https://soc.up.edu.ph/35-bold/pdf?trackid=WNY05-2151&title=k-iche-language-translator.pdf>

## **Lexus Mark Levinson Wiring Diagram**

### **Lexus Canada: Luxury Sedan, SUVs, Hybrids & Performance Cars | Lexus ...**

The official website of Lexus Canada. Learn more about latest models, dealer locations and financing information. Build & price your Lexus vehicle today.

### **Build and Price | Lexus Canada**

Build & Price the Lexus of your choice, including Packages, Accessories and Coverage. Request a Quote and book a Test Drive. All in a few simple steps.

### *Lexus SUVs: Luxury Mid-Size, Full-Size, Compact & Crossover | Lexus ...*

Discover the Lexus lineup of luxury SUVs made for Canada - subcompact, mid-size, full-size and the electrified lineup of luxury hybrid, PHEVs & electric SUVs.

### *Lexus | Experience Amazing*

Welcome to Lexus; official site. Explore the line of Lexus luxury sedans, SUVs, hybrids, performance cars and accessories, or find a Lexus dealer near you.

## **New & Used Lexus Dealer in Brampton, ON | Northwest Lexus**

New & Used cars in Brampton at Northwest Lexus. Serving Mississauga, Vaughan, and surrounding areas. Call (905) 494-1000 for more info about promotions & offers.

## **2025 Lexus IS 300, 350 & 500: Luxury Sedan | Lexus Canada**

2025 Lexus IS blends athletic design & performance. Explore Lexus IS 300 AWD, IS 350 AWD & IS 500 RWD models & reviews to find your next luxury sedan.

## Lexus Luxury Hybrid Cars & SUVs (HEV) | Lexus Canada

Explore Lexus Canada's line-up of luxury hybrid cars and SUVs. Learn about hybrid benefits, performance and fuel efficiency to find the best luxury hybrid for you.

## Ontario Lexus Dealer Association | Current Offers

Ontario Lexus Dealer Association menu close REQUEST A TEST DRIVE VISIT DEALER WEBSITE  
LIVE CHAT Français

## Lexus Canada : berlines de luxe, VUS, hybrides et voitures de ...

Le site officiel de Lexus Canada. Pour tout savoir sur les plus récents modèles, l'emplacement des concessionnaires et le financement. Configurez et calculez le prix de votre véhicule Lexus ...

## Lexus Luxury SUV | LX, GX, TX, RX, RZ, NX, UXh

From the off-road capability of the GX to the all-electric innovations found in the RZ, get to know all the driver-inspired features found across the entire Lexus SUV line.

## Lexus Canada: Luxury Sedan, SUVs, Hybrids & Performance Cars | Lexus ...

The official website of Lexus Canada. Learn more about latest models, dealer locations and financing information. Build & price your Lexus vehicle today.

## **Build and Price | Lexus Canada**

Build & Price the Lexus of your choice, including Packages, Accessories and Coverage. Request a Quote and book a Test Drive. All in a few simple steps.

## **Lexus SUVs: Luxury Mid-Size, Full-Size, Compact & Crossover | Lexus ...**

Discover the Lexus lineup of luxury SUVs made for Canada - subcompact, mid-size, full-size and the electrified lineup of luxury hybrid, PHEVs & electric SUVs.

## Lexus | Experience Amazing

Welcome to Lexus; official site. Explore the line of Lexus luxury sedans, SUVs, hybrids, performance cars and accessories, or find a Lexus dealer near you.

## New & Used Lexus Dealer in Brampton, ON | Northwest Lexus

New & Used cars in Brampton at Northwest Lexus. Serving Mississauga, Vaughan, and surrounding areas. Call (905) 494-1000 for more info about promotions & offers.

## 2025 Lexus IS 300, 350 & 500: Luxury Sedan | Lexus Canada

2025 Lexus IS blends athletic design & performance. Explore Lexus IS 300 AWD, IS 350 AWD & IS 500 RWD models & reviews to find your next luxury sedan.

## Lexus Luxury Hybrid Cars & SUVs (HEV) | Lexus Canada

Explore Lexus Canada's line-up of luxury hybrid cars and SUVs. Learn about hybrid benefits, performance and fuel efficiency to find the best luxury hybrid for you.



[Ontario Lexus Dealer Association | Current Offers](#)

Ontario Lexus Dealer Association menu close REQUEST A TEST DRIVE VISIT DEALER WEBSITE  
LIVE CHAT Français

[Lexus Canada : berlines de luxe, VUS, hybrides et voitures de ...](#)

Le site officiel de Lexus Canada. Pour tout savoir sur les plus récents modèles, l'emplacement des concessionnaires et le financement. Configurez et calculez le prix de votre véhicule Lexus ...

[Lexus Luxury SUV | LX, GX, TX, RX, RZ, NX, UXh](#)

From the off-road capability of the GX to the all-electric innovations found in the RZ, get to know all the driver-inspired features found across the entire Lexus SUV line.

Unlock the secrets of your Lexus audio system with our comprehensive Lexus Mark Levinson wiring diagram. Learn more to enhance your driving experience today!

[Back to Home](#)