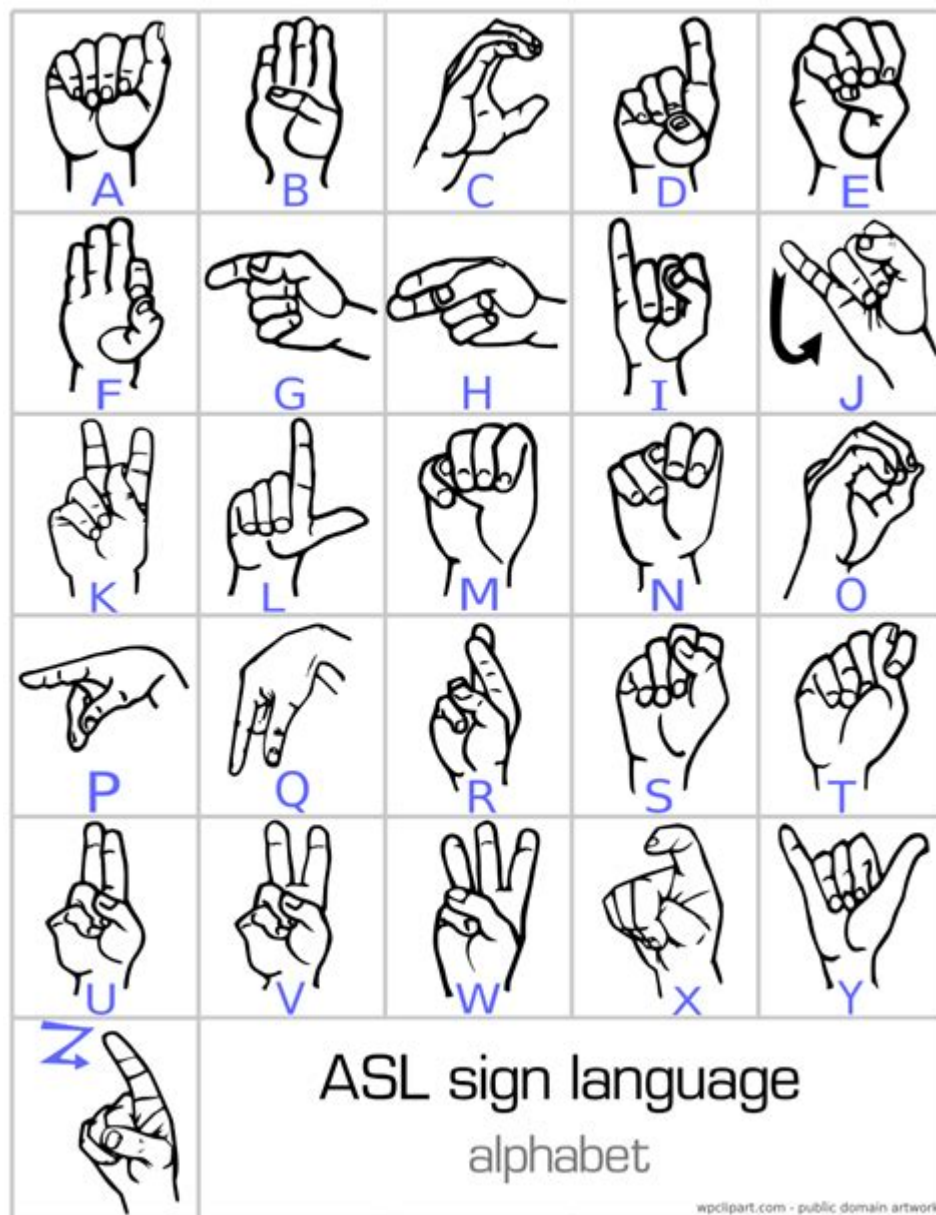


Letters In Sign Language Asl



Understanding Letters in American Sign Language (ASL)

Letters in sign language ASL are an essential aspect of communication for the deaf and hard-of-hearing community. American Sign Language (ASL) is a rich and expressive language that incorporates hand signs, facial expressions, and body movements to convey meaning. One of the fundamental components of ASL is its alphabet, which consists of hand signs that represent each letter of the English alphabet. This article will explore the significance of letters in ASL, the manual alphabet, and how it is used in everyday communication.

The Importance of the ASL Alphabet

The ASL alphabet serves multiple purposes:

1. **Spelling:** The manual alphabet allows users to spell out words that do not have a specific sign, including names, places, and technical terms.
2. **Clarity:** In situations where signs may be ambiguous or misunderstood, fingerspelling can clarify the intended meaning.
3. **Integration:** The ASL alphabet integrates seamlessly with other signs, allowing for fluid and dynamic communication.

Understanding letters in ASL is crucial for anyone looking to learn the language, whether for personal, professional, or social reasons.

The ASL Manual Alphabet

The ASL manual alphabet consists of 26 hand shapes, each representing a letter from A to Z. Below is a breakdown of the ASL alphabet:

1. **A:** Form a fist with your thumb resting on the side.
2. **B:** Hold your fingers straight up while keeping your thumb across your palm.
3. **C:** Curve your hand into a "C" shape.
4. **D:** Hold your index finger up while curling your other fingers down into your palm.
5. **E:** Keep your fingers together and bent at the knuckles, with your thumb pressing against the side.
6. **F:** Touch your thumb and index finger together while keeping the other fingers extended.
7. **G:** Extend your thumb and index finger, pointing them away from your body, while curling the other fingers in.
8. **H:** Hold your index and middle fingers together while keeping the other fingers curled.
9. **I:** Raise your pinky finger while keeping the others curled into your palm.
10. **J:** Use your pinky finger to draw a "J" in the air.
11. **K:** Extend your index and middle fingers in a "V" shape while raising your thumb.
12. **L:** Form an "L" shape with your thumb and index finger.
13. **M:** Place your thumb under your three fingers curled together.

14. **N:** Place your thumb under your two fingers curled together.
15. **O:** Form a circle with your fingers.
16. **P:** Hold your index and middle fingers in a "V" shape while pointing them down, with your thumb extended.
17. **Q:** Point your thumb and index finger down in a "Q" shape.
18. **R:** Cross your index and middle fingers.
19. **S:** Make a fist with your thumb resting on the front.
20. **T:** Make a fist with your thumb tucked between your index and middle fingers.
21. **U:** Hold your index and middle fingers together, pointing up.
22. **V:** Form a "V" shape with your index and middle fingers.
23. **W:** Hold your index, middle, and ring fingers up, forming a "W" shape.
24. **X:** Curl your fingers into a fist while extending your index finger to form a hook.
25. **Y:** Extend your thumb and pinky finger while curling the other fingers down.
26. **Z:** Use your index finger to draw a "Z" in the air.

How to Practice Fingerspelling

Learning to fingerspell effectively requires practice. Here are some tips for mastering the ASL manual alphabet:

- **Start Slow:** Begin by practicing each letter individually before attempting to spell out words.
- **Use Flashcards:** Create flashcards with the letter on one side and the corresponding sign on the other to test your memory.
- **Practice with a Partner:** Pair up with someone else learning ASL and practice fingerspelling back and forth.
- **Incorporate into Sentences:** Use fingerspelling in context by integrating it into short phrases or sentences.
- **Watch Videos:** There are numerous online resources and videos available that demonstrate fingerspelling in ASL.

Common Uses of Fingerspelling in ASL

Fingerspelling is used in various contexts within ASL:

1. Names: Proper nouns such as personal names, city names, and brand names are often fingerspelled.
2. Technical Terms: Words that may not have a widely recognized sign or that are specific to a certain field (e.g., scientific terms).
3. Clarification: When a sign may have multiple meanings, fingerspelling can clarify the intended word or concept.

Understanding ASL Beyond Letters

While letters in ASL are fundamental, it is crucial to acknowledge that ASL is a complete language with its own grammar, syntax, and cultural nuances. The following points illustrate the broader context of ASL:

- Visual Language: ASL relies heavily on visual cues, including facial expressions and body language, to convey tone and emotion.
- Conceptual Signing: In many cases, ASL uses signs that represent concepts rather than direct translations of English words, making it distinct from simply spelling out English.
- Cultural Context: ASL is not just a method of communication but also a critical part of Deaf culture, which encompasses shared experiences, values, and traditions.

Conclusion

Letters in sign language ASL are crucial for effective communication within the deaf and hard-of-hearing community. By mastering the ASL manual alphabet and understanding its applications, learners can enhance their ability to engage with ASL speakers. Fingerspelling is an indispensable tool that complements the rich, expressive nature of ASL, allowing for a deeper connection and clearer communication. Whether you are learning ASL for personal growth, social interaction, or professional development, embracing the manual alphabet will undoubtedly enrich your experience in this vibrant language.

Frequently Asked Questions

What is American Sign Language (ASL) and how does it represent letters?

American Sign Language (ASL) is a visual language that uses hand shapes, facial expressions, and body movements to convey meaning. Each letter of the English alphabet has a corresponding hand sign, allowing fingerspelling of words.

Mar 20, 2025 · 中国科学院物理研究所 SCPMA 中国科学院 Science China-Physics Mechanics & Astronomy 2025 1 ...

Keyboard letters don't work to login to Windows User account ...

Oct 8, 2017 · Keyboard letters don't work to login to Windows User account. Hello, For the last few days, I can't seem to be able to login to my user account on the windows login screen. When it ...

how do i increase text size permanently in outlook email - Microsoft ...

May 6, 2023 · Windows, Surface, Bing, Microsoft Edge, Windows Insider, Microsoft Advertising, Microsoft 365 and Office, Microsoft 365 Insider, Outlook and Microsoft Teams forums are ...

Physical Review Letters -

Physical Review Letters PRL 2025 1 ...

EXCEL - if cell does not contain specific text, formula? - Microsoft ...

Aug 16, 2024 · Hello. What is the formula I should use to find cells in column A that contain 'accounts'. If YES, column B would be a blank cell. If NO, A would repeat in column B.

Article Review Letter -

Jan 21, 2014 · Article Review Letter ...

AM AFM ACS Nano Nano Letters ...

3. Nano Letters 12 2023 ...

sci letters research -

Feb 16, 2024 · sci letters research letters ...

In Word, after creating a mail merge, how to save each reco...

Individual merge letters by Graham Mayor, MVP Merge Tools by Doug Robbins, MVP See Send Mailmerge ...

Some letters and numbers are not working on laptop's keyb...

Jun 21, 2022 · So as the title of this post says , some letters and numbers on my keyboard won't work i.e I can type ...

2025 -

Mar 20, 2025 · 中国科学院物理研究所 SCPMA 中国科学院 Science China ...

Keyboard letters don't work to login to Windows User accou...

Oct 8, 2017 · Keyboard letters don't work to login to Windows User account. Hello, For the last few days, I can't ...

"Master the letters in sign language (ASL) with our comprehensive guide. Learn how to communicate effectively and express yourself through signs. Discover how!"

[Back to Home](#)