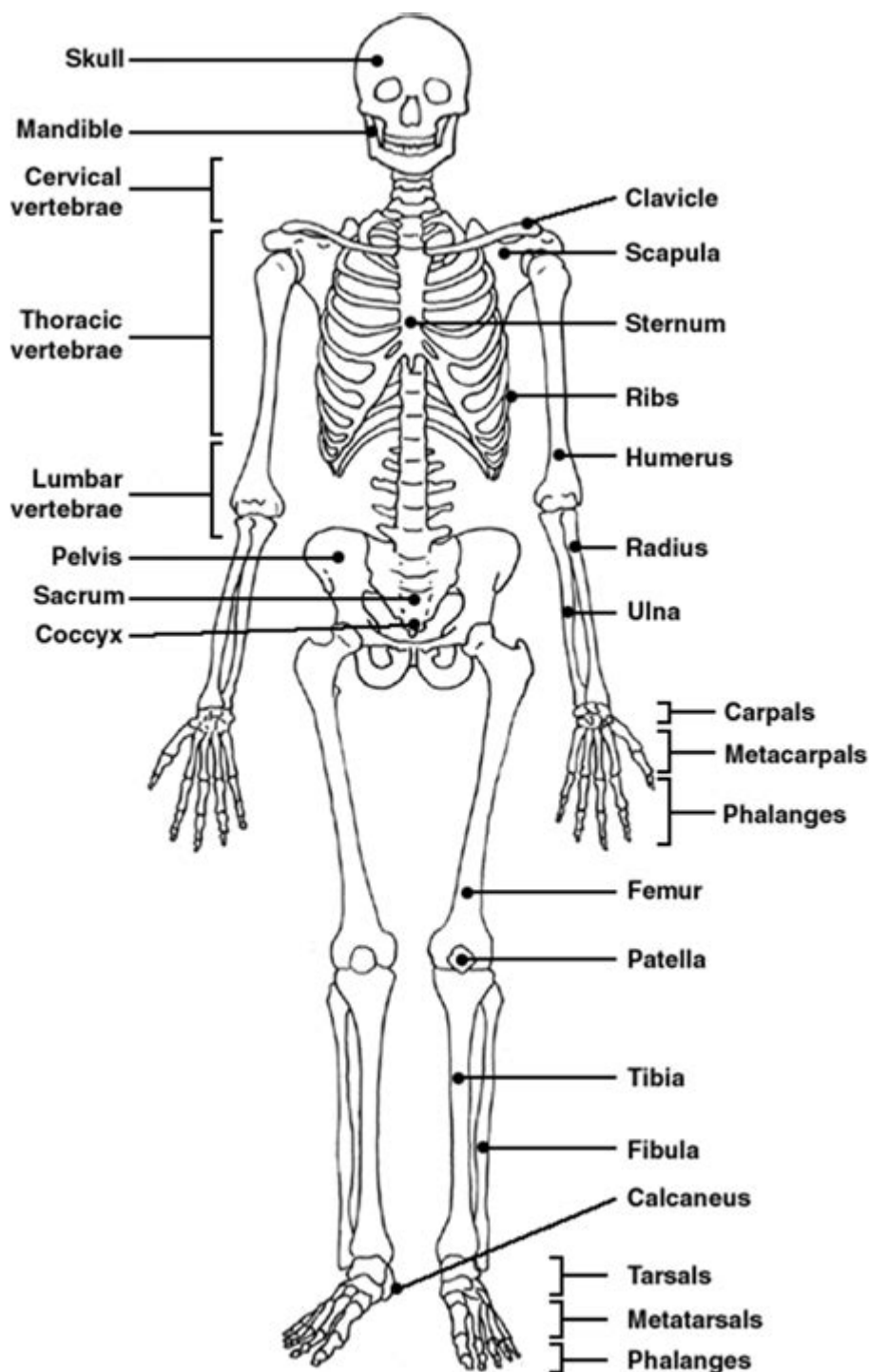


# Label A Skeleton Worksheet



**Label a skeleton worksheet** is an educational tool that serves as a foundational resource for students learning about human anatomy, particularly the skeletal system. Understanding the skeleton is crucial for various fields, including medicine, biology, and physical education. This article will delve into the components of a label a skeleton worksheet, its educational significance, methods for effective use, and tips for creating your own worksheets.

# Understanding the Skeletal System

The human skeletal system is a complex framework that provides structure, support, and protection for the body. It consists of 206 bones in adults, along with cartilage, ligaments, and other connective tissues. The skeletal system can be broadly categorized into two main regions:

## 1. Axial Skeleton

The axial skeleton comprises the bones along the body's central axis. It includes:

- Skull: Protects the brain and forms the structure of the face.
- Vertebral Column: Composed of vertebrae that protect the spinal cord and support the head.
- Rib Cage: Encloses the thoracic cavity, protecting vital organs like the heart and lungs.

## 2. Appendicular Skeleton

The appendicular skeleton includes the bones of the limbs and the girdles that attach them to the axial skeleton. It consists of:

- Shoulder Girdle: Clavicles and scapulae that connect the arms to the trunk.
- Upper Limbs: Humerus, radius, and ulna, along with the bones of the hand.
- Pelvic Girdle: Comprising the hip bones, it connects the legs to the torso.
- Lower Limbs: Femur, tibia, and fibula, along with the bones of the foot.

# Components of a Label a Skeleton Worksheet

A label a skeleton worksheet typically contains a diagram of the human skeleton, often in a simplified or stylized format. The primary components of such a worksheet include:

## 1. Diagram of the Skeleton

The centerpiece of the worksheet is the skeletal diagram, which should clearly illustrate major bones and landmarks. Key bones to include are:

- Skull
- Clavicle
- Scapula
- Sternum
- Ribs
- Vertebrae
- Humerus
- Radius

- Ulna
- Pelvis
- Femur
- Tibia
- Fibula
- Patella
- Metatarsals
- Phalanges

## **2. Labels and Numbering**

Each bone in the diagram should be labeled clearly. This can be done through:

- Direct Labeling: Labels placed directly on or near the corresponding bones.
- Numbering System: A number next to each bone that corresponds to a list of names provided elsewhere on the worksheet.

## **3. Answer Key**

An answer key is essential for educators and students alike. It provides the correct names of the bones for reference, ensuring that learners can check their work and understand any mistakes they may have made.

# **Educational Significance of Label a Skeleton Worksheets**

Label a skeleton worksheets play a vital role in the educational process. They offer several benefits:

## **1. Enhancing Memory Retention**

Visual aids, such as skeleton diagrams, help students remember anatomical terms more effectively. By associating words with images, students can improve their ability to recall information during exams and practical applications.

## **2. Promoting Active Learning**

Worksheets encourage active participation. Instead of passively receiving information, students engage with the material by identifying and labeling bones. This hands-on approach can lead to a deeper understanding of the subject matter.

### **3. Cross-Disciplinary Relevance**

Understanding the skeletal system is not limited to biology. Knowledge of anatomy is essential for health professionals, athletes, and anyone interested in physical fitness or rehabilitation. Label a skeleton worksheets can thus serve various educational contexts.

### **4. Assessment and Evaluation**

Instructors can use these worksheets as assessment tools to gauge students' understanding of skeletal anatomy. They can serve as pre-tests or post-tests to measure learning progress.

## **Methods for Effective Use of Label a Skeleton Worksheets**

To maximize the benefits of label a skeleton worksheets, consider the following methods:

### **1. Group Activities**

Encouraging students to work in small groups can foster collaboration and discussion. Students can share knowledge, quiz one another, and collectively label the skeleton. This approach reinforces learning through peer interaction.

### **2. Incorporating Technology**

Utilize digital versions of label a skeleton worksheets. Online interactive platforms allow for dynamic labeling activities where students can click on bones to receive additional information or engage in quizzes.

### **3. Integrating Other Learning Tools**

Combine the worksheet with other resources, such as videos, models, or virtual reality experiences. This multi-faceted approach can cater to different learning styles and provide a comprehensive understanding of skeletal anatomy.

### **4. Hands-On Learning**

Consider incorporating models or 3D printed skeletons for a tactile experience. Students can manipulate the models to understand bone positioning and relationships better.

# Tips for Creating Your Own Label a Skeleton Worksheets

If you're interested in designing your own label a skeleton worksheets, here are some tips to consider:

## 1. Choose the Right Diagram

Select a clear and accurate diagram of the human skeleton. Ensure that the illustration is appropriately detailed for the educational level of the students using it.

## 2. Determine the Focus

Decide whether you want students to identify all bones or just specific ones. You might create different worksheets targeting various levels of detail, such as focusing only on major bones for younger students or including smaller bones for advanced learners.

## 3. Use Clear Labels

Ensure that labels are legible and correctly spelled. Use a font size that is easy to read, and consider using color coding to differentiate between the axial and appendicular skeletons.

## 4. Provide Contextual Information

Consider adding brief descriptions or functions of each bone next to the labels. This additional information can enhance students' understanding of the skeletal system's role in the human body.

## 5. Test Your Worksheet

Before distributing the worksheet to students, test it yourself or have a colleague review it. This process can help identify any areas that may be confusing or require clarification.

## Conclusion

In conclusion, label a skeleton worksheets are invaluable educational tools that enhance understanding of the human skeletal system. By providing a visual representation of bones, these worksheets promote active learning, memory retention, and collaborative study. Whether you're an educator developing resources for your students or a student seeking to reinforce your knowledge,

label a skeleton worksheets can significantly aid in mastering anatomy. With thoughtful design and effective teaching strategies, these worksheets can empower learners across various fields to appreciate the complexities of the human body.

## **Frequently Asked Questions**

### **What is a label a skeleton worksheet used for?**

A label a skeleton worksheet is primarily used in educational settings to help students learn about human anatomy by identifying and labeling the different bones of the skeleton.

### **At what educational level are label a skeleton worksheets typically used?**

Label a skeleton worksheets are commonly used in elementary and middle school science classes, but they can also be adapted for high school biology courses.

### **Can label a skeleton worksheets be used for online learning?**

Yes, many educators create digital versions of label a skeleton worksheets that can be completed online, making them suitable for remote learning environments.

### **What are some tips for effectively using a label a skeleton worksheet in the classroom?**

Some tips include providing a brief introduction to the skeletal system, encouraging group discussions, and integrating hands-on activities like using models to reinforce learning.

### **Are there variations of label a skeleton worksheets available?**

Yes, there are various versions available, including those that focus on different age groups, levels of detail, and even specific types of skeletons such as human, animal, or dinosaur skeletons.

### **How can teachers assess student understanding after using a label a skeleton worksheet?**

Teachers can assess understanding through follow-up quizzes, group presentations, or by asking students to create their own diagrams explaining the functions of different bones.

Find other PDF article:

<https://soc.up.edu.ph/24-mark/files?trackid=ReC82-7396&title=generac-automatic-transfer-switch-wiring-diagram.pdf>

# Label A Skeleton Worksheet

label label \_

labeled labelled labeled labelled label /'leɪbəl/ CET4 TEM4 [ labeling labeled labels ] 1. A label is a piece of paper or plastic that is ...

Label, color, or pin notes - Android - Google Keep Help

Label, color, or pin notes To sort and find your notes in Google Keep, you can label, color, and pin notes. If you're sharing a note, only you'll be able to see your labels, colors, and pins. You can ...

**View, group & share contacts - Computer - Contacts Help**

Tip: If a contact has multiple email addresses, only their default email address is added to the label group. You can use the Contacts app on an Android device to change the default email ...

**Label your face group - Computer - Google Photos Help**

Label your face group When you label your face group as 'me', you: Get more personalised creations. For example, a Highlight video that has photos of you. Get personalised search. ...

Create labels to organize Gmail - Android - Gmail Help

To the left of a message, touch and hold the letter or photo. touch and hold any other messages you want to add labels to.

**Give a place a private label - Computer - Google Maps Help**

You can add a private label to places on your map. Labeled places show up on your map, in search suggestions, and in Google Photos. To add a label, follow the steps below. On your ...

Set up & manage your face groups - Computer - Google Help

At the top of a face group, click Add a name. Enter a name or nickname. You can search with that label. Learn more about searching for your photos. Manage your Face Groups Combine face ...

**View, group & share contacts - Android - Contacts Help**

Add multiple contacts to a label: Tap Add contact . Touch and hold a contact. Tap other contacts you want to add Add. Tip: If a contact has multiple email addresses, only their default email ...

Create, edit, manage, or delete a post - Blogger Help

Sign in to Blogger. To open the editor view, click an existing post or click New post . On the right, click Labels . Enter a label or click an existing label. To add more than one label to a post, ...

Tag Label Category -

Label Tag tag label ...

label label \_

labeled labelled labeled labelled label /'leɪbəl/ CET4 TEM4 [ labeling labeled labels ] 1. A label is a piece of paper or plastic that ...

Label, color, or pin notes - Android - Google Keep Help

Label, color, or pin notes To sort and find your notes in Google Keep, you can label, color, and pin notes. If you're sharing a note, only you'll be able to see your labels, colors, and pins. ...

### **View, group & share contacts - Computer - Contacts Help**

Tip: If a contact has multiple email addresses, only their default email address is added to the label group. You can use the Contacts app on an Android device to change the default ...

### **Label your face group - Computer - Google Photos Help**

Label your face group When you label your face group as 'me', you: Get more personalised creations. For example, a Highlight video that has photos of you. Get personalised search. ...

### **Create labels to organize Gmail - Android - Gmail Help**

To the left of a message, touch and hold the letter or photo. touch and hold any other messages you want to add labels to.

"Enhance learning with our engaging label a skeleton worksheet! Perfect for classrooms or home study. Discover how to make anatomy fun and educational!"

[Back to Home](#)