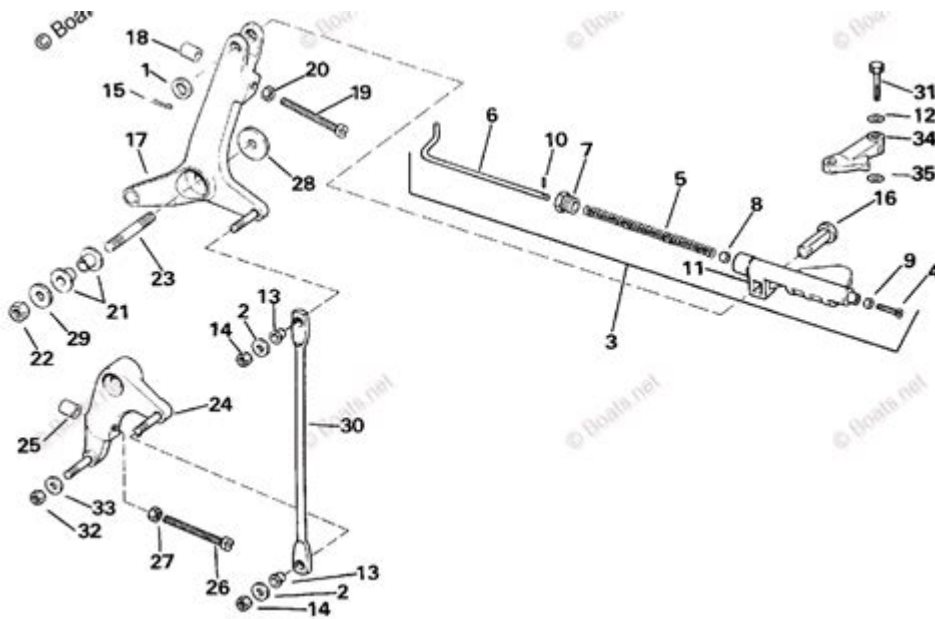


Johnson Outboard Throttle Linkage Diagram



Johnson outboard throttle linkage diagram is essential for anyone looking to maintain or repair their Johnson outboard motor. Understanding how the throttle linkage works is crucial for ensuring that your engine operates smoothly and efficiently. This article will provide an in-depth look at the throttle linkage system, the importance of having a clear diagram, and tips for troubleshooting and maintenance.

Understanding Throttle Linkage in Johnson Outboards

Throttle linkage in Johnson outboards connects the throttle control to the engine's carburetor or fuel injection system. This linkage helps regulate the engine's speed and power output by controlling the amount of air and fuel mixture that enters the engine.

Components of the Throttle Linkage System

The throttle linkage system consists of several key components, which include:

- **Throttle Control Lever:** This is located on the boat's control panel and is used to adjust the throttle position.
- **Throttle Cables:** These cables connect the throttle control lever to the

throttle arm on the engine.

- **Throttle Arm:** This component is attached to the carburetor or fuel injection system and is moved by the throttle cables.
- **Linkage Rods:** These rods connect different components of the throttle system, allowing for synchronized movement between the throttle control and the engine.
- **Return Springs:** These springs ensure that the throttle returns to the idle position when the throttle control is released.

The Importance of a Throttle Linkage Diagram

A Johnson outboard throttle linkage diagram is invaluable for several reasons:

1. Visual Reference

Having a visual reference helps you understand how the various components of the throttle linkage system are interconnected. This can be particularly helpful when troubleshooting issues or making repairs.

2. Accurate Repairs

When replacing or repairing components, a diagram ensures you reconnect everything correctly. Incorrect assembly can lead to poor engine performance or even damage.

3. Enhanced Maintenance

Regular maintenance is crucial for the longevity of your outboard motor. A throttle linkage diagram can guide you in assessing the condition of components and identifying any that may need lubrication or replacement.

Common Issues with Throttle Linkage

Understanding common issues with throttle linkage can help you diagnose and fix problems quickly. Here are some frequent issues you may encounter:

- **Sticking Throttle:** This can happen due to dirt, corrosion, or a lack of

lubrication. Regular cleaning and maintenance can help prevent this issue.

- **Misalignment:** If the throttle linkage is not properly aligned, it can cause erratic engine performance. Ensure that all rods and cables are correctly positioned.
- **Broken Cables:** Throttle cables can wear out over time and may need replacement. Regularly check for fraying or damage.
- **Weak Return Springs:** If the return springs are too weak, the throttle may not return to the idle position, leading to increased fuel consumption and potential engine damage.

Troubleshooting Throttle Linkage Problems

When troubleshooting throttle linkage issues, follow these steps:

Step 1: Visual Inspection

Begin by conducting a visual inspection of the throttle linkage components. Look for any signs of wear, rust, or misalignment. Ensure that all components are securely fastened.

Step 2: Check the Throttle Cables

Inspect the throttle cables for any signs of fraying or damage. If you notice any issues, replace the cables to ensure smooth operation.

Step 3: Test the Throttle Control Lever

Operate the throttle control lever and observe how the throttle arm responds. If there is a delay or if the throttle does not move smoothly, further investigation may be needed.

Step 4: Adjust Linkage Rods

If the throttle arm is not properly aligned with the carburetor, adjust the linkage rods as necessary. Refer to your throttle linkage diagram for correct positioning.

Step 5: Lubricate Moving Parts

Regular lubrication of the throttle linkage components can prevent sticking and ensure smooth operation. Use a marine-grade lubricant for best results.

Maintaining Your Johnson Outboard Throttle Linkage

Proper maintenance of your throttle linkage system can prolong its lifespan and enhance performance. Here are some maintenance tips:

- **Regular Cleaning:** Keep all components clean and free from debris. Use a soft brush and a mild cleaning solution.
- **Inspect for Wear:** Periodically check for signs of wear or damage to cables, rods, and springs.
- **Lubrication:** Apply lubricant to moving parts at least once a season, or more frequently if you use your boat often.
- **Adjust as Needed:** Regularly check the alignment of the throttle linkage and make adjustments as needed to ensure optimal performance.

Resources for Johnson Outboard Throttle Linkage Diagrams

Finding a reliable Johnson outboard throttle linkage diagram can sometimes be challenging. Here are some resources where you can locate diagrams and manuals:

- **Manufacturer's Website:** Check the official Johnson outboard website for downloadable manuals and diagrams.
- **Online Forums:** Websites like forums and boating communities can be a wealth of information, often providing shared diagrams from other enthusiasts.
- **Marine Supply Stores:** Local marine supply stores often carry manuals and diagrams for various outboard models.
- **Service Manuals:** Consider purchasing a service manual specific to your Johnson outboard model for comprehensive diagrams and repair

instructions.

Conclusion

In summary, understanding the **Johnson outboard throttle linkage diagram** is crucial for the effective maintenance and repair of your outboard motor. Familiarizing yourself with the components and their functions will enable you to troubleshoot issues efficiently and ensure your engine runs smoothly. Regular inspections and maintenance will prolong the life of your throttle linkage system and enhance your overall boating experience. Don't hesitate to seek out resources and diagrams that can assist you in this endeavor, ensuring that you can enjoy your time on the water without worry.

Frequently Asked Questions

What is a Johnson outboard throttle linkage diagram used for?

A Johnson outboard throttle linkage diagram is used to illustrate the connection between the throttle control and the engine components, helping users understand how to properly adjust or repair the throttle system.

Where can I find a Johnson outboard throttle linkage diagram?

You can find a Johnson outboard throttle linkage diagram in the service manuals, online forums dedicated to outboard motors, or on various marine repair websites.

How do I interpret the symbols in a Johnson outboard throttle linkage diagram?

The symbols in a Johnson outboard throttle linkage diagram typically represent different components such as the throttle cable, linkage arms, and the engine. A legend or key is usually provided to explain each symbol.

What are common issues that can be diagnosed using a throttle linkage diagram?

Common issues include improper throttle response, difficulty in shifting gears, or the engine not reaching full throttle, which can often be traced back to misalignments or worn components shown in the diagram.

Can I use a throttle linkage diagram from a different outboard brand for my Johnson outboard?

It is not recommended to use a throttle linkage diagram from a different brand, as each design might have specific configurations and components that differ, potentially leading to improper installation or performance issues.

What tools do I need to adjust the throttle linkage according to the diagram?

To adjust the throttle linkage, you generally need basic hand tools such as wrenches, pliers, and screwdrivers, along with any specific tools mentioned in the Johnson service manual.

Is it necessary to have a throttle linkage diagram for routine maintenance?

While not strictly necessary, having a throttle linkage diagram can greatly assist in understanding the throttle system, making routine maintenance and adjustments more straightforward and effective.

How often should I check the throttle linkage on my Johnson outboard?

It is advisable to check the throttle linkage regularly, especially before and after the boating season, or if you notice any performance issues, to ensure proper operation and prevent potential damage.

Find other PDF article:

<https://soc.up.edu.ph/25-style/pdf?trackid=KLZ06-0333&title=go-fish-guide-service.pdf>

Johnson Outboard Throttle Linkage Diagram

APA -

Dec 20, 2023 · APA

Johnson-cook -

Johnson-Cook Johnson Cook 80 Johnson-Cook ...

Johnson -

Johnson Johnson Johnson ...

John -

John the Baptist ...

Johnson JG-6100N -

May 24, 2021 · Johnson 10 Johnsonjd16 ...

Smith, John D., and Johnson, Anna B. Research Report on Climate Change. 2019. Research Center. ...

Smith, John D., and Johnson, Anna B. Research Report on Climate Change. 2019. Research Center. ...

Johnson-Cook ABAQUS ...

Johnson-Cook ABAQUS ...

Q460 JOHNSON COOK -

Johnson-Cook SHPB 150 Johnson-Cook ...

Earvin Johnson -

Earvin Johnson 1959 8 14 “” Magic ...

Samuel Johnson?

In Johnson’s narrative, Rasselas, son of the King of Abyssinia, modern-day Ethiopia, is forced to remain in a beautiful valley until the order of succession should make him King. He grows ...

APA -

Dec 20, 2023 · APA APA

Johnson-cook -

Johnson-Cook Johnson Cook 80 Johnson-Cook ...

Johnson -

Johnson Johnson ...

John -

John the Baptist ...

Johnson JG-6100N -

May 24, 2021 · Johnson 10 Johnsonjd16 ...

Smith, John D., and Johnson, Anna B. Research Report on Climate Change. 2019. Research Center. ...

Smith, John D., and Johnson, Anna B. Research Report on Climate Change. 2019. Research Center. ...

