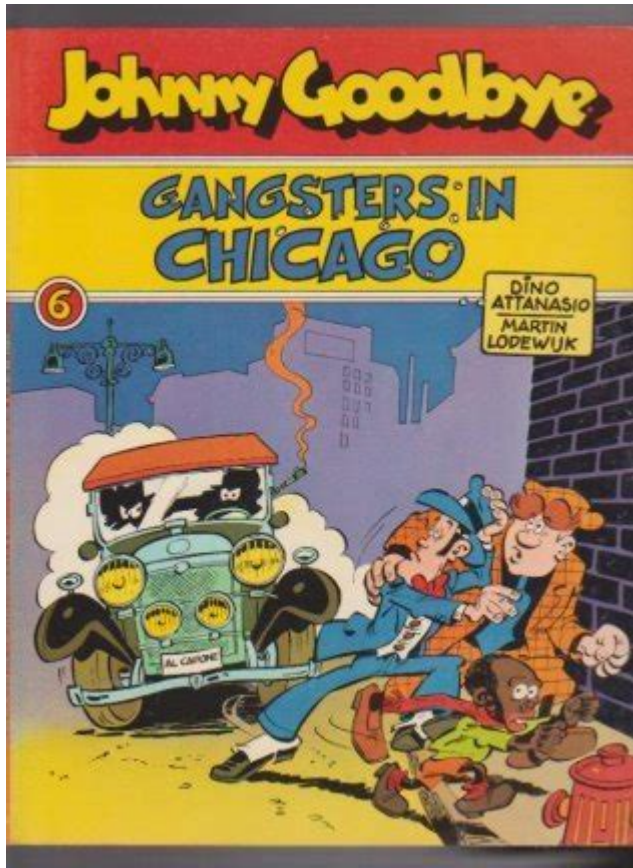


# Johnny Goodbije Gangsters In Chicago



## Johnny Goodbye Gangsters in Chicago

The Chicago underworld has long been a subject of fascination and intrigue, filled with tales of crime, loyalty, and betrayal. At the center of this narrative lies the notorious Johnny Goodbye gangsters. This group, rooted deeply in the city's history, has played a pivotal role in the evolution of organized crime in the Windy City. This article delves into the origins, operations, and impact of the Johnny Goodbye gangsters, providing a comprehensive overview of their place in Chicago's criminal landscape.

## Origins of the Johnny Goodbye Gang

The Johnny Goodbye gang emerged during a tumultuous period in Chicago's history, marked by Prohibition and rampant gang violence. Their rise to prominence can be traced back to the early 1920s when the demand for illegal alcohol created a fertile ground for organized crime.

## Prohibition Era: A Catalyst for Crime

- The 18th Amendment, enacted in 1920, prohibited the manufacture, sale, and transportation of alcoholic beverages.
- This led to the birth of numerous gangs, vying for control over the lucrative illegal liquor trade.
- The Johny Goodbije gang quickly established themselves within this chaotic environment, capitalizing on opportunities presented by Prohibition.

## Leadership and Structure

The gang was initially led by Johny Goodbije himself, a shrewd and ambitious figure. Under his leadership, the organization adopted a hierarchical structure:

1. Boss: The ultimate authority within the gang, responsible for major decisions and strategies.
2. Underboss: The second-in-command, handling day-to-day operations and managing various gang activities.
3. Capos: Lieutenants who oversaw different territories or specific illegal operations.
4. Soldiers: The foot soldiers of the gang, who executed tasks ranging from protection rackets to violent enforcement.

## Criminal Enterprises

The Johny Goodbije gang's operations extended beyond the bootlegging of alcohol. They diversified their criminal activities to ensure a steady stream of income.

## Key Criminal Activities

- Drug Trafficking: As laws surrounding narcotics tightened, the gang began to engage in the illegal drug trade, distributing substances across Chicago.
- Extortion and Protection Rackets: They targeted local businesses, demanding payments for "protection" from potential violence or vandalism.
- Gambling Operations: The gang ran illegal gambling dens, capitalizing on the city's penchant for betting and games of chance.
- Murder and Violence: The Johnny Goodbije gang was notorious for its brutal enforcement methods, often resorting to violence to settle disputes and eliminate rivals.

## Rivalries and Conflicts

The rise of the Johnny Goodbije gang inevitably led to conflicts with other criminal organizations. As they expanded their influence, they encountered several rival gangs, notably the infamous North Side Gang and the Chicago Outfit.

## The North Side Gang

- The North Side Gang, led by figures such as George "Bugs" Moran, was one of the Johnny Goodbije gang's most formidable rivals.
- Tensions escalated, leading to violent confrontations and efforts to undermine each other's operations.
- The rivalry culminated in several high-profile assassinations, significantly altering the landscape of organized crime in Chicago.

## **The Chicago Outfit**

- The Chicago Outfit, led by the notorious Al Capone, posed another significant threat to the Johnny Goodbije gang.
- The Outfit sought to consolidate power over Chicago's criminal enterprises, leading to clashes over territory and control.
- The competition for dominance resulted in several violent incidents, further entrenching the gang's reputation for brutality.

## **Law Enforcement Crackdown**

As the Johnny Goodbije gang grew in notoriety, so did the attention from law enforcement agencies. The rise of organized crime in Chicago prompted a concerted effort to dismantle these powerful groups.

## **Government Initiatives**

- The Federal Bureau of Investigation (FBI) and local law enforcement agencies began to focus on organized crime, leveraging wiretaps and undercover operations to infiltrate gangs.
- High-profile arrests and prosecutions of gang leaders aimed to disrupt their operations and diminish their influence.

## **Impact of Law Enforcement on the Gang**

- Increased scrutiny led to a decline in the Johnny Goodbije gang's activities.
- Many members were arrested, and the organization's structure began to crumble under the pressure of law enforcement.

# Decline and Legacy

The Johnny Goodbije gang's decline can be attributed to a combination of internal strife, law enforcement pressure, and the changing dynamics of organized crime in Chicago.

## Factors Contributing to Decline

1. Arrests and Incarcerations: Key leaders and members faced significant legal challenges, leading to a loss of control and operational capacity.
2. Increased Rivalry: As the gang weakened, other organizations, particularly the Chicago Outfit, sought to absorb their territory and influence.
3. Changing Criminal Landscape: The rise of new criminal enterprises and evolving law enforcement tactics made it difficult for the gang to maintain its previous level of power.

## Legacy of the Johnny Goodbije Gang

Despite their decline, the Johnny Goodbije gang left an indelible mark on Chicago's criminal history. Their story is emblematic of the broader narrative of organized crime in the city, highlighting themes of ambition, violence, and the pursuit of power.

- The gang's influence can still be felt in contemporary organized crime, as many of their tactics and structures have been adopted by newer criminal organizations.
- Their legacy is preserved in popular culture, inspiring numerous films, books, and documentaries that explore the allure and dangers of the gangster lifestyle.

## Conclusion

The Johnny Goodbije gangsters in Chicago represent a significant chapter in the city's storied history of organized crime. From their emergence during Prohibition to their eventual decline under law enforcement pressure, the gang's narrative is a complex interplay of ambition, violence, and resilience. While their power may have waned, their impact on Chicago's criminal landscape endures, serving as a reminder of the city's tumultuous past and the ever-evolving nature of organized crime. The story of the Johnny Goodbije gang is not just a tale of criminals; it is a reflection of a society grappling with issues of law, order, and morality.

## Frequently Asked Questions

### **Who is Johnny Goodbije and what is his significance in Chicago's gangster history?**

Johnny Goodbije is a notorious figure in Chicago's underworld, known for his involvement in organized crime during the late 20th century. He gained notoriety for his role in various criminal activities, including racketeering and drug trafficking, contributing to the city's infamous gangster reputation.

### **What impact did Johnny Goodbije have on the current state of gangs in Chicago?**

Johnny Goodbije's influence can still be seen in the structure and operations of modern gangs in Chicago. His approach to gang leadership and organization has set a precedent for how organized crime functions today, often involving complex networks and violent enforcement tactics.

### **What are some major crimes associated with Johnny Goodbije?**

Johnny Goodbije has been linked to several major crimes, including drug trafficking, extortion, and violent crimes such as assaults and murders. His criminal operations were known for their

ruthlessness, often leading to internal conflicts within rival gangs.

## **How did law enforcement respond to Johnny Goodbije's criminal activities?**

Law enforcement agencies in Chicago have made significant efforts to dismantle Johnny Goodbije's operations through undercover investigations, surveillance, and coordinated raids. These efforts have led to numerous arrests and convictions within his gang.

## **What is the legacy of Johnny Goodbije in pop culture?**

Johnny Goodbije's life and criminal exploits have inspired various forms of media, including documentaries, books, and films that depict the gritty reality of gang life in Chicago. His story serves as a cautionary tale about the dangers of organized crime.

## **Are there any current gangs in Chicago that can be traced back to Johnny Goodbije?**

Yes, several current gangs in Chicago can trace their origins or influence back to Johnny Goodbije. His criminal networks have evolved over the years, leading to the formation of new gangs that continue to operate in similar ways.

## **What measures are being taken to combat gang violence in Chicago linked to figures like Johnny Goodbije?**

To combat gang violence linked to figures like Johnny Goodbije, Chicago has implemented community-based programs, increased police presence in high-crime areas, and engaged in partnerships with local organizations to provide youth with alternatives to gang involvement.

Find other PDF article:

<https://soc.up.edu.ph/48-shade/Book?dataid=Whe50-5970&title=prediction-machines-the-simple-economics-of-artificial-intelligence.pdf>

# **Johny Goodbye Gangsters In Chicago**

## **Filing a Lawsuit - U.S. Equal Employment Opportunity Commission**

When deciding whether to file a lawsuit, the EEOC considers factors such as the strength of the evidence, the issues in the case, and the wider impact the lawsuit could have on the EEOC's ...

## **Does the EEOC Always Issue a Right to Sue Letter?**

Jan 18, 2025 · Explore the nuances of EEOC's right to sue letters, reasons for non-issuance, and guidance on next steps and legal advice. The Equal Employment Opportunity Commission ...

## **Filing a Charge of Employment Discrimination - EEOC**

Any individual who believes that his or her employment rights have been violated may file a charge of discrimination with EEOC. In addition, an individual, organization, or agency may file ...

## ***How To File a Discrimination Complaint With the EEOC***

Jun 16, 2025 · The EEOC handles federal employment discrimination claims. This article covers the EEOC complaint process, including reporting, mediation, and what you can do if the EEOC ...

## **Filing a Charge of Discrimination with the Equal Employment Opportunity ...**

Such a filing is nearly always required before the complainant can file an employment discrimination lawsuit against their employer. The alleged discrimination may arise out of many ...

## **Top 5 Reasons to Have an Attorney File Your EEOC Complaint**

Filing a charge of discrimination with the EEOC is just one step in a legal process that often requires filing a lawsuit in court. For this reason, employers retain defense attorneys early on ...

## **How to File a Charge of Employment Discrimination**

The laws enforced by EEOC, except for the Equal Pay Act, require you to file a charge before you can file a lawsuit for unlawful discrimination. There are strict time limits for filing a charge.

## **How Serious Is an EEOC Complaint and What Should You Expect?**

Jan 20, 2025 · Understand the implications of an EEOC complaint and learn what to anticipate during the investigation and resolution process.

## **How do I file a claim for discriminatory practices?**

Claims of discrimination in Tennessee should be forwarded either to the Tennessee Human Rights Commission in Nashville Tennessee at (615) 741-5825, or to the Equal Employment ...

## **Filing An EEOC Complaint in Tennessee | Nashville Employment ...**

Our Nashville EEOC lawyers represent employees who have been wrongfully discharged or retaliated against by their employers. You can contact us at the number above or online for a ...

## ***East Metro Health District - Public Health Departments***

East Metro Health District Gwinnett, Newton and Rockdale County Health Departments have six convenient clinic locations as well as three Environmental Health offices. The clinics provide a ...

## **East Metro Public Health District Administrative Office - Lawrenceville ...**

About East Metro Public Health District Administrative Office Northside Hospital Gwinnett, formerly known as Northside Hospital Gwinnett, is a 353-bed hospital serving the counties of ...

DISTRICT 3-4 / LAWRENCEVILLE / East Metro Health District

COVID Testing Patient Line DISTRICT 3-4 / LAWRENCEVILLE / East Metro Health District

### **Health Department - Gwinnett | Gwinnett County**

The Gwinnett, Newton, and Rockdale County Health Departments provides public health services through a district office in Lawrenceville. By clicking the [www.gnrhealth.com](http://www.gnrhealth.com) link, you will leave ...

### **GNR Health - Healthy. Protected. Prepared.**

GNR Public Health provides local, essential public health services to people who live, work and play in District 3-4, serving Gwinnett, Newton, and Rockdale counties. We work under the ...

*East Metro Public Health District Administrative Office - Lawrenceville*

East Metro Public Health District Administrative Office is the health department in Lawrenceville, GA. Their profile includes directions, federal description, their phone number, website (when ...

*East Metro Public Health System*

East Metro Public Health District Administrative Office in Health (6 days ago) About East Metro Public Health District Administrative Office. Northside Hospital Gwinnett, formerly known as ...

*ECU Health Family Medicine Center*

At ECU Health Family Medicine Center, we provide primary care services for patients of all life stages, from newborn to adolescent to geriatric and everything in between.

### **6,000+ Clinical Sales Specialist jobs in United States**

Today's top 6,000+ Clinical Sales Specialist jobs in United States. Leverage your professional network, and get hired. New Clinical Sales Specialist jobs added daily.

*GEORGIA DEPARTMENT OF PUBLIC HEALTH DISTRICT HEALTH ...*

DISTRICT 3-4 / GWINNETT-LAWRENCEVILLE / East Metro Health District 2570 Riverside Parkway  
Phone No: 770-339-4260 Lawrenceville, Georgia 30046-3339 Fax No: 770-339-2334 ...

### **East Metro Health District**

discover East Metro Health District. Find articles on fitness, diet, nutrition, health news headlines, medicine, diseases

DISTRICT 3-4 / LAWRENCEVILLE / East Metro Health District

Home <?xml version="1.0" encoding="UTF-8"?> DISTRICT 3-4 / LAWRENCEVILLE / East Metro Health District PH Districts Provider Vaccine Registration

### **Eastern Band of Cherokee Indians - Public Health & Human ...**

Aug 30, 2024 · We invite you to learn about the variety of programs within Eastern Band of Cherokee Indians (EBCI) Public Health & Human Services. Our programs are designed to ...

### **Department of Public Health - [cumberlandcountync.gov](http://cumberlandcountync.gov)**

The Cumberland County Health Department is seeking input from health department clients and the community at large regarding the operating hours of the health department. Our goal is to ...

East Metro Public Health District Administrative Office

About This Service The East Metro Public Health District Administrative Office, located in Lawrenceville, GA, monitors public health risks, coordinates Lawrenceville agencies ...

*Granville Vance Public Health – Your Environment. Your ...*

GVPH and El Centro Hispano, Inc. are hosting a Spanish-speaking focus group TOMORROW, Tuesday, July 22nd from 6:30-8pm for residents of Granville and Vance to share more about ...

### **Health Department | Nash County, NC - Official Website**

Health Department Nash County Health Department (NCHD) provides a variety of public health services to keep our residents and community healthy. Services are available to all individuals ...

### **Lawrenceville GA, Public Health Departments**

East Metro Health District Nearby Public Health Departments Due to the limited amount of locations in Lawrenceville we have expanded our search to show you more listings in the ...

### **Public Health - Lee County, North Carolina**

Jun 18, 2025 · The Lee County Health Department is committed to providing an inclusive, respectful, and welcoming environment for all members of the community, clients, employees, ...

*Metro Public Health Department - Nashville.gov*

The Metro Public Health Department is distributing gun locks to the community. They are available at our Lentz, East, Woodbine and South Nutrition Center locations.

Explore the rise of Johny Goodbije and his gangsters in Chicago. Uncover their influence on the city's crime landscape. Learn more about this notorious figure!

[Back to Home](#)