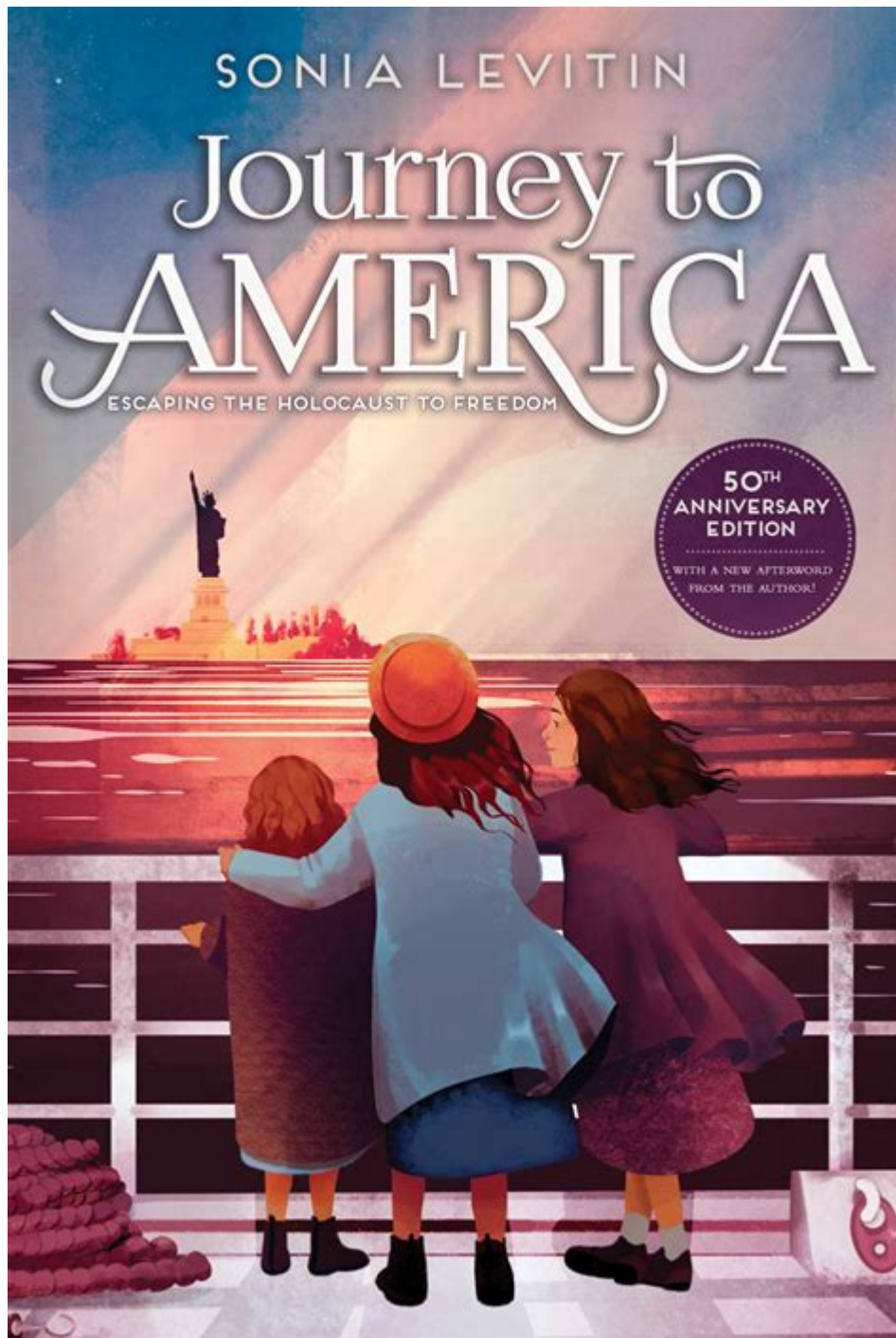


Journey To America By Sonia Levitin



Journey to America by Sonia Levitin is a poignant historical novel that captures the trials and tribulations of Jewish immigrants during the early 20th century. The story revolves around the experiences of a young girl named Anna, who embarks on a perilous journey from her homeland to America in search of a better life. Through her eyes, readers gain insight into the harsh realities of immigration, the hope for a brighter future, and the enduring spirit of those who faced adversity. This article delves into the key themes, characters, and historical context of Levitin's work, highlighting its significance in understanding the immigrant experience.

Historical Context

The backdrop of "Journey to America" is set against the turbulent history of Eastern Europe during the early 1900s. This period was marked by:

- **Persecution:** Many Jews faced widespread discrimination, pogroms, and violence in countries such as Russia and Poland. The rise of anti-Semitism significantly impacted Jewish communities, prompting many to seek refuge elsewhere.
- **Economic Hardship:** The economic situation in Eastern Europe was dire, with limited opportunities for work and advancement. Many families struggled to make ends meet, leading to widespread poverty.
- **Immigration Waves:** The late 19th and early 20th centuries saw a massive influx of immigrants to the United States, particularly from Europe. Ellis Island became a symbol of hope and new beginnings for millions seeking a better life.

Understanding this historical context is crucial for appreciating the depth of Anna's journey and the challenges she faces along the way.

Plot Summary

The narrative follows Anna, a young Jewish girl, as she navigates the complexities of leaving her homeland in pursuit of a better life in America. The story unfolds in several key phases:

Life in the Homeland

Anna's life in Eastern Europe is characterized by:

- **Family Bonds:** The love and support of her family serve as a source of strength amid the turmoil.
- **Cultural Heritage:** The rich traditions and customs of her Jewish faith provide comfort and a sense of identity.
- **The Decision to Leave:** As conditions worsen, Anna's family makes the heart-wrenching decision to emigrate, driven by the hope of finding safety and opportunity in America.

The Journey Begins

The journey to America is fraught with challenges. Anna's experiences during this phase include:

- **Traveling Conditions:** The journey involves long, arduous travel by train and ship, often in overcrowded and unsanitary conditions.
- **Fear and Uncertainty:** Anna grapples with fear of the unknown, worrying about what awaits her family in a foreign land.
- **Loss and Sacrifice:** Along the way, Anna faces the pain of leaving behind loved ones and familiar places, highlighting the sacrifices many immigrants made.

Arrival in America

Upon arriving in America, Anna's family encounters a new set of challenges:

- Ellis Island: The processing center for immigrants symbolizes hope, but it also represents anxiety as families undergo inspections and questioning.
- Cultural Shock: Anna experiences a stark contrast between her homeland and her new environment, from language barriers to different customs and norms.
- Pursuit of the American Dream: With determination, Anna and her family strive to settle into their new lives, seeking work and building a future despite the obstacles they face.

Thematic Exploration

Levitin's "Journey to America" explores several significant themes that resonate throughout the narrative:

Identity and Belonging

The quest for identity is a central theme in the novel. Anna struggles to balance her cultural heritage with the desire to assimilate into American society. This theme is reflected in various ways:

- Cultural Conflicts: Anna often feels torn between her family's traditions and the new American culture she encounters.
- Search for Home: The concept of home evolves for Anna; it transforms from a physical place to a sense of belonging and acceptance in a new land.

Resilience and Hope

Anna's journey is emblematic of the resilience displayed by immigrants. Despite the numerous challenges she faces, her spirit remains unbroken:

- Determination: Anna's unwavering determination to succeed serves as an inspiration, showcasing the tenacity of many immigrants.
- Hope for the Future: The novel underscores the importance of hope, illustrating how it fuels Anna's journey and motivates her to overcome obstacles.

Family and Community

The significance of family and community is a recurring motif in the story:

- Support Systems: Anna's family plays a crucial role in her journey, providing emotional support and encouragement.
- Building New Communities: As immigrants settle into America, they often rely on the support of fellow immigrants, creating tight-knit communities that offer comfort and solidarity.

Character Analysis

Sonia Levitin crafts a rich tapestry of characters that enhance the emotional depth of the story. Key characters include:

Anna

- Protagonist: Anna is a relatable and resilient character, embodying the hopes and fears of countless immigrants. Her growth throughout the story reflects the broader immigrant experience.
- Symbol of Hope: Anna represents the hope for a better future, illustrating the transformative power of dreams and aspirations.

Anna's Family

- Parental Figures: Anna's parents are depicted as loving yet burdened by the weight of their circumstances. Their sacrifices and struggles highlight the challenges faced by immigrant families.
- Siblings: Anna's relationship with her siblings adds depth to the family dynamic, showcasing the bonds that hold them together during difficult times.

Conclusion

"Journey to America" by Sonia Levitin is a powerful narrative that encapsulates the immigrant experience through the lens of a young girl's journey. Through Anna's story, readers are invited to reflect on the themes of identity, resilience, and the enduring hope that drives individuals to seek a better life. The novel serves as a reminder of the rich tapestry of immigrant stories that have shaped America, emphasizing the importance of understanding and empathizing with those who undertake similar journeys in search of belonging and opportunity. Levitin's work ultimately stands as a tribute to the human spirit and the quest for a brighter tomorrow.

Frequently Asked Questions

What is the central theme of 'Journey to America' by Sonia Levitin?

The central theme of 'Journey to America' is the pursuit of freedom and the immigrant experience, highlighting the challenges and hopes of a Jewish family escaping persecution in Europe for a better life in America.

How does Sonia Levitin portray the struggles faced by the characters in 'Journey to America'?

Sonia Levitin portrays the struggles of the characters through vivid descriptions of their hardships, emotional turmoil, and the societal obstacles they encounter during their journey, emphasizing their resilience

and determination.

What historical context is provided in 'Journey to America'?

The historical context in 'Journey to America' includes the rise of anti-Semitism in Europe before World War II, which prompts the family's decision to flee to America, providing readers with insight into the socio-political climate of that era.

What can readers learn about the immigrant experience from 'Journey to America'?

Readers can learn about the complexities of the immigrant experience, including the emotional and physical challenges of migration, the longing for belonging, and the hope for a new beginning in a foreign land.

How does the author use symbolism in 'Journey to America'?

The author uses symbolism, such as the journey itself representing hope and freedom, and various objects that hold cultural significance for the characters, to deepen the narrative and connect readers to the characters' personal histories.

What age group is 'Journey to America' by Sonia Levitin targeted towards?

'Journey to America' is primarily targeted towards middle-grade readers, but its themes and storytelling can resonate with audiences of all ages interested in historical fiction and immigrant narratives.

Find other PDF article:

<https://soc.up.edu.ph/37-lead/Book?dataid=EGp02-9596&title=like-water-for-chocolate-spanish.pdf>

Journey To America By Sonia Levitin

STAR WARS™ | Kith RETURN OF THE JEDI™ Anniversary Collection | Kith

Kith and STAR WARS™ join forces once again to honor the 40th anniversary of RETURN OF THE JEDI™, creating a special collection of adults and kids' apparel, along with commemorative ...

The Kith x Star Wars: Return of the Jedi Collection Releases May 4th

Apr 26, 2023 · This collaboration follows Kith's 2021 co-branded capsule, which depicted scenes and motifs from Star Wars: A New Hope. As 2023 marks the 40th anniversary of the final film in ...

Kith Partners With Star Wars on Latest Collaboration - WWD

Dec 17, 2021 · Kith Partners With Star Wars on Latest Collaboration The collection for men and kids launches Monday.

Kith x Star Wars: Return of the Jedi Collection Celebrates 40th ...

Kith, the popular streetwear brand founded by Ronnie Fieg, has announced its latest collaboration with Star Wars to celebrate the 40th anniversary of Return of the Jedi. The collection features ...

KITH ANNOUNCES NEW STAR WARS COLLECTION ...

May 4, 2023 · Archival illustrations, graphics and movie posters were reimaged through Kith's lens to create a range of designs with premium execution. Standouts in the collection include the ...

Kith And 'Star Wars' Collaborate On 'Return Of The Jedi' ...

May 3, 2023 · Kith, the luxury brand known for its collaborations, has teamed up with Lucasfilm to launch a Star Wars-inspired collection to celebrate the 40th anniversary of Star Wars: Return of ...

STAR WARS™ | Kith

Apr 27, 2023 · STAR WARS™ | Kith April 27, 2023 We have worked with STAR WARS™ to create a collection inspired by STAR WARS: RETURN OF THE JEDI to celebrate the iconic film's 40th ...

KITH x Star Wars Collab Collection: Release Date, Lookbook

Dec 18, 2021 · KITH's Star Wars collab launched with an orchestra performing the film's inimitable theme song, now it reveals the lookbook: here's the release date.

Kith Announces New STAR WARS Collection Celebrating 40th ...

The collection will launch on Star Wars Day, May the 4 th, at Kith shops globally and on Kith.com. On May 3 rd, Kith will host a collection first-look and theater take-over in New York City. Archival ...

Take A Look At The Kith x Star Wars Collection - V Magazine

For all you Star Wars fans, this collection is for you. In partnership with Lucasfilm, Kith has released a new collection inspired by the legendary franchise. This collection not only features a wide ...

Mapa Interativo Distrital - Portal Institucional

Mar 8, 2023 · Desenvolvido pela CIMAC, com o apoio e participação dos municípios do distrito de Évora, o Portal caminhos de Évora é um serviço webgis que oferece informação territorial ...

Évora - Mapa - Distrito de Évora, Portugal

Descubra locais selecionados pelo seu caráter único e encanto duradouro. Évora é uma cidade de Portugal, capital do Distrito de Évora. Évora merece uma visita apaixonada e oferece ...

caminhosdeévora | o distrito em mapas

Estes pontos indicam locais de interesse levantados em todo o Distrito de Évora, divididos por categorias. Pode ver os Pontos de Interesse que lhe interessa, e pode também pesquisá-los e ...

Mapas Evora, Portugal - Municipios e Distâncias

Mapas e planos de Evora, Portugal, com informação de ruas e distâncias de rotas, estradas, mapas satelitais e lugares para viajar a Evora.

Mapa do Distrito de Evora Portugal

Mapa do distrito de Evora mostra todas as cidades, capital e linhas de fronteira etc.

Mapa turístico de Évora - 2025 - Dica de Portugal

Veja como é o mapa turístico de Évora, e comece a planejar sua viagem sabendo quais as principais regiões e pontos turísticos da capital do Alentejo

Distrito de Évora municípios e freguesias

Quantos municípios e freguesias tem o distrito de Évora tem 14 municípios e tem 69 freguesias Onde fica o distrito de Évora [mapa](#)

Município de Évora: Mapas Interativo Distrital de Évora - Geoportais

Pode CLICAR AQUI para apoiar este projeto com um donativo. Obrigado!

Distrito de Évora - Wikipédia, a enciclopédia livre

O distrito de Évora é um distrito português, localizado no sudeste do país. Limita a norte com o distrito de Portalegre, a leste com a Espanha, a sul com o distrito de Beja, a oeste com o ...

Mapas de Évora - Portugal | MapasBlog

Évora é uma cidade portuguesa, capital do Distrito de Évora, e da região do Alentejo e sub-região do Alentejo Central, com uma população de 49 252 habitantes (2011).

Discover the inspiring "Journey to America" by Sonia Levitin. Explore themes of hope and resilience. Learn more about this captivating tale today!

[Back to Home](#)