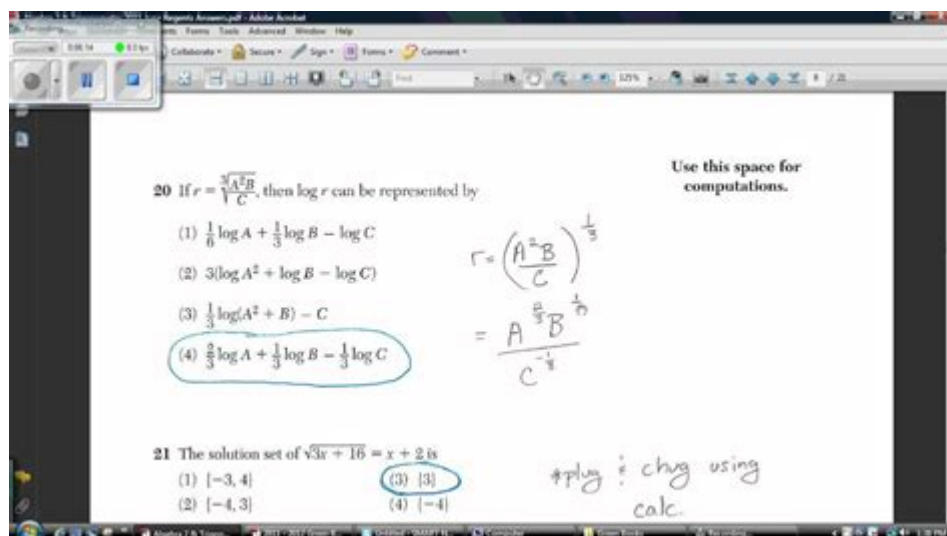


# June 2012 Algebra Regents Answers



**June 2012 Algebra Regents Answers** represent a crucial aspect of evaluating student performance in mathematics, particularly for those in New York State. The Algebra Regents exam is a standardized test that assesses students' understanding of algebra concepts and their ability to apply these concepts to solve problems. This article will provide an overview of the June 2012 Algebra Regents exam, discuss its significance, offer insights into the structure and content of the exam, and explore the answers and solutions to key questions.

## Understanding the Algebra Regents Exam

The Algebra Regents exam is part of the New York State Regents Examinations, a series of standardized tests designed to evaluate high school students' academic achievements. Specifically, the Algebra exam focuses on topics such as:

- Linear equations and inequalities
- Functions and their properties
- Polynomials and factoring
- Quadratic equations
- Data analysis and statistics

The exam is typically administered to students at the end of their Algebra I course, and passing it is often a requirement for graduation.

# Structure of the June 2012 Algebra Regents Exam

The June 2012 Algebra Regents exam consisted of multiple-choice questions, short answer questions, and extended response questions. The test was designed to assess not only students' computational skills but also their problem-solving abilities and conceptual understanding.

1. Multiple-Choice Questions: These questions tested students' knowledge of various algebra topics and often included real-world applications.
2. Short Answer Questions: Students were required to show their work and provide brief explanations for their answers.
3. Extended Response Questions: These questions asked students to solve complex problems, requiring a deeper understanding of algebraic concepts.

## Significance of the June 2012 Exam

The June 2012 Algebra Regents exam holds particular significance for several reasons:

- Graduation Requirements: In New York State, passing the Algebra Regents exam is essential for high school graduation. It reflects a student's readiness for college-level coursework and life beyond high school.
- Curriculum Alignment: The exam is closely aligned with the New York State Mathematics Curriculum, ensuring that it assesses the knowledge and skills that students are expected to learn throughout their algebra course.
- Student Performance Analysis: Results from the exam provide valuable data for educators, helping them identify areas where students excel or struggle, leading to more targeted instruction.

## Key Topics Covered in the June 2012 Exam

The June 2012 Algebra Regents exam covered various topics that are fundamental to understanding algebra. The following key areas were emphasized:

- Linear Functions: Students were required to interpret graphs, write equations in slope-intercept form, and solve linear equations.
- Quadratic Functions: The exam included questions on factoring quadratic equations, finding roots using the quadratic formula, and graphing parabolas.
- Systems of Equations: Students needed to solve systems of linear equations using various methods, including substitution and elimination.
- Statistics and Probability: The exam assessed students' ability to analyze data sets and make inferences based on statistical measures.

# June 2012 Algebra Regents Answers

Accessing the answers to the June 2012 Algebra Regents exam is crucial for students who want to review their performance or prepare for future exams. Below is a summary of answers to some of the key questions on the exam, categorized by question type.

## Multiple-Choice Answers

The multiple-choice section of the exam consisted of various algebraic problems. Here are some of the answers from this section:

1. Question 1: A linear equation problem.  
- Answer: C
2. Question 2: A question about quadratic functions.  
- Answer: A
3. Question 3: A system of equations problem.  
- Answer: D
4. Question 4: A statistics question.  
- Answer: B

## Short Answer Solutions

For the short answer questions, students were required to show their work clearly. Here are examples of how to approach some of these questions:

- Question Example: Solve the equation  $2x + 3 = 11$ .  
- Solution:
  1. Subtract 3 from both sides:  $2x = 8$ .
  2. Divide by 2:  $x = 4$ .
- Question Example: Factor the quadratic  $x^2 - 5x + 6$ .  
- Solution:  $(x - 2)(x - 3)$ .

## Extended Response Solutions

The extended response questions required detailed explanations and multiple steps. Here's an example:

- Question Example: A word problem involving a quadratic function.  
- Solution:
  1. Define variables and write the quadratic equation based on the problem context.
  2. Use the quadratic formula to find the roots.
  3. Interpret the results in the context of the problem.

# Preparing for Future Exams

For students preparing for future Algebra Regents exams, understanding the structure and content of previous exams, such as the June 2012 exam, can be incredibly beneficial. Here are some strategies for effective preparation:

1. Review Past Exams: Regularly practice with past exams to familiarize yourself with the types of questions asked.
2. Focus on Weak Areas: Identify specific topics where you struggle and dedicate more time to mastering them.
3. Utilize Study Resources: Use textbooks, online tutorials, and study groups to reinforce your understanding.
4. Practice Problem-Solving: Develop problem-solving skills by working on a variety of algebra problems, especially those that require showing work.

## Conclusion

The June 2012 Algebra Regents answers not only provide insights into the exam content but also serve as a valuable resource for students aiming to achieve academic success in mathematics. By understanding the exam structure, focusing on key algebraic concepts, and practicing through past exams, students can enhance their skills and improve their performance on future assessments. The Algebra Regents exam remains a pivotal component of the educational journey for many students in New York, shaping their mathematical understanding and paving the way for future academic endeavors.

## Frequently Asked Questions

### What topics were covered in the June 2012 Algebra Regents exam?

The June 2012 Algebra Regents exam covered topics such as linear equations, quadratic functions, inequalities, polynomials, and data analysis.

### Where can I find the official answers for the June 2012 Algebra Regents exam?

Official answers for the June 2012 Algebra Regents exam can be found on the New York State Education Department's website or through educational resources that provide past exam solutions.

### How is the scoring for the June 2012 Algebra Regents exam structured?

The June 2012 Algebra Regents exam is scored on a scale from 0 to 100, with a passing score typically set at 65. The exam includes multiple-choice and constructed-response questions.

## **What are some common mistakes students make on the June 2012 Algebra Regents exam?**

Common mistakes include miscalculating during algebraic manipulations, failing to clearly show work for constructed-response questions, and misunderstanding the question prompts.

## **Are there any study guides specifically for the June 2012 Algebra Regents exam?**

Yes, there are numerous study guides and review books available that focus on the content and format of the June 2012 Algebra Regents exam, including practice problems and solutions.

## **What is the format of the June 2012 Algebra Regents exam?**

The exam consists of multiple-choice questions, short answer questions, and extended response questions that require detailed solutions.

## **Can I retake the June 2012 Algebra Regents exam if I did not pass?**

Yes, students can retake the Algebra Regents exam in subsequent testing periods if they do not achieve a passing score.

## **What resources are available for preparing for the Algebra Regents exams?**

Resources include online practice tests, tutoring services, review books, and study groups that focus on algebra concepts and past Regents exams.

## **How do the June 2012 Algebra Regents answers compare to other years?**

While the core concepts remain similar across years, the specific questions and answer keys can vary. It's important to review past exams for trends in question types.

## **What calculator is recommended for the June 2012 Algebra Regents exam?**

Students are typically allowed to use scientific or graphing calculators on the June 2012 Algebra Regents exam, with the TI-84 series being a popular choice.

Find other PDF article:

<https://soc.up.edu.ph/41-buzz/pdf?dataid=VBF16-3569&title=michigan-physical-therapy-ceu-requirements.pdf>

# June 2012 Algebra Regents Answers

**june** -

june January ...

-

January February March April May? June July ...

-

1. January Jan 2. February Feb 3. March Mar 4. April Apr 5. ...

1~12\_

1~12 1 Jan. January 2 Feb. February 3 Mar. March 4 Apr. April 5 ...

**sep** -

Aug 22, 2024 · "Sep" "Sept" ...

**june** -

june January Jan February Feb March Mar April Apr May June Jun. July Jul August Aug September Sep/Sept October ...

-

January February March April May? June July August September October November December ...

-

1. January Jan 2. February Feb 3. March Mar 4. April Apr 5. May May 6. June Jun 7. July Jul 8. August Aug 9. September Sep 10. October Oct 11. November Nov 12. December Dec

1~12\_

1~12 1 Jan. January 2 Feb. February 3 Mar. March 4 Apr. April 5 May 6 Jun. June 7 Jul. July 8 Aug. August 9 Sep. September 10 Oct. October 11 Nov. November 12 Dec. December ...

**sep** -

Aug 22, 2024 · "Sep" "Sept" (January) - Jan (February) - Feb (March) - Mar (April) - Apr (May) - May (June) - Jun (July) - Jul (August) - Aug (September) - Sep/Sept (October) - Oct (November) - Nov ...

Jun. Jul. Sep. June July ...

Jun June Jul July Sept September 1 Jan. January 2 Feb. February 3 Mar. March 4 Apr. April 5 May. May 6 Jun. June 7 Jul. July 8 Aug. August 9 Sept. September 10 Oct. October 11 Nov. November 12 Dec. December 1 January ...

-

January February March April May June July August

SeptemberOctoberNovemberDecember 1  
...

## dec -

decDecember“Dec.”“DEC.” ~ 1 JAN.  
Jan.=January 2 FEB. Feb.=February 3 MAR. Mar.=March 4 APR. Apr.=April 5  
MAY. May=May 6 JUN. Jun.=June 7 JUL. Jul.=July 8 AUG. Aug.=August 9 ...

## Jun\_

6:June ;Junius;JunoJuno 6  
30;30 6:

1st2nd3rd...10th 10th ...

Please give me a second chance. 4“”the He was born on June 6th,  
1974. 197466 5 the Who got there second?

Find the June 2012 Algebra Regents answers you need! Access solutions

[Back to Home](#)