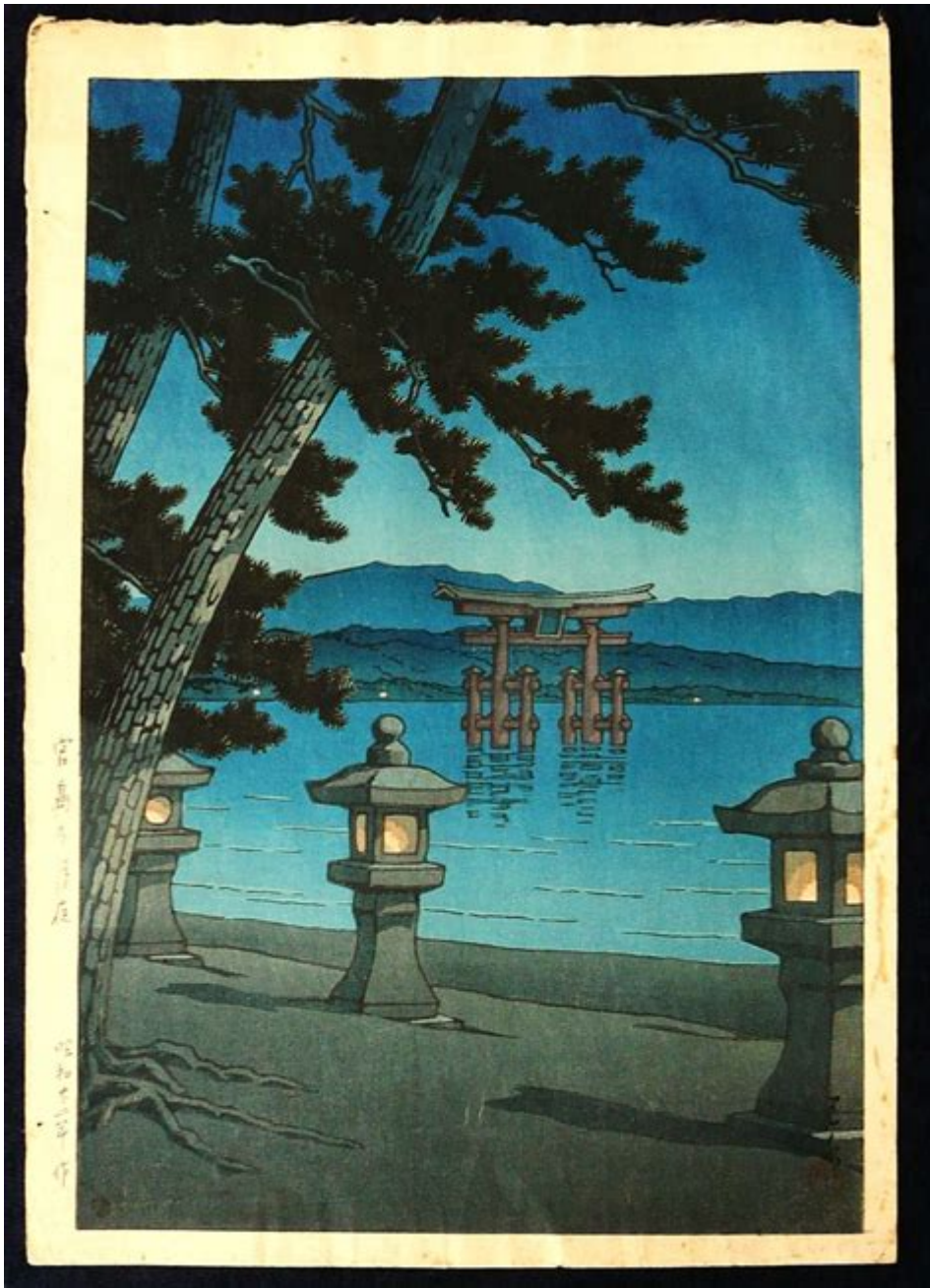


Kawase Hasui The Complete Woodblock Prints



Kawase Hasui the complete woodblock prints represent a significant contribution to the genre of ukiyo-e, or "pictures of the floating world." This art form flourished in Japan during the Edo period, and Hasui's work is celebrated for its exquisite beauty and technical mastery. As a leading figure of the shin-hanga movement in the early 20th century, Hasui's woodblock prints capture the serene landscapes, charming rural scenes, and the ephemeral qualities of nature. This article delves into the life of Kawase Hasui, his artistic style, notable works, and the legacy of his complete woodblock prints.

Kawase Hasui: A Brief Biography

Kawase Hasui was born on May 18, 1883, in the city of Suginami, Tokyo. His early interest in art led him to study under the famous ukiyo-e artist, Kaburagi Kiyokata. Initially focusing on traditional Japanese painting, Hasui later transitioned to woodblock printing, where he would make his most significant impact.

By the 1910s, Hasui began to develop his unique style, merging traditional techniques with modern sensibilities. His works often depict tranquil landscapes imbued with a sense of nostalgia and longing, reflecting the changing times of Japan during the Meiji and Taisho eras. His art captures not just the physical beauty of Japan but also its cultural essence, making it timeless and universally appealing.

The Artistic Style of Kawase Hasui

Kawase Hasui's woodblock prints are characterized by several distinctive features:

1. Use of Color

Hasui employed a vibrant yet delicate color palette, often using transparent layers of pigment to create depth and luminosity. This technique allows for a rich interplay of light and shadow, enhancing the emotional impact of his scenes.

2. Attention to Detail

His meticulous attention to detail is evident in the natural elements of his prints, from the intricate patterns of leaves to the gentle ripples of water. This attention to detail is complemented by a deep understanding of perspective, often leading the viewer's eye through the composition.

3. Themes of Nature and Seasons

Nature is a central theme in Hasui's work. He frequently depicted seasonal changes, capturing the fleeting beauty of cherry blossoms in spring, the vibrant hues of autumn leaves, and serene snowy landscapes during winter. Each print serves as a meditation on the transience of beauty and the passage of time.

4. Integration of Traditional and Modern Elements

Hasui's art bridges traditional Japanese aesthetics with contemporary influences. His compositions often reflect Western artistic influences while retaining the essence of Japanese culture, making his work accessible to a global audience.

Notable Works of Kawase Hasui

Kawase Hasui produced an extensive body of work throughout his career. Some of his most notable woodblock prints include:

- **Snow at Takebashi** (1924) - This print captures an ethereal winter scene of snow-covered rooftops and trees, exuding a sense of quiet solitude.
- **Evening at Nihonbashi** (1929) - A beautiful depiction of the Nihonbashi bridge at dusk, showcasing the interplay of light on water amidst the bustling city.
- **Shinagawa Station** (1929) - This print reflects the fusion of modernity and tradition, portraying the busy station with a backdrop of traditional buildings.
- **Violet Wisteria at Kameido** (1921) - Celebrated for its vibrant colors, this piece illustrates the beauty of wisteria in full bloom, capturing the essence of spring.
- **Night Rain at Kiyomizu Temple** (1930) - This work depicts the temple illuminated by soft light amidst a gentle rain, evoking a serene and reflective atmosphere.

Each of these prints exemplifies Hasui's exceptional skill and his ability to evoke emotion through landscape and nature.

The Legacy of Kawase Hasui

Kawase Hasui's impact on the world of art extends beyond his lifetime. His work not only contributed to the revival of ukiyo-e in the 20th century but also influenced the shin-hanga movement, which sought to blend traditional Japanese woodblock techniques with Western artistic themes.

1. Influence on Modern Art

Artists around the world have drawn inspiration from Hasui's unique approach to composition and color. His ability to capture the essence of a moment has made his work relevant to contemporary artists seeking to explore themes of nature and tranquility.

2. Preservation of Cultural Heritage

Hasui's prints serve as a visual documentation of Japan's landscapes and cultural heritage during a time of rapid modernization. They provide insight into the beauty of Japan's natural world and its cultural landmarks, preserving them for future generations to appreciate.

3. Popularity Among Collectors

Today, Kawase Hasui's woodblock prints are highly sought after by collectors and art enthusiasts alike. Original prints can command high prices at auctions, and they are featured in museum collections worldwide. His work continues to be celebrated in exhibitions, further solidifying his reputation as one of the masters of ukiyo-e.

Conclusion

Kawase Hasui's complete woodblock prints offer a window into the beauty of Japan's landscapes and the delicate interplay of nature and emotion. His mastery of color, detail, and composition continues to resonate with art lovers today. As we explore the world through Hasui's eyes, we are reminded of the transient beauty of the world around us and the importance of preserving cultural heritage through art. For those interested in exploring or collecting woodblock prints, Kawase Hasui's work is not just a collection of images but a profound journey into the heart of Japan's artistic legacy.

Frequently Asked Questions

Who is Kawase Hasui and why is he significant in the world of woodblock prints?

Kawase Hasui was a Japanese artist known for his stunning landscape woodblock prints, particularly during the early 20th century. He played a crucial role in the Shin-hanga movement, which sought to blend traditional ukiyo-e techniques with Western artistic influences.

What are some common themes found in Kawase Hasui's woodblock prints?

Common themes in Hasui's works include serene landscapes, seasonal changes, and depictions of rural life. He often captured the beauty of nature, including mountains, rivers, and traditional architecture.

How did Kawase Hasui's style differ from that of earlier ukiyo-e artists?

Unlike earlier ukiyo-e artists who often focused on urban life and entertainment, Hasui's style emphasized natural beauty and tranquility. His prints often feature soft colors and subtle gradations, reflecting a more modern aesthetic.

What techniques did Kawase Hasui use in his woodblock printmaking?

Hasui employed traditional woodblock printing techniques, including multi-block printing and careful color layering. He was known for his attention to detail and use of rich, vibrant colors to enhance the atmospheric qualities of his landscapes.

What impact did Kawase Hasui have on contemporary art and artists?

Kawase Hasui's work has inspired many contemporary artists, particularly those interested in printmaking. His ability to fuse traditional techniques with modern themes has made him a pivotal figure in the revival of interest in Japanese woodblock prints.

Where can one find collections or exhibitions of Kawase Hasui's prints?

Collections of Kawase Hasui's prints can be found in various museums worldwide, including the Tokyo National Museum and the Art Institute of Chicago. Many galleries also host special exhibitions showcasing his work.

What is the significance of the book 'Kawase Hasui: The Complete Woodblock Prints'?

The book 'Kawase Hasui: The Complete Woodblock Prints' serves as a comprehensive catalog of his works, showcasing the full range of his artistic output. It provides valuable insights into his techniques, themes, and the historical context of his art.

How has digital technology influenced the preservation and appreciation of Kawase Hasui's woodblock prints?

Digital technology has allowed for the preservation and wider dissemination of Kawase Hasui's woodblock prints through high-resolution reproductions, online exhibitions, and virtual galleries, making his work accessible to a global audience.

Find other PDF article:

<https://soc.up.edu.ph/01-text/files?ID=Sip23-5093&title=2001-yamaha-big-bear-400-repair-manual.pdf>

Kawase Hasui The Complete Woodblock Prints

QUERY | English meaning - Cambridge Dictionary

QUERY definition: 1. a question, often expressing doubt about something or looking for an answer from an authority.... Learn more.

QUERY - norsk oversettelse - bab.la engelsk-norsk ordbok

Finn alle oversettelser av query i norsk som spørsmål, forespørsel og mange andre.

QUERY Definition & Meaning - Merriam-Webster

The meaning of QUERY is question, inquiry. How to use query in a sentence. Synonym Discussion of Query.

QUERY Definition & Meaning | Dictionary.com

Query definition: a question; an inquiry.. See examples of QUERY used in a sentence.

QUERY - Definition & Translations | Collins English Dictionary

Discover everything about the word "QUERY" in English: meanings, translations, synonyms, pronunciations, examples, and grammar insights - all in one comprehensive guide.

query noun - Definition, pictures, pronunciation and usage notes ...

Definition of query noun in Oxford Advanced Learner's Dictionary. Meaning, pronunciation, picture, example sentences, grammar, usage notes, synonyms and more.

query - Wiktionary, the free dictionary

Jun 25, 2025 · query (plural queries) A question, an inquiry (US), an enquiry (UK). The teacher answered the student's query concerning biosynthesis.

Query - Wikipedia

Query, a precise request for information retrieval made to a database, data structure or information system Query language, a computer language used to make queries into ...

Query - definition of query by The Free Dictionary

query , inquiry, enquiry - A query is a single question; an inquiry (or enquiry) may be a single question or extensive investigation (i.e. a series of questions).

Query Definition & Meaning - YourDictionary

(computing, databases) A set of instructions passed to a database. The database admin switched on query logging for debugging purposes.

Southern District of California | Two CBP Officers Plead Guilty to ...

1 day ago · SAN DIEGO – U.S. Customs and Border Protection Officers Jesse Clark Garcia and Diego Bonillo have pleaded guilty to conspiring with members of a Mexican-based poly drug ...

2 customs officers plead guilty to allowing drugs to enter US ...

20 hours ago · Federal prosecutors say two Customs and Border Protection officers pleaded guilty this month to allowing vehicles filled with illegal drugs to enter the U.S. from Mexico SAN ...

2 customs officers plead guilty to allowing drugs into U.S., ...

13 hours ago · Two Customs and Border Protection officers have pleaded guilty to allowing drugs to enter the U.S. through their inspection lanes, authorities said.

Two CBP officers plead guilty to allowing drugs to cross at San ...

4 hours ago · SAN DIEGO — Two U.S. Customs and Border Protection officers have pleaded guilty to federal drug trafficking charges after admitting they allowed vehicles loaded with ...

Two U.S. Customs officers plead guilty to smuggling drugs ...

11 hours ago · Two U.S. Customs and Border Protection officers have pleaded guilty to charges of allowing drug-laden vehicles to enter the United States from Mexico, according to the U.S. ...

Guilty Pleas Unmask CBP Officers as Drug Trafficking Accomplices

12 hours ago · Two CBP officers pled guilty to drug trafficking conspiracy, assisting a Mexican cartel by signaling when to safely pass drugs through U.S. border checks.

Second CBP officer pleads guilty in drug-importation scheme

14 hours ago · A San Diego-based U.S. Customs and Border Protection officer pleaded guilty Monday to federal drug importation charges for allowing vehicles containing drugs to pass ...

2 customs officers plead guilty to allowing drugs to enter the US ...

SAN DIEGO (AP) — Two Customs and Border Protection officers pleaded guilty this month to allowing vehicles filled with illegal drugs to enter the U.S. from Mexico, federal prosecutors said ...

2 CBP officers plead guilty to ID fraud charge, confess to ...

Jul 17, 2025 · McALLEN, Texas (ValleyCentral) — Two federal law enforcement officers who cheated on a physical fitness test pleaded guilty to misdemeanor charges Tuesday. U.S. ...

Corrupt Customs Officers Admit Letting Drugs Sneak Past Border ...

1 day ago · Two Customs Officers Admit to Allowing Drugs Through Inspection Lanes Two former customs officers have pleaded guilty to charges related to allowing illegal drugs to pass ...

Explore the beauty of Kawase Hasui's complete woodblock prints in our detailed article. Discover how his art captures Japan's landscapes. Learn more!

[Back to Home](#)