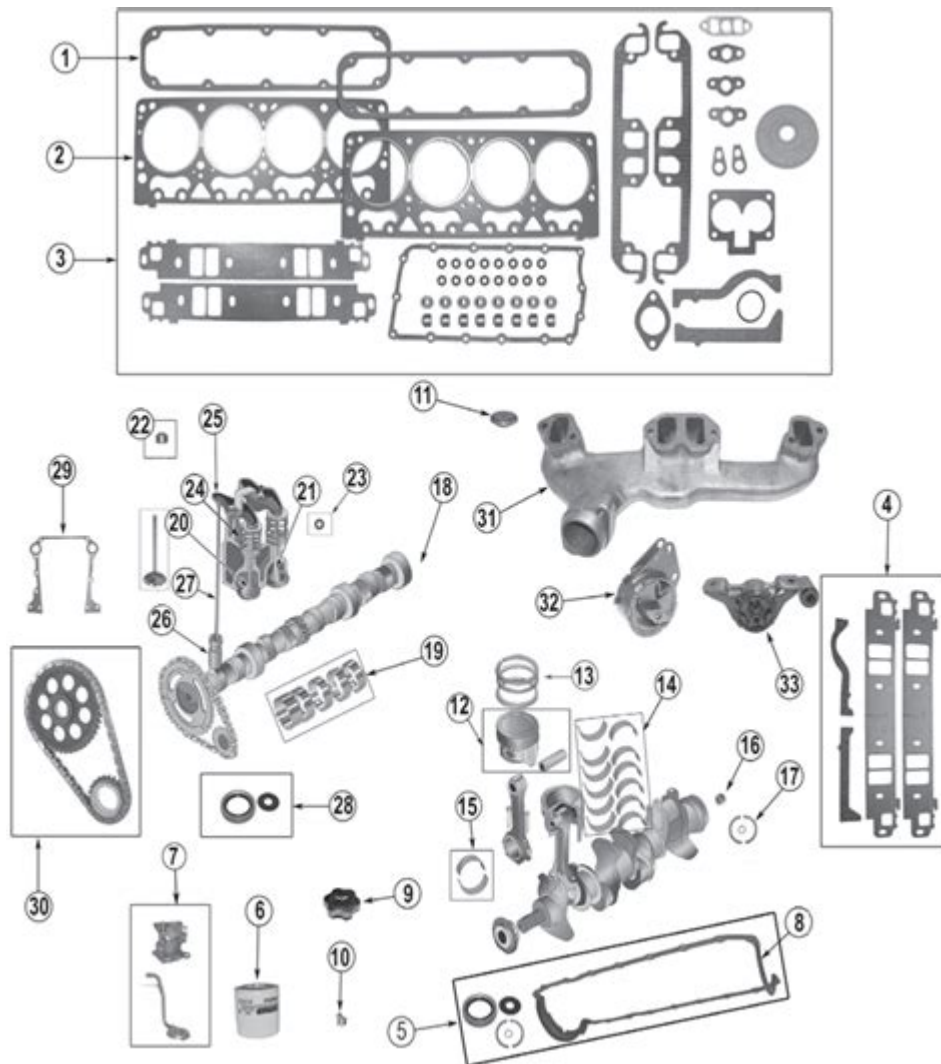


Jeep Grand Cherokee 47 Engine Diagram



Jeep Grand Cherokee 4.7 Engine Diagram is an essential component for understanding the workings of one of Jeep's most popular models. The 4.7-liter V8 engine has been a staple in the Jeep Grand Cherokee lineup, renowned for its blend of power, reliability, and off-road capability. This article will delve into the intricacies of the 4.7 engine, including its components, functions, and the importance of the engine diagram for maintenance and troubleshooting.

Overview of the Jeep Grand Cherokee 4.7 Engine

The Jeep Grand Cherokee 4.7 engine, commonly referred to as the 4.7L PowerTech V8, was

introduced in the late 1990s and continued to be a popular choice until the early 2000s. Known for its robust performance, the engine provides a balance of power and fuel efficiency, making it suitable for both on-road and off-road driving.

Specifications

Before diving into the engine diagram, it is essential to understand the specifications of the 4.7 engine:

- Displacement: 4.7 liters (287 cubic inches)
- Configuration: V8
- Bore x Stroke: 3.66 in x 3.40 in
- Compression Ratio: 9.2:1
- Horsepower: Approximately 235 hp (varies with model year and tuning)
- Torque: Approximately 295 lb-ft
- Fuel System: Multi-port fuel injection

This engine is designed with a cast aluminum alloy block and features a DOHC (dual overhead cam) setup, which helps improve airflow and performance.

Key Components of the 4.7 Engine

Understanding the engine diagram requires familiarity with its various components. Below is an overview of the key parts:

- **Engine Block:** The main structure of the engine that houses the cylinders and other internal components.
- **Cylinders:** Four cylinders where the combustion process occurs. The 4.7 engine has eight

cylinders arranged in a V-configuration.

- **Pistons:** Located inside the cylinders, pistons convert the combustion energy into mechanical energy.
- **Crankshaft:** Transforms the linear motion of the pistons into rotational motion to power the vehicle.
- **Camshaft:** Operates the intake and exhaust valves, controlling the airflow in and out of the engine.
- **Oil Pan:** Holds the engine oil, which lubricates the internal components.
- **Intake Manifold:** Distributes the air-fuel mixture to the cylinders.
- **Exhaust Manifold:** Collects exhaust gases from the cylinders and channels them to the exhaust system.
- **Timing Chain:** Synchronizes the rotation of the crankshaft and camshaft, ensuring proper timing of valve opening and closing.
- **Fuel Injectors:** Spray fuel into the intake manifold for optimal combustion.
- **Ignition System:** Ignites the air-fuel mixture in the cylinders, usually consisting of spark plugs and ignition coils.

Understanding the Engine Diagram

The engine diagram for the Jeep Grand Cherokee 4.7 is a visual representation of all the components and their relationships to one another. It's a valuable tool for both mechanics and DIY enthusiasts.

The Importance of the Engine Diagram

1. **Maintenance and Repair:** The diagram provides a roadmap for understanding how the engine operates, making it easier to diagnose issues and perform repairs.
2. **Component Identification:** Identifying each component becomes straightforward, which is especially useful during maintenance tasks or when replacing parts.
3. **Modification and Upgrades:** For those looking to upgrade or modify their engine, the diagram helps in understanding where to make changes or improvements.
4. **Educational Resource:** For those learning about automotive engineering or mechanics, the diagram serves as an educational tool to understand engine architecture and functionality.

Common Issues and Troubleshooting

Despite its reputation for reliability, the 4.7 engine can experience certain issues over time. Here are some common problems and tips for troubleshooting:

Common Problems

1. **Oil Leaks:** Often originating from the oil pan or valve cover gaskets due to wear and tear.
2. **Overheating:** Can result from a faulty thermostat, water pump, or radiator blockage.
3. **Misfiring:** Usually caused by faulty spark plugs or ignition coils.

4. **Check Engine Light:** Triggers due to various issues, including problems with the fuel system or emissions control.

Troubleshooting Steps

1. **Visual Inspection:** Start with a thorough visual inspection of the engine and surrounding components for any obvious signs of wear or damage.
2. **Check Fluids:** Ensure that engine oil, coolant, and other fluids are at appropriate levels and are not contaminated.
3. **Use Diagnostic Tools:** Utilize OBD-II scanners to retrieve error codes that can help pinpoint the issue.
4. **Listen for Unusual Sounds:** Any knocking, ticking, or grinding sounds may indicate internal problems that require immediate attention.
5. **Consult the Diagram:** Refer to the engine diagram for specific component locations and connections that may need further inspection.

Maintenance Tips for the 4.7 Engine

Regular maintenance is crucial for the longevity and performance of the Jeep Grand Cherokee 4.7 engine. Here are some essential tips:

- **Change Oil Regularly:** Follow the manufacturer's recommended oil change intervals to ensure proper lubrication and engine health.
- **Inspect Belts and Hoses:** Regularly check belts and hoses for signs of wear, cracking, or fraying.

- **Replace Spark Plugs:** Change spark plugs as recommended to maintain optimal engine performance.
- **Monitor Coolant Levels:** Keep an eye on coolant levels and check for leaks to prevent overheating.
- **Fuel System Cleaning:** Periodically clean the fuel injectors to ensure proper fuel delivery and combustion.

Conclusion

The Jeep Grand Cherokee 4.7 engine diagram serves as an invaluable resource for understanding the components and functionality of this powerful V8 engine. By familiarizing oneself with the engine's specifications, components, and common issues, Jeep owners and enthusiasts can better maintain their vehicles and ensure optimal performance. Whether for routine maintenance, troubleshooting, or performance upgrades, a solid grasp of the engine diagram equips owners with the knowledge needed to keep their Grand Cherokees running smoothly for years to come.

Frequently Asked Questions

What is the function of the 4.7 engine in the Jeep Grand Cherokee?

The 4.7 engine in the Jeep Grand Cherokee serves as a V8 engine option, providing a balance of power and efficiency for off-road and on-road driving.

Where can I find the engine diagram for the 4.7 engine in a Jeep

Grand Cherokee?

The engine diagram for the 4.7 engine can typically be found in the vehicle's service manual, online forums, or automotive repair websites.

What are common issues related to the 4.7 engine in the Jeep Grand Cherokee?

Common issues include oil leaks, overheating, and problems with the spark plugs or ignition coils.

How do I read the engine diagram for the 4.7 Jeep Grand Cherokee?

To read the engine diagram, familiarize yourself with the symbols indicating various components such as the fuel system, ignition system, and cooling system.

What components are typically included in the 4.7 engine diagram for a Jeep Grand Cherokee?

The diagram usually includes components like the intake manifold, exhaust manifold, fuel injectors, spark plugs, and various sensors.

Is the 4.7 engine diagram the same for all Jeep Grand Cherokee model years?

No, the engine diagram may vary slightly between different model years and configurations, so it's important to refer to the specific manual for your year.

How can I troubleshoot issues using the 4.7 engine diagram?

You can troubleshoot issues by locating the relevant components in the diagram, checking connections, and following the flow of systems like fuel and ignition.

Are there any aftermarket modifications available for the 4.7 engine in the Jeep Grand Cherokee?

Yes, there are various aftermarket modifications available, such as performance chips, cold air intakes, and exhaust systems that can enhance power and efficiency.

What tools do I need to work on the 4.7 engine in a Jeep Grand Cherokee?

Basic tools include a socket set, wrenches, screwdrivers, pliers, and any specialty tools required for specific components.

Can I find a digital version of the 4.7 engine diagram for the Jeep Grand Cherokee?

Yes, many automotive websites and forums offer digital versions of engine diagrams, often available for download or viewing online.

Find other PDF article:

<https://soc.up.edu.ph/23-write/files?trackid=iHW41-9881&title=free-manual-s-calculator.pdf>

[Jeep Grand Cherokee 47 Engine Diagram](#)

Why your steering wanders or seems loose. - Jeep Enthusiast Forums

Oct 6, 2023 · Why your steering wanders or seems loose One of the biggest issues with Jeeps and a topic that almost repeats itself in a new thread each week is "wandering or loose steering". As a forum contributor on JeepForum for close to 5 years now, I see it over and over. I'll first volunteer that...

Jeep Wrangler Forums

Jun 13, 2025 · The Jeep Wrangler (JL) is the fourth generation of the Wrangler off-road vehicle, available in two- and four-door bodies starting in 2017. Forum sponsored by: Quadratec

AUX Battery Location | Jeep Enthusiast Forums

Dec 5, 2024 · Here it is for anyone that stumbles onto this post: (11) Jeep Grand Cherokee Stop / Start Unavailable Service Fix Auxiliary Battery location & Replacement - YouTube EDIT: In case that

link becomes broken, it's under the front passenger seat indeed. Roll the seat all the way forward and access from the rear passenger side door. Both main and aux batteries are there. ...

Starting System Diagnostics - Jeep Enthusiast Forums

Dec 27, 2010 · Jeep Enthusiast Forums provides answers from our community and over 22 other related forums.

All Marketplace Listings - Jeep Enthusiast Forums

Jun 14, 2025 · For Sale Jeep CJ5 CJ7 CJ8 Whitco soft top frame parts & hardware, rods, plastic trim, brackets \$240.00 mattt181 Apr 28, 2025 Body & Interior Parts Anaheim, California 0 196

Anyone tow a camper with the Gladiator? - Jeep Enthusiast Forums

Dec 18, 2024 · Looking into getting a gladiator within the next 6 months or so. Mostly looking at used but who knows. May eventually want to tow a small camper less than 20 ft long. Has anyone done this? What are the real world limits a gladiator can safely tow? Thanks

YJ Wrangler Technical Forum - Jeep Enthusiast Forums

Jul 12, 2007 · Second generation of the classic Jeep - manufactured from 1987 till 1995. Known by their square headlights.

2025 Grand Cherokee - Jeep Enthusiast Forums

Jul 13, 2025 · Jeep Enthusiast Forums provides answers from our community and over 22 other related forums.

1984 Jeep CJ-7 (May Sell, No Clue On Value)

Jul 15, 2025 · 304-Powered 1984 Jeep CJ-7 Bid for the chance to own a 304-Powered 1984 Jeep CJ-7 at auction with Bring a Trailer, the home of the best vintage and classic cars online. Lot #55,174.

2024 grand cherokee intermittent issues - Jeep Enthusiast Forums

Dec 16, 2024 · Jeep Enthusiast Forums provides answers from our community and over 22 other related forums.

Why your steering wanders or seems loose. - Jeep Enthusiast ...

Oct 6, 2023 · Why your steering wanders or seems loose One of the biggest issues with Jeeps and a topic that almost repeats itself in a new thread each week is "wandering or loose steering". As a forum contributor on JeepForum for close to 5 years now, I see it over and over. I'll first volunteer that...

Jeep Wrangler Forums

Jun 13, 2025 · The Jeep Wrangler (JL) is the fourth generation of the Wrangler off-road vehicle, available in two- and four-door bodies starting in 2017. Forum sponsored by: Quadratic

AUX Battery Location | Jeep Enthusiast Forums

Dec 5, 2024 · Here it is for anyone that stumbles onto this post: (11) Jeep Grand Cherokee Stop / Start Unavailable Service Fix Auxiliary Battery location & Replacement - YouTube EDIT: In case that link becomes broken, it's under the front passenger seat indeed. Roll the seat all the way forward and access from the rear passenger side door. Both main and aux batteries are there. ...

Starting System Diagnostics - Jeep Enthusiast Forums

Dec 27, 2010 · Jeep Enthusiast Forums provides answers from our community and over 22 other related forums.

All Marketplace Listings - Jeep Enthusiast Forums

Jun 14, 2025 · For Sale Jeep CJ5 CJ7 CJ8 Whitco soft top frame parts & hardware, rods, plastic trim, brackets \$240.00 mattt181 Apr 28, 2025 Body & Interior Parts Anaheim, California 0 196

Anyone tow a camper with the Gladiator? - Jeep Enthusiast Forums

Dec 18, 2024 · Looking into getting a gladiator within the next 6 months or so. Mostly looking at used but who knows. May eventually want to tow a small camper less than 20 ft long. Has anyone done this? What are the real world limits a gladiator can safely tow? Thanks

YJ Wrangler Technical Forum - Jeep Enthusiast Forums

Jul 12, 2007 · Second generation of the classic Jeep - manufactured from 1987 till 1995. Known by their square headlights.

2025 Grand Cherokee - Jeep Enthusiast Forums

Jul 13, 2025 · Jeep Enthusiast Forums provides answers from our community and over 22 other related forums.

1984 Jeep CJ-7 (May Sell, No Clue On Value)

Jul 15, 2025 · 304-Powered 1984 Jeep CJ-7 Bid for the chance to own a 304-Powered 1984 Jeep CJ-7 at auction with Bring a Trailer, the home of the best vintage and classic cars online. Lot #55,174.

2024 grand cherokee intermittent issues - Jeep Enthusiast Forums

Dec 16, 2024 · Jeep Enthusiast Forums provides answers from our community and over 22 other related forums.

Explore our detailed guide featuring the Jeep Grand Cherokee 4.7 engine diagram. Learn how to identify components and enhance your vehicle's performance. Discover more!

[Back to Home](#)