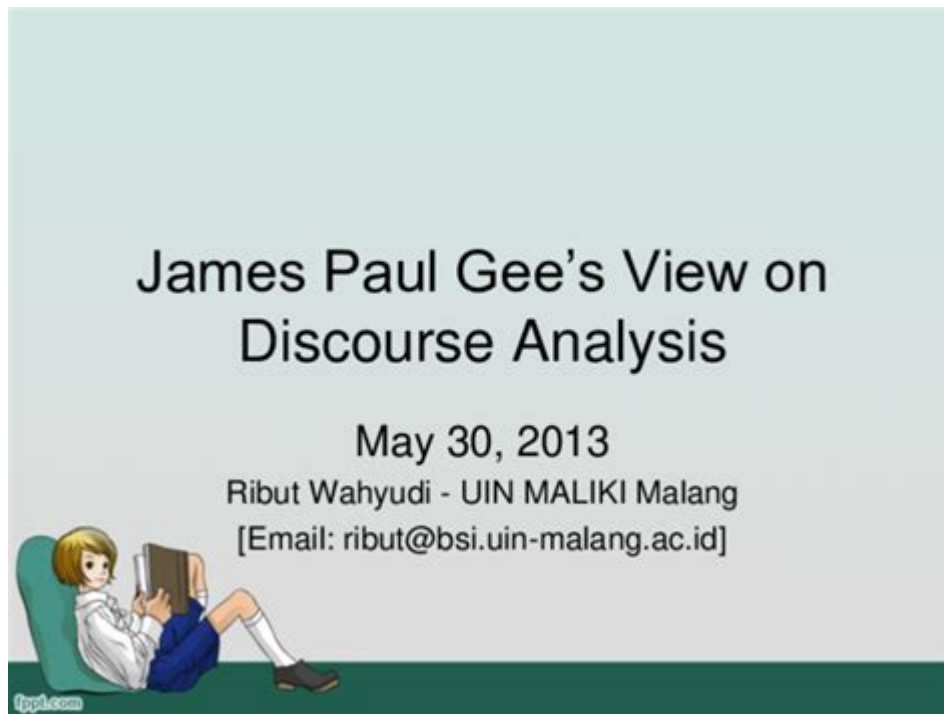


James Paul Gee Discourse Analysis



James Paul Gee discourse analysis is a significant area of study that encompasses the intersection of language, society, and identity. Developed by James Paul Gee, a prominent linguist and educational researcher, this framework provides a comprehensive approach to understanding how discourse shapes and is shaped by various social contexts. This article delves into the fundamental concepts of Gee's discourse analysis, its implications in education, and its application in real-world scenarios.

Understanding Discourse: The Foundations of Gee's Analysis

At its core, discourse analysis involves examining language use in social contexts. Gee's approach is particularly interested in how language functions not just as a tool for communication, but as a means of constructing identities and social relationships. Several key concepts underpin his analysis:

1. Discourses and Discursive Practices

Gee differentiates between "discourse" and "Discourse" (with a capital "D"). Here's how these terms are defined:

- Discourse (lowercase d) refers to language in use, which includes spoken, written, or signed communication.
- Discourse (uppercase D) encompasses larger social practices that involve not just language but also the social identities and cultural contexts associated with that language.

Gee argues that individuals engage in various discourses throughout their lives, which shape their identities and influence how they are perceived by others.

2. The Four Areas of Discourse Analysis

Gee's discourse analysis is structured around four key areas:

1. **Situational Context:** The immediate context in which discourse occurs. This includes the setting, participants, and purpose of communication.
2. **Institutional Context:** The broader social structures and institutions that influence discourse. For example, schools, workplaces, and cultural organizations create norms around how language is used.
3. **Cultural Context:** The shared beliefs, values, and practices that inform how individuals communicate within specific communities.
4. **Linguistic Context:** The specific linguistic features of the discourse, such as vocabulary, grammar, and style.

By analyzing these areas, researchers can uncover how power dynamics, social identities, and cultural narratives are constructed through language.

The Role of Identity in Discourse Analysis

One of the central themes in Gee's work is the relationship between discourse and identity. He posits that language is not merely a reflection of identity but a critical tool for its construction. Through discourse, individuals perform and negotiate their identities in various social contexts.

1. Identity as a Social Construct

Gee emphasizes that identities are not fixed; rather, they are constructed through social interactions. This perspective leads to several important insights:

- **Multiplicity of Identities:** Individuals often inhabit multiple identities simultaneously based on context. For example, a person may be a student, a parent, and a professional, each identity activated in different discursive settings.
- **Identity Performance:** Language use is a performative act; individuals use specific styles, vocabularies, and grammatical structures to signal their identities. This performance can either reinforce or challenge societal norms.

2. The Impact of Power Dynamics

Discourse analysis also sheds light on how power dynamics manifest in language use. Gee asserts that those in positions of power often dictate the rules of discourse, influencing who gets to speak, how they speak, and the legitimacy of their voices. This has profound implications in various settings:

- Educational Settings: In schools, the language of instruction and evaluation can privilege certain ways of speaking and understanding while marginalizing others. This can affect students' engagement and success.
- Workplace Communication: In professional environments, the discourse often reflects hierarchical structures, with certain voices being amplified while others are silenced.

Applications of Gee's Discourse Analysis

The insights gained from James Paul Gee's discourse analysis have far-reaching implications across multiple fields, particularly education, linguistics, and social research.

1. Education

Gee's work has significantly influenced educational theory and practice, particularly in the following areas:

- Critical Pedagogy: Educators can use discourse analysis to challenge traditional power structures in the classroom. By recognizing the diverse discourses students bring, teachers can create a more inclusive environment that values all voices.
- Literacy Development: Understanding the different discourses that exist within communities can help educators tailor literacy instruction to be more relevant and engaging for students. This approach recognizes that literacy is not just a set of skills but a social practice influenced by context.

2. Linguistics and Language Studies

Gee's framework has also enriched the field of linguistics by providing tools to analyze language in relation to identity and power. Researchers can explore:

- Language Variation: How different social groups use language in unique ways, reflecting their identities and experiences.
- Language and Social Change: How shifts in language use can indicate broader social changes, such as movements for equality and justice.

3. Social Research

In social research, Gee's discourse analysis offers a lens for examining how language shapes social

realities. Researchers can investigate:

- Media Discourse: Analyzing how language is used in media can reveal underlying ideologies and power relations in society.
- Public Discourse: Studying political speeches, community discussions, and public debates can provide insights into how language influences public opinion and policy.

Challenges and Critiques of Gee's Discourse Analysis

While Gee's discourse analysis offers valuable insights, it is not without its challenges and critiques:

1. Complexity and Accessibility

The theoretical underpinnings of Gee's framework can be complex and may pose challenges for practitioners and researchers who are new to discourse analysis. Simplifying these concepts for broader accessibility is an ongoing concern.

2. Contextual Limitations

Some critics argue that focusing heavily on context can lead to an overly relativistic approach, where the significance of specific linguistic features may be downplayed in favor of broader social considerations. Striking a balance between linguistic analysis and social context remains a challenge.

Conclusion

James Paul Gee's discourse analysis presents a powerful framework for understanding the intricate relationships between language, identity, and power in social contexts. By examining discourse through the lenses of situational, institutional, cultural, and linguistic contexts, researchers and educators can uncover the ways language shapes our understanding of ourselves and the world around us. As the fields of education, linguistics, and social research continue to evolve, the insights derived from Gee's work will undoubtedly remain relevant, fostering critical engagement with the power of discourse in shaping human experiences.

Frequently Asked Questions

Who is James Paul Gee and why is he significant in discourse analysis?

James Paul Gee is an American linguist and educational researcher known for his work on discourse

analysis, particularly in the context of literacy and education. His theories emphasize the importance of language, social contexts, and identity in understanding communication.

What are the key components of Gee's discourse analysis framework?

Gee's framework includes key components such as 'discourses' (ways of being in the world), 'big D' and 'little d' discourses, and the roles of social institutions and power dynamics in shaping language use and meaning.

How does Gee differentiate between 'big D' and 'little d' discourses?

'Big D' discourse refers to the broader social practices and power structures that influence language and meaning, while 'little d' discourse refers to the everyday language and interactions that occur within those structures.

In what ways does Gee's work connect to education and literacy?

Gee's work highlights the role of discourse in shaping literacy practices, arguing that understanding the social and cultural contexts of language use is crucial for effective teaching and learning.

What is the significance of 'affinity groups' in Gee's discourse analysis?

Affinity groups are communities of practice that share common goals and values. In Gee's analysis, they illustrate how identity and participation in specific discourse communities shape individuals' understandings and access to knowledge.

How does Gee's perspective challenge traditional views of language and communication?

Gee challenges the traditional view that language is merely a tool for conveying information. Instead, he posits that language is a social practice that is deeply intertwined with identity, culture, and power.

What role does identity play in Gee's discourse analysis?

Identity is central to Gee's discourse analysis; he argues that individuals construct and negotiate their identities through language and participation in various discourses, impacting their social interactions and learning experiences.

How can Gee's discourse analysis be applied in research?

Gee's discourse analysis can be applied in research by examining how language shapes social interactions, influences power dynamics, and affects learning environments in various contexts, such as classrooms and online communities.

What are some criticisms of Gee's discourse analysis?

Some criticisms include that his theories can be overly complex and difficult to apply in practical settings, and that they may not account for all cultural and linguistic variations in discourse practices.

How has Gee's discourse analysis influenced contemporary linguistics?

Gee's discourse analysis has influenced contemporary linguistics by promoting interdisciplinary approaches that integrate insights from sociology, psychology, and education, thereby enriching the understanding of language use in social contexts.

Find other PDF article:

<https://soc.up.edu.ph/39-point/files?docid=jiY64-3941&title=massey-ferguson-135-diesel-wiring-diagram.pdf>

James Paul Gee Discourse Analysis

Trangkaso Symptoms You Should Not Ignore - Important Facts

Oct 17, 2023 · Trangkaso or flu results in several symptoms including fever, body aches, weakness, coughing, and loss of appetite. A healthy person normally does not need treatment ...

Sintomas ba Palagi ng Trangkaso ang Sakit ng Katawan?

Ano ang sanhi ng sakit ng katawan sa trangkaso? Bago tayo magtungo kung bakit nagkakaroon ng sakit ng katawan sa trangkaso, kailangan muna nating maunawaan ano ang trangkaso. ...

I truly believe this trangkaso everyone has is COVID - Reddit

If someone has any of the symptoms, fever, cough, cold, sore throat, body pains, etc. and is unable to get rt-pcr test due to cost, it's best to treat it as covid and isolate for 10 days from the ...

Gamot Sa Trangkaso O Flu: Ano Ang Pinakamabisang Lunas Para ...

Ang pagkakaroon ng trangkaso o flu ay karaniwang sakit. Isa sa mga mabisang gamot sa trangkaso ay pag-inom ng gamot at maraming tubig.

Ano ang Trangkaso? Sanhi, gamot at lunas - BuhayOFW

This means that you can expect the illness to go away on its own after 7 to 10 days. However, the cause itself should not be the only focus of treatment and management. Interventions to ...

Hepatitis Symptoms: What's the Difference Between Hepatitis A, ...

What's the difference in disease, symptoms and treatment? The lack of knowledge can often cause a delay in the right treatment and diagnosis. Let us get a clearer picture of each type of ...

World Hepatitis Day: 11/28/2023? Causes of hepatitis Hepatitis symptoms

1 day ago · 11/28/2023? causes of hepatitis Hepatitis symptoms
Hepatitis Treatment World Hepatitis Day

World Hepatitis Day 2025: Indian doctors highlight causes, symptoms ...

1 day ago · Every year, World Hepatitis Day is observed on July 28 to raise awareness about a group of diseases that affect the liver and can cause severe damage to health

Lahat ng Dapat Mong Malaman Tungkol sa Trangkaso - kaalaman

Ano ang pagkakaiba sa pagitan ng isang malamig at ang trangkaso? Ang karaniwang sipon at ang trangkaso ay maaaring mukhang katulad sa una. Ang mga ito ay parehong mga sakit sa ...

May trangkaso na ba lahat? : r/Philippines - Reddit

Jan 4, 2022 · Super fast! Yun din biggest red flag ko. Within a span of 3 days, 3 people got sick. And then yung iba may minor complaints (eg, feeling tired) na looking back start of symptoms ...

ALERT - oncor-www

Whether you are moving into a new place, building a new home or business, or need to make other electrical changes, Oncor can guide you through these different processes.

Home [www.oncor.com]

Community How Oncor Restores Power ... Trending Innovation Oncor's 'Weather Current' is Plugged into Latest Weather Data

ABOUT US - oncor-www

The reliable delivery of electric service rests on a dependable transmission system. Oncor, the PUCT and ERCOT work hand-in-hand to forecast growing demand and build additional ...

FOR HOME - oncor-www

The Power to Choose program ensures Texas residents have a choice when it comes to an electric provider. Visit the Texas Public Utility Commission's Power to Choose website for ...

Outage Reporting and Status - Oncor Electric Delivery

My Oncor Alerts Sign up to receive alerts and status updates about power outages.

ELIGIBLE GREEN PROJECTS SPEND REPORT - oncor.com

Oncor is not a seller of electricity, nor does it purchase electricity for resale. Oncor's transmission and distribution assets are located principally in the north-central, eastern, western and ...

OUTAGES & WEATHER - oncor-www

When the power goes out, Oncor's restoration team goes into action. We visit the outage sites to evaluate damage and determine how to safely and quickly restore power.

Oncor Electric Delivery Company LLC

As the largest electric utility in the Permian Basin, Oncor is well-positioned to advance Texas' goal of expanding its network to support significantly higher electric demand

Oncor to Release Third Quarter 2024 Results November 6

Oct 22, 2024 · Headquartered in Dallas, Oncor Electric Delivery Company LLC is a regulated electricity transmission and distribution business that uses superior asset management skills ...

FAQ Billing And Rates - oncor-www

Oncor delivers electricity that you buy from your Retail Electric Provider (REP). We invoice the REP for the cost to deliver electricity to your home or business and those rates and charges ...

Explore James Paul Gee's discourse analysis and its impact on education and communication. Discover how this framework can enhance your understanding. Learn more!

[Back to Home](#)