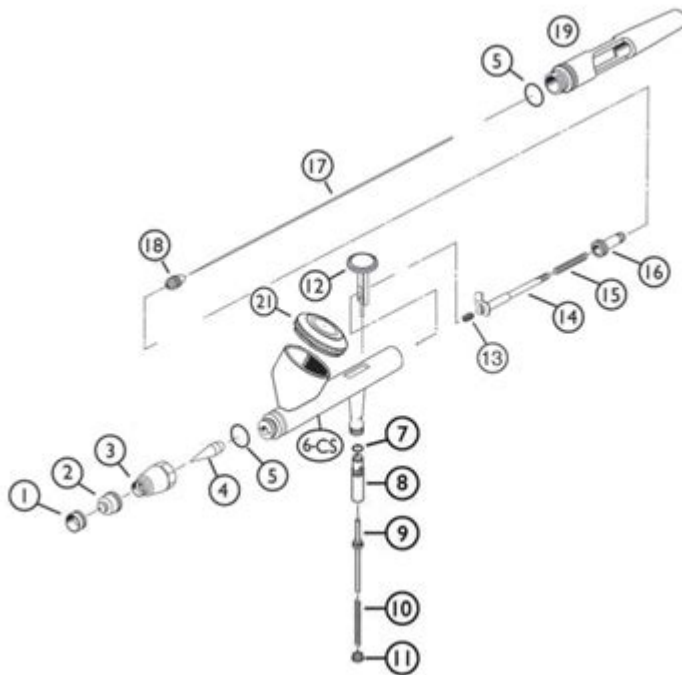


Iwata Eclipse Hp Cs Parts Diagram



Iwata Eclipse HP CS parts diagram serves as an essential resource for artists and airbrush enthusiasts who want to understand and maintain their equipment. The Iwata Eclipse HP CS is a popular dual-action airbrush known for its versatility and precision. This article will delve into the details of the parts diagram, its various components, and the significance of each part in the overall functionality of the airbrush. Understanding these elements not only aids in efficient maintenance but also enhances the overall airbrushing experience.

Overview of the Iwata Eclipse HP CS Airbrush

The Iwata Eclipse HP CS is renowned for its ability to handle a wide range of media and applications. It is particularly favored for its ability to produce fine lines as well as broad strokes, making it suitable for detailed work in various artistic fields.

Key Features of the Eclipse HP CS

- 1. Dual-Action Mechanism:** This feature allows the user to control both the airflow and paint flow simultaneously, providing more versatility in application.
- 2. 0.35 mm Needle and Nozzle:** This size strikes a balance between fine detail and broader coverage, making it versatile for different types of projects.
- 3. Gravity Feed:** The design allows for easier paint flow and reduces the risk of clogging, which is crucial for maintaining a smooth painting process.
- 4. Ergonomic Design:** The comfortable grip and lightweight make it suitable for extended use without fatigue.

Understanding the Parts Diagram

The Iwata Eclipse HP CS parts diagram is a visual representation that details each component of the airbrush. Familiarizing oneself with this diagram is vital for effective maintenance and repair. The diagram typically includes the following main components:

- Body
- Needle
- Nozzle
- Needle Chucking Guide
- Air Cap
- Paint Cup
- Trigger
- Fluid Adjustment Knob
- Mac Valve

Detailed Breakdown of Each Component

1. **Body:** The main structure of the airbrush that houses all other components. It is typically made of durable materials to withstand the pressures of airbrushing.
2. **Needle:** This component is crucial for the precise control of paint flow. It determines the thickness of the line that can be achieved. A damaged needle can lead to inefficient paint flow and poor performance.
3. **Nozzle:** The nozzle works in conjunction with the needle to atomize the paint. Its design affects the spray pattern and is essential for achieving the desired finish.
4. **Needle Chucking Guide:** This part secures the needle in place. It is important for maintaining proper alignment and preventing paint from leaking.
5. **Air Cap:** The air cap is responsible for shaping the spray pattern. Different air caps can create different spray effects, making it important for artists to choose the right one for their needs.
6. **Paint Cup:** This is where the paint is stored for use. It can vary in size and shape depending on the airbrush model and the type of work being done.
7. **Trigger:** The trigger allows the user to control the air and paint flow. It's designed for smooth operation, enabling fine control over the painting process.

8. **Fluid Adjustment Knob:** This knob allows users to adjust the amount of paint that flows through the airbrush. Proper fluid adjustment is key to achieving the desired opacity and texture.

9. **Mac Valve:** The Mac valve is an optional component that enables users to fine-tune air pressure, adding an extra layer of control over the airbrush.

The Importance of Maintenance

Regular maintenance of the Iwata Eclipse HP CS is essential for optimal performance. The longevity of the airbrush relies heavily on how well it is cared for. Understanding the parts diagram can aid in identifying which components may need cleaning or replacement.

Common Maintenance Practices

1. **Cleaning:** After each use, it is crucial to clean the airbrush thoroughly. This includes:

- Disassembling the airbrush using the parts diagram.
- Cleaning the needle and nozzle with appropriate solvents to remove any dried paint.
- Flushing the paint cup and body with cleaner to prevent clogging.

2. **Lubrication:** Periodically, the needle and other moving parts should be lightly lubricated to ensure smooth operation.

3. **Inspection:** Regularly inspect parts for wear and tear. Pay special attention to the needle and nozzle, as these are most susceptible to damage.

4. **Replacement:** When components begin to show signs of damage or excessive wear, replace them promptly to maintain performance.

Resources for Further Learning

For those looking to deepen their understanding of the Iwata Eclipse HP CS and its parts diagram, a variety of resources are available:

1. **Iwata Official Website:** The manufacturer often provides manuals and diagrams for their products, which can be invaluable for maintenance.
2. **YouTube Tutorials:** Many artists share their experiences and techniques for maintaining airbrushes, including detailed breakdowns of different models.
3. **Online Forums:** Communities of airbrush enthusiasts can provide support and share maintenance tips based on their experiences.

Conclusion

The **Iwata Eclipse HP CS parts diagram** is more than just a visual aid; it is an essential tool for anyone who uses this popular airbrush. By familiarizing oneself with the various components, artists can ensure proper maintenance and enhance their airbrushing skills. Regular cleaning, inspection, and

replacement of parts not only prolong the life of the airbrush but also improve the quality of the artwork produced. With the right knowledge and resources, users can fully harness the potential of the Iwata Eclipse HP CS, making it an invaluable asset in their artistic toolkit.

Frequently Asked Questions

What is the Iwata Eclipse HP CS airbrush used for?

The Iwata Eclipse HP CS airbrush is commonly used for fine detail work in various applications such as model painting, illustration, and makeup artistry.

Where can I find the parts diagram for the Iwata Eclipse HP CS?

The parts diagram for the Iwata Eclipse HP CS can typically be found on the official Iwata website or in the user manual that comes with the airbrush.

What are the key components of the Iwata Eclipse HP CS airbrush?

Key components of the Iwata Eclipse HP CS airbrush include the nozzle, needle, paint cup, trigger, and body assembly.

How can I identify the parts that need replacement in my Iwata Eclipse HP CS?

You can identify parts that need replacement by referring to the parts diagram, checking for visible damage, or noticing performance issues like inconsistent spray or clogging.

Is the Iwata Eclipse HP CS compatible with other airbrush parts?

While some components may be compatible with other Iwata models, it's recommended to use original Iwata parts for the Eclipse HP CS to ensure optimal performance.

What maintenance tips are important for the Iwata Eclipse HP CS?

Regular cleaning, proper storage, and periodic inspection of the nozzle and needle are essential maintenance tips for the Iwata Eclipse HP CS to ensure longevity and performance.

Can I download the Iwata Eclipse HP CS parts diagram online?

Yes, the Iwata Eclipse HP CS parts diagram is often available for download in PDF format from the Iwata official website or authorized retailers.

Find other PDF article:

<https://soc.up.edu.ph/40-trend/files?docid=RVC99-3907&title=mcdougal-earths-atmosfer-answer-key-study-guide.pdf>

Iwata Eclipse Hp Cs Parts Diagram

1,000 US Dollars to Canadian Dollars - 1,000 USD to CAD Ex...

2 days ago · 1,000 US Dollars are worth \$ 1,369.75 CAD today as of 5:00 PM UTC. Check the latest currency exchange ...

1,000 USD to CAD - US Dollars to Canadian Dollars Exchang...

Get the latest 1,000 US Dollar to Canadian Dollar rate for FREE with the original Universal Currency ...

1 thousand US dollars to Canadian dollars Exchange Ra...

Convert 1 thousand USD to CAD with the Wise Currency Converter. Analyze historical currency charts or live US ...

Convert United States Dollar to Canadian Dollar | USD to CA...

2 days ago · Currency converter to convert from United States Dollar (USD) to Canadian Dollar (CAD) including ...

1000 United States Dollars (USD) to Canadian Dollars (C...

Jul 22, 2025 · Learn the value of 1000 United States Dollars (USD) in Canadian Dollars (CAD) today. The dynamics of ...

FIND YOUR NEAREST OPEN LAUNDROMAT IN 3 SECONDS

Find 24-hour, coin-operated, and self-service laundromats near you. Discover open, cheap, or closest options within 5 miles all near you.

July 2025: Find Nearby Laundromat Reviews - Yelp

Check out this list of laundromats in your area to find the one that best suits your needs. There are coin operated self-service locations, as well as full-service wash n' fold businesses ready ...

Laundromat Finder - Best Laundromats Near You

Find the best laundromats near you in your city, based on user reviews, ratings, and amenities.

24 Hour Laundromat Omaha | Coin Laundry Omaha | Laundry ...

We offer 200G washing machines that will allow you to be able to dry your clothes in half of the time it takes you at other coin laundries. Including 6 locations, we offer the largest selection of ...

Speed Queen Laundry | Clean, Modern Laundromat | Kid-Friendly

Speed Queen Laundry offers self-service laundry as well as wash, dry, fold full-service laundry.

Laundromat Near Me | 24 Hour Coin Laundry Service Location

Find a Laundromat Near You. We are the largest directory of coin laundry services and local self service laundromats open 24 hours in your area.

Clean Laundry Laundromat | Safe, Modern, & Fast

Aug 3, 2023 · Clean Laundry is a rapidly growing chain of laundromats with a focus on providing a clean, comfortable, and convenient alternative to traditional coin-operated laundromats. Our ...

Quality Laundromat | LaundroLab

In partnership with LaundryCares, LaundroLab is proud to provide an environment that is uniquely designed to create safe, fun, and engaging places for children and families.

Self Service Laundromat Near You | SuperSuds Laundromat

Visit a SuperSuds self service laundromat. Over 30 locations, a wide variety of payment options, large washers, fast dryers & Free WIFI.

Clean Laundry Laundromat | Locations Near You | Always Open

There are Clean Laundry laundromats conveniently located across the United States, with more built every year. See the map for all locations.

Explore the Iwata Eclipse HP CS parts diagram for a detailed look at its components. Learn more about maintenance and upgrades to enhance your airbrush experience!

[Back to Home](#)