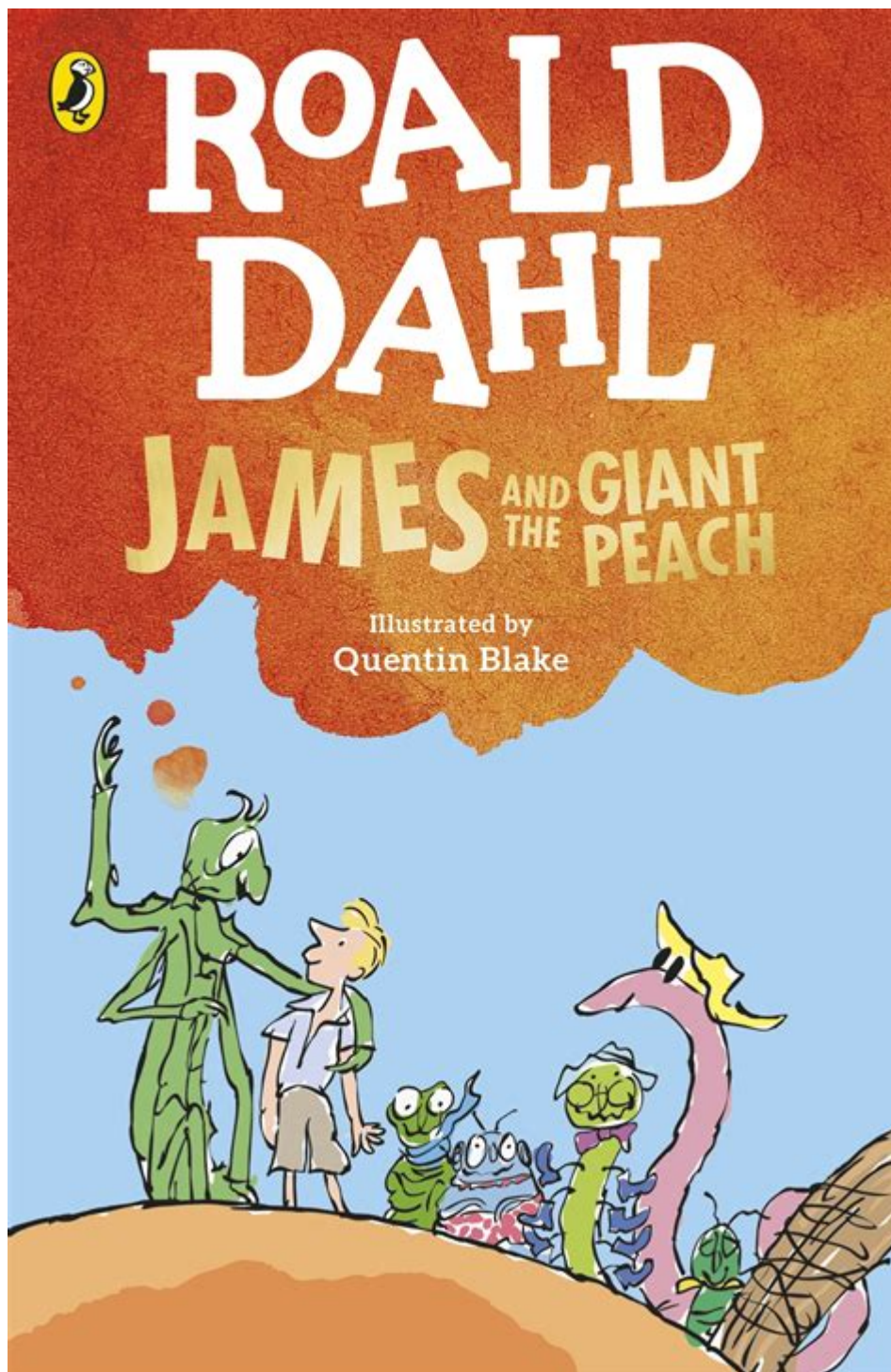


James And The Giant Peach Roald Dahl



James and the Giant Peach is a beloved children's novel written by the renowned author Roald Dahl. First published in 1961, the story captures the imagination of readers with its whimsical plot and unforgettable characters. The book tells the tale of young James Henry Trotter, who embarks on an extraordinary adventure after discovering a giant peach that serves as a vessel for friendship and escape from his mundane life. Dahl's signature blend of dark humor, fantastical elements, and life lessons makes this book a timeless classic.

Plot Summary

The story begins with James, a young boy who lives with his two cruel aunts, Aunt Sponge and Aunt Spiker, after the tragic loss of his parents. The aunts are selfish and abusive, subjecting James to a life of hard labor and neglect. One day, James encounters a mysterious old man who gives him magical green crystals, instructing him to plant them near a peach tree. When the crystals grow into a colossal peach, James's life takes a dramatic turn.

As the peach grows larger than the house, Aunt Sponge and Aunt Spiker plan to exploit it for profit. However, James discovers a way into the peach and meets a group of anthropomorphic insects, including:

- Centipede: A charming yet brash character who loves to boast.
- Grasshopper: A wise and musical figure who often serves as the voice of reason.
- Ladybug: A nurturing and motherly presence among the group.
- Spider: A clever and resourceful character who adds to the group's dynamics.
- Earthworm: A timid but loyal friend who adds humor to their journey.

Together, they embark on an incredible journey across the ocean, facing various challenges and adventures. The giant peach floats on a cloud, allowing the group to escape Aunt Sponge and Aunt Spiker. Along the way, they encounter sharks, seagulls, and other whimsical creatures that test their unity and courage.

Themes and Motifs

James and the Giant Peach explores several profound themes that resonate with both children and adults. These include:

1. Friendship and Camaraderie: The bond formed between James and the insects emphasizes the importance of friendship. Each character contributes unique skills, showcasing how teamwork can lead to overcoming obstacles.
2. Resilience and Hope: James's journey reflects the power of resilience. Despite his difficult beginnings, he remains hopeful and courageous, embodying the belief that one can rise above adversity.
3. The Power of Imagination: The fantastical elements of the story, from the giant peach to talking insects, highlight the importance of imagination. Dahl encourages readers to embrace creativity as a means of escape and adventure.
4. Childhood Innocence: The contrast between James's innocence and the cruelty of his aunts serves as a reminder of the harsh realities children can face. The story advocates for kindness, empathy, and the protection of childhood.

5. Transformation and Growth: Throughout the journey, James undergoes significant personal growth. He evolves from a timid, oppressed boy into a brave and resourceful leader, symbolizing the journey toward self-discovery.

Character Analysis

Each character in *James and the Giant Peach* plays a crucial role in the narrative, contributing to the overarching themes of friendship, courage, and transformation.

James Henry Trotter

James is the protagonist whose journey forms the heart of the story. He is characterized by his:

- Curiosity: James possesses a natural curiosity that drives him to explore the giant peach and engage with the insects.
- Compassion: His kind-hearted nature allows him to connect with the other characters, fostering a sense of belonging and camaraderie.
- Courage: Despite his fears, James learns to confront challenges head-on, ultimately transforming into a brave leader.

Aunt Sponge and Aunt Spiker

The antagonistic figures in the story, Aunt Sponge and Aunt Spiker, represent oppression and cruelty. Their:

- Selfishness: They exploit James for their own gain, epitomizing the neglect and abuse children can face.
- Greed: Their desire for wealth from the giant peach highlights the darker aspects of human nature.

The Insects

The anthropomorphic insects serve as both friends and mentors to James. Each character adds depth to the story:

- Centipede: His bravado and humor provide comic relief while also showcasing the theme of loyalty.
- Grasshopper: As a symbol of wisdom, he often guides the group and encourages teamwork.
- Ladybug: Her nurturing nature fosters a sense of family among the group.
- Spider: Represents resourcefulness and ingenuity, proving that intelligence

can be just as valuable as physical strength.

- Earthworm: His timid demeanor adds vulnerability to the group, highlighting that everyone has strengths and weaknesses.

Literary Style and Illustrations

Roald Dahl's distinctive writing style is characterized by:

- Vivid Imagery: Dahl's descriptions bring the fantastical elements of the story to life, allowing readers to visualize the giant peach and its inhabitants.
- Playful Language: The use of playful and inventive language engages young readers, making the story accessible and enjoyable.
- Humor and Wit: Dahl infuses humor into the narrative, balancing darker themes with light-hearted moments.

The original illustrations by Quentin Blake complement Dahl's writing perfectly. Blake's whimsical and expressive artwork captures the essence of the characters and the fantastical nature of the story. His illustrations add an extra layer of charm, making the book visually appealing to readers.

Adaptations and Legacy

James and the Giant Peach has inspired various adaptations, including:

1. Film Adaptation (1996): Directed by Henry Selick, this animated film brought Dahl's story to life with a mix of stop-motion and live-action. The film received critical acclaim for its imaginative visuals and faithful representation of the book.
2. Stage Adaptations: The story has been adapted for the stage multiple times, including a successful musical version. These adaptations continue to introduce new audiences to Dahl's enchanting world.
3. Audiobooks: The novel has been transformed into various audiobooks, often narrated by well-known actors, allowing listeners to experience the story in a new format.
4. Merchandise and Spin-offs: The popularity of the book has led to the creation of merchandise, including toys, games, and activity books, further embedding James's adventure into popular culture.

Impact on Children's Literature

James and the Giant Peach has had a significant impact on children's

literature. It has:

- Encouraged Reading: The book's engaging narrative and whimsical elements have inspired generations of young readers to explore literature.
- Fostered Imagination: Dahl's emphasis on creativity encourages children to use their imaginations, fostering a love for storytelling.
- Promoted Resilience: The themes of overcoming adversity resonate with readers, teaching valuable lessons about resilience and hope.

Conclusion

In conclusion, *James and the Giant Peach* remains a cherished classic in children's literature, illustrating Roald Dahl's remarkable storytelling ability. Through the adventures of James and his insect friends, readers are transported into a world of wonder, friendship, and growth. The book's themes and characters continue to resonate, making it an enduring favorite for readers of all ages. Whether through its charming prose or delightful illustrations, *James and the Giant Peach* captures the essence of childhood imagination and the power of friendship, leaving a lasting legacy in the literary world.

Frequently Asked Questions

What is the main premise of 'James and the Giant Peach'?

The story follows a young boy named James Henry Trotter who, after the tragic loss of his parents, finds himself living with his cruel aunts. He discovers a giant peach that he enters, leading to an adventure with anthropomorphic insect friends.

Who are some of the key characters in 'James and the Giant Peach'?

Key characters include James Henry Trotter, who is the protagonist; his two aunts, Aunt Sponge and Aunt Spiker; and his insect friends, such as the Old Green Grasshopper, Miss Spider, the Ladybug, and the Earthworm.

What themes are explored in 'James and the Giant Peach'?

The book explores themes of friendship, perseverance, and the importance of imagination. It also addresses issues such as loss, loneliness, and the journey from childhood to adulthood.

How does Roald Dahl use humor in 'James and the Giant Peach'?

Dahl employs humor through exaggerated characters, whimsical situations, and playful language, making the story engaging for children while also allowing for deeper messages about resilience and hope.

What impact has 'James and the Giant Peach' had on children's literature?

The book has become a classic in children's literature, celebrated for its imaginative storytelling and unique characters. It has inspired adaptations in various media, including theater and film, and continues to be a favorite for readers of all ages.

Find other PDF article:

<https://soc.up.edu.ph/59-cover/pdf?ID=bsi68-2384&title=the-giza-power-plant-technologies-of-ancient-egypt.pdf>

[James And The Giant Peach Roald Dahl](#)

Juegos en la nube de GeForce | NVIDIA GeForce NOW

GeForce NOW transforma instantáneamente tu portátil, equipo de sobremesa, Mac, dispositivo Android TV, iPhone o iPad en el potente PC para gaming con el que siempre has soñado.

The Next Generation in Cloud Gaming - GeForce NOW | NVIDIA

Play PC Games seamlessly on all of your devices. Anywhere. GeForce gaming in the cloud. Sign up today.

GeForce-Cloud-Gaming | NVIDIA GeForce NOW

GeForce NOW verwandelt alle Laptops, Desktops, Macs, TVs, Android-Geräte, iPhones oder iPads sofort in das leistungsstarke PC-Gaming-Rig, von dem du schon immer geträumt hast.

Cloud gaming GeForce | NVIDIA GeForce NOW

Tutti i tuoi dispositivi GeForce NOW trasforma subito il tuo laptop, desktop Mac, TV, dispositivo Android, iPhone o iPad nel potente PC gaming che hai sempre sognato.

GeForce NOW | A próxima geração dos jogos em nuvem | NVIDIA

O GeForce NOW se conecta às lojas digitais de jogos para PC para que você possa curtir os jogos que já possui. Além disso, as compras de jogos que você fizer em suas contas pessoais ...

Gaming w chmurze GeForce | NVIDIA GeForce NOW

Ciesz się płynną rozgrywką PC na wszystkich swoich urządzeniach. Gdziekolwiek jesteś. Gaming GeForce w chmurze.

Cloud Gaming GeForce | NVIDIA GeForce NOW

GeForce NOW peut transformer instantanément votre ordinateur portable, PC de bureau, Mac, appareil Android, iPhone ou iPad pour en faire le PC gaming dont vous avez toujours rêvé.

GeForce NOW | The Next Generation in Cloud Gaming | NVIDIA

GeForce NOW

NVIDIA SHIELD - The Best Streaming Media Device

The GeForce NOW Ultimate membership raises the bar on cloud gaming. With GeForce RTX 4080-class power streaming from the cloud, Ultimate delivers ultra-high FPS gaming — up to ...

GeForce NOW | Bulutta Oyun Deneyiminde Yeni Nesil | NVIDIA

GeForce NOW, dijital PC oyunu mağazalarına bağlanarak sahip olduğunuz oyunları oynama imkanı sağlar. Ayrıca, kişisel mağaza hesaplarınız üzerinden satın aldığınız oyunlarınızı ...

“CAM”

Jun 8, 2024 · "CAM" "Cambodia" "jiǎn pǔ zhài" ...

Cambodia

Cambodia "cambodia" Kampuchea ...

-

15 China Mongolia North Korea South Korea Japan 2 11 ...

kh

kh The Kingdom of Cambodia Cambodia) ...

kampuchea combodia -

Jul 13, 2024 · Cambodia Cambodia Kampuchea ...

Dive into the magical world of "James and the Giant Peach" by Roald Dahl! Discover the enchanting story and its unforgettable characters. Learn more now!

[Back to Home](#)