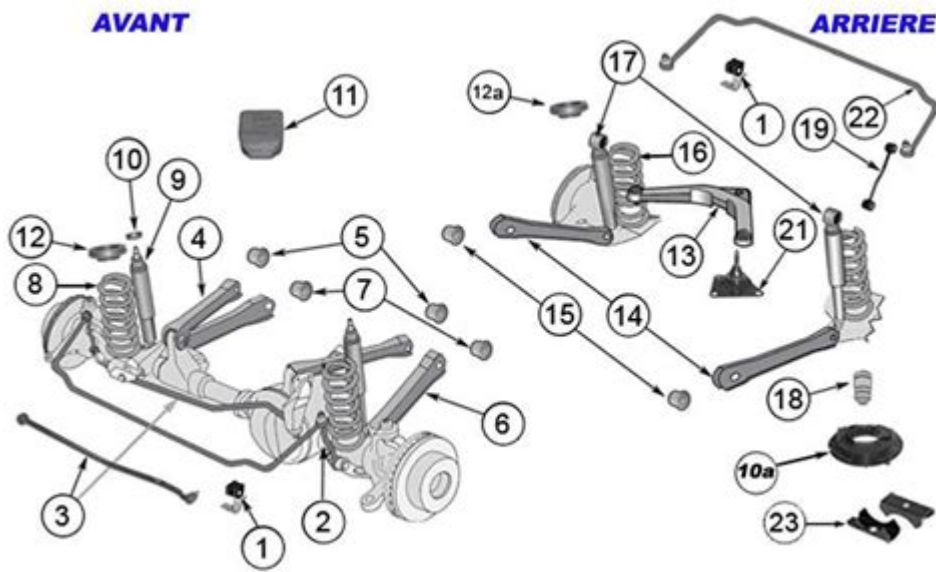


Jeep Grand Cherokee Tie Rod Diagram



Jeep Grand Cherokee Tie Rod Diagram

The Jeep Grand Cherokee is a popular SUV known for its rugged performance and off-road capabilities. One critical component of its steering and suspension system is the tie rod, which connects the steering rack to the wheel assembly. Understanding the tie rod's function, its diagram, and related maintenance can greatly enhance the longevity and safety of your vehicle. This article will provide an in-depth look at the tie rod in the Jeep Grand Cherokee, how it works, its components, and tips for maintenance.

What is a Tie Rod?

A tie rod is an essential part of a vehicle's steering system. It plays a crucial role in transferring the steering motion from the steering wheel to the wheels. Here are some key functions of the tie rod:

- **Steering Control:** The tie rod helps in controlling the direction of the vehicle by connecting the steering mechanism to the wheels.
- **Suspension Support:** It aids in maintaining proper alignment between the wheels and the suspension, ensuring a stable ride.
- **Load Distribution:** Tie rods help distribute the load from the steering system to the wheels, which is fundamental for the vehicle's stability.

Components of the Tie Rod Assembly

The tie rod assembly consists of several key components, each playing a vital role in the overall function of the steering system. These components include:

1. Inner Tie Rod

The inner tie rod connects the steering rack to the outer tie rod. It is usually adjustable, allowing for alignment adjustments.

2. Outer Tie Rod

The outer tie rod connects to the wheel assembly, translating the movement from the inner tie rod to the wheels. It is critical for precise steering control.

3. Tie Rod Ends

Tie rod ends are ball-and-socket joints at the ends of the tie rods. They allow for angular movement and flexibility, ensuring that the wheels can turn smoothly while accommodating suspension movement.

4. Dust Boots

Dust boots cover the tie rod ends, protecting them from dirt, moisture, and debris, which can cause premature wear.

Understanding the Tie Rod Diagram

The tie rod diagram for the Jeep Grand Cherokee provides a visual representation of how the tie rod assembly is configured and how it interacts with other components in the steering system. While the exact diagram may vary depending on the model year and specific configuration, the general layout remains consistent.

In a typical tie rod diagram, you will find the following elements:

- Steering Rack: The starting point of the steering system from where the tie rods extend.
- Inner Tie Rod: Connected to the steering rack, this part extends outward.
- Outer Tie Rod: This part connects to the wheel assembly.
- Tie Rod Ends: Located at each end of the tie rods, these are depicted as joints connecting to the steering rack and wheel assembly.
- Dust Boots: Shown covering the tie rod ends, indicating their protective role.

A diagram not only illustrates the components but also often includes part numbers and specifications, which are essential for maintenance and replacement.

Symptoms of a Failing Tie Rod

Recognizing the signs of a failing tie rod is crucial for maintaining the safety and performance of your Jeep Grand Cherokee. Common symptoms include:

- **Uneven Tire Wear:** If the tie rod is worn, it can cause uneven tire wear, which may lead to costly replacements.
- **Loose Steering:** A loose or imprecise steering feel can indicate a problem with the tie rod.
- **Steering Wheel Vibration:** Excessive vibration in the steering wheel, especially when turning, may suggest tie rod issues.
- **Clunking Noises:** A clunking sound when going over bumps or turning could indicate a failing tie rod end.
- **Alignment Issues:** If the vehicle pulls to one side or the steering wheel is off-center, it may be due to tie rod misalignment.

Maintenance Tips for Tie Rods

Regular maintenance of the tie rod assembly can help prevent premature wear and ensure optimal performance. Here are some tips:

1. Regular Inspections

- Check the tie rods for signs of wear, such as rust, cracks, or looseness.
- Inspect the dust boots for any tears or damage that could expose the tie rod ends to contaminants.

2. Wheel Alignment

- Ensure that your vehicle's wheels are aligned properly. Misalignment can lead to uneven tire wear and excessive strain on the tie rods.

3. Lubrication

- If applicable, ensure that the tie rod ends are properly lubricated to minimize friction and wear.

4. Professional Service

- Have your tie rods inspected and serviced by a professional mechanic at regular intervals, especially after off-road driving or hitting significant potholes.

Replacement of Tie Rods

If you find that your tie rods are worn or damaged, timely replacement is essential. Here's a brief guide on how to replace tie rods on a Jeep Grand Cherokee:

Tools and Materials Needed

- Wrench set

- Socket set
- Tie rod end puller
- Torque wrench
- New tie rod assembly
- Grease

Replacement Steps

1. Lift the Vehicle: Securely lift the vehicle using a jack and jack stands.
2. Remove the Wheel: Take off the wheel to access the tie rod assembly.
3. Disconnect the Tie Rod End: Use a tie rod end puller to disconnect the tie rod end from the steering knuckle.
4. Remove the Old Tie Rod: Unscrew the inner tie rod from the steering rack using the appropriate socket.
5. Install New Tie Rod: Thread the new inner tie rod into the steering rack and attach the outer tie rod.
6. Reconnect Tie Rod End: Reattach the tie rod end to the steering knuckle.
7. Reassemble: Put the wheel back on and lower the vehicle.
8. Align Wheels: Have a professional wheel alignment performed to ensure proper steering.

Conclusion

Understanding the Jeep Grand Cherokee tie rod diagram and its function is crucial for any vehicle owner interested in maintaining their SUV's performance. The tie rod is vital for effective steering and suspension, and its health directly impacts the vehicle's safety and drivability. Regular inspections, timely replacements, and proper maintenance can ensure that your tie rod assembly remains in top condition. Always consult a professional mechanic if you're unsure about any aspect of the tie rod's condition or replacement process. With proper care, your Jeep Grand Cherokee will continue to provide the reliable performance that has made it a favorite among SUV enthusiasts.

Frequently Asked Questions

What is the purpose of the tie rod in a Jeep Grand Cherokee?

The tie rod connects the steering system to the wheels, allowing for precise steering control and stability.

Where can I find a tie rod diagram for my specific model year of Jeep Grand Cherokee?

You can find a tie rod diagram in the vehicle's service manual, online forums dedicated to Jeep owners, or websites that specialize in automotive repair information.

What are common symptoms of a failing tie rod in a Jeep Grand Cherokee?

Common symptoms include uneven tire wear, a loose or wandering steering wheel, clunking noises when turning, and vibrations while driving.

How do I replace a tie rod on a Jeep Grand Cherokee?

To replace a tie rod, lift the vehicle, remove the wheel, disconnect the old tie rod from the steering knuckle, and install the new tie rod by reversing the steps, ensuring to align it according to the tie rod diagram.

Are there different types of tie rods for the Jeep Grand Cherokee?

Yes, there are inner and outer tie rods, and they may vary depending on the model year and specific suspension setup of the Jeep Grand Cherokee.

What tools do I need to inspect or replace the tie rod on my Jeep Grand Cherokee?

You will typically need a socket set, wrenches, a tie rod end puller, and possibly a torque wrench to ensure proper installation.

Find other PDF article:

<https://soc.up.edu.ph/14-blur/pdf?trackid=cwV08-2938&title=complete-step-by-step-upholstery.pdf>

[Jeep Grand Cherokee Tie Rod Diagram](#)

Why your steering wanders or seems loose. - Jeep Enthusiast F...

Oct 6, 2023 · Why your steering wanders or seems loose One of the biggest issues with Jeeps and a topic that almost repeats itself in a new thread each week is ...

Jeep Wrangler Forums

Jun 13, 2025 · The Jeep Wrangler (JL) is the fourth generation of the Wrangler off-road vehicle, available in two- and four-door bodies starting in 2017. Forum ...

AUX Battery Location | Jeep Enthusiast Forums

Dec 5, 2024 · Here it is for anyone that stumbles onto this post: (11) Jeep Grand Cherokee Stop / Start Unavailable Service Fix Auxiliary Battery location & ...

Starting System Diagnostics - Jeep Enthusiast Forums

Dec 27, 2010 · Jeep Enthusiast Forums provides answers from our community and over 22 other related forums.

All Marketplace Listings - Jeep Enthusiast Forums

Jun 14, 2025 · For Sale Jeep CJ5 CJ7 CJ8 Whitco soft top frame parts & hardware, rods, plastic trim, brackets \$240.00 mattt181 Apr 28, 2025 Body & Interior ...

Why your steering wanders or seems loose. - Jeep Enthusiast Forums

Oct 6, 2023 · Why your steering wanders or seems loose One of the biggest issues with Jeeps and a topic that almost repeats itself in a new thread each week is "wandering or loose steering". As a forum contributor on JeepForum for close to 5 years now, I see it over and over. I'll first volunteer that...

Jeep Wrangler Forums

Jun 13, 2025 · The Jeep Wrangler (JL) is the fourth generation of the Wrangler off-road vehicle, available in two- and four-door bodies starting in 2017. Forum sponsored by: Quadratic

AUX Battery Location | Jeep Enthusiast Forums

Dec 5, 2024 · Here it is for anyone that stumbles onto this post: (11) Jeep Grand Cherokee Stop / Start Unavailable Service Fix Auxiliary Battery location & Replacement - YouTube EDIT: In case that link becomes broken, it's under the front passenger seat indeed. Roll the seat all the way forward and access from the rear passenger side door. Both main and aux batteries are there. ...

Starting System Diagnostics - Jeep Enthusiast Forums

Dec 27, 2010 · Jeep Enthusiast Forums provides answers from our community and over 22 other related forums.

All Marketplace Listings - Jeep Enthusiast Forums

Jun 14, 2025 · For Sale Jeep CJ5 CJ7 CJ8 Whitco soft top frame parts & hardware, rods, plastic trim, brackets \$240.00 mattt181 Apr 28, 2025 Body & Interior Parts Anaheim, California 0 196

Anyone tow a camper with the Gladiator? - Jeep Enthusiast Forums

Dec 18, 2024 · Looking into getting a gladiator within the next 6 months or so. Mostly looking at used but who knows. May eventually want to tow a small camper less than 20 ft long. Has anyone done this? What are the real world limits a gladiator can safely tow? Thanks

YJ Wrangler Technical Forum - Jeep Enthusiast Forums

Jul 12, 2007 · Second generation of the classic Jeep - manufactured from 1987 till 1995. Known by their square headlights.

2025 Grand Cherokee - Jeep Enthusiast Forums

Jul 13, 2025 · Jeep Enthusiast Forums provides answers from our community and over 22 other related forums.

1984 Jeep CJ-7 (May Sell, No Clue On Value)

Jul 15, 2025 · 304-Powered 1984 Jeep CJ-7 Bid for the chance to own a 304-Powered 1984 Jeep CJ-7 at auction with Bring a Trailer, the home of the best vintage and classic cars online. Lot #55,174.

2024 grand cherokee intermittent issues - Jeep Enthusiast Forums

Dec 16, 2024 · Jeep Enthusiast Forums provides answers from our community and over 22 other related forums.

Explore our detailed Jeep Grand Cherokee tie rod diagram to understand its components and functionality. Learn more about maintenance tips and troubleshooting today!

[Back to Home](#)