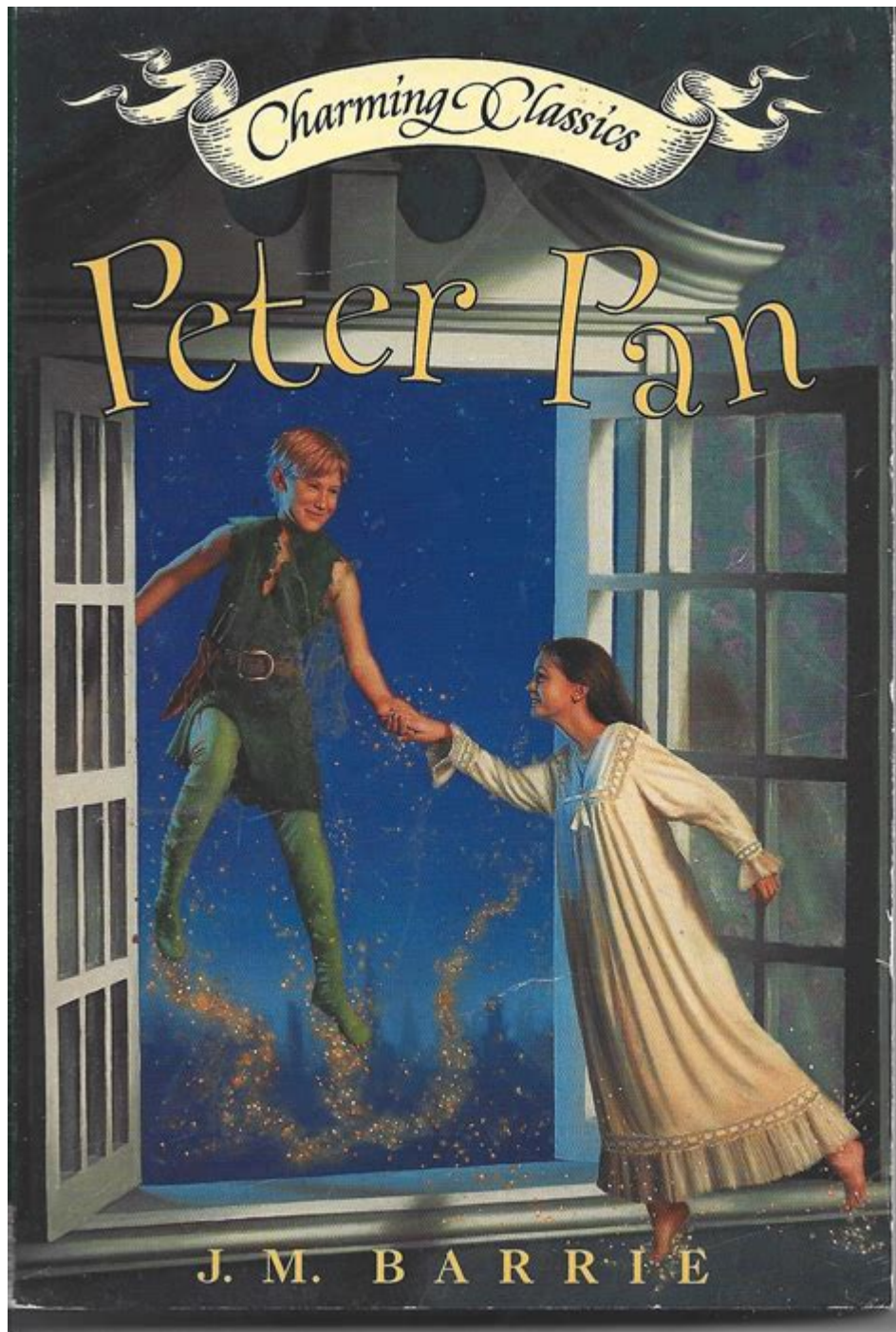


James M Barrie Peter Pan



JAMES M. BARRIE PETER PAN IS A TIMELESS TALE THAT HAS CAPTURED THE HEARTS OF AUDIENCES FOR OVER A CENTURY. THE STORY OF PETER PAN, THE BOY WHO NEVER GROWS UP, AND HIS ADVENTURES IN THE ENCHANTING WORLD OF NEVERLAND HAS BECOME SYNONYMOUS WITH CHILDHOOD INNOCENCE, IMAGINATION, AND THE DESIRE TO ESCAPE THE RESPONSIBILITIES OF ADULTHOOD. THIS ARTICLE DELVES INTO THE LIFE OF JAMES M. BARRIE, THE ORIGINS OF PETER PAN, ITS THEMES, ADAPTATIONS, AND ENDURING LEGACY.

BIOGRAPHY OF JAMES M. BARRIE

JAMES MATTHEW BARRIE WAS BORN ON MAY 9, 1860, IN KIRRIEMUIR, SCOTLAND. HE WAS THE NINTH OF TEN CHILDREN IN A

FAMILY THAT WAS HEAVILY INFLUENCED BY HIS MOTHER, WHO INSTILLED IN HIM A LOVE FOR STORYTELLING. BARRIE'S EARLY EXPERIENCES, PARTICULARLY THE LOSS OF HIS BROTHER DAVID AT A YOUNG AGE, GREATLY IMPACTED HIS VIEWS ON CHILDHOOD AND THE CONCEPT OF LOSS, THEMES THAT WOULD LATER RESONATE IN HIS WORKS.

BARRIE ATTENDED EDINBURGH UNIVERSITY, WHERE HE BEGAN HIS CAREER AS A WRITER AND JOURNALIST. AFTER MOVING TO LONDON IN THE 1890s, HE GAINED RECOGNITION FOR HIS PLAYS, AND HIS LITERARY PROWESS BECAME EVIDENT. HOWEVER, IT WAS HIS CONNECTION WITH THE LLEWELYN DAVIES FAMILY THAT WOULD INSPIRE HIS MOST FAMOUS CREATION.

THE LLEWELYN DAVIES BOYS

BARRIE'S FRIENDSHIP WITH THE LLEWELYN DAVIES FAMILY BEGAN IN 1897. HE BECAME PARTICULARLY CLOSE TO THE FIVE BOYS: GEORGE, JACK, PETER, MICHAEL, AND NICHOLAS. THE BOND HE FORMED WITH THEM, ESPECIALLY WITH PETER, BECAME A SIGNIFICANT SOURCE OF INSPIRATION FOR THE CHARACTER OF PETER PAN. BARRIE OFTEN ENGAGED THE BOYS IN IMAGINATIVE PLAY, WHICH SPARKED HIS FASCINATION WITH THE THEMES OF CHILDHOOD AND MORTALITY.

TRAGICALLY, THE BOYS' LIVES WERE MARKED BY LOSS. THE DEATH OF THEIR FATHER, ARTHUR, IN 1907 DEEPLY AFFECTED BARRIE, LEADING HIM TO BECOME A GUARDIAN FOR THE BOYS. THIS RELATIONSHIP FURTHER FUELED HIS DESIRE TO CREATE A STORY THAT IMMORTALIZED THE ESSENCE OF CHILDHOOD.

THE CREATION OF PETER PAN

PETER PAN FIRST APPEARED IN BARRIE'S 1902 NOVEL "THE LITTLE WHITE BIRD." HOWEVER, IT WAS THE 1904 PLAY "PETER PAN, OR THE BOY WHO WOULDN'T GROW UP" THAT SOLIDIFIED THE CHARACTER'S PLACE IN LITERARY HISTORY. THE PLAY WAS A GROUNDBREAKING WORK THAT COMBINED FANTASY AND REALITY, CAPTIVATING AUDIENCES WITH ITS IMAGINATIVE STORYLINE AND RICH CHARACTERS.

PLOT OVERVIEW

THE STORY FOLLOWS PETER PAN, A MISCHIEVOUS BOY WHO CAN FLY AND REFUSES TO GROW UP. HE LIVES IN THE MAGICAL LAND OF NEVERLAND, WHERE HE BEFRIENDS THE LOST BOYS, FAIRIES LIKE TINKER BELL, AND ENCOUNTERS PIRATES LED BY THE SINISTER CAPTAIN HOOK. THE NARRATIVE BEGINS WHEN PETER VISITS THE NURSERY OF WENDY, JOHN, AND MICHAEL DARLING, INVITING THEM TO JOIN HIM ON AN ADVENTURE IN NEVERLAND.

KEY PLOT POINTS INCLUDE:

1. PETER'S INVITATION: PETER'S VISIT TO THE DARLING HOUSEHOLD INTRODUCES THE CHILDREN TO THE WONDERS OF FLIGHT AND THE FANTASY OF NEVERLAND.
2. ADVENTURES IN NEVERLAND: THE CHILDREN EXPERIENCE VARIOUS ESCAPADES, INCLUDING BATTLES WITH PIRATES AND ENCOUNTERS WITH MERMAIDS AND INDIANS.
3. CONFLICT WITH HOOK: CAPTAIN HOOK, PETER'S NEMESIS, EMBODIES THE FEARS AND CHALLENGES OF GROWING UP, CREATING TENSION THROUGHOUT THE STORY.
4. RETURN TO REALITY: ULTIMATELY, THE CHILDREN MUST CONFRONT THE REALITY OF RETURNING HOME, HIGHLIGHTING THE BITTERSWEET NATURE OF CHILDHOOD AND THE INEVITABLE TRANSITION TO ADULTHOOD.

THEMES IN PETER PAN

"PETER PAN" IS RICH WITH THEMES THAT RESONATE ACROSS GENERATIONS. THESE INCLUDE:

- THE INNOCENCE OF CHILDHOOD: THE STORY CELEBRATES THE JOYS AND WONDERS OF CHILDHOOD, EMPHASIZING THE IMPORTANCE OF IMAGINATION AND PLAY.
- FEAR OF GROWING UP: PETER'S REFUSAL TO GROW UP SYMBOLIZES THE FEAR OF ADULTHOOD AND THE LOSS OF INNOCENCE

THAT COMES WITH IT.

- THE NATURE OF MEMORY AND LOSS: BARRIE'S OWN EXPERIENCES WITH LOSS ARE REFLECTED IN THE STORY, SHOWCASING HOW MEMORIES SHAPE OUR UNDERSTANDING OF CHILDHOOD.
- FRIENDSHIP AND LOYALTY: THE BONDS BETWEEN CHARACTERS, SUCH AS PETER AND WENDY, HIGHLIGHT THE IMPORTANCE OF COMPANIONSHIP AND SUPPORT.

ADAPTATIONS OF PETER PAN

SINCE ITS DEBUT, "PETER PAN" HAS INSPIRED COUNTLESS ADAPTATIONS ACROSS VARIOUS MEDIUMS, FROM THEATER TO FILM AND TELEVISION. NOTABLE ADAPTATIONS INCLUDE:

THEATRICAL PRODUCTIONS

- BROADWAY MUSICALS: THE 1954 BROADWAY MUSICAL "PETER PAN," STARRING MARY MARTIN, BECAME A CLASSIC, POPULARIZING SONGS LIKE "I GOTTA CROW" AND "NEVER NEVER LAND."
- REVIVALS: VARIOUS REVIVALS AND ADAPTATIONS HAVE CONTINUED TO EXPLORE THE STORY'S THEMES, OFTEN INTEGRATING MODERN INTERPRETATIONS WHILE REMAINING TRUE TO BARRIE'S ORIGINAL VISION.

FILM AND TELEVISION

- ANIMATED CLASSICS: DISNEY'S 1953 ANIMATED FILM "PETER PAN" INTRODUCED BARRIE'S TALE TO A NEW GENERATION, FEATURING MEMORABLE SONGS AND CHARACTERS THAT BECAME ICONIC.
- LIVE-ACTION FILMS: SEVERAL LIVE-ACTION ADAPTATIONS, SUCH AS "HOOK" (1991) DIRECTED BY STEVEN SPIELBERG AND "PAN" (2015), HAVE REIMAGINED THE STORY, EXPLORING DIFFERENT FACETS OF PETER'S CHARACTER AND THE IMPLICATIONS OF GROWING UP.

LITERARY INTERPRETATIONS

- NOVELS AND RETELLINGS: NUMEROUS AUTHORS HAVE PENNED THEIR OWN INTERPRETATIONS OF PETER PAN, EXPLORING THEMES OF NOSTALGIA, LOSS, AND THE COMPLEXITIES OF CHILDHOOD. NOTABLE EXAMPLES INCLUDE "PETER AND THE STARCATCHERS" BY DAVE BARRY AND RIDLEY PEARSON, WHICH SERVES AS A PREQUEL TO BARRIE'S ORIGINAL TALE.

THE ENDURING LEGACY OF PETER PAN

JAMES M. BARRIE'S "PETER PAN" HAS LEFT AN INDELIBLE MARK ON LITERATURE AND POPULAR CULTURE. ITS EXPLORATION OF CHILDHOOD AND THE DESIRE TO ESCAPE THE BURDENS OF ADULTHOOD CONTINUES TO RESONATE WITH AUDIENCES TODAY. THE STORY HAS INSPIRED COUNTLESS CREATORS AND REMAINS RELEVANT IN DISCUSSIONS ABOUT THE NATURE OF CHILDHOOD, IMAGINATION, AND THE PASSAGE OF TIME.

CULTURAL IMPACT

- PSYCHOANALYSIS AND LITERATURE: THE CHARACTER OF PETER PAN HAS BEEN ANALYZED THROUGH VARIOUS LENSES, INCLUDING PSYCHOANALYSIS, HIGHLIGHTING THE PSYCHOLOGICAL IMPLICATIONS OF REFUSING TO GROW UP.
- MERCHANDISING AND THEME PARKS: THE POPULARITY OF PETER PAN HAS LED TO EXTENSIVE MERCHANDISING, INCLUDING TOYS, CLOTHING, AND THEMED ATTRACTIONS IN AMUSEMENT PARKS, FURTHER SOLIDIFYING ITS STATUS AS A CULTURAL PHENOMENON.

CONCLUSION

IN CONCLUSION, **JAMES M. BARRIE PETER PAN** IS A NARRATIVE THAT TRANSCENDS TIME, INVITING READERS AND AUDIENCES TO REFLECT ON THEIR OWN CHILDHOODS AND THE INEVITABLE JOURNEY INTO ADULTHOOD. THROUGH ITS RICH CHARACTERS, ENCHANTING SETTINGS, AND PROFOUND THEMES, BARRIE'S MASTERPIECE CONTINUES TO INSPIRE, ENTERTAIN, AND PROVOKE THOUGHT, ENSURING THAT THE MAGIC OF PETER PAN WILL ENDURE FOR GENERATIONS TO COME. WHETHER THROUGH STAGED PERFORMANCES, ANIMATED FILMS, OR LITERARY ADAPTATIONS, THE ESSENCE OF NEVERLAND—WHERE IMAGINATION REIGNS SUPREME—REMAINS A CHERISHED PART OF OUR CULTURAL HERITAGE.

FREQUENTLY ASKED QUESTIONS

WHO IS JAMES M. BARRIE?

JAMES M. BARRIE WAS A SCOTTISH AUTHOR AND PLAYWRIGHT, BEST KNOWN FOR CREATING THE CHARACTER PETER PAN, A BOY WHO NEVER GROWS UP.

WHAT INSPIRED JAMES M. BARRIE TO WRITE 'PETER PAN'?

BARRIE WAS INSPIRED BY HIS RELATIONSHIP WITH THE LLEWELYN DAVIES FAMILY, PARTICULARLY THE BOYS, AND THEIR SHARED ADVENTURES, WHICH FUELED HIS IMAGINATION ABOUT CHILDHOOD AND THE IDEA OF NEVER GROWING UP.

WHEN WAS 'PETER PAN' FIRST PUBLISHED?

THE PLAY 'PETER PAN' WAS FIRST PERFORMED IN 1904, AND THE NOVEL 'PETER AND WENDY' WAS PUBLISHED LATER IN 1911.

WHAT ARE THE MAIN THEMES OF 'PETER PAN'?

THE MAIN THEMES OF 'PETER PAN' INCLUDE THE INNOCENCE OF CHILDHOOD, THE DESIRE FOR ETERNAL YOUTH, THE COMPLEXITIES OF GROWING UP, AND THE IMPORTANCE OF IMAGINATION AND ADVENTURE.

WHAT IS THE SIGNIFICANCE OF NEVERLAND IN 'PETER PAN'?

NEVERLAND REPRESENTS A MAGICAL REALM WHERE CHILDREN CAN ESCAPE THE RESPONSIBILITIES OF ADULTHOOD, EMBODYING THE FREEDOM AND CREATIVITY OF CHILDHOOD.

HOW HAS 'PETER PAN' INFLUENCED POPULAR CULTURE?

PETER PAN HAS SIGNIFICANTLY INFLUENCED POPULAR CULTURE THROUGH VARIOUS ADAPTATIONS IN FILM, THEATER, LITERATURE, AND MERCHANDISE, BECOMING A SYMBOL OF CHILDHOOD AND ADVENTURE.

WHAT IS THE CHARACTER OF CAPTAIN HOOK'S ROLE IN 'PETER PAN'?

CAPTAIN HOOK SERVES AS THE MAIN ANTAGONIST IN 'PETER PAN', REPRESENTING THE FEARS AND CHALLENGES OF GROWING UP, AS WELL AS THE CONFLICTS BETWEEN CHILDHOOD INNOCENCE AND ADULT RESPONSIBILITIES.

WHY IS PETER PAN CONSIDERED A TIMELESS CHARACTER?

PETER PAN IS CONSIDERED TIMELESS BECAUSE HE EMBODIES THE UNIVERSAL THEMES OF CHILDHOOD, ADVENTURE, AND THE TENSION BETWEEN THE DESIRE TO GROW UP AND THE LONGING TO REMAIN A CHILD, RESONATING WITH AUDIENCES OF ALL AGES.

Find other PDF article:

<https://soc.up.edu.ph/35-bold/pdf?dataid=Mjk54-2626&title=just-another-hero-sharon-draper.pdf>

[James M Barrie Peter Pan](#)

APOD: 2010 July 2 - Galaxies on a String

Explanation: Galaxies NGC 5216 (top) and NGC 5218 really do look like they are connected by a string. Of course, that string is a cosmic trail of gas, dust, and stars about 22,000 light-years long.

Arp 104 - Wikipedia

Arp 104, also known as Keenan's system, is entry 104 in Halton Arp 's Atlas of Peculiar Galaxies catalog for spiral galaxy NGC 5216 and globular galaxy NGC 5218. [2] The two galaxies are ...

[NGC 5216 - Elliptical Galaxy in Ursa Major - TheSkyLive](#)

NGC 5216 is a Elliptical Galaxy in the Ursa Major constellation. NGC 5216 is situated close to the northern celestial pole and, as such, it is visible for most part of the year from the northern ...

Keenan's System - Astronomy Magazine

Jun 23, 2025 · One such interacting galaxy pair in Ursa Major is called Keenan's System, or alternatively, NGC 5216 and NGC 5218, or Arp 104. Keenan's System is named for the ...

NGC 5216 Galaxy (UGC 8528) Facts & Distance - Universe Guide

NGC 5216 (NGC5216) is a seyfert 2 galaxy that has a distance from Earth of 202,706,188.74 light years. It can be found in the constellation of Ursa Major.

NGC 5216 and NGC 5218 (Keenan's System) - Cloudy Nights

Jun 24, 2025 · NGC 5216 and NGC 5218 (Keenan's System) - posted in Deep Sky Observing: Keenan's System is a faint pair of interacting galaxies in Ursa Major, joined by a 22,000-light ...

[NGC 5216 Keenan's System \(John Richards\) - AstroBin](#)

This target is the pairing of an elliptical NGC 5216 and barred spiral galaxy NGC 5218. Both were discovered by William Herschel in 1790.

NGC 5216 - elliptical galaxy. Description NGC 5216: - kosmoved.ru

In this version of the NGC catalog used by NASA imagery, ngcicproject.org and other sources. The pictures in the places of their original placement referred to as free of licensing restrictions.

NGC 5216 - ADAM BLOCK - FINE ASTROPHOTOGRAPHY

There is a point in the simulation where the resulting pattern looks (to my eye) *very* similar to NGC 5216 (Keenan system). Please see this image. Granted that the physics is correct, it is ...

NGC 5216 — Wikipédia

NGC 5216 est une vaste (?) galaxie elliptique située dans la constellation de la Grande Ourse. NGC 5216 a été découverte par l'astronome germano - britannique William Herschel en 1790.

Gmail - Email from Google

Gmail is email that's intuitive, efficient, and useful. 15 GB of storage, less spam, and mobile access.

Gmail - Google Accounts

Gmail is email that's intuitive, efficient, and useful. 15 GB of storage, less spam, and mobile access.

[Sign in to Gmail - Computer - Gmail Help - Google Help](#)

Sign in to Gmail To open Gmail, you can sign in from a computer or add your account to the Gmail app on your phone or tablet. Once you're signed in, open your inbox to check your...

Sign in to Gmail

Sign in to Gmail To open Gmail, you can log in from a computer, or add your account to the Gmail app on your phone or tablet. Once you've signed in, check your email by opening your...

Gmail

Gmail is email that's intuitive, efficient, and useful. 15 GB of storage, less spam, and mobile access.

Sign in - Google Accounts

Not your computer? Use a private browsing window to sign in. Learn more about using Guest mode

Sign in - Google Accounts

Sign in to your Google Account securely to access Gmail and other services.

Google Accounts

Access your Google Account for Gmail and other services securely with ease.

Gmail - Google Accounts

Gmail ist ein intuitiver, effizienter und nützlicher E-Mail-Dienst mit 15 GB Speicherplatz, weniger Spam und mobilem Zugriff.

Gmail Help - Google Help

Official Gmail Help Center where you can find tips and tutorials on using Gmail and other answers to frequently asked questions.

Explore the enchanting world of James M. Barrie's Peter Pan. Discover its timeless themes

[Back to Home](#)