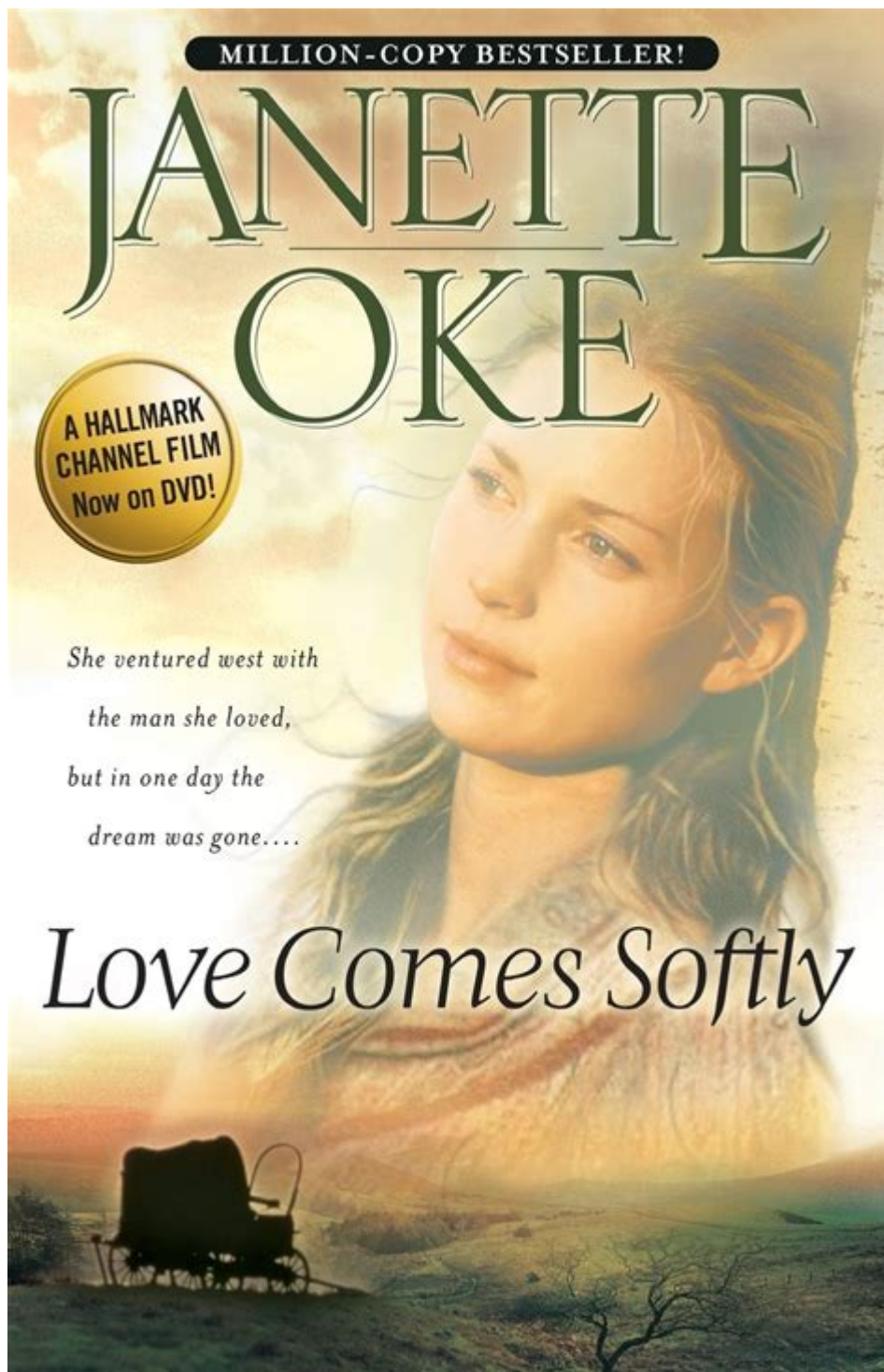


# Janette Oke Love Comes Softly Series



**Janette Oke's Love Comes Softly Series** is a beloved collection of novels that has captured the hearts of readers since its debut in the mid-20th century. Renowned for her ability to weave intricate tales of love, faith, and resilience, Janette Oke has established herself as a pioneer in the genre of inspirational fiction. The "Love Comes Softly" series explores profound themes of love and family against the backdrop of the rugged American frontier, creating a rich tapestry of historical and emotional depth. This article delves into the intricacies of the series, its characters, themes, and its impact on readers and the literary world.

# Overview of the Series

The "Love Comes Softly" series consists of several novels that span generations, detailing the lives of the Davis family and their experiences as pioneers in the early 19th century. The series begins with the story of a young woman named Clark Davis and his journey through love, loss, and faith. The first book, "Love Comes Softly," introduces readers to Clark's struggles and the unexpected turns his life takes.

## List of Novels in the Series

1. Love Comes Softly (1979)
2. Love's Enduring Promise (1980)
3. Love's Long Journey (1981)
4. Love's Abiding Joy (1982)
5. Love's Unending Legacy (1990)
6. Love's Continuing Legacy (2000)

Each book builds upon the last, exploring the evolving dynamics of family and relationships while maintaining a focus on the themes of faith and perseverance.

## Plot Summary

The series begins with "Love Comes Softly," where readers are introduced to the protagonist, Marty Claridge. Following a tragic event that leaves her widowed in a remote wilderness, Marty must navigate her grief and the challenges of survival. In a serendipitous twist, she finds herself marrying a man named Clark Davis, who is also coping with loss. Their journey begins with a marriage of convenience that gradually blossoms into love.

As the series progresses through each novel, the narrative transitions to the lives of Marty and Clark's children, focusing on their relationships, struggles, and growth. Each installment brings new characters and challenges, allowing readers to witness the evolution of the Davis family over time.

## Character Analysis

The characters in the "Love Comes Softly" series are richly developed, each embodying distinct qualities that resonate with readers. Here are some of the key characters:

### Marty Claridge Davis

Marty is the heart of the series, representing strength and resilience. She evolves from a young, grieving widow to a devoted wife and mother. Her journey reflects the struggles of

many women of her time, balancing love and responsibility while holding onto her faith.

## **Clark Davis**

Clark serves as a steadfast partner to Marty, embodying the virtues of patience and understanding. His character demonstrates the importance of commitment and faith in nurturing a relationship. His bond with Marty deepens as they face adversities together.

## **Missie Davis**

The couple's daughter, Missie, becomes a focal point in the later novels. Her character explores themes of independence and the pursuit of love. As she navigates her own relationships, readers witness the generational shifts in values and societal expectations.

## **Other Supporting Characters**

The series features various supporting characters, each contributing to the rich narrative tapestry:

- Luke: A romantic interest for Missie who faces his own challenges.
- Grandma: A matriarchal figure representing wisdom and tradition.
- Friends and Neighbors: Various characters who embody the spirit of community, highlighting the importance of support systems in difficult times.

## **Themes Explored**

Janette Oke's "Love Comes Softly" series is steeped in themes that resonate deeply with readers. Some of the most prominent themes include:

### **Love and Relationships**

At its core, the series is a celebration of love in its many forms—romantic love, familial love, and the love that develops between friends. Oke illustrates how love can grow out of unexpected circumstances and evolve over time.

### **Faith and Spirituality**

Faith plays a pivotal role throughout the series. Characters often turn to their beliefs in times of hardship, providing a framework for hope and resilience. The narrative encourages readers to reflect on their own faith journeys.

## **Resilience and Perseverance**

The pioneering spirit of the characters highlights the importance of resilience. Faced with numerous challenges—loss, hardship, and societal expectations—characters demonstrate perseverance and the ability to overcome adversity.

## **Family and Community**

The series emphasizes the significance of family bonds and community support. As characters face trials, the strength they draw from each other illustrates the impact of a tight-knit community in fostering growth and healing.

## **Impact and Legacy**

The "Love Comes Softly" series has left an indelible mark on the world of inspirational fiction. Janette Oke's storytelling resonates with readers across generations, fostering a deep connection to the characters and their journey. The series has inspired adaptations, including a popular film series that brings the characters to life on screen.

## **Adaptations**

The novels' popularity led to a series of television films, beginning with the "Love Comes Softly" film released in 2003. The films, while maintaining the essence of the books, introduced the story to a broader audience, sparking renewed interest in Oke's works. Each film adaptation captures the emotional depth and themes present in the novels, making them accessible to those who may not have read the books.

## **Readers' Reception**

The "Love Comes Softly" series has garnered a dedicated following, with readers praising its heartfelt narratives and relatable characters. Many fans appreciate how Oke addresses complex issues with sensitivity and grace, making the series a staple in the inspirational genre.

## **Conclusion**

Janette Oke's "Love Comes Softly" series remains a timeless exploration of love, faith, and resilience. Through the eyes of Marty, Clark, and their family, readers embark on a journey that transcends time and space, resonating with universal themes that speak to the human experience. The series not only entertains but also inspires, encouraging individuals to

embrace the power of love and hope in their own lives. Whether revisiting the novels or experiencing the films, audiences continue to find solace and inspiration in Oke's beautifully woven stories.

## **Frequently Asked Questions**

### **What is the main theme of Janette Oke's 'Love Comes Softly' series?**

The main theme of the 'Love Comes Softly' series revolves around love, faith, family, and the struggles of pioneer life in the early American West.

### **How many books are there in the 'Love Comes Softly' series?**

There are a total of eight books in the 'Love Comes Softly' series.

### **Who are the central characters in the first book of the series?**

The central characters in the first book, 'Love Comes Softly,' are Marty and Clark, who navigate their relationship through hardship and loss.

### **What time period does the 'Love Comes Softly' series take place in?**

The series is set in the mid to late 19th century, during the westward expansion in America.

### **Is 'Love Comes Softly' adapted into any film or TV series?**

Yes, 'Love Comes Softly' was adapted into a popular Hallmark movie in 2003, which was followed by several sequels based on the subsequent books.

### **What are some of the core values depicted in Janette Oke's series?**

Core values depicted in the series include resilience, compassion, strong family bonds, and the importance of faith in overcoming life's challenges.

### **Who is Janette Oke, and what is her significance in literature?**

Janette Oke is a Canadian author known for her inspirational Christian fiction, particularly her pioneering works that have shaped the genre of historical romance.

## How does the character development evolve throughout the series?

Character development in the series evolves through personal growth, overcoming adversity, and the deepening of relationships, particularly through the experiences of love and loss.

## What impact has 'Love Comes Softly' had on readers and writers of Christian fiction?

The series has had a significant impact by popularizing the Christian romance genre and inspiring both readers and aspiring authors with its heartfelt storytelling and themes of faith.

## Are there any spin-off books or related series to 'Love Comes Softly'?

Yes, Janette Oke co-authored a series called 'Return to the Canadian West' that serves as a companion to the 'Love Comes Softly' series, exploring characters and themes further.

Find other PDF article:

<https://soc.up.edu.ph/34-flow/pdf?trackid=naP15-0180&title=jack-frost-a-touch-of-frost.pdf>

## Janette Oke Love Comes Softly Series

### **Iowa Central Community College**

4 days ago · Iowa Central Community College is located in Fort Dodge, IA. With over 100 programs to choose from we're an affordable alternative to a 4 year university at a fraction of ...

#### Admissions - Iowa Central Community College

The Iowa Central Community College Admissions team is here to help your transition into college an easy one.

#### *Iowa Central: Career Option Programs - Iowa Central Community ...*

Iowa Central offers many opportunities for students to get involved. From intramurals to clubs, there's something for everyone. Get more Student Life info here.

#### About Iowa Central Community College

Iowa Central Community College is located in Fort Dodge, IA. With over 100 programs to choose from we're an affordable alternative to a 4 year university at a fraction of the cost.

### **Welcome to TritonPass - Iowa Central Community College**

TritonPass Log In Help TritonPass uses one log in to access Iowa Central's online services such as email, grades, and courses.

## **Iowa Central Community College - Modern Campus Catalog™**

All catalogs © 2025 Iowa Central Community College. Powered by Modern Campus Catalog™.

### **Apply Now! - Iowa Central Community College**

The Iowa Central Community College Admissions team is here to help your transition into college an easy one.

### **Online Learning - Iowa Central Community College**

Iowa Central Community College is located in Fort Dodge, IA. With over 100 programs to choose from we're an affordable alternative to a 4 year university at a fraction of the cost.

### **Calendar - Iowa Central Community College - Modern Campus ...**

TritonPass Iowa Central Academic Catalog Facebook Twitter Linkedin Youtube Instagram Snapchat

### **Administration, Faculty, and Staff - Iowa Central Community ...**

East Campus 2031 Quail Avenue Fort Dodge, IA 50501 800-362-2793 ext. 1293 North Central Career Academy 216 S. Park Avenue Eagle Grove, IA 50533 515-574-1974

### **query - English-Spanish Dictionary - WordReference.com**

See Google Translate's machine translation of 'query'. In other languages: French | Italian | Portuguese | ...

### **Qué es una Query - Definición, significado y para qué sirve**

Una query es una pregunta o consulta que se realiza para obtener información. En el contexto de internet, ...

### **QUERY | traducir al español - Cambridge Dictionary**

traducir QUERY: pregunta, duda, cuestionar, preguntar, pregunta [feminine, singular], consulta ...

### **query - Traducción al español - Linguee**

Muchos ejemplos de oraciones traducidas contienen “query” – Diccionario español-inglés y buscador de traducciones en ...

### *¿Qué es una query? Definición, significado en SEO y ejemplos*

Sep 12, 2023 · ¿Qué es una query? Una query es el término o concepto que escribimos en Google u otros ...

Explore Janette Oke's beloved "Love Comes Softly" series

[Back to Home](#)