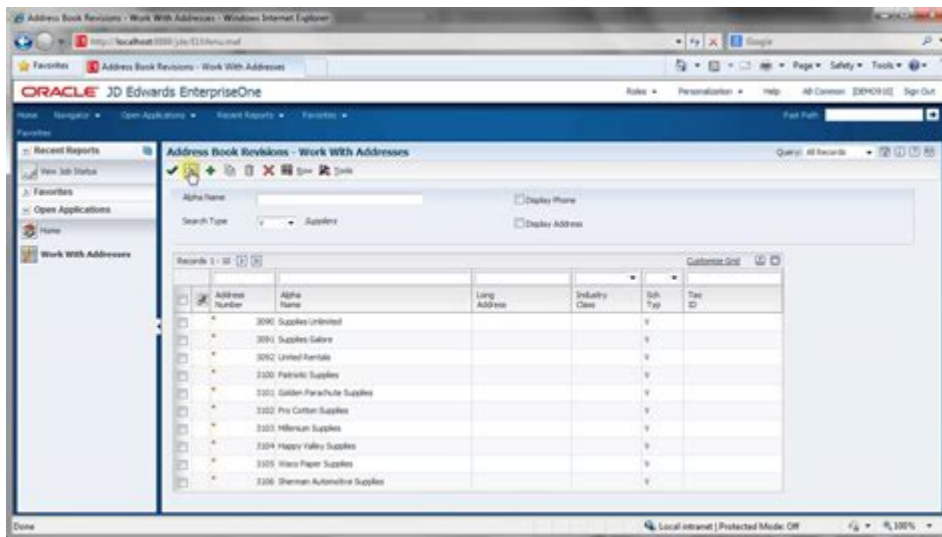


Jd Edwards Enterpriseone Training



JD Edwards EnterpriseOne training is an essential component for organizations aiming to leverage the full potential of JD Edwards EnterpriseOne software. This integrated suite of applications, designed to manage business processes across various industries, provides significant advantages when implemented and utilized effectively. Understanding how to navigate and utilize the software can lead to enhanced productivity, improved decision-making, and overall business growth. This article delves into the various aspects of JD Edwards EnterpriseOne training, including its importance, training methods, key areas of focus, and the benefits of well-trained employees.

Understanding JD Edwards EnterpriseOne

JD Edwards EnterpriseOne is an enterprise resource planning (ERP) software solution developed by Oracle. It provides tools for managing financials, project management, supply chain, manufacturing, and human resources. The software is designed to support various industries, including manufacturing, distribution, construction, and real estate.

Key Features of JD Edwards EnterpriseOne

- **Modular Architecture:** JD Edwards EnterpriseOne consists of various modules that can be implemented based on the specific needs of the organization.
- **User-Friendly Interface:** The software offers a graphical user interface that simplifies navigation and enhances user experience.
- **Mobile Capabilities:** JD Edwards EnterpriseOne supports mobile access, enabling users to access information on the go.
- **Strong Reporting and Analytics:** The software includes robust reporting and analytical tools for better business intelligence.

The Importance of JD Edwards EnterpriseOne Training

Training is crucial for organizations implementing JD Edwards EnterpriseOne for several reasons:

1. **Maximizing Software Potential:** Proper training ensures that employees can utilize the software to its fullest potential, which can lead to improved efficiency and productivity.
2. **Reducing Errors:** Well-trained employees are less likely to make mistakes, which can reduce costly errors in data entry, reporting, and other business processes.
3. **Enhancing Decision-Making:** Training equips employees with the knowledge to analyze data effectively, leading to informed decision-making.
4. **Improving Employee Satisfaction:** Employees who receive adequate training are typically more confident in their roles, leading to increased job satisfaction and retention.

Training Methods for JD Edwards EnterpriseOne

Organizations can choose from various training methods to ensure their employees are proficient in JD Edwards EnterpriseOne. The selection of training methods often depends on the organization's size, budget, and specific needs.

1. Instructor-Led Training (ILT)

Instructor-led training involves a trainer delivering information in a classroom setting. This method is beneficial for organizations with a larger number of employees needing training. Benefits of ILT include:

- **Interactive Learning:** Employees can ask questions and receive immediate feedback.
- **Networking Opportunities:** Participants can learn from each other's experiences.
- **Structured Curriculum:** A well-defined training program can be followed.

2. Online Training

Online training offers flexibility, allowing employees to learn at their own pace. Organizations can use various online platforms, such as webinars, e-learning modules, or virtual classrooms. Key advantages include:

- **Accessibility:** Employees can access training materials from anywhere at any time.
- **Cost-Effective:** Reduces travel and venue costs.
- **Self-Paced Learning:** Employees can learn according to their schedules.

3. Hands-On Training

Hands-on training involves practical exercises where employees can work directly within the JD Edwards EnterpriseOne system. This method reinforces learning by allowing employees to practice what they have learned. Benefits include:

- Real-World Application: Employees can apply training in a controlled environment.
- Immediate Feedback: Trainers can provide feedback as employees work through exercises.

4. Certification Programs

Certification programs can be beneficial for employees looking to validate their knowledge and skills in JD Edwards EnterpriseOne. Obtaining a certification can enhance career prospects and demonstrate a commitment to professional development.

Key Areas of Focus in JD Edwards EnterpriseOne Training

Training programs for JD Edwards EnterpriseOne should cover several key areas to ensure comprehensive understanding and application of the software.

1. Navigation and User Interface

Employees should become familiar with the software's interface, including:

- Menu Navigation: Understanding how to navigate through various modules.
- Search Functions: Learning how to effectively search for records and information.

2. Core Modules Overview

Training should provide an overview of the core modules relevant to the organization, such as:

- Financial Management: Managing general ledger, accounts payable, and accounts receivable.
- Supply Chain Management: Understanding inventory management, procurement, and order processing.
- Human Capital Management: Managing employee records, payroll, and performance management.

3. Reporting and Analytics

Employees should learn how to use reporting tools to generate insights, including:

- Creating Reports: Understanding how to design and run reports.
- Data Analysis: Learning how to analyze data for decision-making.

4. Troubleshooting and Support

Training should also cover basic troubleshooting techniques and how to access support resources when needed. Employees should know:

- Common Issues: Identifying and resolving common problems.
- Support Channels: Knowing how to contact support or access online resources.

Benefits of Well-Trained Employees

Organizations that invest in JD Edwards EnterpriseOne training reap numerous benefits:

- Increased Efficiency: Employees are more productive when they are proficient in the software.
- Cost Savings: Reduced errors and improved processes can lead to significant cost savings.
- Enhanced Collaboration: Employees can work together more effectively when they understand the system.
- Competitive Advantage: Organizations with well-trained staff can respond more swiftly to market changes and customer needs.

Conclusion

In conclusion, JD Edwards EnterpriseOne training is a vital investment for organizations looking to fully capitalize on the capabilities of this robust ERP software. By offering a combination of instructor-led training, online learning, hands-on experience, and certification programs, companies can ensure that their employees are well-equipped to navigate and utilize the software effectively. A well-trained workforce not only leads to improved operational efficiency but also fosters a culture of continuous learning and adaptability within the organization. As businesses continue to evolve and face new challenges, the significance of comprehensive JD Edwards EnterpriseOne training will only grow, solidifying its role as a key driver of success in today's competitive landscape.

Frequently Asked Questions

What is JD Edwards EnterpriseOne training?

JD Edwards EnterpriseOne training involves learning how to use the JD Edwards software suite for enterprise resource planning (ERP), including modules for finance, manufacturing, distribution, and project management.

What are the key benefits of JD Edwards EnterpriseOne training?

Key benefits include improved user proficiency, enhanced productivity, better decision-making through data analysis, and streamlined business processes.

Who should consider taking JD Edwards EnterpriseOne training?

Professionals in finance, supply chain management, human resources, IT support, and project management, as well as new employees at companies using JD Edwards, should consider this training.

How can I find JD Edwards EnterpriseOne training courses?

You can find training courses through Oracle's official website, authorized training partners, online learning platforms, and local universities that offer ERP training.

What formats are available for JD Edwards EnterpriseOne training?

Training is available in various formats, including in-person classes, virtual instructor-led training, self-paced online courses, and hands-on workshops.

Is certification available for JD Edwards EnterpriseOne training?

Yes, Oracle offers certification programs for JD Edwards EnterpriseOne that validate your skills and knowledge, making you more competitive in the job market.

How long does it typically take to complete JD Edwards EnterpriseOne training?

The duration of JD Edwards EnterpriseOne training varies depending on the course and format, but it generally ranges from a few days for introductory courses to several weeks for more comprehensive programs.

Find other PDF article:

Jd Edwards Enterpriseone Training

HC JD OC [EnterpriseOne](#) ... - [JD Edwards](#)

EnterpriseOne HC JD OC [EnterpriseOne](#) 1. **HC** - **

EnterpriseOne - [JD Edwards](#)

EnterpriseOne app [EnterpriseOne](#) [JD Edwards](#) ...

EnterpriseOne - [JD Edwards](#)

Sep 17, 2018 · [EnterpriseOne](#) [JD Edwards](#) 211 [EnterpriseOne](#) ...

EnterpriseOne - [JD Edwards](#)

EnterpriseOne [EnterpriseOne](#) USDT USDC [EnterpriseOne](#) ...

JD [EnterpriseOne](#) - [JD Edwards](#)

EnterpriseOne JD [EnterpriseOne](#) [JD Edwards](#) JD ...

HC JD OC [EnterpriseOne](#) ... - [JD Edwards](#)

EnterpriseOne HC JD OC [EnterpriseOne](#) 1. **HC** - **

EnterpriseOne - [JD Edwards](#)

EnterpriseOne app [EnterpriseOne](#) [JD Edwards](#) “[EnterpriseOne](#)” [EnterpriseOne](#) app ...

EnterpriseOne - [JD Edwards](#)

Sep 17, 2018 · [EnterpriseOne](#) [JD Edwards](#) 211 [EnterpriseOne](#) 300 [EnterpriseOne](#) 300 600 [EnterpriseOne](#) ...

EnterpriseOne - [JD Edwards](#)

EnterpriseOne [EnterpriseOne](#) USDT USDC [EnterpriseOne](#) ...

JD [EnterpriseOne](#) - [JD Edwards](#)

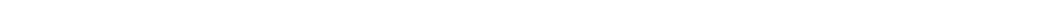

EnterpriseOne JD [EnterpriseOne](#) [JD Edwards](#) JD [EnterpriseOne](#) [JD Edwards](#) ...

EnterpriseOne jd - [JD Edwards](#)

EnterpriseOne jd [EnterpriseOne](#) [JD Edwards](#) JD [EnterpriseOne](#) [JD Edwards](#) ...

EnterpriseOne - [JD Edwards](#)

EnterpriseOne [EnterpriseOne](#) [JD Edwards](#) [EnterpriseOne](#) [JD Edwards](#) ...

Oct 16, 2024 · 
 ...

Oct 12, 2022 · [○○○○○○○○ JC○○○○○○○○ J.C.STAFF \(○○○○○○\) JK○○○○○○○○○○○○○○○○ JB○○○ Jet Brains ○○○○○ JS○○○ ...](#)

40~50

[Back to Home](#)