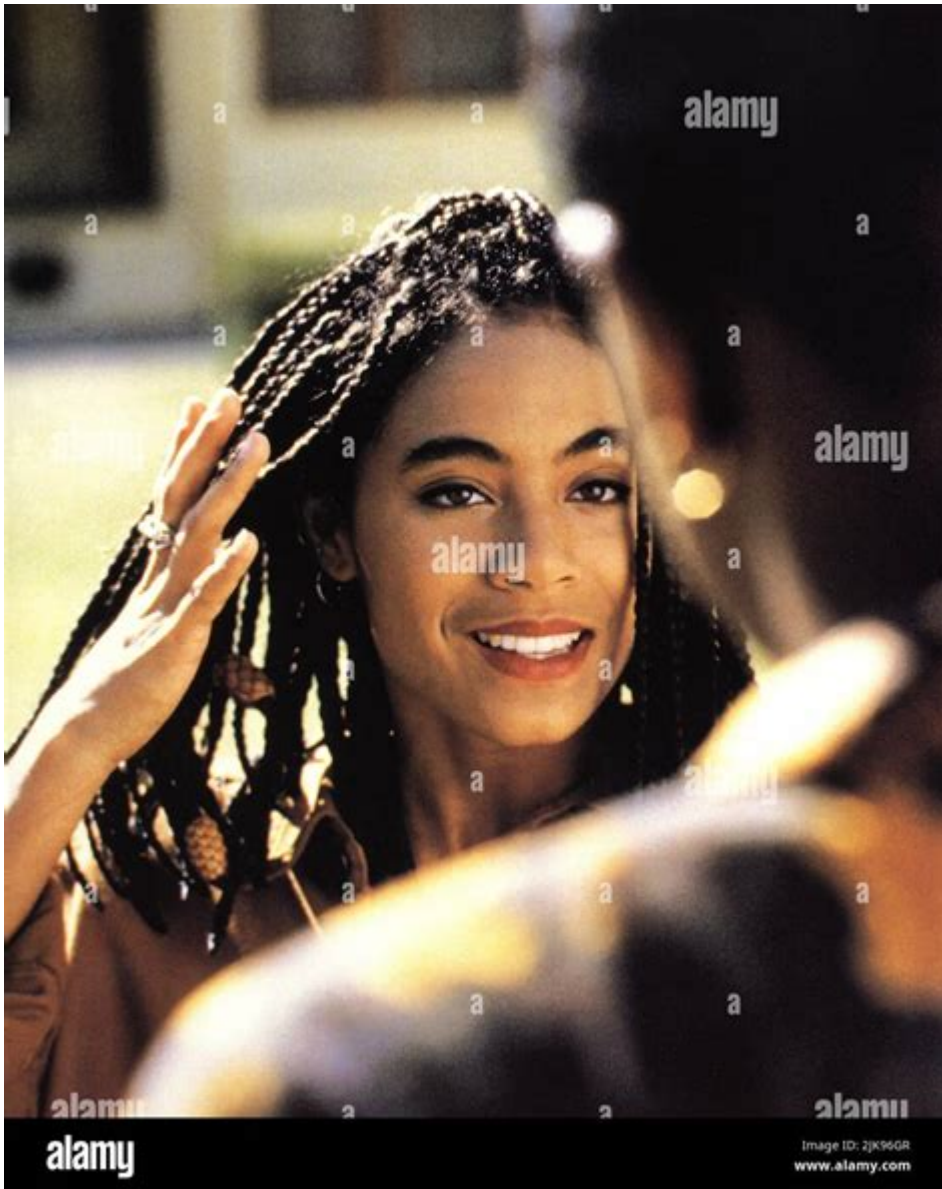


Jada Pinkett Smith In Menace To Society



Jada Pinkett Smith in Menace to Society is a significant topic that resonates with fans of 90s cinema and those who appreciate the evolution of actors in Hollywood. Released in 1993, *Menace II Society* is a gripping crime drama that explores the harsh realities of life in the inner city. Jada Pinkett Smith's role in this film not only showcased her talent but also marked an important milestone in her acting career. This article delves into her character, the film's impact, and how it fits into Pinkett Smith's broader career trajectory.

Overview of Menace II Society

Menace II Society was directed by the Hughes Brothers, Allen and Albert, and is widely regarded as a classic in the genre of urban cinema. The film tells

the story of Caine Lawson, a young man navigating the violent streets of Los Angeles. It examines themes of violence, poverty, and the struggle for survival, set against a backdrop of systemic issues affecting communities of color.

The film's raw portrayal of life in the inner city was groundbreaking, offering an unfiltered look at the consequences of crime and the impact of environment on youth.

Plot Summary

At its core, Menace II Society follows:

1. Caine Lawson - A young man who is influenced by his surroundings and the people in his life.
2. O-Dog - Caine's friend, who embodies the dangers of street life.
3. Ronnie - A pivotal character played by Jada Pinkett, who represents hope and the possibility of change.

The narrative takes viewers through Caine's tumultuous life, filled with choices that lead to dire consequences, ultimately questioning the cycle of violence and the pursuit of a better life amidst chaos.

Jada Pinkett Smith's Role as Ronnie

In Menace II Society, Jada Pinkett Smith portrays Ronnie, a strong and determined woman who plays a crucial role in Caine's life. Her character brings emotional depth to the story and serves as a contrast to the male-dominated narrative of violence and crime.

The Character of Ronnie

Ronnie is significant for several reasons:

- Empowerment: As a female character in a predominantly male cast, Ronnie embodies strength and resilience. She is not merely a love interest but a woman with her own motivations and struggles.
- Romantic Interest: Caine's relationship with Ronnie adds a layer of complexity to his character. It highlights his internal conflict between love and the violent lifestyle he leads.
- Catalyst for Change: Ronnie represents the potential for Caine to choose a different path. Her presence in his life serves as a reminder of what could be, challenging him to reconsider his choices.

The Impact of Jada Pinkett Smith's Performance

Jada Pinkett Smith's portrayal of Ronnie was not only pivotal to the film's narrative but also marked a significant moment in her career.

Critical Reception

- **Authenticity:** Critics praised Pinkett Smith for her authentic performance, which brought a realness to the character that resonated with audiences.
- **Breaking Stereotypes:** Ronnie's character helped to challenge the stereotypical roles often assigned to women in films, particularly within the genre of crime dramas.
- **Career Launchpad:** This role was instrumental in establishing Pinkett Smith as a talented actress capable of handling complex characters, leading to more opportunities in Hollywood.

Cultural Significance and Legacy

Menace II Society has left a lasting impact on cinema, influencing how stories about urban life are told. Jada Pinkett Smith's role in the film contributes to its legacy in several ways.

Reflection of Society

The film's portrayal of life in the inner city remains relevant today, tackling issues like:

- **Systemic Racism:** Highlighting the barriers faced by marginalized communities.
- **Violence:** Addressing the cycle of violence that affects youth.
- **Choices and Consequences:** Exploring how choices shape one's future, a theme embodied in Caine's journey.

Influence on Future Projects

Jada Pinkett Smith's performance in Menace II Society paved the way for her future roles, where she often took on characters that challenged societal norms and showcased strong women. This includes:

- **The Matrix Series:** Playing Niobe, a character who embodies strength and leadership.
- **Girls Trip:** A comedic role that highlights friendship and empowerment among

women.

Conclusion

Jada Pinkett Smith in Menace to Society is a crucial part of both her personal career journey and the film's historical context. Her portrayal of Ronnie brought depth to the narrative and demonstrated her ability to tackle complex roles. The film itself remains a powerful commentary on societal issues, and Pinkett Smith's involvement only enhances its significance.

As audiences continue to discover or revisit *Menace II Society*, the impact of Jada Pinkett Smith's performance serves as a reminder of the importance of storytelling that reflects real-life challenges and the strength of individuals within those narratives. Her role in this iconic film underscores her growth as an actress and her commitment to portraying nuanced characters, making her a lasting figure in Hollywood's landscape.

Frequently Asked Questions

What role did Jada Pinkett Smith play in 'Menace II Society'?

Jada Pinkett Smith played the character Ronnie, who is the love interest of the main character, Cain.

How did Jada Pinkett Smith's role in 'Menace II Society' impact her career?

Her performance in 'Menace II Society' helped establish her as a talented actress in Hollywood and opened doors for future roles in film and television.

What themes does Jada Pinkett Smith's character address in 'Menace II Society'?

Ronnie's character addresses themes of survival, loyalty, and the struggles of urban life, highlighting the challenges faced by individuals in difficult circumstances.

How was Jada Pinkett Smith's performance received by critics in 'Menace II Society'?

Critics praised her performance for its depth and authenticity, noting her ability to portray a strong, complex female character in a gritty narrative.

What year was 'Menace II Society' released, featuring Jada Pinkett Smith?

Menace II Society was released in 1993.

Did Jada Pinkett Smith have any memorable quotes in 'Menace II Society'?

Yes, Ronnie has several memorable lines that reflect her struggles and resilience, particularly in her relationships and perspective on life.

What was significant about 'Menace II Society' in terms of representation of Black culture?

Menace II Society is significant for its raw and unfiltered portrayal of life in South Central Los Angeles, addressing issues such as violence, poverty, and systemic racism, with Jada Pinkett Smith's character adding to the narrative of female resilience.

Did Jada Pinkett Smith collaborate with any notable filmmakers on 'Menace II Society'?

Yes, she worked with the Hughes Brothers, who directed the film, and their collaboration contributed to the film's impactful storytelling and visual style.

Find other PDF article:

<https://soc.up.edu.ph/33-gist/Book?ID=TDk71-7638&title=introduction-to-aerospace-structural-analysis.pdf>

Jada Pinkett Smith In Menace To Society

Best Study Lounges for Students in Metro Manila - Spot.ph

Mar 1, 2019 · We round up 10 study lounges and co-working spaces offering everything you'll need for a study session.

Study Corner Coworking Space - Facebook

□ Study Corner Coworking Space □ Hello Study Mates! If you are looking for a place to study, you are in the right corner. We are open today (Wednesday).

Studyounge - social study app

Boost your focus by 3x with others! Studyounge is a productivity social app that helps you focus on the studying with other users.

StudyStream | Study With Strangers | Study Together

Our app has everything you need to manage your workload and have more efficient study sessions. Join the world's #1 online community of students. 24/7 Focus Rooms available for ...

5 U-Belt Study Hubs to Visit During Your Hell Week

Dec 5, 2023 · Whether your visit is for meetings, study, or quiet time, they have different zones curated for your needs. When things get a little tough during your cramming sesh, you can ...

LIST: The Best Study Hubs Along University Belt - Candymag.com

May 2, 2023 · These lounges are perfect places to get your work done when you need a peaceful spot to study alone or a space to collaborate with others on your school projects.

Beyond Bedrooms and Bookshelves: A Guide to the Best Study ...

This is why one should consider going out of his or her comfort zone and study outside. The Metro now offers a multitude of cafes, study lounges, co-working spaces, and collaboration hubs.

Purple Desk Study Lounge & Coworking Space - Philippines

With a perfect blend of quiet study areas and collaborative coworking spaces, Purple Desk caters to every need. Enjoy high-speed internet, ergonomic furniture, private rooms for group ...

The best study lounges in Manila that we truly miss

Jan 18, 2022 · If you miss your favorite study spots as much as I do, let's go back to some of the best we have in Manila and maybe get some ideas for where to go next time when things get ...

5 Study-Friendly Cafes in Manila - Free Wi-Fi, Sockets | Dormy

5 days ago · Luckily, there are still coffee shops out there that are suitable for reviewing and doing projects and homeworks - with free Wi-Fi and sockets for charging! Here are 5 coffee shops in ...

Código B1638 - ¿Qué significa? Causas + soluciones • OBD2

¿Qué significa el código DTC B1638? El código de falla B1638 se refiere a un cortocircuito en el circuito derecho del espejo del conductor a tierra. Este código indica que hay un problema ...

Correo Vicente Lopez (Sucursal) (B1638) Avenida Del Libertador ...

Horarios de apertura de Correo Vicente Lopez (Sucursal) (B1638) en Avenida Del Libertador N° 1202. Ubicación, número de teléfono, horario de atención, servicios disponibles y otras oficinas ...

Código de falla B1638: Qué significa y cómo solucionarlo

El código de falla B1638 es un código de diagnóstico que se utiliza en los sistemas de control del automóvil. Este código se refiere a un problema en el circuito del actuador de freno y ...

CÓDIGO B1638 (todas las marcas) | Síntomas y Soluciones

El código B1638 es común en: Chrysler 300, Chrysler PT Cruiser, Dodge Ram 2500, Jeep Wrangler, Lexus ES, Lexus IS, Scion, Toyota Camry y otras marcas.

▯ Código B1638 [OBD2] | Descripción, Causas y Soluciones

En esta ocasión, nos enfocaremos en el código B1638, un diagnóstico de problemas que merece una atención meticulosa. Exploraremos la descripción precisa del código, su significado, los ...

Códigos Postales Vicente López, Vicente López, Buenos Aires | 2025

El código postal de Vicente López en Vicente López es B1638 El código postal B1638 también abarca los siguientes asentamientos: Carapachay , Florida , Florida Oeste , La Lucila , Munro , ...

CÓDIGO B1638: Causas, SÍNTOMAS y SOLUCIONES Efectivas (2025)

5 days ago · El código B1638 es un código de diagnóstico que indica un problema en el sensor de ocupación del asiento del pasajero. Este código puede resultar crítico, ya que afecta la ...

B1638 - Código de falla OBD2

El código DTC B1638 OBD2 para determinadas marcas (Chrysler, Dodge, Jeep, RAM) está relacionado a un problema con la luz alta derecha, y el mismo se establece cuando el Módulo ...

Código B1638: Qué Significa y SOLUCIÓN ☐ Actualizado

☐ 0:35 Significado de la falla B1638 ☐ Solicita tu Manual de Reparación: <https://codigosobd2.com/>

B1638: Alto voltaje detectado en el circuito del sensor ...

B-1638 - Airbus A321-213 - Air China - Flightradar24

Jul 7, 2015 · B-1638 / B1638 (Air China) - Aircraft info, flight history, flight schedule and flight playback

Explore Jada Pinkett Smith's impactful role in "Menace to Society." Discover how her performance shaped the film's narrative and themes. Learn more now!

[Back to Home](#)