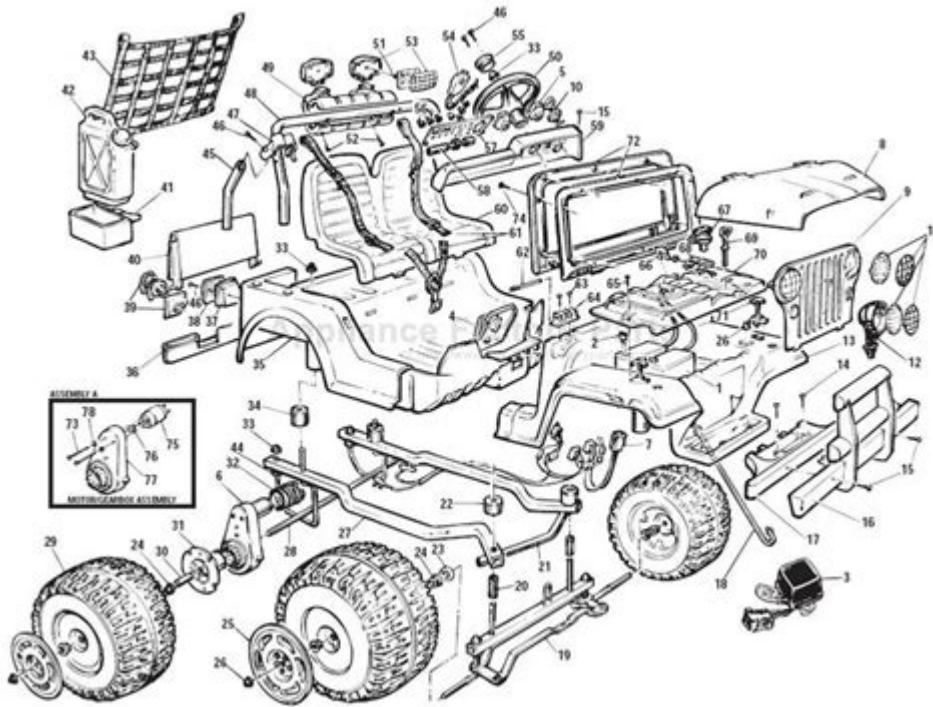


Jeep Tj Parts Diagram



Jeep TJ parts diagram serves as an essential reference for Jeep enthusiasts, mechanics, and DIYers who are looking to maintain or upgrade their Jeep Wrangler TJ models, produced between 1997 and 2006. Understanding the various components and how they interrelate is vital for both repairs and enhancements. This article will delve into the significance of the Jeep TJ parts diagram, its components, and how to utilize it effectively for maintenance and upgrades.

Understanding the Jeep TJ Model

The Jeep Wrangler TJ is renowned for its off-road capabilities, rugged design, and a loyal fanbase. It boasts a classic boxy shape, which is not only aesthetically appealing but also functional for off-road adventures. The TJ is equipped with a range of features that enhance its performance, including solid axles, a fold-down windshield, and a variety of engine options.

Why a Parts Diagram is Important

A Jeep TJ parts diagram provides a visual representation of the vehicle's components, making it easier to identify parts, understand their functions, and locate them during repairs or upgrades. Here are a few reasons why having

access to a parts diagram is crucial:

1. **Ease of Identification:** For someone unfamiliar with automotive terminology, a diagram can simplify the identification of various components.
2. **Streamlined Repairs:** Knowing exactly where each part is located can save time during repairs.
3. **Upgrades and Modifications:** When looking to upgrade specific components, a parts diagram can help in selecting compatible parts and understanding how they fit into the overall system.
4. **Enhanced Communication:** When discussing repairs with a mechanic, having a diagram can aid in clearer communication about which parts need attention.

Key Components of the Jeep TJ Parts Diagram

The Jeep TJ parts diagram includes several critical components, organized into different systems of the vehicle. Below are some of the major categories and their corresponding parts:

1. Engine Components

The engine is the heart of any vehicle, and the Jeep TJ is no exception. The parts diagram typically includes:

- **Engine Block:** The main structure that houses the cylinders.
- **Cylinder Heads:** Cover the cylinders and contain the valves.
- **Oil Pan:** Holds the engine oil and keeps it lubricated.
- **Intake and Exhaust Manifolds:** Direct air and exhaust gases to and from the engine.

2. Transmission and Drivetrain

The transmission and drivetrain components are crucial for power delivery:

- **Transmission Assembly:** Includes the gearbox and associated linkages.
- **Transfer Case:** Distributes power to the front and rear axles.
- **Driveshafts:** Transfer power from the transmission to the axles.

3. Suspension System

The suspension system ensures a smooth ride and off-road capability:

- **Shock Absorbers:** Dampen the impact of bumps.
- **Coil Springs:** Support the vehicle's weight and provide elasticity.

- Control Arms: Connect the wheels to the vehicle body.

4. Brake System

A reliable brake system is crucial for safety:

- Brake Pads and Rotors: Components that create friction to stop the vehicle.
- Brake Lines: Carry hydraulic fluid to the brake calipers.
- Master Cylinder: Converts the force from the brake pedal into hydraulic pressure.

5. Electrical System

The electrical system controls various functions:

- Battery: Provides electrical power to the vehicle.
- Alternator: Charges the battery and powers electrical components while the engine runs.
- Fuses and Wiring Harness: Protect the electrical system and connect components.

6. Body and Interior Components

The body and interior contribute to the comfort and functionality of the Jeep:

- Doors and Windows: Provide access and visibility.
- Dashboard: Houses controls and displays.
- Seats: Ensure comfort for the driver and passengers.

Where to Find a Jeep TJ Parts Diagram

Finding a reliable Jeep TJ parts diagram can be accomplished through several channels:

- **Owner's Manual:** The manual often includes diagrams specific to your vehicle model.
- **Online Forums and Communities:** Websites like JeepForum or WranglerForum have sections dedicated to DIY repairs, where users share diagrams.
- **Auto Parts Retailers:** Many online retailers offer parts diagrams for

various models along with their parts listings.

- **Service Manuals:** Shop manuals, such as those from Haynes or Chilton, typically include detailed diagrams and repair procedures.

How to Use a Jeep TJ Parts Diagram Effectively

To maximize the benefits of a Jeep TJ parts diagram, follow these guidelines:

1. Familiarize Yourself with the Diagram

Before starting any repairs or modifications, take time to study the diagram. Understand the layout of the components and how they connect to one another.

2. Identify Parts by Number

Most parts diagrams will label components with numbers or letters. Use these identifiers to order parts from suppliers, ensuring you get the correct items.

3. Keep Safety in Mind

While working on your Jeep, prioritize safety. Always disconnect the battery when working on electrical components and use appropriate tools and safety gear.

4. Document Your Work

As you replace or upgrade parts, keep track of what you've changed. This will help in future repairs and provide valuable information if you encounter issues later.

Common Upgrades and Maintenance Tips

Maintaining your Jeep TJ and making upgrades can enhance performance and longevity. Here are some common upgrades to consider:

1. **Suspension Lift Kits:** These kits improve ground clearance and off-road capability.
2. **Performance Exhaust Systems:** Enhance engine performance and sound.
3. **Cold Air Intakes:** Improve airflow to the engine for better performance.
4. **Upgraded Brake Systems:** Essential for improved stopping power, especially after lifting the vehicle.

Regular Maintenance Tasks

To keep your Jeep TJ running smoothly, be sure to perform regular maintenance:

- Oil Changes: Change the oil and filter regularly to prolong engine life.
- Tire Rotation: Rotate tires every 5,000 miles to ensure even wear.
- Brake Inspections: Regularly check brake pads and rotors for wear.

Conclusion

In conclusion, the Jeep TJ parts diagram is a vital tool for any Jeep owner looking to understand their vehicle better, perform maintenance, or make upgrades. By familiarizing yourself with the components and utilizing the diagram effectively, you can ensure that your Jeep remains in top-notch condition and ready for any adventure. Whether you're a seasoned mechanic or a novice DIYer, this knowledge will empower you to tackle repairs and modifications with confidence.

Frequently Asked Questions

What is a Jeep TJ parts diagram?

A Jeep TJ parts diagram is a visual representation that illustrates the various components and parts of the Jeep TJ model, helping owners identify and locate specific parts for maintenance or repair.

Where can I find a Jeep TJ parts diagram?

You can find Jeep TJ parts diagrams on various automotive websites, Jeep forums, and manufacturer websites, as well as in repair manuals specifically for Jeep models.

Why is a parts diagram useful for Jeep TJ owners?

A parts diagram is useful because it helps owners understand the layout of their vehicle, identify components, and order the correct replacement parts without confusion.

Are there online resources for Jeep TJ parts diagrams?

Yes, websites like Jeep's official site, AutoZone, and various aftermarket parts retailers often provide detailed parts diagrams for the Jeep TJ model.

What should I look for in a Jeep TJ parts diagram?

Look for clarity in the diagram, labels for each part, compatibility information, and reference numbers that correspond to parts available for purchase.

Can I use a Jeep TJ parts diagram for other Jeep models?

While some parts may be similar, it is recommended to use the specific parts diagram for the Jeep TJ to ensure accuracy and compatibility when ordering parts.

How can a parts diagram help with DIY repairs?

A parts diagram assists DIY mechanics by providing a clear visual guide, making it easier to locate parts and understand how they fit together during repairs.

Is there a difference between OEM and aftermarket parts in the diagram?

Yes, OEM parts are original equipment manufacturer parts, while aftermarket parts are produced by third-party companies. Diagrams may specify which parts are OEM or aftermarket.

What tools do I need to work with a Jeep TJ parts diagram?

Basic tools such as wrenches, sockets, screwdrivers, and pliers are typically needed for repairs, along with a copy of the parts diagram for reference.

Find other PDF article:

<https://soc.up.edu.ph/53-scan/pdf?ID=knv77-9121&title=shadow-health-focused-exam-abdominal-pain-documentation.pdf>

[Jeep Tj Parts Diagram](#)

Why your steering wanders or seems loose. - Jeep Enthusiast Forums

Oct 6, 2023 · Why your steering wanders or seems loose One of the biggest issues with Jeeps and a topic that almost repeats itself in a new thread each week is "wandering or loose ...

Jeep Wrangler Forums

Jun 13, 2025 · The Jeep Wrangler (JL) is the fourth generation of the Wrangler off-road vehicle, available in two- and four-door bodies starting in 2017. Forum sponsored by: Quadratec

AUX Battery Location | Jeep Enthusiast Forums

Dec 5, 2024 · Here it is for anyone that stumbles onto this post: (11) Jeep Grand Cherokee Stop / Start Unavailable Service Fix Auxiliary Battery location & Replacement - YouTube EDIT: In ...

Starting System Diagnostics - Jeep Enthusiast Forums

Dec 27, 2010 · Jeep Enthusiast Forums provides answers from our community and over 22 other related forums.

All Marketplace Listings - Jeep Enthusiast Forums

Jun 14, 2025 · For Sale Jeep CJ5 CJ7 CJ8 Whitco soft top frame parts & hardware, rods, plastic trim, brackets \$240.00 mattt181 Apr 28, 2025 Body & Interior Parts Anaheim, California 0 196

Anyone tow a camper with the Gladiator? - Jeep Enthusiast Forums

Dec 18, 2024 · Looking into getting a gladiator within the next 6 months or so. Mostly looking at used but who knows. May eventually want to tow a small camper less than 20 ft long. Has ...

YJ Wrangler Technical Forum - Jeep Enthusiast Forums

Jul 12, 2007 · Second generation of the classic Jeep - manufactured from 1987 till 1995. Known by their square headlights.

2025 Grand Cherokee - Jeep Enthusiast Forums

Jul 13, 2025 · Jeep Enthusiast Forums provides answers from our community and over 22 other related forums.

1984 Jeep CJ-7 (May Sell, No Clue On Value)

Jul 15, 2025 · 304-Powered 1984 Jeep CJ-7 Bid for the chance to own a 304-Powered 1984 Jeep CJ-7 at auction with Bring a Trailer, the home of the best vintage and classic cars online. Lot ...

2024 grand cherokee intermittent issues - Jeep Enthusiast Forums

Dec 16, 2024 · Jeep Enthusiast Forums provides answers from our community and over 22 other related forums.

Why your steering wanders or seems loose. - Jeep Enthusiast Forums

Oct 6, 2023 · Why your steering wanders or seems loose One of the biggest issues with Jeeps and a topic that almost repeats itself in a new thread each week is "wandering or loose steering". As a ...

Jeep Wrangler Forums

Jun 13, 2025 · The Jeep Wrangler (JL) is the fourth generation of the Wrangler off-road vehicle, available in two- and four-door bodies starting in 2017. Forum sponsored by: Quadratec

AUX Battery Location | Jeep Enthusiast Forums

Dec 5, 2024 · Here it is for anyone that stumbles onto this post: (11) Jeep Grand Cherokee Stop / Start Unavailable Service Fix Auxiliary Battery location & Replacement - YouTube EDIT: In case ...

Starting System Diagnostics - Jeep Enthusiast Forums

Dec 27, 2010 · Jeep Enthusiast Forums provides answers from our community and over 22 other related forums.

All Marketplace Listings - Jeep Enthusiast Forums

Jun 14, 2025 · For Sale Jeep CJ5 CJ7 CJ8 Whitco soft top frame parts & hardware, rods, plastic trim, brackets \$240.00 mattt181 Apr 28, 2025 Body & Interior Parts Anaheim, California 0 196

Anyone tow a camper with the Gladiator? - Jeep Enthusiast Forums

Dec 18, 2024 · Looking into getting a gladiator within the next 6 months or so. Mostly looking at used but who knows. May eventually want to tow a small camper less than 20 ft long. Has anyone ...

YJ Wrangler Technical Forum - Jeep Enthusiast Forums

Jul 12, 2007 · Second generation of the classic Jeep - manufactured from 1987 till 1995. Known by their square headlights.

2025 Grand Cherokee - Jeep Enthusiast Forums

Jul 13, 2025 · Jeep Enthusiast Forums provides answers from our community and over 22 other related forums.

1984 Jeep CJ-7 (May Sell, No Clue On Value)

Jul 15, 2025 · 304-Powered 1984 Jeep CJ-7 Bid for the chance to own a 304-Powered 1984 Jeep CJ-7 at auction with Bring a Trailer, the home of the best vintage and classic cars online. Lot ...

2024 grand cherokee intermittent issues - Jeep Enthusiast Forums

Dec 16, 2024 · Jeep Enthusiast Forums provides answers from our community and over 22 other related forums.

Explore our comprehensive Jeep TJ parts diagram guide! Discover essential components and their layout for your Jeep TJ. Learn more to enhance your ride today!

[Back to Home](#)